



PARTS, SERVICE & ACCESSORIES

KLUGER

November 2016 Production Onwards

ACRYLIC HEADLAMP COVERS

Installation Instructions

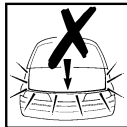
Accessory Part No. PZQ14-48070

Installation Time: Approx. 15 mins

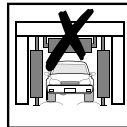
READ INSTALLATION INSTRUCTIONS THOROUGHLY BEFORE COMMENCING INSTALLATION.

PLACE THESE INSTRUCTIONS IN VEHICLE'S GLOVE BOX AFTER INSTALLATION IS COMPLETE

Care Instructions:



Do not slam bonnet.



Do not use automatic car wash.



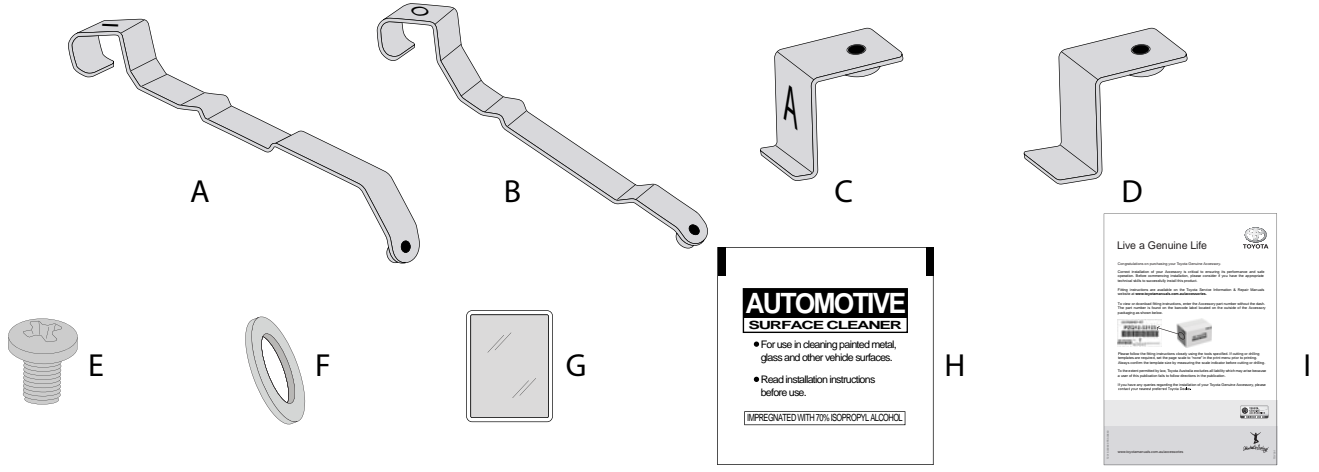
Do not use abrasive, spirit or solvent based cleaners.



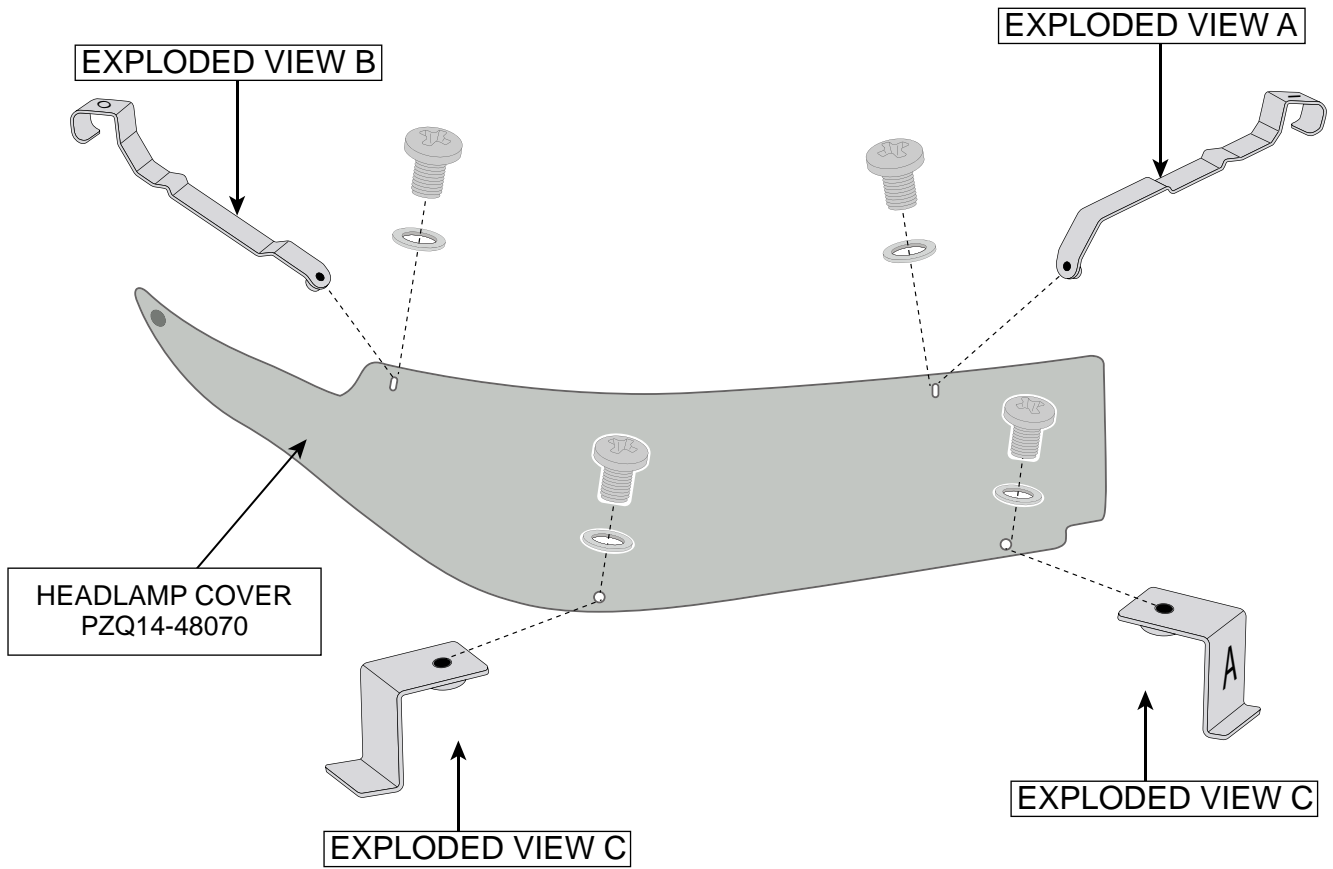
Clean with a mild detergent and water solution.

Item	Component Name	Qty	Part number
1	Headlamp Cover Set	1	PZQ14-48070
2	Inner Top Metal Clip "I"	2	PZQ14-4807A
	Outer Top Metal Clip "O"	2	
	Inner Lower Metal Clip "A"	2	
	Outer Lower Metal Clip	2	
	Washer	8	
	Screw	8	
	Anti-Abrasive Tape	8	
	Alcohol Wipe	1	
	Fitting Instruction Flyer	1	

Item	Qty		Item	Qty	
A	2	Inner Top Metal Clip "I"	F	8	Washer
B	2	Outer Top Metal Clip "O"	G	8	Anti-Abrasive Tape
C	2	Inner Lower Metal Clip "A"	H	1	Alcohol Wipe
D	2	Outer Lower Metal Clip	I	1	Fitting Instruction Flyer
E	8	Screw			



FITTING KIT
PZQ14-4807A



LHS part is mirror image

IMAGE IS FOR REFERENCE ONLY

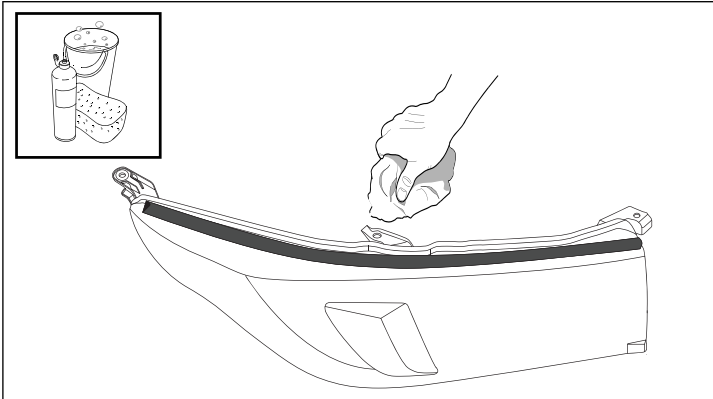
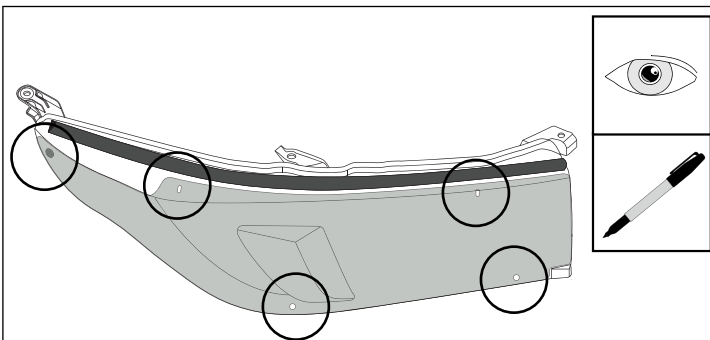


Diagram #: 1

1. Read installation instructions thoroughly before commencing installation. Open the bonnet and thoroughly clean and dry headlamps and surrounding areas.
See Dia #1.



RHS SHOWN (LHS IS A MIRROR IMAGE)

Diagram #: 2

2. Trial fit the Headlamp Cover centrally on the headlamp.

Note the slots at the top of the Headlamp Cover and mark these locations onto the headlamp assembly.

Note the two holes at the bottom of the Headlamp Cover and mark these locations onto the bumper directly below the holes.

Also note the dual-lock disc attached to the Headlamp Cover and where it corresponds to the headlamp.

Remove the Headlamp Cover.

See Dia #2.

Note: Use a Non-Permanent Marker.

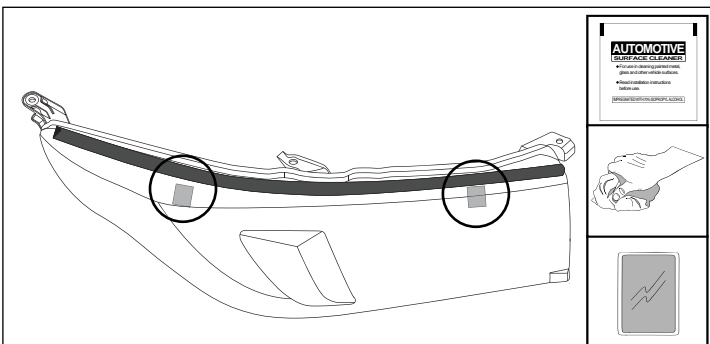


Diagram #: 3

3. At the previously noted and marked locations, clean the headlamp lens with the alcohol wipe provided. Remove any residue with a clean dry cloth.

Fit the Headlamp Cover centrally on the headlamp, holding it approximately 1-2cm off the headlamp surface.

Adhere the two top anti-abrasive tapes directly below the slots and holes onto the headlamp surface.

Remove Headlamp cover.

See Dia #3.

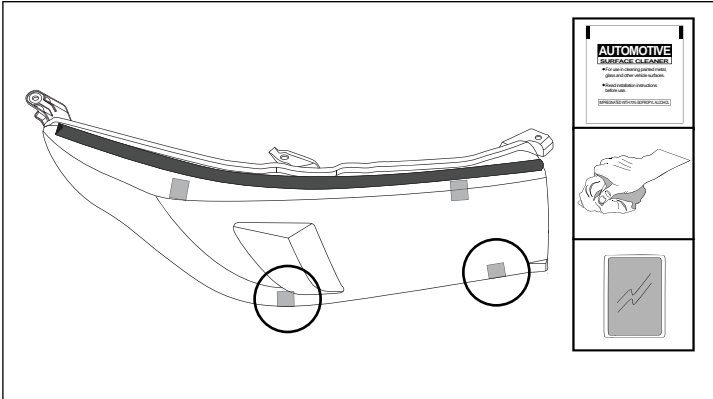


Diagram #: 4

4. At the previously noted and marked locations, clean the headlamp lens with the alcohol wipe provided. Remove any residue with a clean dry cloth.

Fit the Headlamp Cover centrally on the headlamp, holding it approximately 1-2cm off the headlamp surface.

Adhere two thirds of the anti-abrasive tape on the headlamp face directly above the pen marks on the bumper.

Remove pen marks from the bumper with the alcohol wipe provided.

See Dia #4.

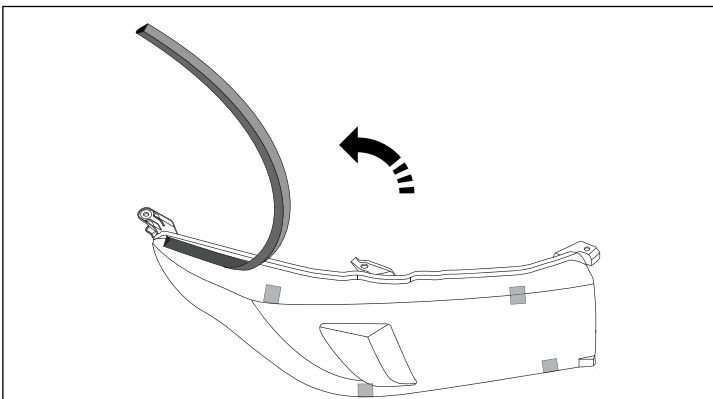


Diagram #: 5

5. Carefully peel back the rubber extrusion past the noted top metal clip location. Do not fully remove the rubber extrusion.

See Dia #5.

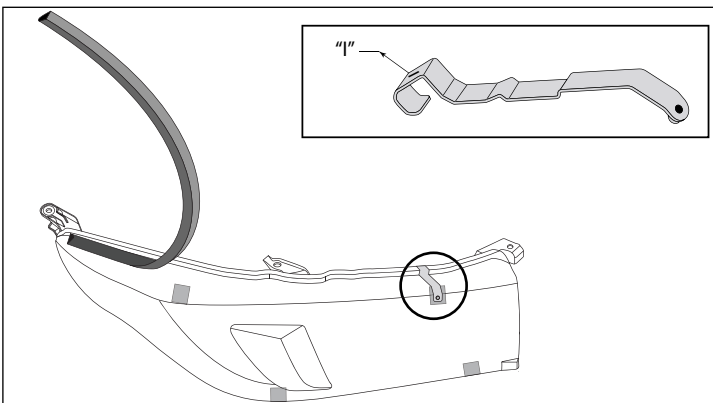


Diagram #: 6

6. At the previously noted and marked top inner slot position, fit the top metal inner clip "I" to the top of the headlamp. Ensure that the metal clip is located on the anti-abrasive tape strip and not on the headlamp lens.

See Dia #6.

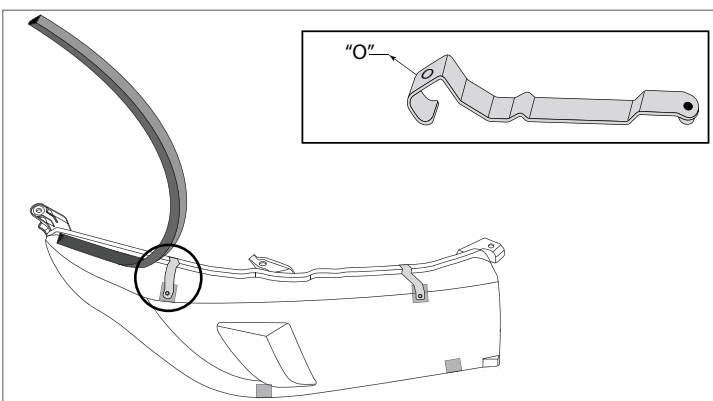


Diagram #: 7

7. At the previously noted and marked top outer slot position, fit the top metal outer clip "O" to the top of the headlamp. Ensure that the metal clip is located on the anti-abrasive tape strip and not on the headlamp lens.

See Dia #7.

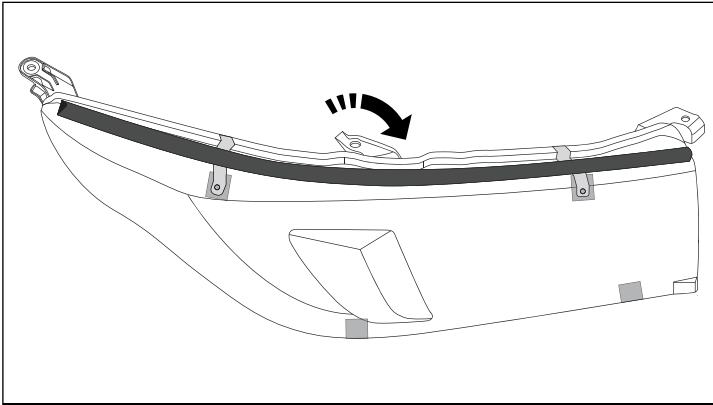


Diagram #: 8

8. Reposition the rubber extrusion over the top metal clips .

See Dia #8.

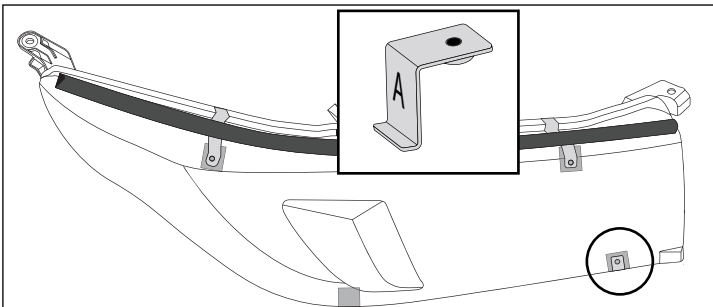


Diagram #: 9

9. At the previously noted position, fit the Inner Lower metal clip "A" between the bumper and headlamp assembly. Ensure that the metal clip is located on the anti-abrasive tape strip and not on the headlamp lens.
See Dia #9.

Note: If clip is difficult to insert, carefully pry the bumper down using a plastic pry bar.

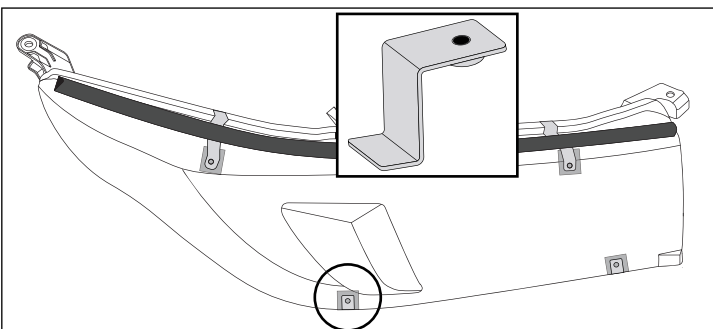
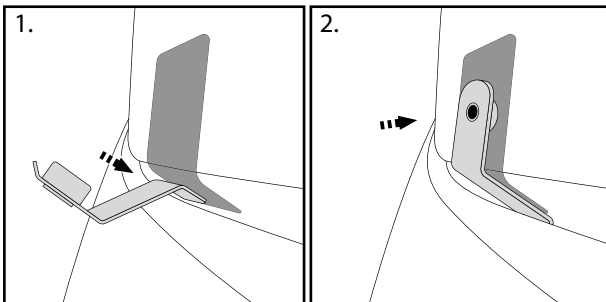
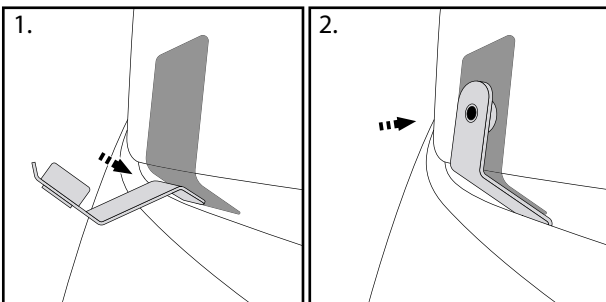


Diagram #: 10

10. At the previously noted position, fit the Outer Lower metal clip between the bumper and headlamp assembly. Ensure that the metal clip is located on the anti-abrasive tape strip and not on the headlamp lens.
See Dia #10.

Note: If clip is difficult to insert, carefully pry the bumper down using a plastic pry bar.



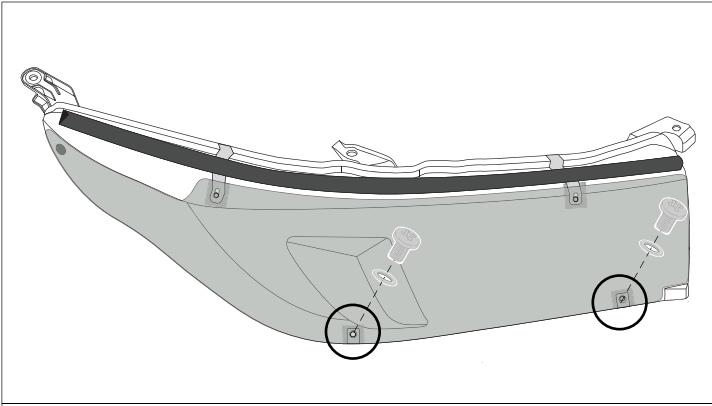


Diagram #: 11

11. Loosely secure the Headlamp Cover to the two bottom metal clips with the screws and washers provided.
See Dia #11.

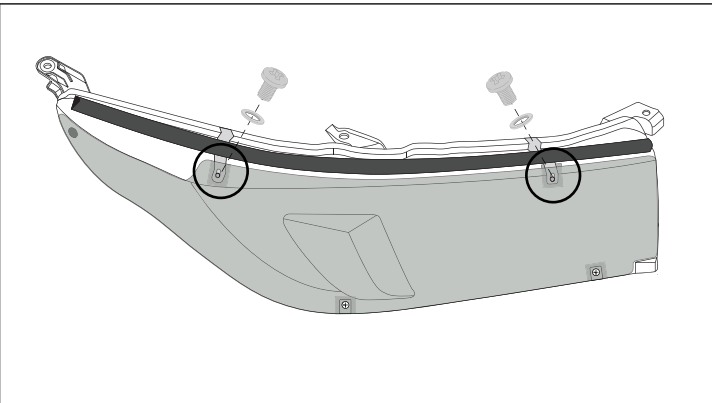


Diagram #: 12

12. Loosely secure the Headlamp Cover to the top metal clips with the remaining screws and washers provided.
See Dia #12.

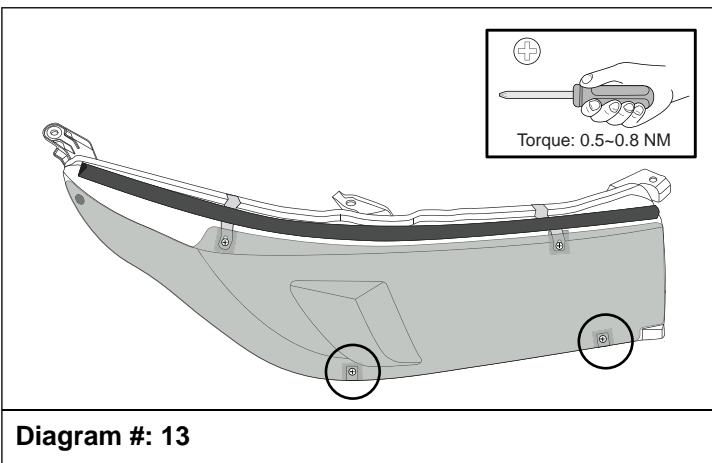


Diagram #: 13

13. Tighten the two bottom metal clip screws to the specified torque setting.
See Dia #13.

Note: Ensure torque setting 0.5~0.8NM is used.

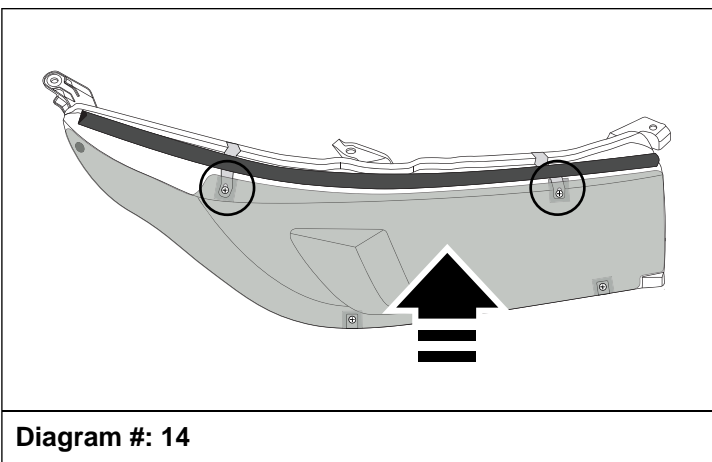


Diagram #: 14

14. Tighten the top metal clip screw to the specified torque setting, while applying upwards pressure to the Headlamp Cover.
See Dia #14.

Note: Ensure torque setting 0.5~0.8NM is used.

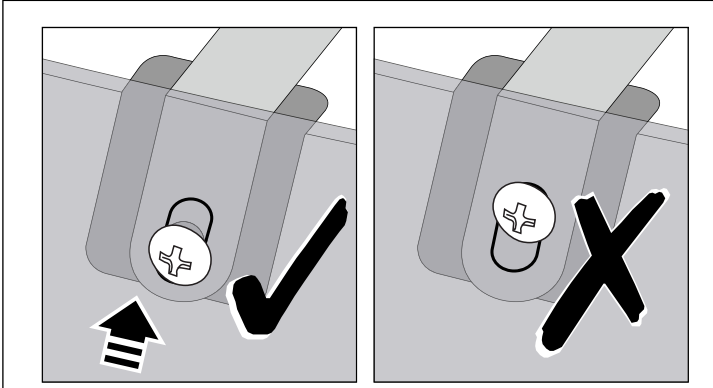


Diagram #: 15

15. Ensure the screw is as close to the bottom of the Headlamp Cover slot as possible.
See Dia #15.

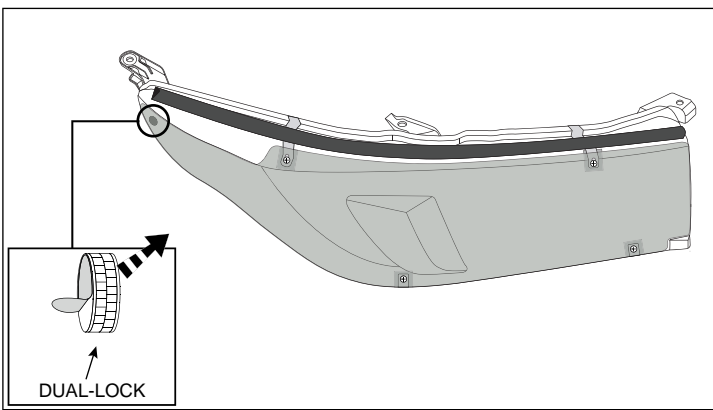


Diagram #: 16

16. At the dual-lock disc location slightly lift the Headlamp cover, and remove the dual-lock disc backing tape.

Apply firm downward pressure to the dual-lock disc to ensure that it adheres to the headlamp lens.

See Dia #16.

Note: Use caution, so not to dislodge the Headlamp Protector.

IMPORTANT: Conduct final inspection, ensuring all screws are tightened, and clips are correctly installed and not touching the headlamp surface.

TO REMOVE: Remove screws and washers, then remove Headlamp Cover from the Headlamp assembly.