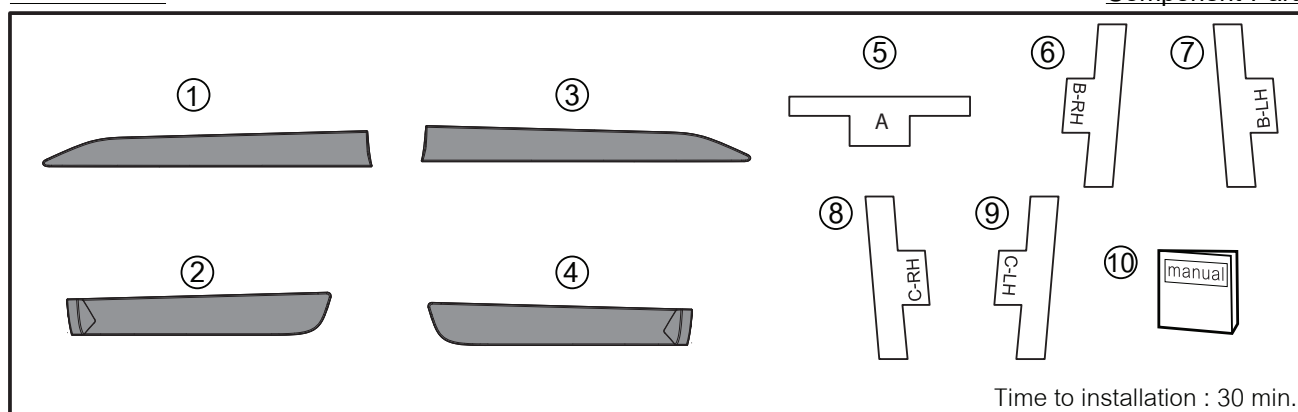


INSTALLATION MANUAL BODY SIDE MOLDING

Thank you for your purchase of TOYOTA genuine "BODY SIDE MOLDING" This manual explains the procedure for installation, Please read this manual before installation to ensure correct installation.

PART NUMBER	APPLICABLE MODEL	REMARK
PC170-0K006	HILUX 2015 (D-CAB ONLY)	-
PC170-0K00Z	HILUX 2015 (D-CAB ONLY)	-

Component Parts



NO.	PART NUMBER	PART NAME	Q'TY
1	PC170-0K01C	(Body Side Molding FR LH)	1
2	PC170-0K01F	(Body Side Molding RR LH)	1
3	PC170-0K01B	(Body Side Molding FR RH)	1
4	PC170-0K01D	(Body Side Molding RR RH)	1
5	-	A (Template A)	8
6	-	B-RH (Template B-RH)	1
7	-	B-LH (Template B-LH)	1
8	-	C-RH (Template C-RH)	1
9	-	C-LH (Template C-LH)	1
10	-	(Installation Manual)	1

INSTALLATION TOOLS/MATERIALS

- Clean Cloth
- Adhesive Tape
- Degreasing Agent
- Scissor or Cutter
- Heat Gun (when temperature is 15°C or Lower)
- Laser Digital Thermometer

INSTALLATION REQUIREMENTS

- Temperature Range : 15° - 55° C
- Installation Force : 49N ±1N



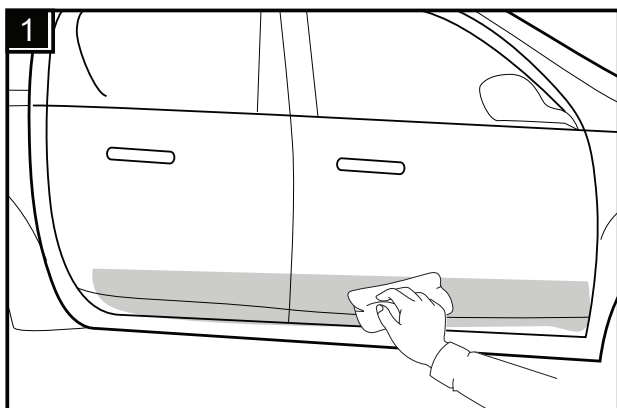
TOYOTA DAIHATSU ENGINEERING & MANUFACTURING CO., LTD.

- ⚠ CAUTION :**
1. Perform the installation indoors where it is not subjected to dust. If the air temperature is 15°C or lower, the adhesive strength will be reduced. In order to prevent such problems, use a heat gun to warm up the installation surface of the vehicle and the double-sided adhesive tape to a temperature between 15°C and 55°C before performing adhesion work. Failure to do this may cause the product to drop off or peel off.
 2. Using a degreasing agent, thoroughly wipe off dust and oil from the installation surface of the vehicle. Failure to do this can result in reduced adhesive strength and cause the product to drop off or peel off. Keep fire away from the vehicle when using a degreasing agent.
 3. Avoid touching the double-sided adhesive tape when release liner is peeled away as this can cause adhesive strength to decrease.
 4. All sticker templates must be used before product installation. Failure to do this may cause the product to drop off or peel off.
 5. It is recommended that these parts are installed at installer chest height to ensure accurate alignment of product.
 6. Please do not remove the product once installation completed as this can cause the adhesive strength to decrease.
 7. Please do not allow your vehicle to get wet (car wash or left in rain) for at least 24 hours after installation.
 8. Please avoid driving car more than 90km/h for at least 24 hours after installation
 9. If washing vehicle with high pressure washer, please ensure nozzle is greater than 50 cm from product. Failure to do this may cause the product to drop off or peel off

- Keep away from fire when degreasing and cleaning the double adhesive tape attached portions with white gasoline.
- When the temperature is 15°C or lower, the adhesive strength of double-sided adhesive tape will be reduced, so warm up the tape and both doors when installation.



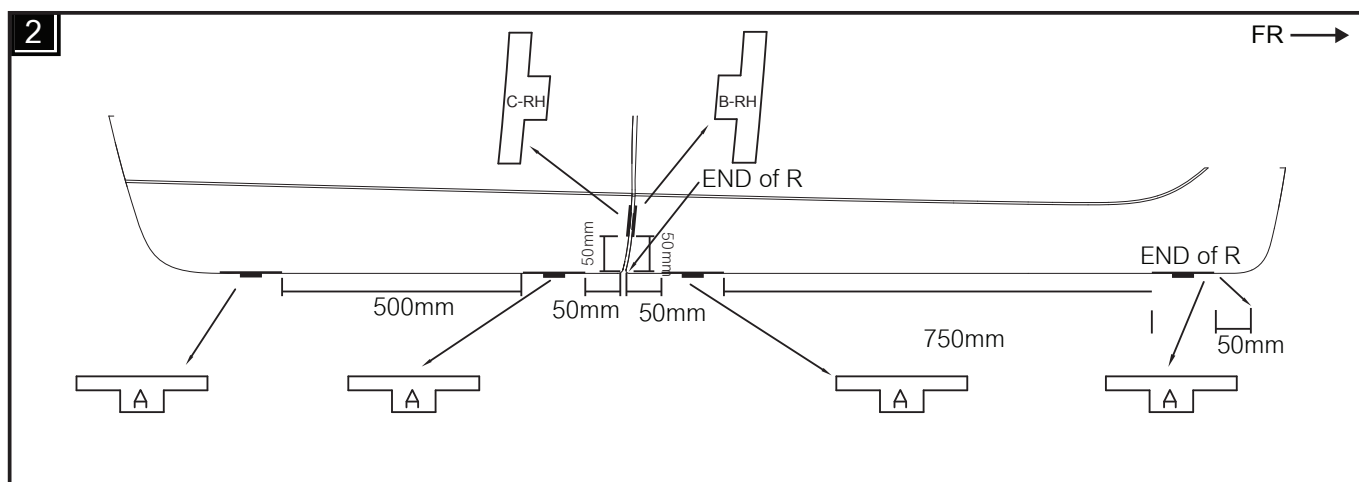
Installation Method



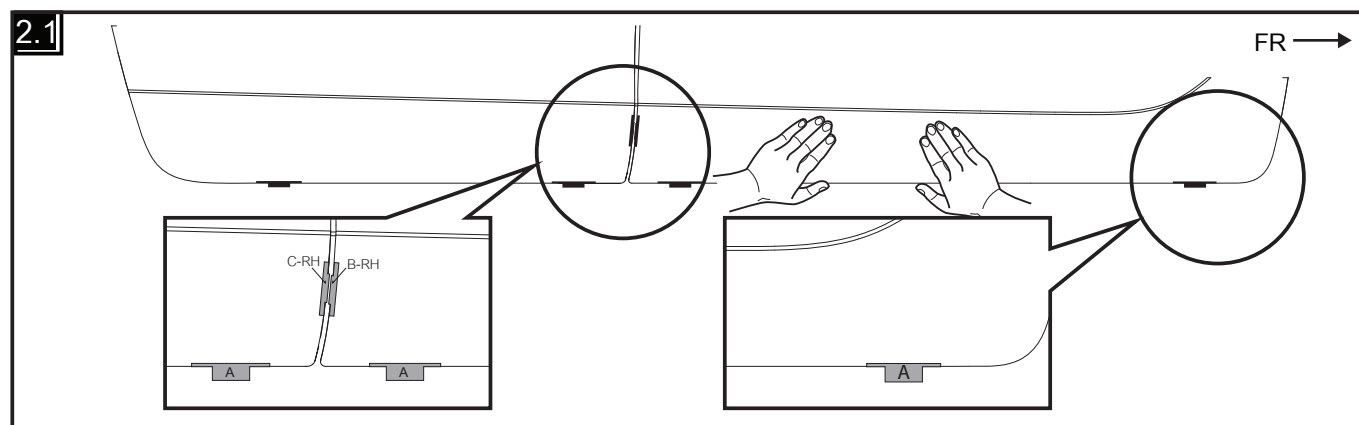
CAUTION

Once cleaned do not contaminate these surfaces by touching it with your bare hands.

1. Clean and degrease the shaded area using clean cloth with degreasing agent as shown in Fig. 1

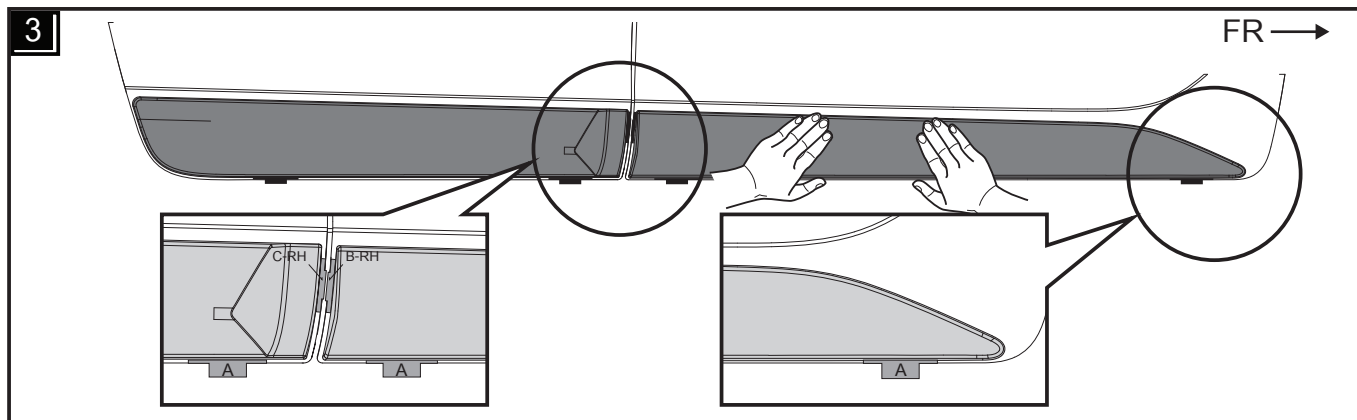


2. Position of sticker template.



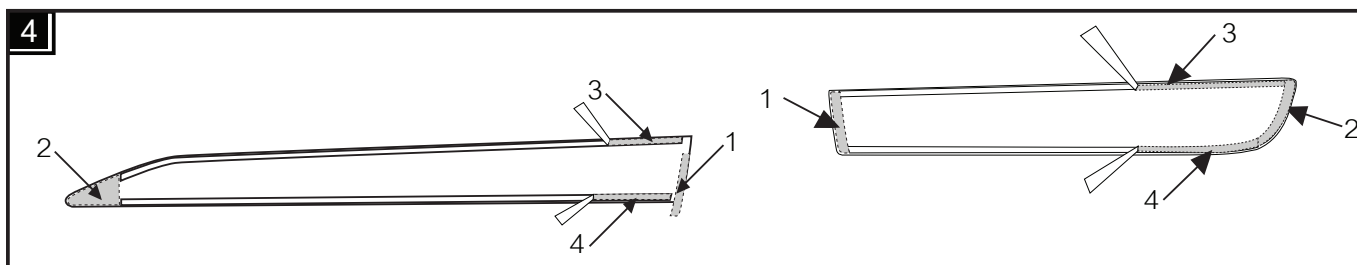
- 2.1 Attach sticker template on front and rear door by using edge of door as reference point and as show on fig 2.1



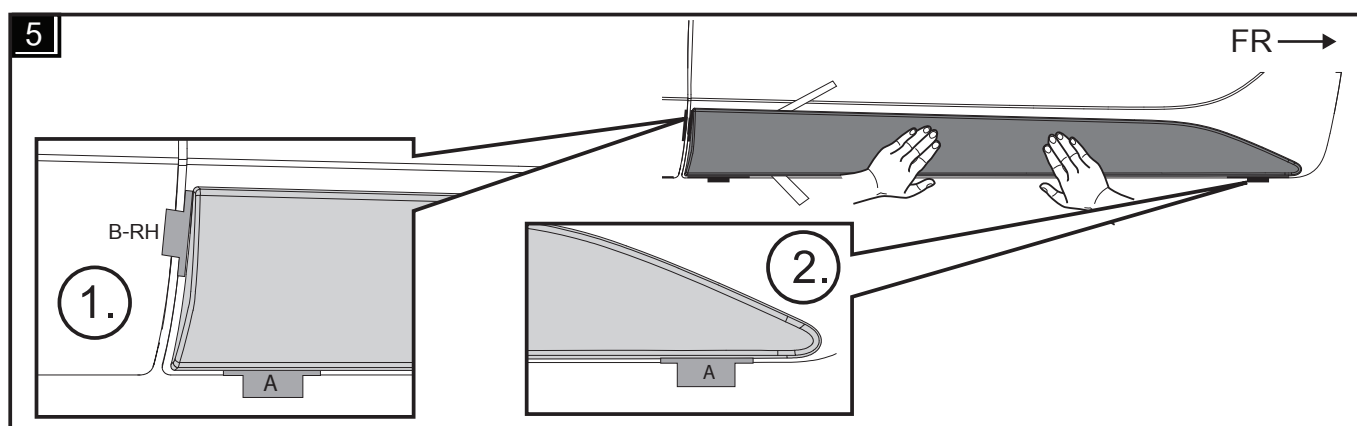


3. Trial fit (do not remove release liner) and check position of parts on both front and rear door mouldings by aligning them to the sticker templates.

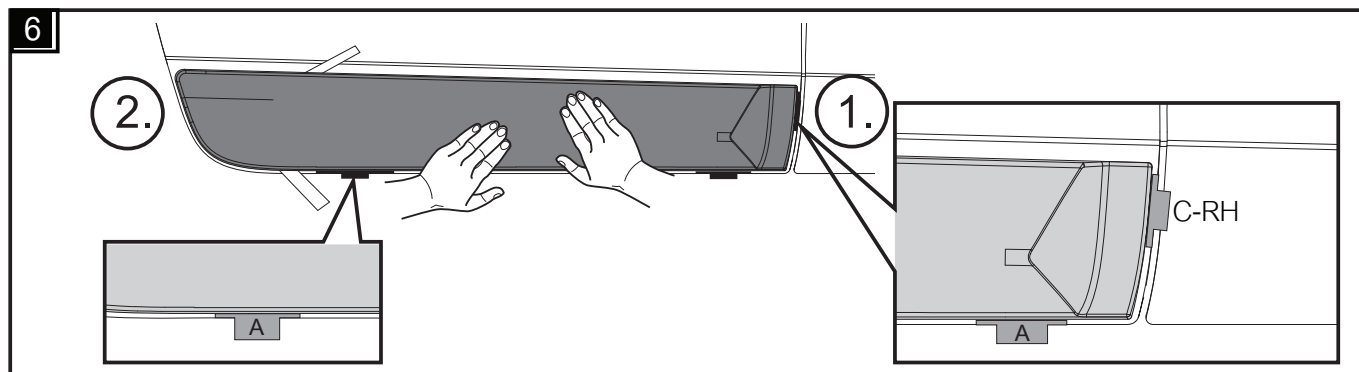
NOTE: If vehicle door panels and door mouldings are not at the required temperature, heat up vehicle door panels and door moulding.



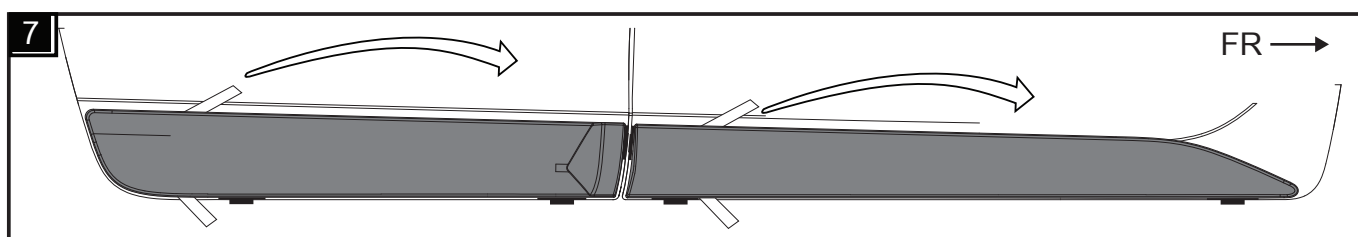
4. Starting with front door mould, completely peel off release liners 3. and 4. by about 5cm and fold it to outside. Completely remove release liners 1. and 2 and discard.



5. Place the front door mould onto door panel, aligning it to the sticker templates. Apply firm pressure to part in position ① to door panel and then check level of part in the portion between sticker templates A. Apply firm pressure to part in position ② to door panel.

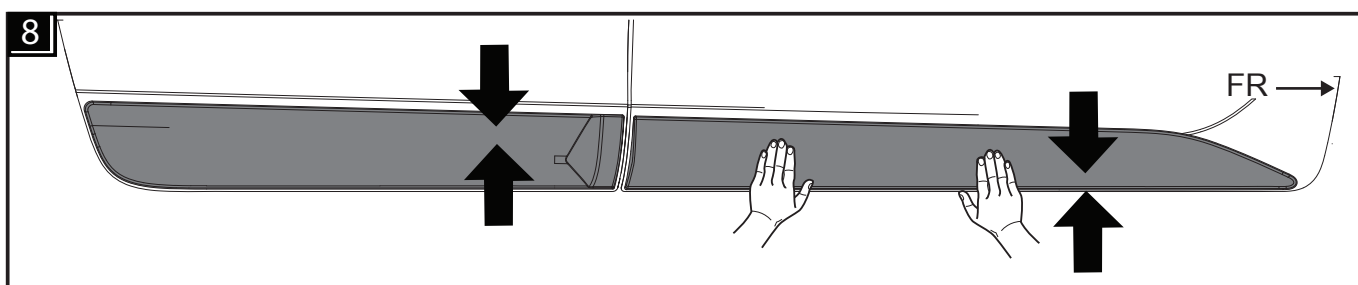


6. Repeat Steps 4 and 5 for rear door mould.



7. Open doors to full opening angle to ensure moulds do not interfere with body panel. Remove the remaining release liners in the direction according to Fig. 7. Check all release liners have been removed as failure to do this may cause the product to drop off or peel off. Then apply pressure force of $49\text{N} \pm 1\text{N}$ on all areas of the part with double-sided tape. Failure to do so may cause product to drop or peel off. Remove all sticker templates.

⚠ CAUTION : Must press all areas of double-sided tape with a force of $49\text{N} \pm 1\text{N}$



8. Repeat steps 1- 7 to install parts on the opposite side.

9. After installation around 5 min, try moving the part to check adhesive tapes are properly attached in all areas.