



TOYOTA GENUINE

PARTS, SERVICE & ACCESSORIES

HI-ACE

January 2014 Production Onwards

ACRYLIC HEADLAMP COVERS

Installation Instructions

Accessory Part No. PZQ14-75040

Installation Time: Approx. 15 mins

Place these instructions in vehicle's glove box after installation is complete

Care Instructions:

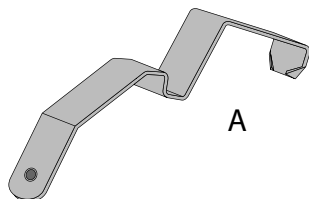
Do not slam bonnet.

Clean Headlamp Covers
with a mild detergent and
water solution.Do not use automatic
car wash.Do not use abrasive,
spirit or solvent
based cleaners.

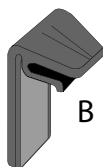
Item	Component Name	Qty	Part number
1	Headlamp Covers Set	1	PZQ14-75040
2	Top Metal Clips	2	PZQ14-75040FK
	Plastic Clips A	4	
	Plastic Clips B	2	
	Washers	2	
	Screws	2	
	Anti-Abrasive Tape	2	
	Alcohol Wipe	1	
	Installation Instruction	1	



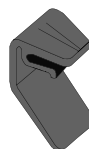
Item	Qty		Item	Qty	
A	2	Top Metal Clips	E	2	Washers
B	4	Plastic Clips A	F	2	Anti-Abrasive Tape
C	2	Plastic Clips B	G	1	Alcohol Wipe
D	2	Screws	H	1	Installation Instruction



A



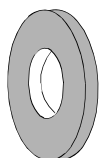
B



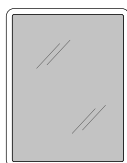
C



D



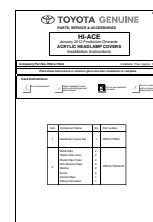
E



F

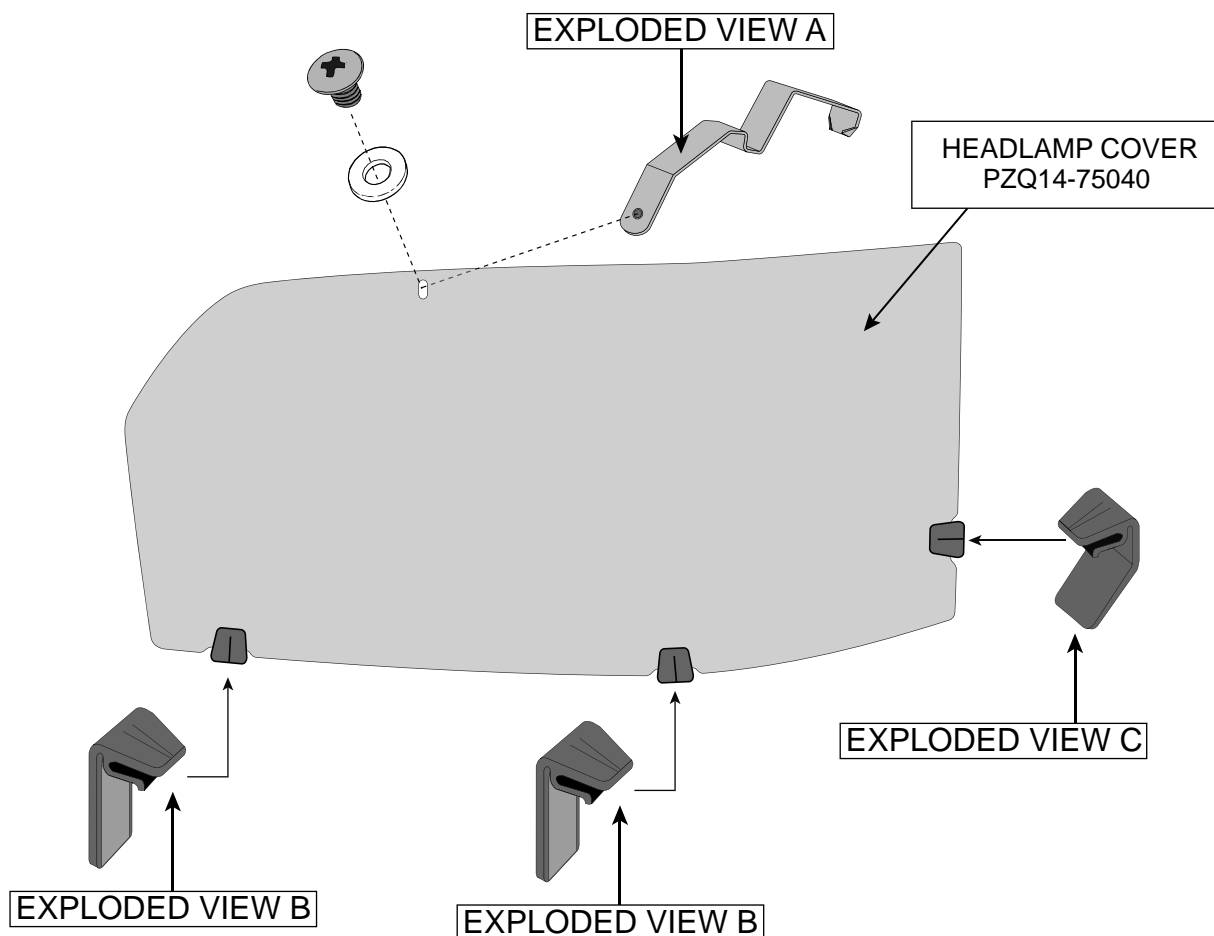


G



H

FITTING KIT
PZQ14-75040FK



LHS part is mirror image

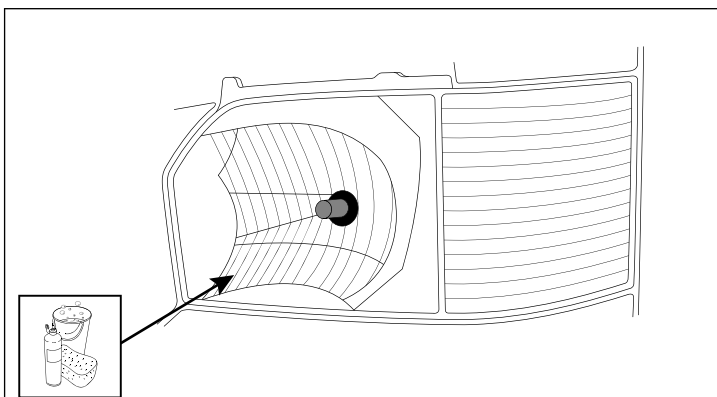


Diagram #: 1

1. Read installation instructions thoroughly before commencing installation. Open the bonnet and thoroughly clean and dry headlamps and surrounding areas.
See Dia #1.

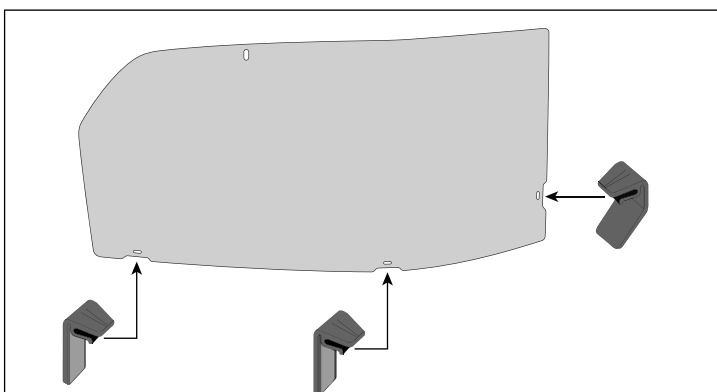


Diagram #: 2

2. Attach the plastic clips A to the bottom of the Headlamp Cover and plastic clip B to the side of the Headlamp Cover as shown. You should hear a definite "click" when the clip engages with the slot in the Headlamp Cover.
See Dia #2.

NOTE: TAKE CARE NOT TO APPLY EXCESSIVE PRESSURE DURING THIS STEP.

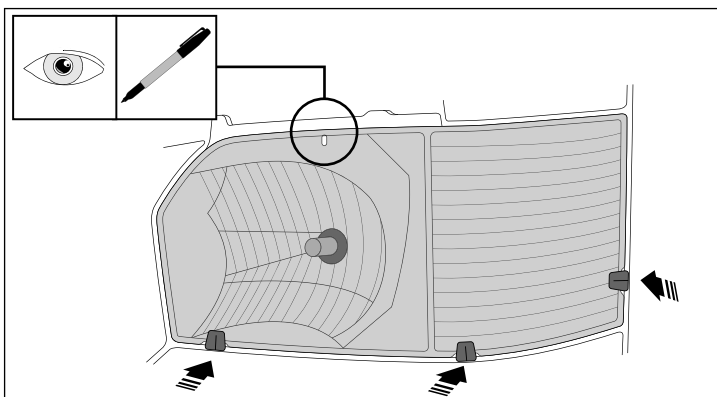


Diagram #: 3

3. Trial fit the Headlamp Cover centrally on the headlamp by carefully locating the plastic clips between the facias and headlamp assembly. Note the slot in the top of the Headlamp Cover. Mark this location onto the headlamp assembly with a non-permanent marker. Remove the Headlamp Cover.
See Dia #3.

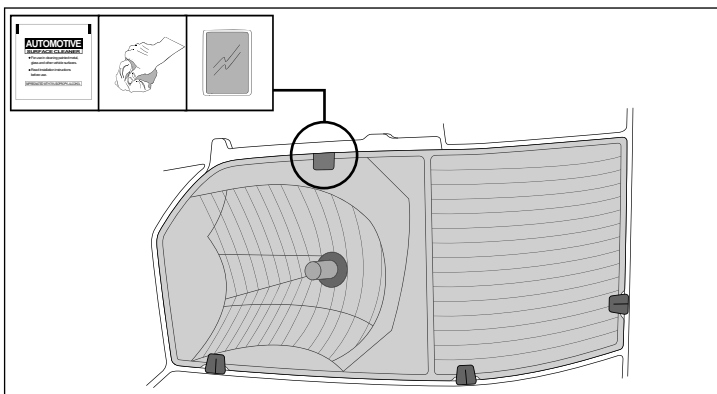


Diagram #: 4

4. At the previously noted and marked top slot position, clean the headlamp lens with the alcohol wipe provided. Remove any residue with a clean dry cloth. Adhere the anti-abrasive tape strip provided to the top slot position.
See Dia #4.

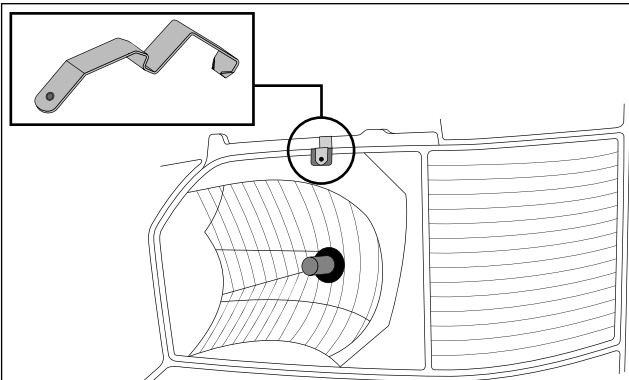


Diagram #: 5

5. At the previously noted and marked top slot position, fit the metal clip to the top of the headlamp at the previously noted position. Ensure that the metal clip is located on the anti-abrasive tape strip and not on the headlamp lens.

See Dia #5.

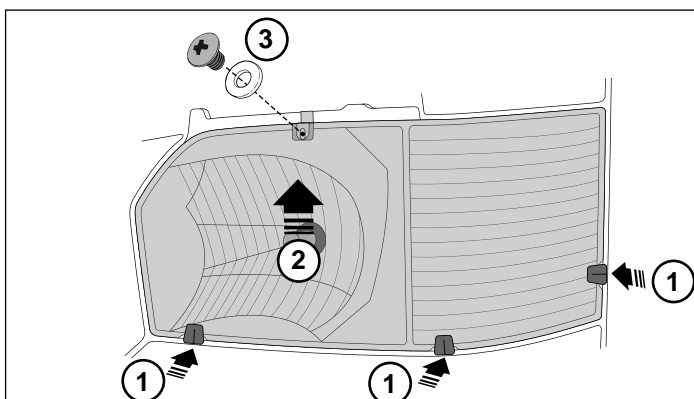


Diagram #: 6

6. To complete installation. 1) Insert the plastic clips between the facias and headlamp assembly. 2) Position the top slot over the metal clip aligning the hole in the clip with the slot in Headlamp Cover, press down over the metal clip and at the same time **apply upwards and inwards pressure** to Headlamp Cover. 3) Secure the Headlamp Cover with screws and washers provided.

See Dia #6.

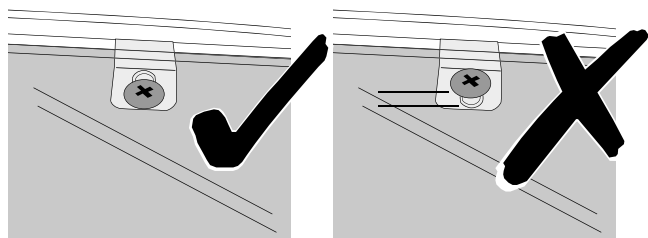


Diagram #: 7

7. Ensure the screw is as close to the bottom of the vertical Headlight Protector slot as possible.

See Dia #7.

TO REMOVE: Remove screws and washers, then remove the plastic clips on Headlamp Cover from the Headlamp assembly.