



PARTS, SERVICE &amp; ACCESSORIES

# COROLLA HATCH

July 2018 Production Onwards

## ACRYLIC HEADLAMP COVERS

### Installation Instructions

Accessory Part No. PZQ14-12170

Installation Time: Approx. 15 mins

Place these instructions in vehicle's glove box after installation is complete

**Care Instructions:**

Do not slam bonnet.

Clean Headlamp Covers  
with a mild detergent and  
water solution.Do not use automatic  
car wash.Do not use abrasive,  
spirit or solvent  
based cleaners.

Item	Component Name	Qty	Part number
1	Headlamp Covers Set	1	PZQ14-12170
2	Top Metal Clip Outer	2	PZQ14-1217A
	Top Metal Clip Inner	2	
	Bottom Metal Inner "I"	2	
	Bottom Metal Outer "O"	2	
	Washer	8	
	Screw	8	
	Anti-Abrasive Tape	8	
	Alcohol Wipe	1	
	Fitting Instruction Flyer	1	

**TOYOTA GENUINE**

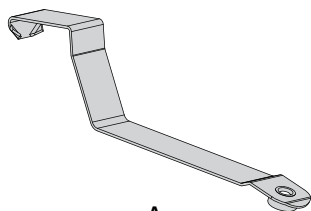
PARTS, SERVICE &amp; ACCESSORIES

COROLLA HATCH ACRYLIC HEADLAMP COVERS

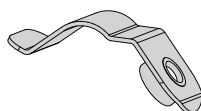
H4427

Accessory Part No. PZQ14-12170

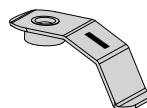
Item	Qty		Item	Qty	
A	2	Top Metal Clip Outer	F	8	Screw
B	2	Top Metal Clip Inner	G	8	Anti-Abrasive Tape
C	2	Bottom Metal Clip Inner "I"	H	1	Alcohol Wipe
D	2	Bottom Metal Clip Outer "O"	I	1	Fitting Instruction Flyer
E	8	Washer			



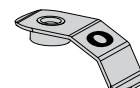
A



B



C



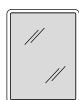
D



E



F



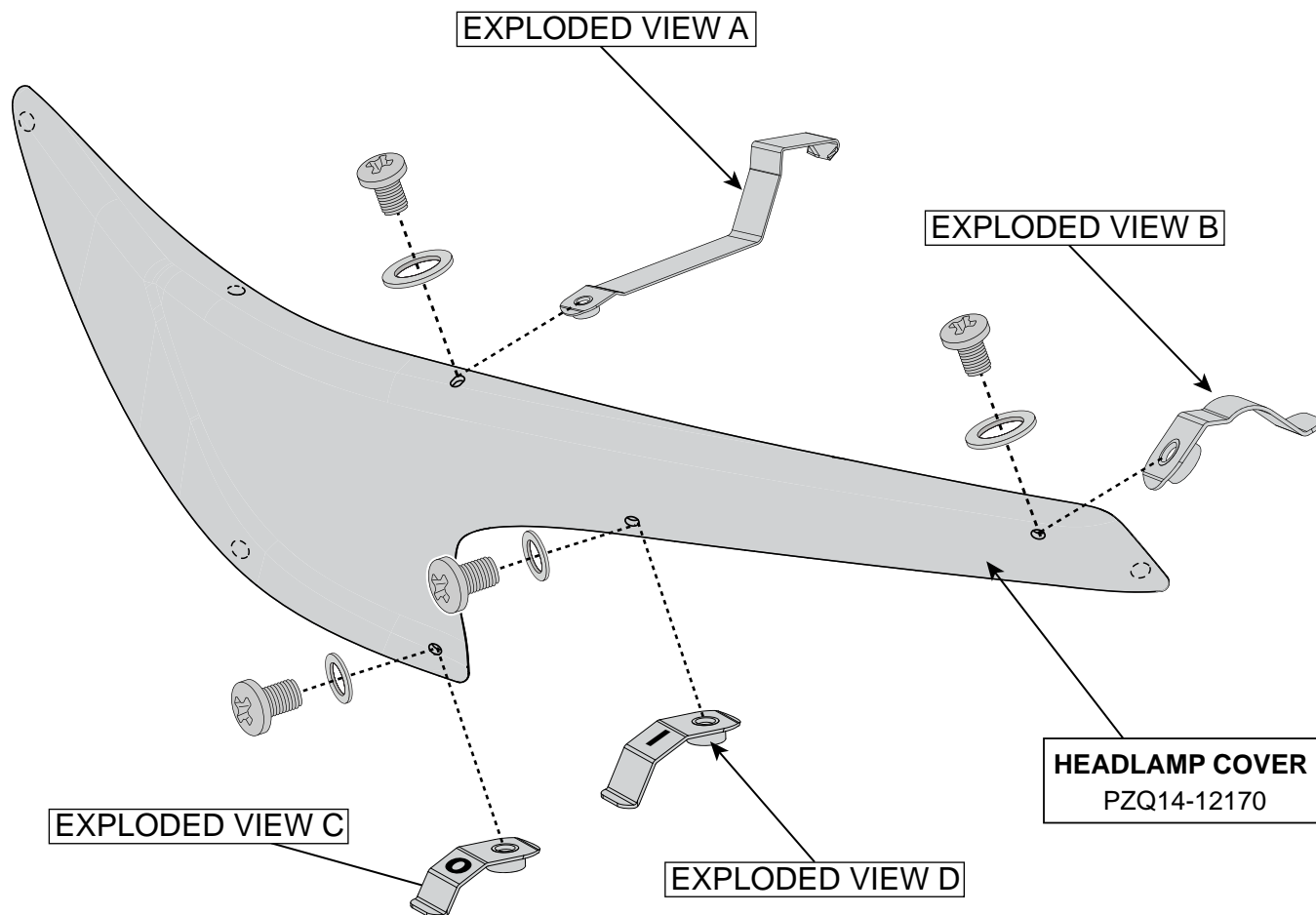
G



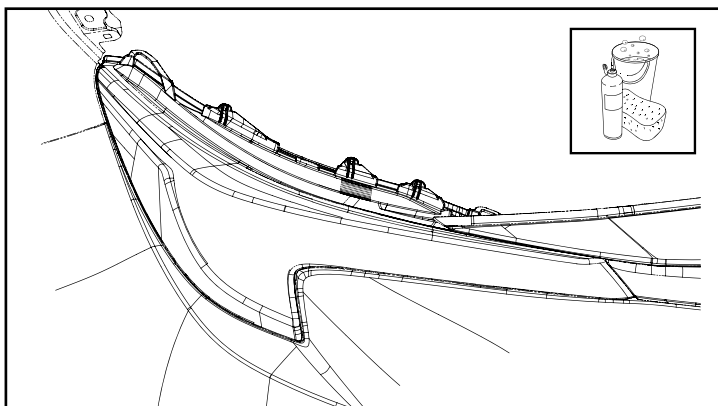
H



I

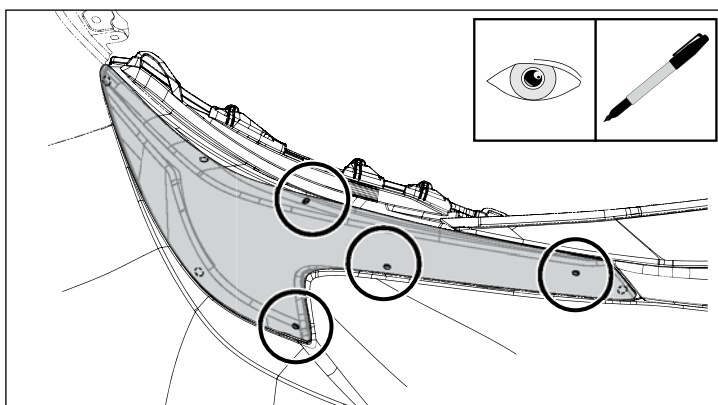
FITTING KIT  
PZQ14-1217A

LHS PART IS MIRROR IMAGE



**Diagram #: 1**

1. Read installation instructions thoroughly before commencing installation. Open the bonnet and thoroughly clean and dry headlamps and surrounding areas.  
**See Dia #1.**



**Diagram #: 2**

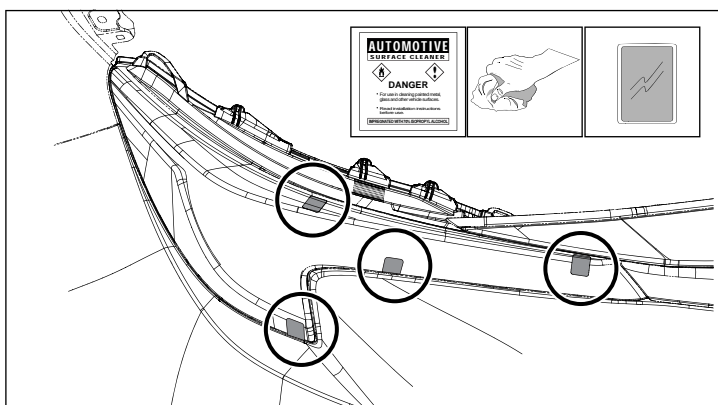
2. Trial fit the Headlamp Cover centrally on the headlamp.

Note the hole and slot at the top of the Headlamp Cover and mark this location onto the headlamp assembly.

Note the holes at the bottom of the Headlamp Cover and mark these locations onto the headlamp assembly and bumper directly below the holes.

**See Dia #2.**

**Note: Use a Non-Permanent Marker.**



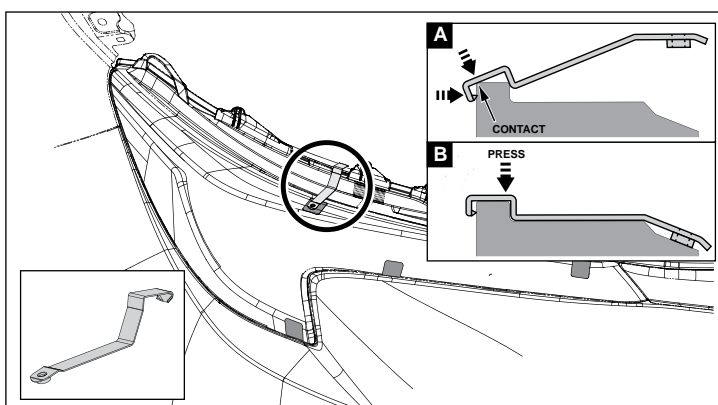
**Diagram #: 3**

3. At the previously noted and marked locations, clean the headlamp lens with the alcohol wipe provided. Remove any residue with a clean dry cloth.

Fit the Headlamp Cover centrally on the headlamp, holding it approximately 1-2cm off the headlamp surface.

Adhere the anti-abrasive tapes provided to all slot and hole positions. Approximately two thirds of the anti-abrasive tape should be on the headlight surface.

**See Dia #3.**



**Diagram #: 4**

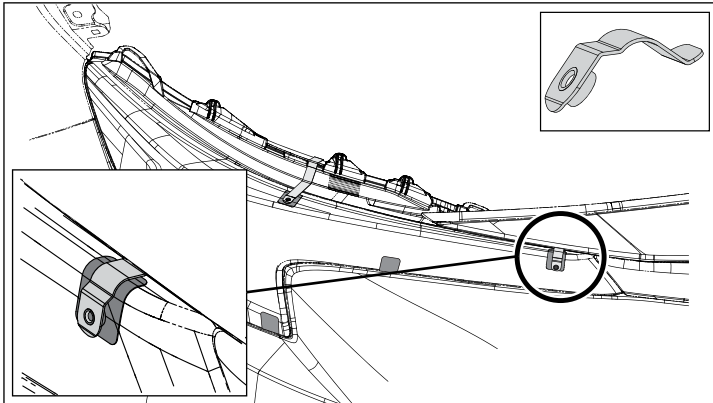
4. At the previously noted and marked top slot position, fit the top metal clip outer to the top of the headlamp.

- A. Install the clip at an angle and engage the barbs.
- B. Press the rear of the clip down flat. You will hear a "snap" when the clip is installed correctly.

**Check:**

- the clip is flat to the headlamp top profile.
- the barb of the clip is engaged to the lamp bucket.
- the metal clip is located on the anti-abrasive tape and not on the headlamp lens.

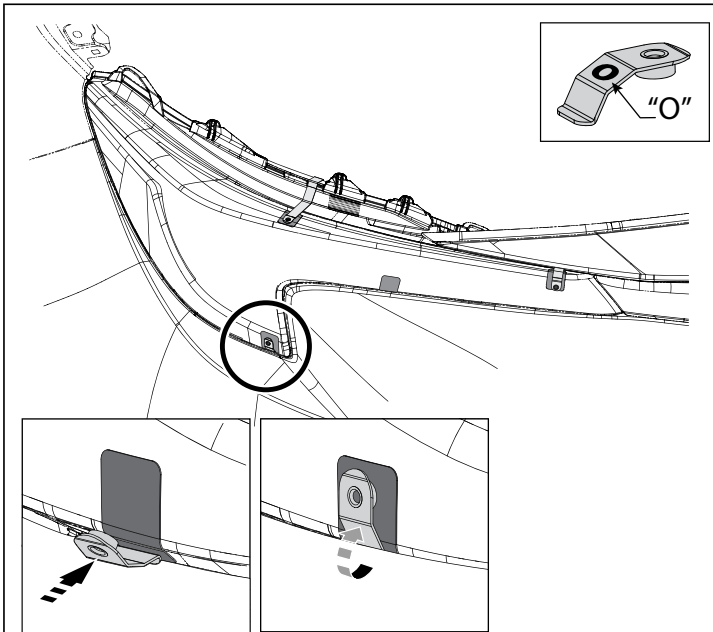
**See Dia #4.**

**Diagram #: 5**

5. At the previously noted and marked top hole position, fit the top metal clip inner to the top of the headlamp by sliding the end of the clip underneath the front fascia.

Ensure that the metal clip is located on the anti-abrasive tape and not on the headlamp lens.

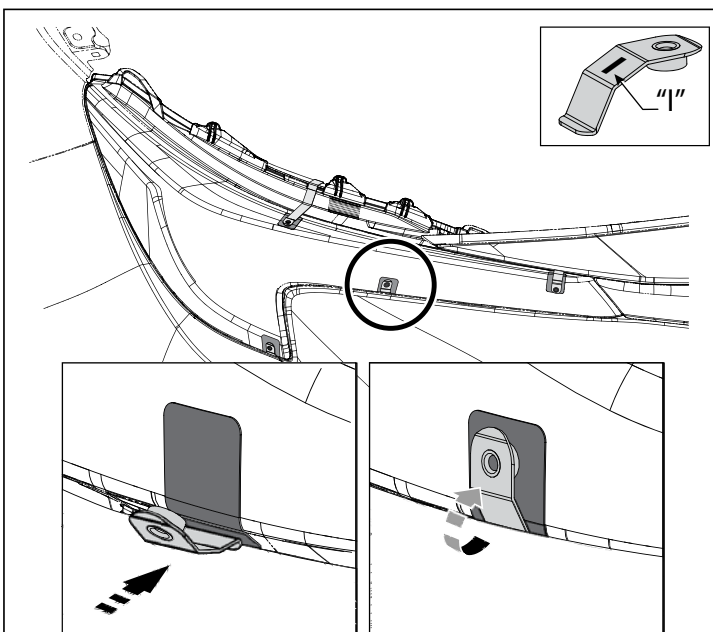
**See Dia #5.**

**Diagram #: 6**

6. At the previously noted position, fit the bottom metal outer clip "O" between the bumper and headlight assembly.

Ensure that the metal clip is located on the anti-abrasive tape and not on the headlight lens.

**See Dia #6.**

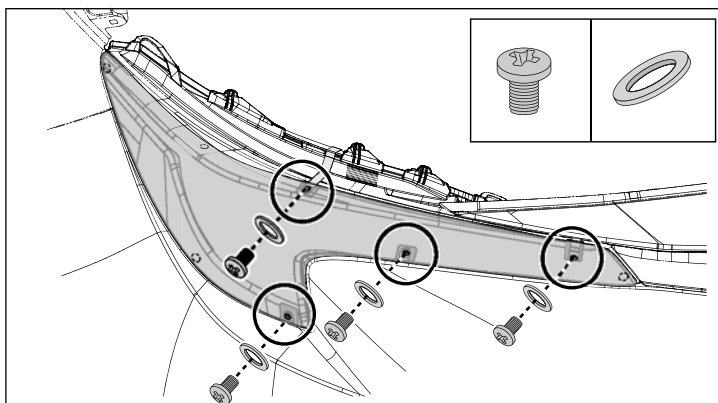
**Diagram #: 7**

7. At the previously noted position, fit the bottom metal inner clip "I" between the bumper and headlight assembly.

Ensure that the metal clip is located on the anti-abrasive tape and not on the headlight lens.

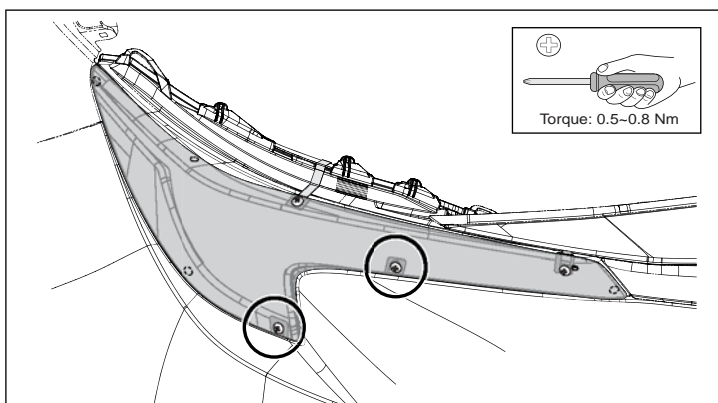
**See Dia #7.**





**Diagram #: 8**

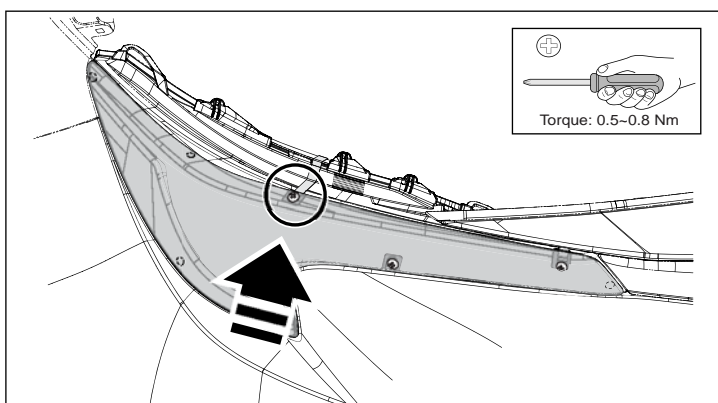
8. Loosely secure the Headlamp Cover to the two bottom metal clips and top metal clips with the screws and washers provided.  
**See Dia #8.**



**Diagram #: 9**

9. Tighten the two bottom screws to the specified torque setting.  
**See Dia #9.**

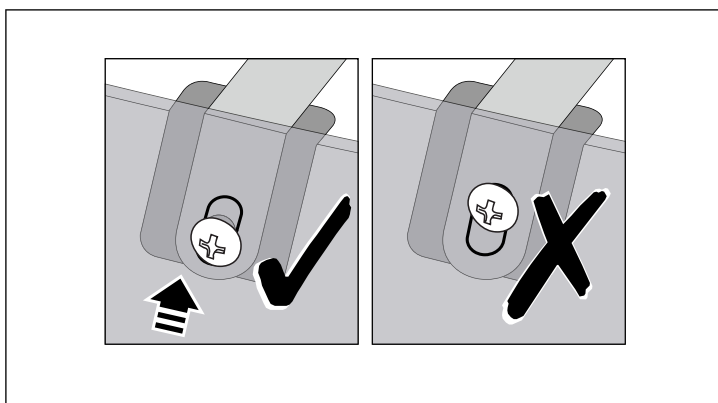
**Note: Ensure torque setting 0.5~0.8Nm is used.**



**Diagram #: 10**

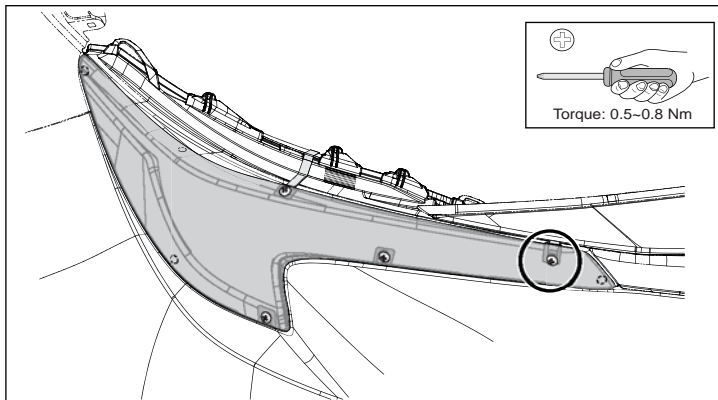
10. Tighten the screw at the top metal outer clip location to the specified torque setting, while applying upwards pressure to the Headlamp Cover.  
**See Dia #10.**

**Note: Ensure torque setting 0.5~0.8Nm is used.**



**Diagram #: 11**

11. Ensure the top outer screw is as close to the bottom of the vertical Headlight Protector slot as possible.  
**See Dia #11.**



**Diagram #: 12**

12. Tighten the screw at the top metal inner clip location to the specified torque setting.

**See Dia #12.**

**Note:** Ensure torque setting 0.5~0.8Nm is used.

**IMPORTANT:** Conduct final inspection, ensuring all screws are tightened, and clips are correctly installed and not touching the headlamp surface.

**TO REMOVE :** Remove screws and washers, then remove Headlamp Cover from the Headlamp Assembly.