



PARTS, SERVICE & ACCESSORIES

COROLLA HATCH

April 2015 Production Onwards

ACRYLIC HEADLAMP COVERS

Installation Instructions

Accessory Part No. PZQ14-12140

Installation Time: Approx. 15 mins

Place these instructions in vehicle's glove box after installation is complete

Care Instructions:

Do not slam bonnet.



Clean Headlamp Covers with a mild detergent and water solution.



Do not use automatic car wash.



Do not use abrasive, spirit or solvent based cleaners.

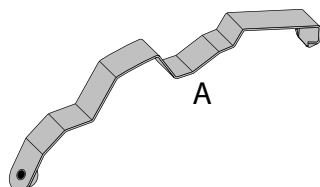
Item	Component Name	Qty	Part number
1	Headlamp Covers Set	1	PZQ14-12140
2	Top Metal Clip	2	PZQ14-1214A
	Bottom Metal Clip	4	
	Washer	6	
	Screw	6	
	Anti-Abrasive Tape	6	
	Alcohol Wipe	1	
	Installation Instruction	1	

**TOYOTA GENUINE**

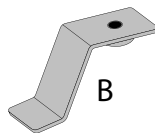
PARTS, SERVICE & ACCESSORIES

COROLLA HATCH ACRYLIC HEADLAMP COVERS**H4296****Accessory Part No. PZQ14-12140**

Item	Qty		Item	Qty	
A	2	Top Metal Clip	E	6	Anti-Abrasive Tape
B	4	Bottom Metal Clip	F	1	Alcohol Wipe
C	6	Screw	G	1	Installation Instruction
D	6	Washer			



A



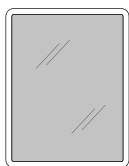
B



C



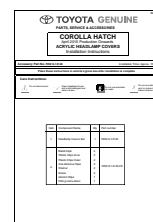
D



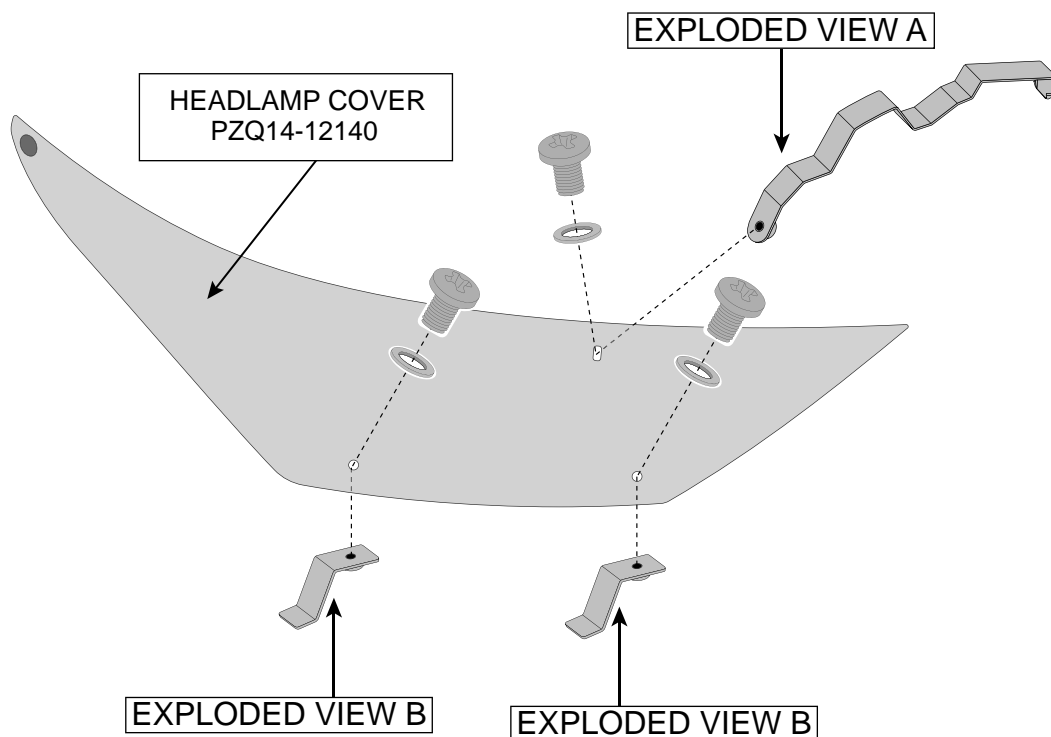
E



F



G

FITTING KIT
PZQ14-1214A

LHS part is mirror image

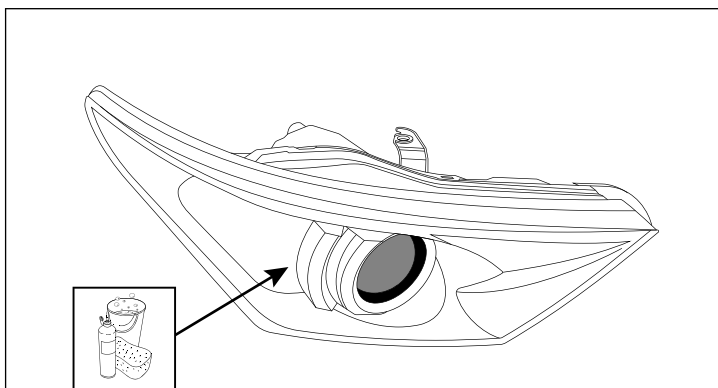


Diagram #: 1

1. Read installation instructions thoroughly before commencing installation. Open the bonnet and thoroughly clean and dry headlamps and surrounding areas.
See Dia #1.

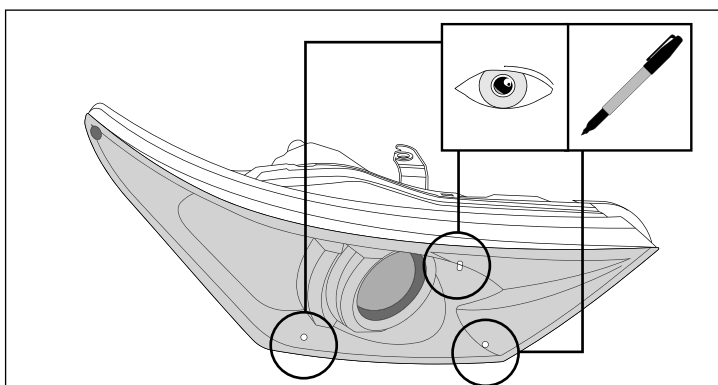


Diagram #: 2

2. Trial fit the Headlamp Cover centrally on the headlamp. Note the slot at the top of the Headlamp Cover and the two holes at the bottom of the Headlamp Cover. Mark these locations onto the headlamp assembly with a non-permanent marker. Remove the Headlamp Cover.
See Dia #2.

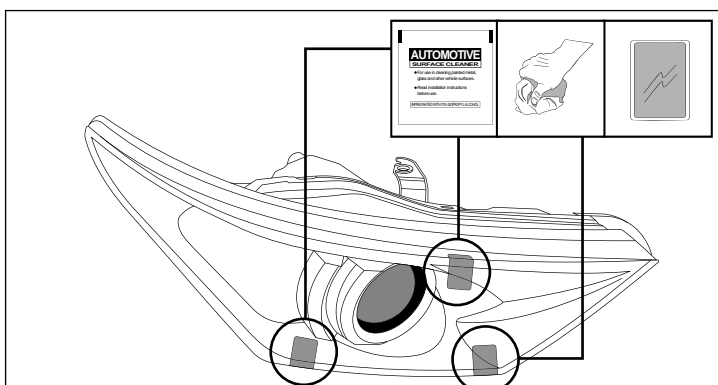


Diagram #: 3

3. At the previously noted and marked locations, clean the headlamp lens with the alcohol wipe provided. Remove any residue with a clean dry cloth. Adhere the anti-abrasive tape strips provided to the locations, approximately two thirds of the anti-abrasive tape should be on the headlamp face.
See Dia #3.

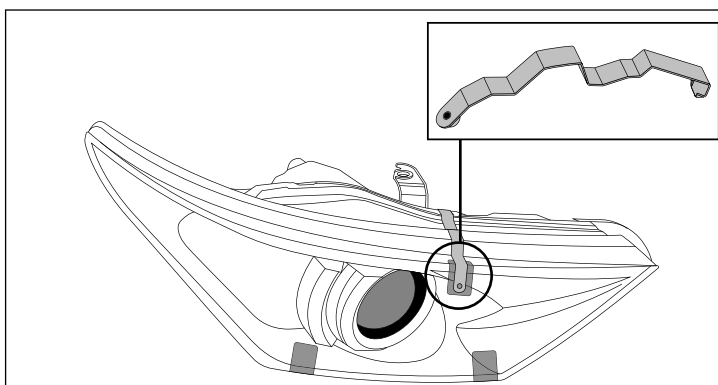
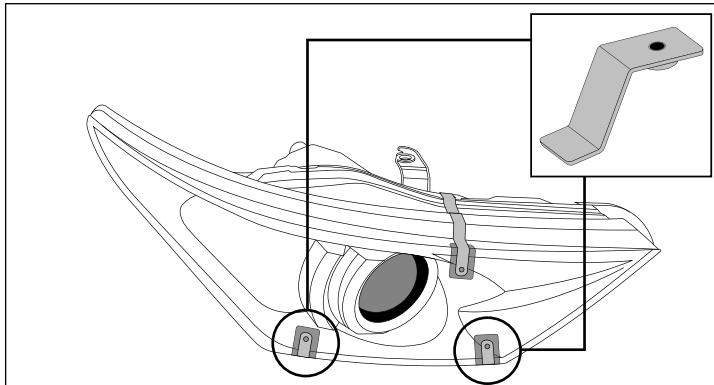


Diagram #: 4

4. At the previously noted and marked top slot position, fit the metal clip to the top of the headlamp. Ensure that the metal clip is located on the anti-abrasive tape strip and not on the headlamp lens.



5. At the two previously noted positions, fit the bottom metal clips between bumper and headlamp assembly. Ensure that the metal clips are located on the anti-abrasive tape strips and not on the headlamp lens.

See Dia #5.

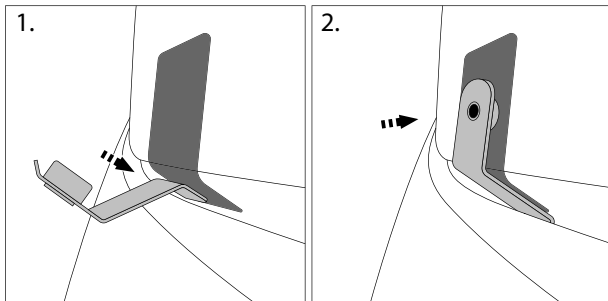
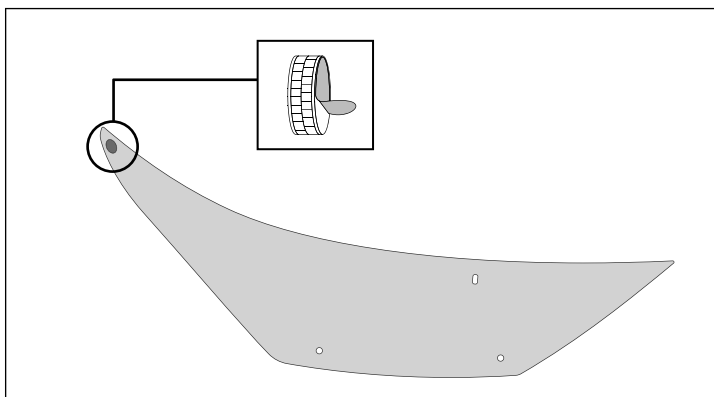


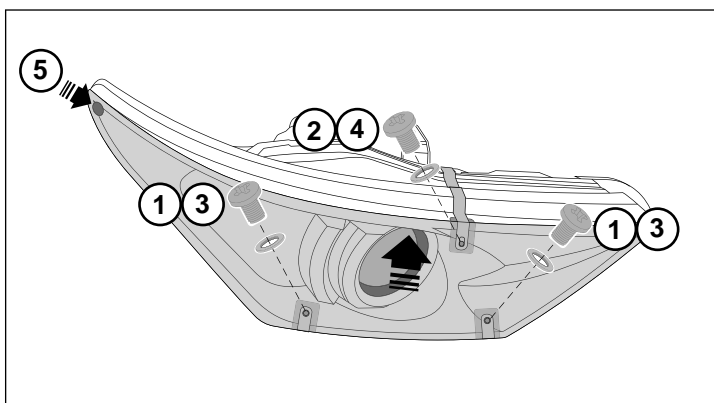
Diagram #: 5



6. Remove the backing tape from the dual-lock disc.

See Dia #6.

Diagram #: 6

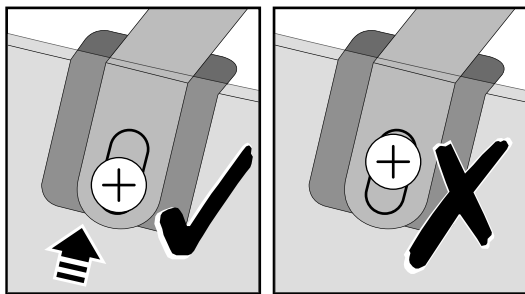


7. To complete installation.

- 1) Position the lower holes in the Headlamp Cover over the bottom metal clips. Loosely secure the Headlamp Cover to the bottom metal clips with screws and washers provided.
- 2) Position the top slot in the Headlamp Cover over the top metal clip. Loosely secure the Headlamp Cover to the top metal clip with screw and washer provided.
- 3) Fully tighten the bottom metal clip screws.
- 4) Apply upwards and inwards pressure to Headlamp Cover, then fully tighten the top metal clip screw.
- 5) Apply firm downward pressure to the dual-lock disc.

See Dia #7.

Diagram #: 7



8. Ensure the screw is as close to the bottom of the vertical Headlight Protector slot as possible for maximum tension.
See Dia #8.

Diagram #: 8

TO REMOVE: Remove screws and washers, then remove Headlamp Cover from the Headlamp assembly.