



PARTS, SERVICE & ACCESSORIES

COROLLA SEDAN

Nov 2016 Production Onwards

ACRYLIC HEADLAMP COVERS

Installation Instructions

Accessory Part No. PZQ14-12160

Installation Time: Approx. 15 mins

Place these instructions in vehicle's glove box after installation is complete

Care Instructions:

Do not slam bonnet.



Clean Headlamp Covers with a mild detergent and water solution.



Do not use automatic car wash.

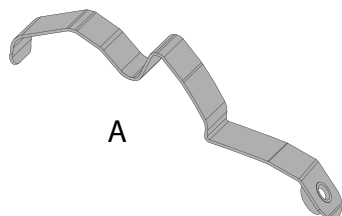
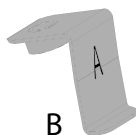
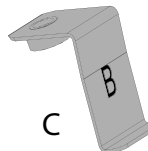
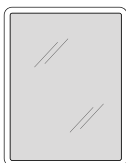
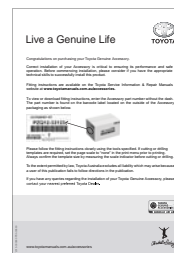
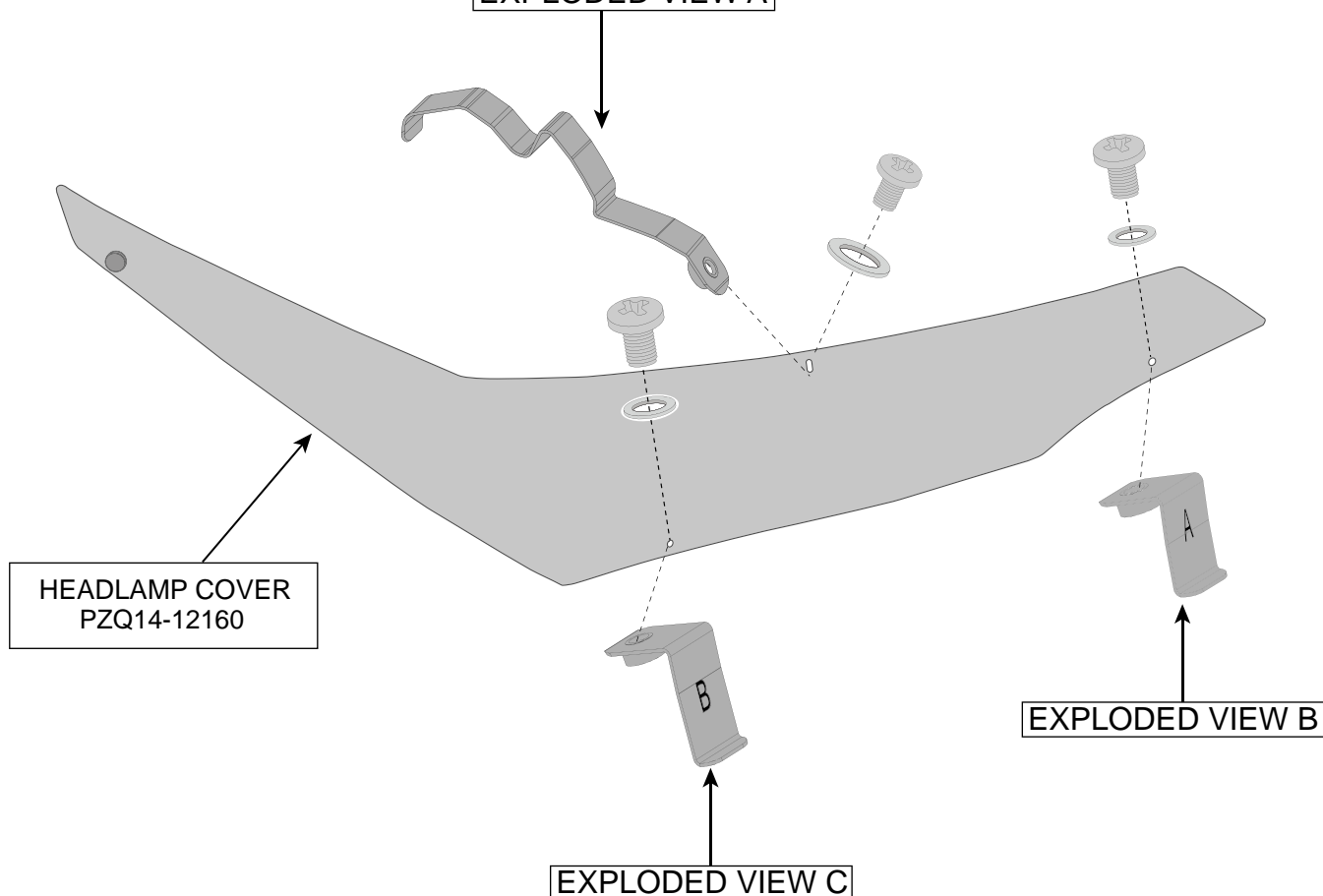


Do not use abrasive, spirit or solvent based cleaners.

Item	Component Name	Qty	Part number
1	Headlamp Covers Set	1	PZQ14-12160
2	Top Metal Clips	2	PZQ14-1216A
	Bottom Metal Inner Clip "A"	2	
	Bottom Metal Outer Clip "B"	2	
	Washers	6	
	Screws	6	
	Anti-Abrasive Tape	6	
	Alcohol Wipe	1	
	Fitting Instruction Flyer	1	



Item	Qty		Item	Qty	
A	2	Top Metal Clips	E	6	Washers
B	2	Bottom Metal Inner Clip "A"	F	6	Anti-Abrasive Tape
C	2	Bottom Metal Outer Clip "B"	G	1	Alcohol Wipe
D	6	Screws	H	1	Fitting Instruction Flyer

**A****B****C****D****E****F****G****H****FITTING KIT**
PZQ14-1216A**EXPLODED VIEW A****HEADLAMP COVER**
PZQ14-12160**EXPLODED VIEW B****EXPLODED VIEW C**

LHS part is mirror image

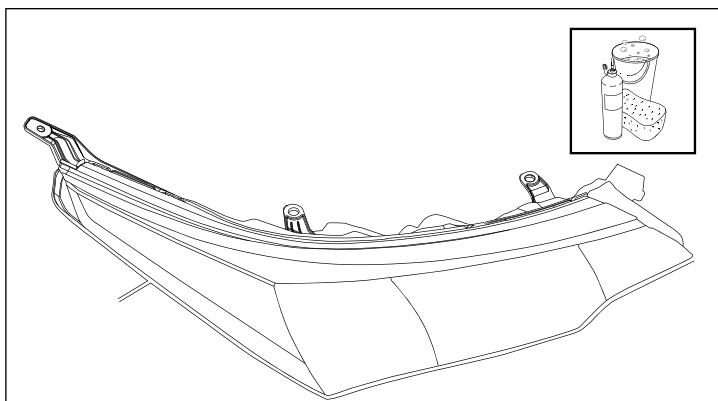


Diagram #: 1

1. Read installation instructions thoroughly before commencing installation. Open the bonnet and thoroughly clean and dry headlamps and surrounding areas.
See Dia #1.

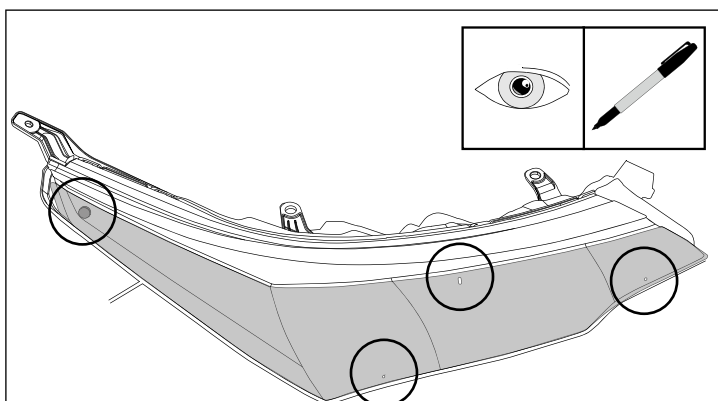


Diagram #: 2

2. Trial fit the Headlamp Cover centrally on the headlamp.

Note the slot at the top of the Headlamp Cover and mark this location onto the headlamp assembly.

Note the two holes at the bottom of the Headlamp Cover and mark these locations onto the bumper directly below the holes.

Also note the dual-lock disc attached to the Headlamp Cover and where it corresponds to the headlamp. Remove the Headlamp Cover.

See Dia #2.

Note: Use a Non-Permanent Marker.

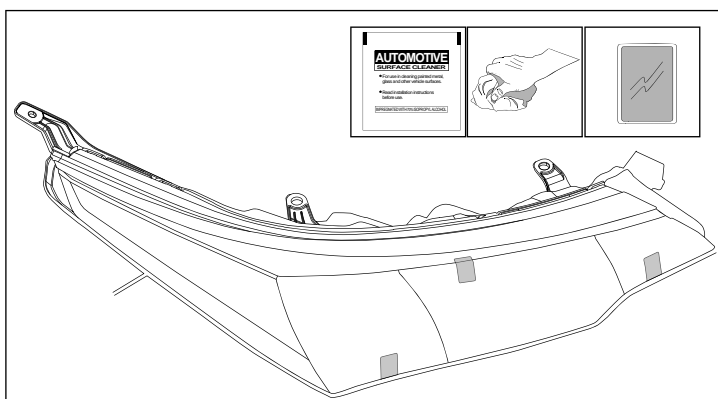


Diagram #: 3

3. At the previously noted and marked slot, hole positions and dual-lock disc location, clean the headlamp lens with the alcohol wipe provided. Remove any residue with a clean dry cloth.

Fit the Headlamp Cover centrally on the headlamp, holding it approximately 1-2cm off the headlamp surface.

Adhere the anti-abrasive tape strips provided to the top slot position and two lower hole positions. Approximately two thirds of the abrasion resistant tape should be on the headlight surface.

See Dia #3.

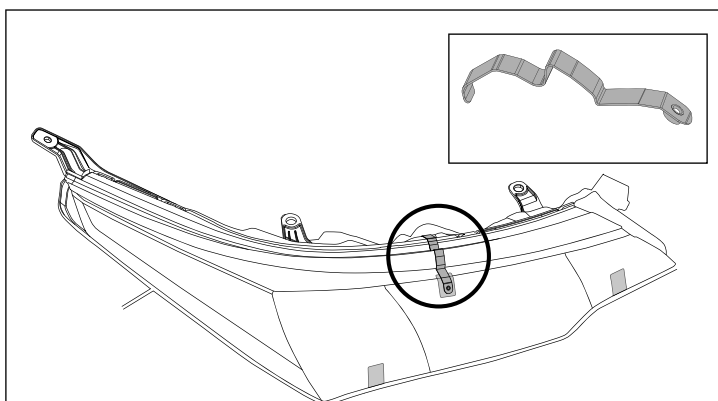


Diagram #: 4

4. At the previously noted and marked top slot position, fit the metal clip to the top of the headlamp.

Ensure that the metal clip is located on the anti-abrasive tape strip and not on the headlamp lens.

See Dia #4.

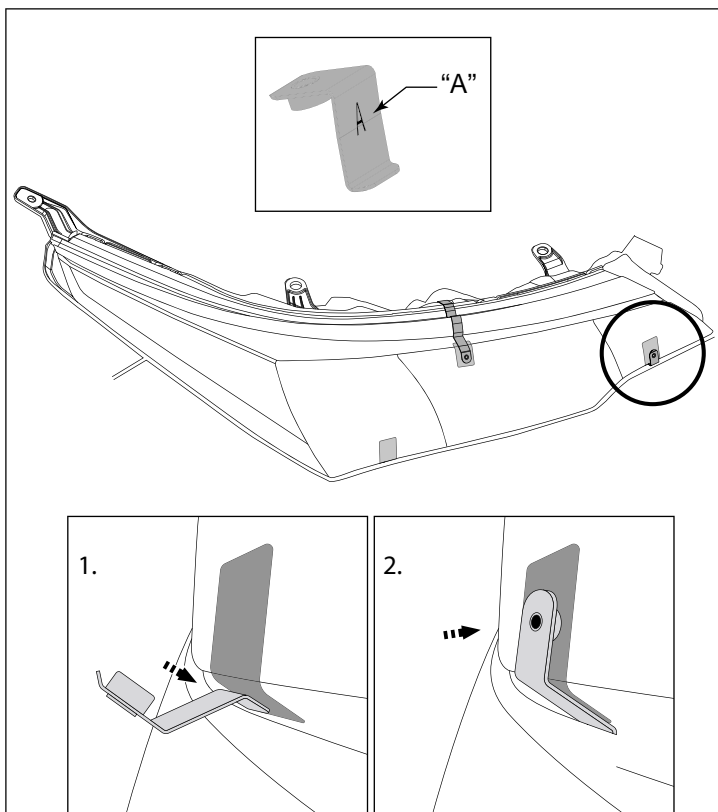


Diagram #: 5

5. At the previously noted position, fit the Bottom Metal Inner Clip "A" between the bumper and headlight assembly.

Ensure that the metal clip is located on the abrasion resistant tape and not on the headlight lens.

See Dia #5.

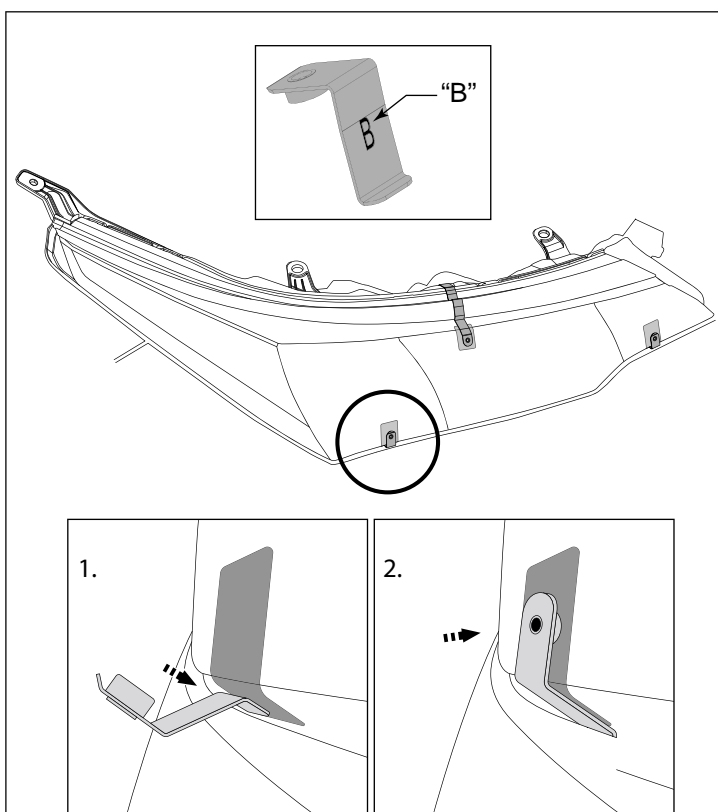


Diagram #: 6

6. At the previously noted position, fit the Bottom Metal Outer Clip "B" between the bumper and headlight assembly.

Ensure that the metal clip is located on the abrasion resistant tape and not on the headlight lens.

See Dia #6.

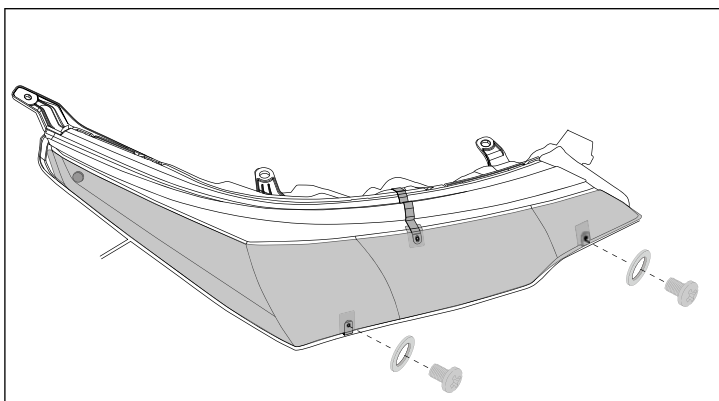


Diagram #: 7

7. Loosely secure the Headlamp Cover to the two bottom metal clips with the screws and washers provided.
See Dia #7.

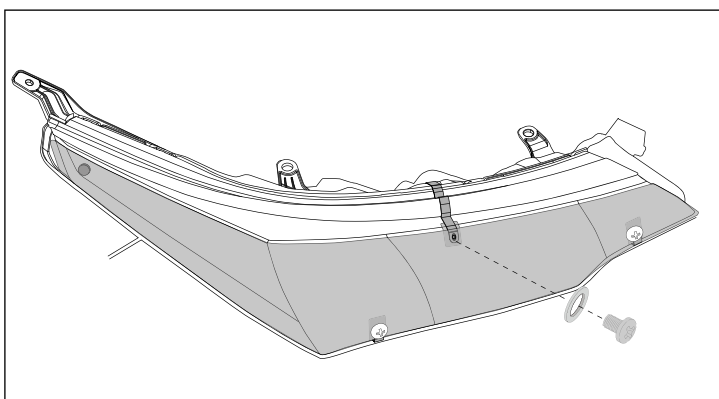


Diagram #: 8

8. Loosely secure the Headlamp Cover to the top metal clip with the remaining screw and washer provided.
See Dia #8.

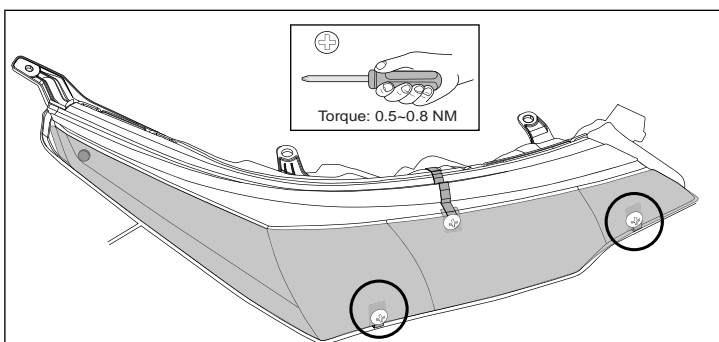


Diagram #: 9

9. Tighten the two bottom metal clip screws to the specified torque setting.
See Dia #9.

Note: Ensure torque setting 0.5~0.8NM is used.

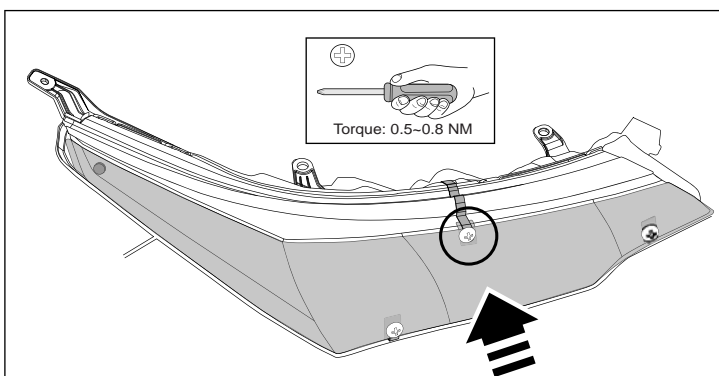


Diagram #: 10

10. Tighten the top metal clip screw to the specified torque setting, while applying upwards pressure to the Headlamp Cover.
See Dia #10.

Note: Ensure torque setting 0.5~0.8NM is used.

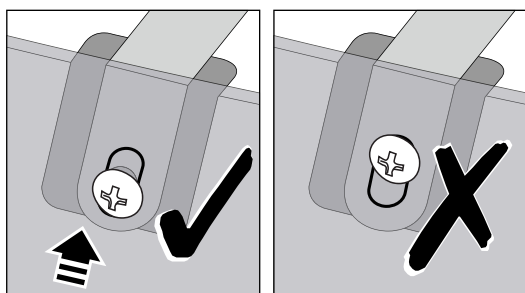


Diagram #: 11

11. Ensure the top screw is as close to the bottom of the vertical Headlight Protector slot as possible.

See Dia #11.

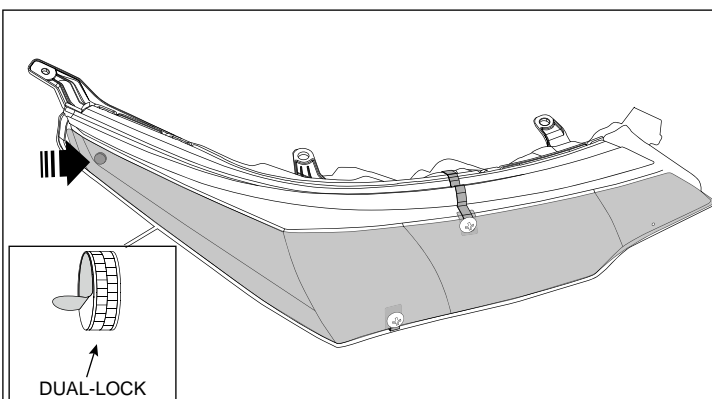


Diagram #: 12

12. At the dual-lock disc location slightly lift the Headlamp cover, and remove the dual-lock disc backing tape.

Apply firm downward pressure to the dual-lock disc to ensure that it adheres to the headlamp lens.

See Dia #12.

Note: Use caution, so not to dislodge the Headlamp Protector.

IMPORTANT: Conduct final inspection, ensuring all screws are tightened, and clips are correctly installed and not touching the headlamp surface.

TO REMOVE: Remove screws and washers, then remove Headlamp Cover from the Headlamp assembly.