



Weather Shield
Fitting Instructions

General Notes

- Read through the fitting instructions before installation of accessory.
- Always install the accessory following the fitting instructions. Failure to do so may cause damage to the vehicle or the accessory.
- Ensure all recyclable discarded vehicle accessory components and packaging are recycled following local recycling regulations.
- It is always recommended that this accessory is fitted by a qualified Toyota Technician.
- Safely store and protect any removed vehicle components.

Safety Notes

- Check that all work practices comply with safety standards.
- Please wear appropriate clothing and use safety equipment.



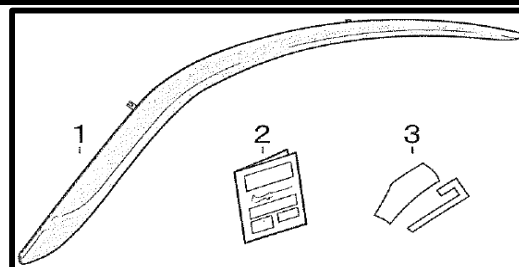
Fitting Time



15 minutes

Parts Supplied

1. Pair of Weathershield
2. Fitting Instruction
3. Template



Tools and Materials Required

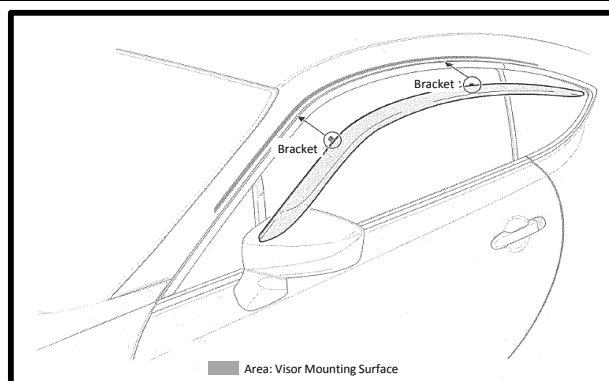


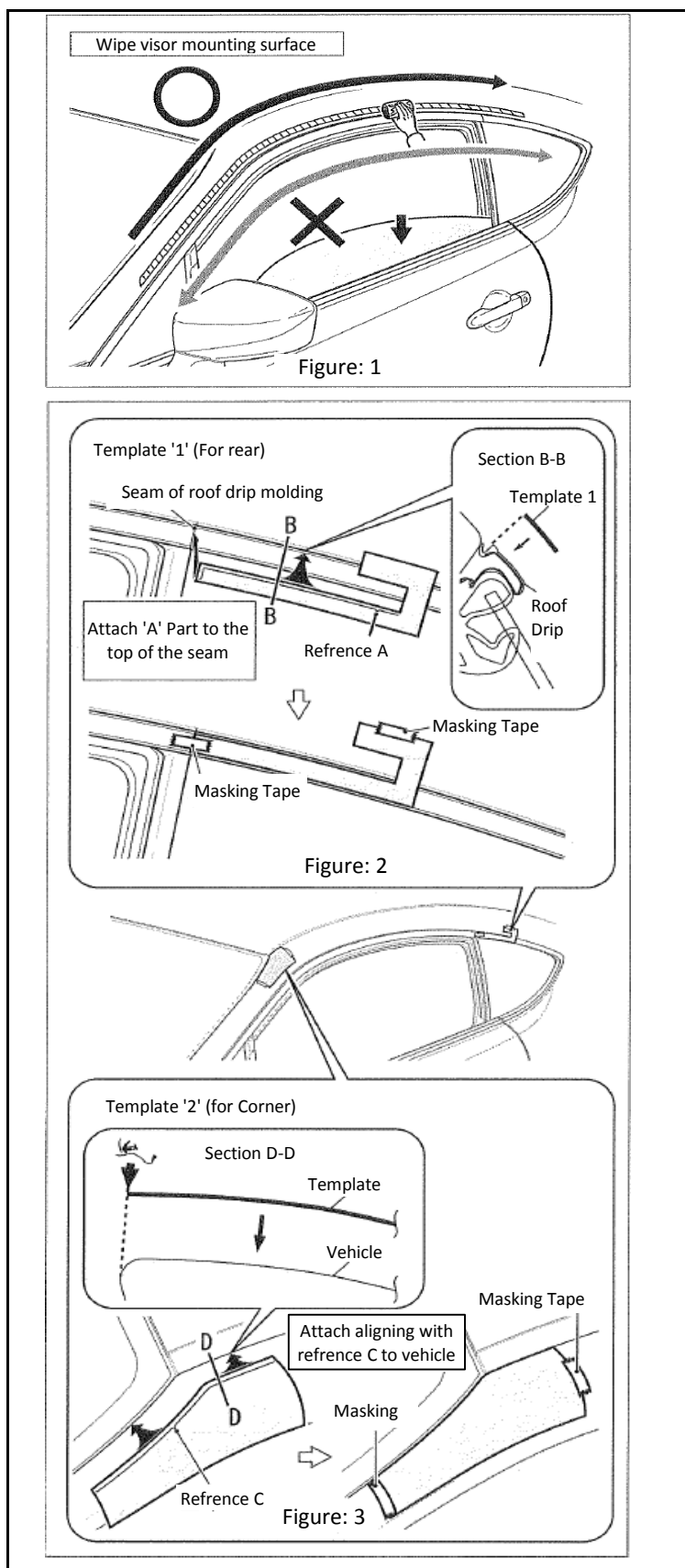
Hex Screwdriver



Masking Tape

Fitted Part





Wipe the mounting Surface

1. Lower door glass. (Figure 1)
2. Wipe highlighted are properly using alcohol wipe.



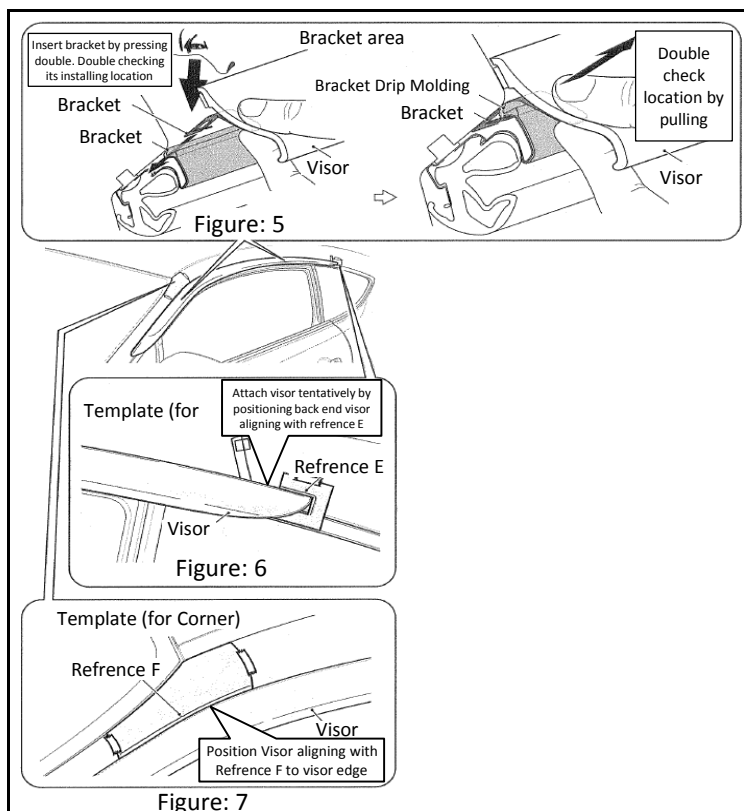
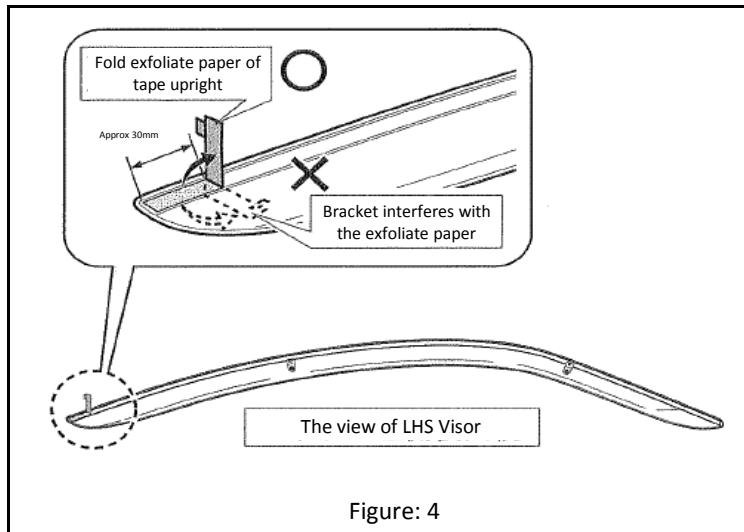
- 1) Make sure the wipe is done properly to prevent peeling off.
- 2) Wipe the surface more than twice in constant direction to prevent the dirt attached.

Application of Template

3. Attach reference 'A' part of the template '1' (for rear window) with masking tape to the top of roof drip moulding seam in accordance with the top (see section B-B).
4. Attach reference 'C' part of the template '2' (for corner) aligning with vehicle shape (see section D-D).



- 1) Place the template properly to avoid part peeling off, interference with door glass, etc.
- 2) Do not discard templates as they are used for RHS by flipping over



Application of Template

5. Peel of the tape cover at back end of the visor



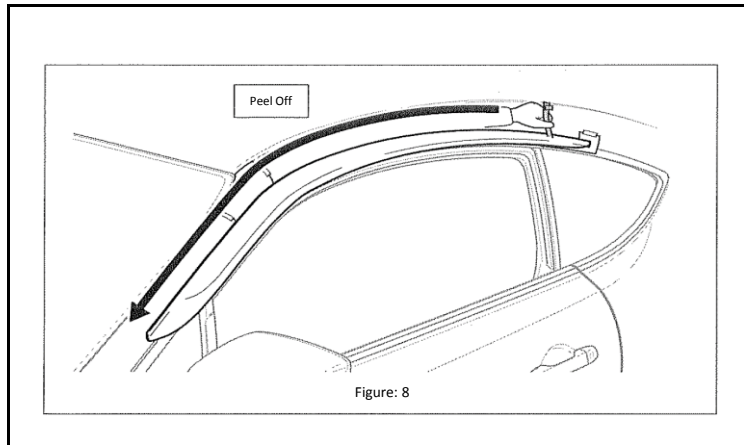
- 1) Ensure the exfoliate paper to be folded upward to visor. Folding downward interferes with bracket adhering visor to vehicle.

Visor Installation

6. Insert bracket by pressing with your fingers, confirming the gap between vehicle and roof drip moulding form above. (Figure 5)
7. Double check to see if bracket is attached properly by slightly pulling forward.
8. Attach visor tentatively by positioning aligning with back end to reference E of mould paper 'D' (for back end)
8. Position by aligning with reference 'F' of template '2' (for corner) to visor edge.



Ensure to position visor properly. Incorrect install may result in malfunction of door glass operation




How to adhere visor

9. Ensure the positioning is made properly (Figure 8).
Adhere visor, peeling off the exfoliate paper. (Do not get the paper twisted)

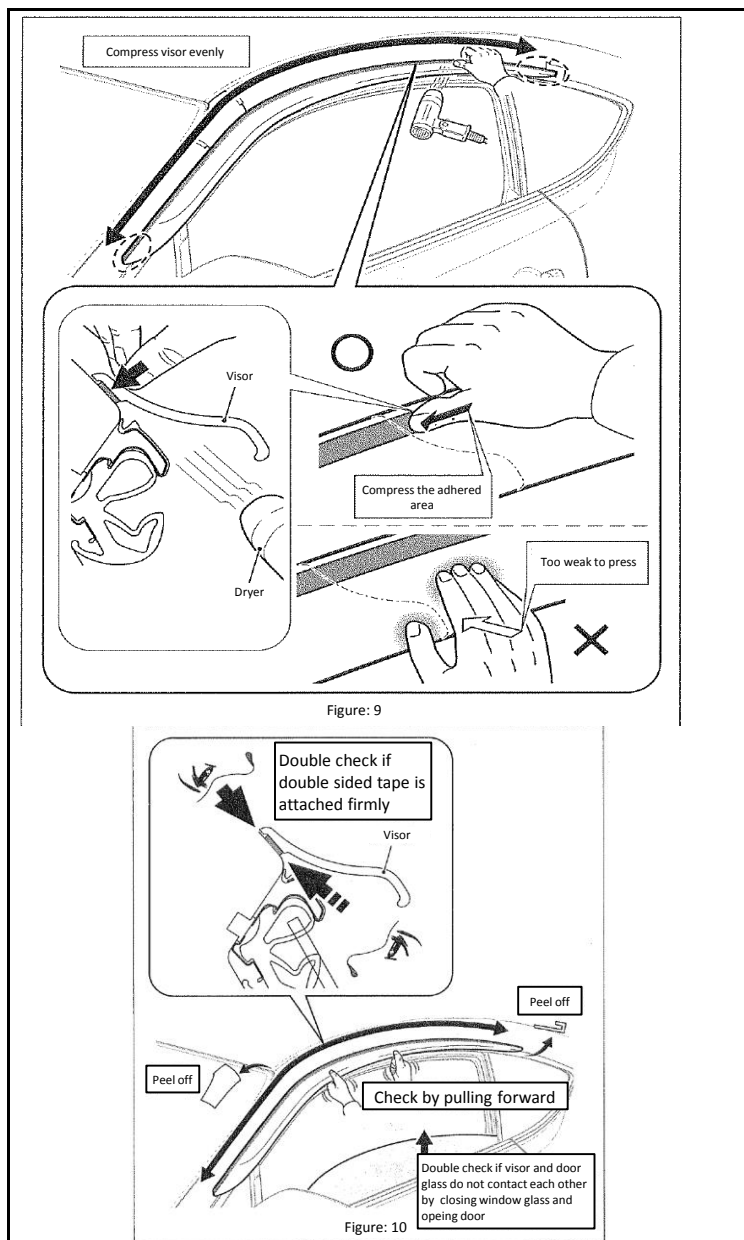
Humidifying and compressing the adhered area

9. Compress the adhered area with over 49N by heating up evenly with a dryer for 30 sec at 40C

Important



- 1) Compress the adhered area properly especially area of the edge and the back end.
Insufficient compression may cause water leak, part peeling off etc.
- 2) Work safely when using a dryer. (May cause injury).



Confirm the work

1. Double check if the entire area of the double sided tape by peering visor from both upper and under
2. Confirm if visor is attached properly by slightly pulling forward
3. Ensure Door glass does not contact visor by closing door glass and opening door
4. Peel off the template paper