



**PARTS, SERVICE & ACCESSORIES**

## RAV 4

November 2015 Production Onwards

### ACRYLIC HEADLAMP COVERS

#### Installation Instructions

**Accessory Part No. PZQ14-42070**

Installation Time: Approx. 15 mins

**READ INSTALLATION INSTRUCTIONS THOROUGHLY BEFORE COMMENCING INSTALLATION.**

**PLACE THESE INSTRUCTIONS IN VEHICLE'S GLOVE BOX AFTER INSTALLATION IS COMPLETE**

#### Care Instructions:



Do not slam bonnet.



Do not use automatic car wash.



Do not use abrasive, spirit or solvent based cleaners.

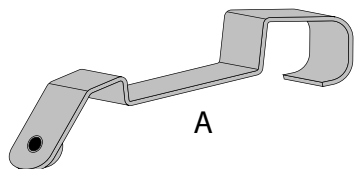


Clean with a mild detergent and water solution.

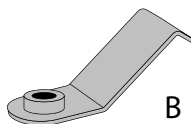
Item	Component Name	Qty	Part number
1	Headlamp Cover Set	1	PZQ14-42070
2	Top Metal Clip	2	PZQ14-4207A
	Inner Bottom Metal Clip	2	
	Outer Bottom Metal Clip	2	
	Washer	6	
	Screw	6	
	Anti-Abrasive Tape	6	
	Alcohol Wipe	1	
	Installation Instruction	1	



Item	Qty		Item	Qty	
A	2	Top Metal Clip	E	6	Washer
B	2	Inner Bottom Metal Clip	F	6	Anti-Abrasive Tape
C	2	Outer Bottom Metal Clip	G	1	Alcohol Wipe
D	6	Screw	H	1	Installation Instruction



A



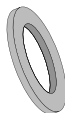
B



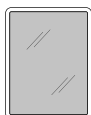
C



D



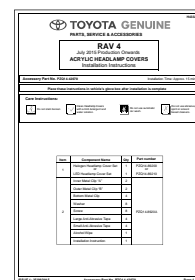
E



F

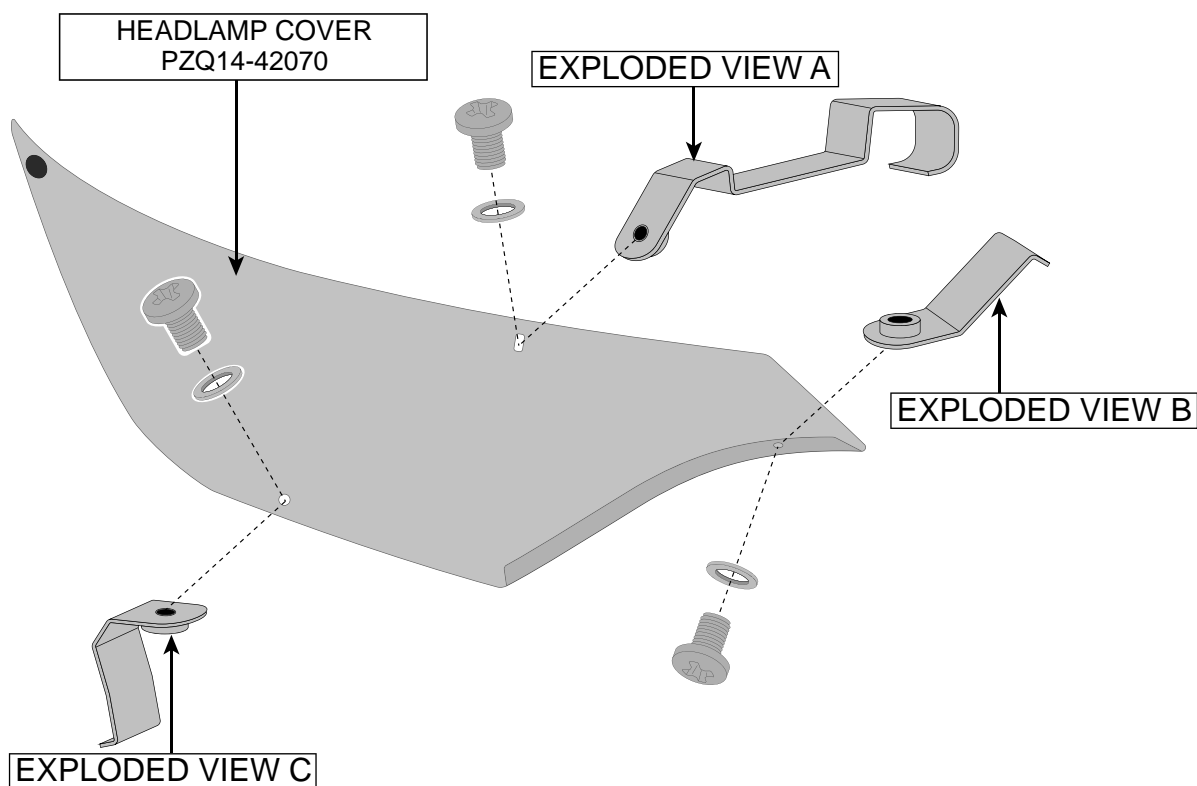


G



H

FITTING KIT  
PZQ14-4207A



LHS part is mirror image

IMAGE IS FOR REFERENCE ONLY

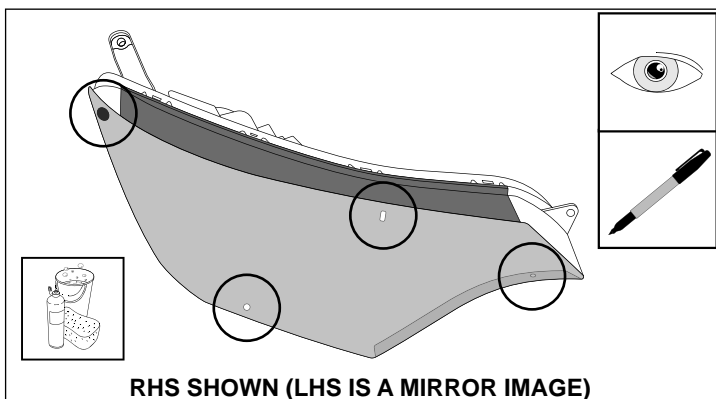


Diagram #: 1

1. Open the bonnet and thoroughly clean and dry headlamps and surrounding areas.  
Trial fit the Headlamp Cover centrally on the headlamp.

Note the slot at the top of the Headlamp Cover and mark this location onto the headlamp assembly.

Note the two holes at the bottom of the Headlamp Cover and mark these locations onto the bumper directly below the holes.

Note the dual-lock disc attached to the Headlamp Protector.  
Remove the Headlamp Cover.

**See Dia #1.**

**Note: Use a Non-Permanent Marker.**

2. Carefully peel back the rubber extrusion past the noted top metal clip location. Do not fully remove the rubber extrusion.

**See Dia #2.**

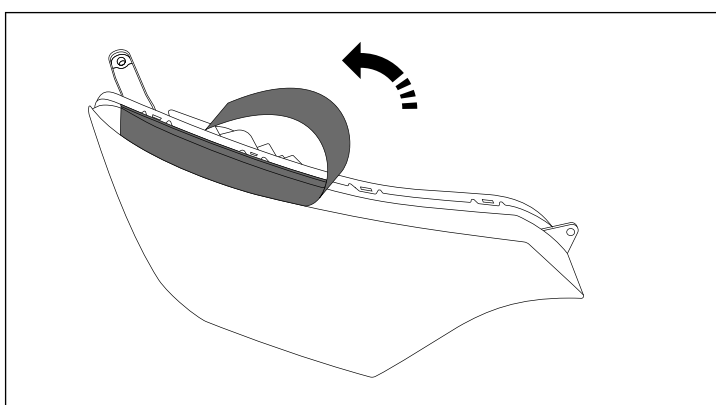


Diagram #: 1

3. At the previously noted and marked location, clean the headlamp lens and remove pen marks with the alcohol wipe provided. Remove any residue with a clean dry cloth.

Fit the Headlamp Cover centrally on the headlamp, holding it approximately 1-2cm off the headlamp surface. Adhere two thirds of the anti-abrasive tape directly below the slot onto the headlamp surface

Remove Headlamp cover.

**See Dia #3.**

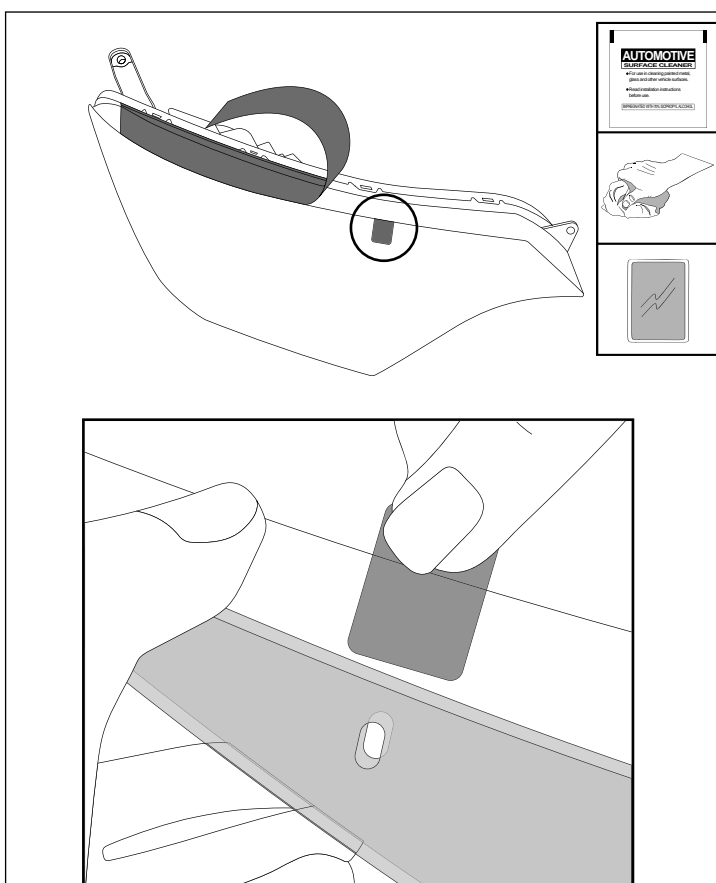
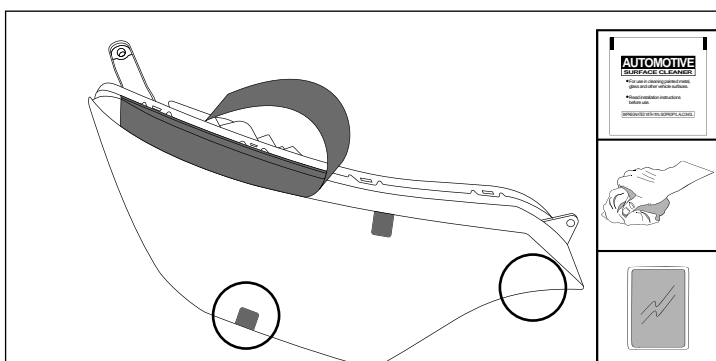


Diagram #: 3



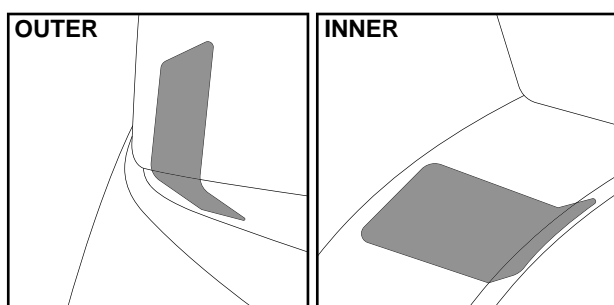
4. At the previously noted and marked locations, clean the headlamp lens with the alcohol wipe provided. Remove any residue with a clean dry cloth.

At the outer bottom clip position adhere two thirds of one anti-abrasive tape strip to the headlamp face directly above the pen mark on the bumper.

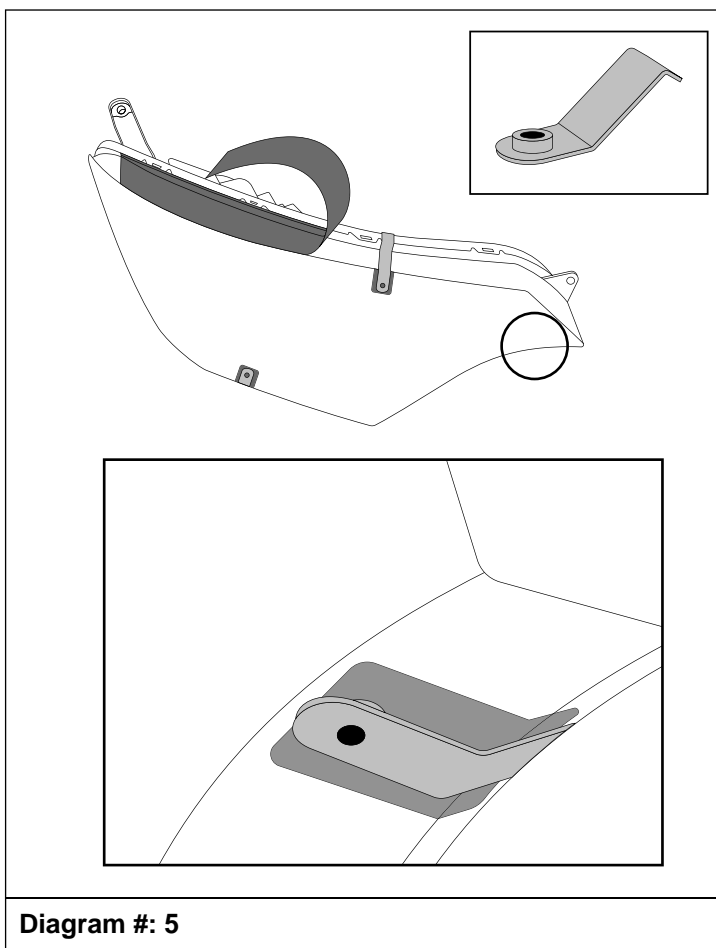
At the inner bottom clip position adhere one anti-abrasive tape strip to the underside of the headlamp lens directly above the pen mark on the bumper.

Remove pen marks from the bumper with the alcohol wipe provided.

**See Dia #4.**



**Diagram #: 4**



5. At the previously noted positions, fit the inner bottom metal clip between the bumper and headlamp assembly. Ensure that the metal clip is located on the anti-abrasive tape strip and not on the headlamp lens.

**See Dia #5.**

**Note: If clip is difficult to insert, carefully pry the bumper down using a plastic pry bar.**

**Diagram #: 5**

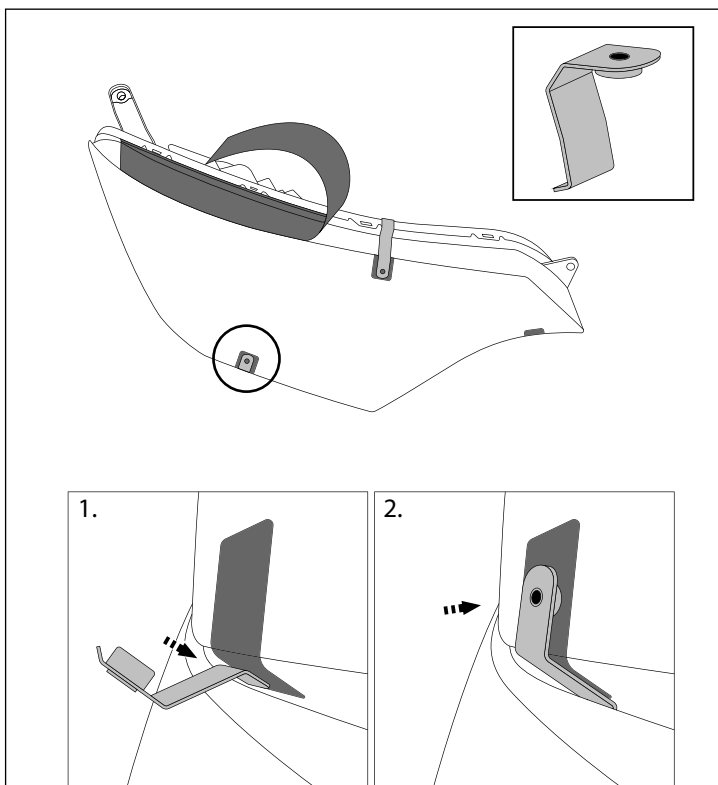


Diagram #: 6

6. At the previously noted positions, fit the outer bottom metal clip between the bumper and headlamp assembly. Ensure that the metal clip is located on the anti-abrasive tape strip and not on the headlamp lens.

**See Dia #6.**

**Note:** If clip is difficult to insert, carefully pry the bumper down using a plastic pry bar.

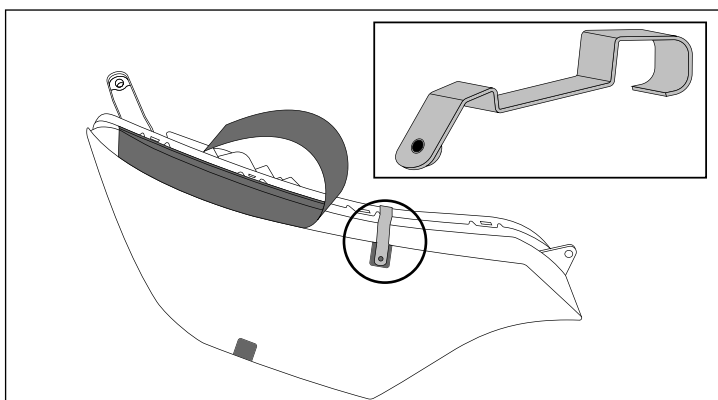


Diagram #: 7

7. At the previously noted and marked top slot position, fit the top metal clip to the top of the headlamp. Ensure that the metal clip is located on the anti-abrasive tape strip and not on the headlamp lens.

**See Dia #7.**

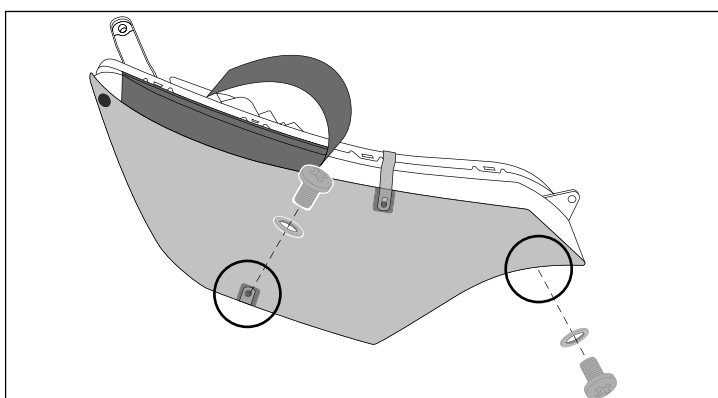


Diagram #: 8

8. Loosely secure the Headlamp Cover to the bottom metal clips with the screws and washers provided.

**See Dia #8.**

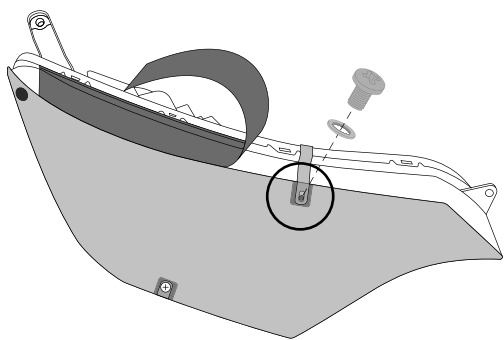


Diagram #: 9

9. Loosely secure the Headlamp Cover to the top metal clip with the screw and washer provided.  
**See Dia #9.**

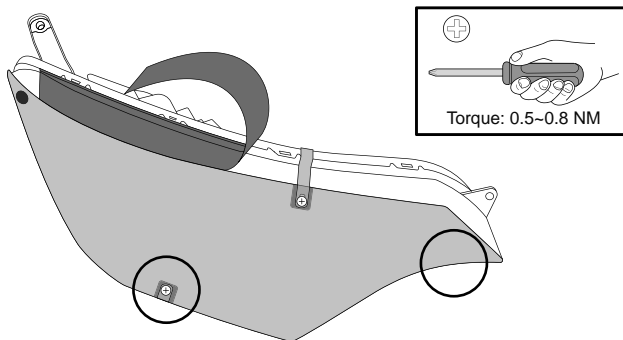
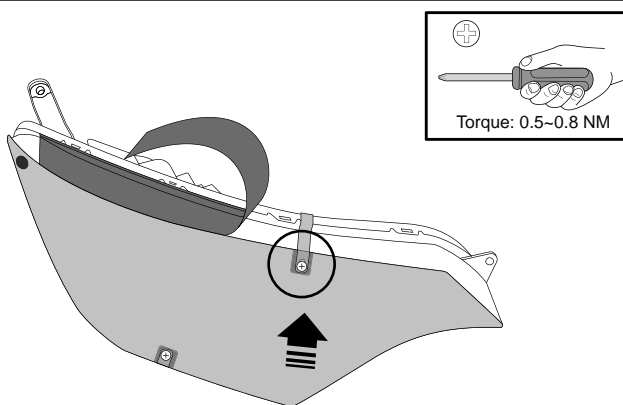


Diagram #: 10

10. Tighten the bottom metal clip screws to the specified torque setting.  
**See Dia #10.**

**Note: Ensure torque setting 0.5~0.8NM is used.**



11. Tighten the top metal clip screw to the specified torque setting, while applying upwards pressure to the Headlamp Cover.

Ensure the screw is as close to the bottom of the Headlamp Cover slot as possible.

**See Dia #11.**

**Note: Ensure torque setting 0.5~0.8NM is used.**

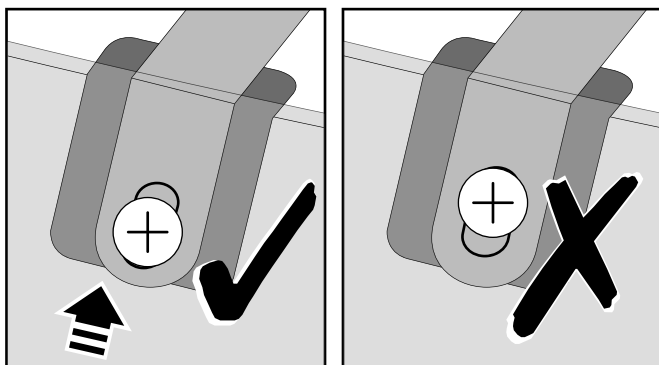
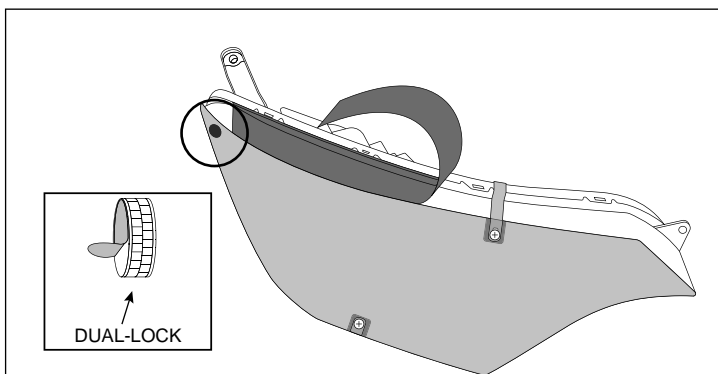


Diagram #: 11

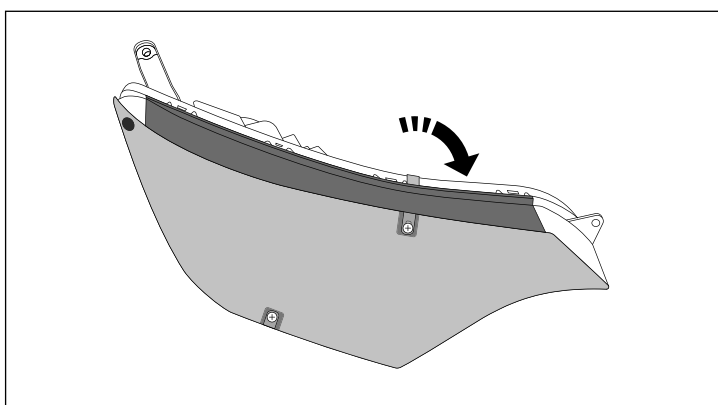


**Diagram #: 12**

**12.** At the dual-lock disc location slightly lift the Headlamp cover, and remove the dual-lock disc backing tape.

Apply firm downward pressure to the dual-lock disc to ensure that it adheres to the headlamp lens.

**See Dia #12.**



**Diagram #: 13**

**13.** Reposition the rubber extrusion over the top metal clip.

**See Dia #13.**

**TO REMOVE:** Reverse the above procedure.

**IMPORTANT:** Conduct final inspection, ensuring all screws are tightened, and clips are correctly installed and not touching the headlamp surface.