

PARTS, SERVICE & ACCESSORIES

PRIUS V

April 2012 Production Onwards

ACRYLIC BONNET PROTECTOR

Installation Instructions

Accessory Part No. PZQ15-47050

Installation Time: Approx. 15 mins

Place these instructions in vehicle's glove box after installation is complete
Care Instructions:


Do not slam bonnet.

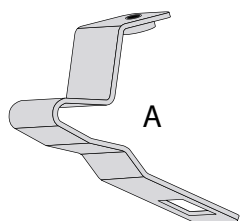

 Clean Bonnet Protector
with a mild detergent and
water solution.

 Do not use automatic
car wash.

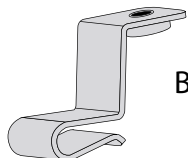
 Do not use abrasive,
spirit or solvent
based cleaners.

| Item | Component Name | Qty | Part number |
|------|--------------------------|-----|---------------|
| 1 | Bonnet Protector | 1 | PZQ15-47050 |
| 2 | Centre Metal Clips | 2 | PZQ15-47050FK |
| | Metal Wing Clips | 2 | |
| | Small Screws | 4 | |
| | Washers | 4 | |
| | Self Tapping Screws | 2 | |
| | Screw Plugs | 2 | |
| | Anti-Abrasive Tape | 4 | |
| | Alcohol Wipe | 1 | |
| | Installation Instruction | 1 | |

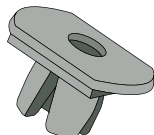
| Item | Qty | | Item | Qty | |
|----------|-----|--------------------|----------|-----|--------------------------|
| A | 2 | Centre Metal Clips | F | 4 | Anti-Abrasive Tape |
| B | 2 | Metal Wing Clips | G | 2 | Self Tapping Screws |
| C | 2 | Screw Plugs | H | 1 | Alcohol Wipe |
| D | 4 | Small Screws | I | 1 | Installation Instruction |
| E | 4 | Washers | | | |



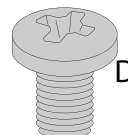
A



B



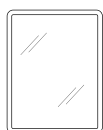
C



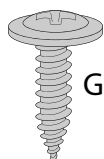
D



E



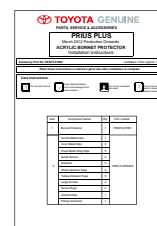
F



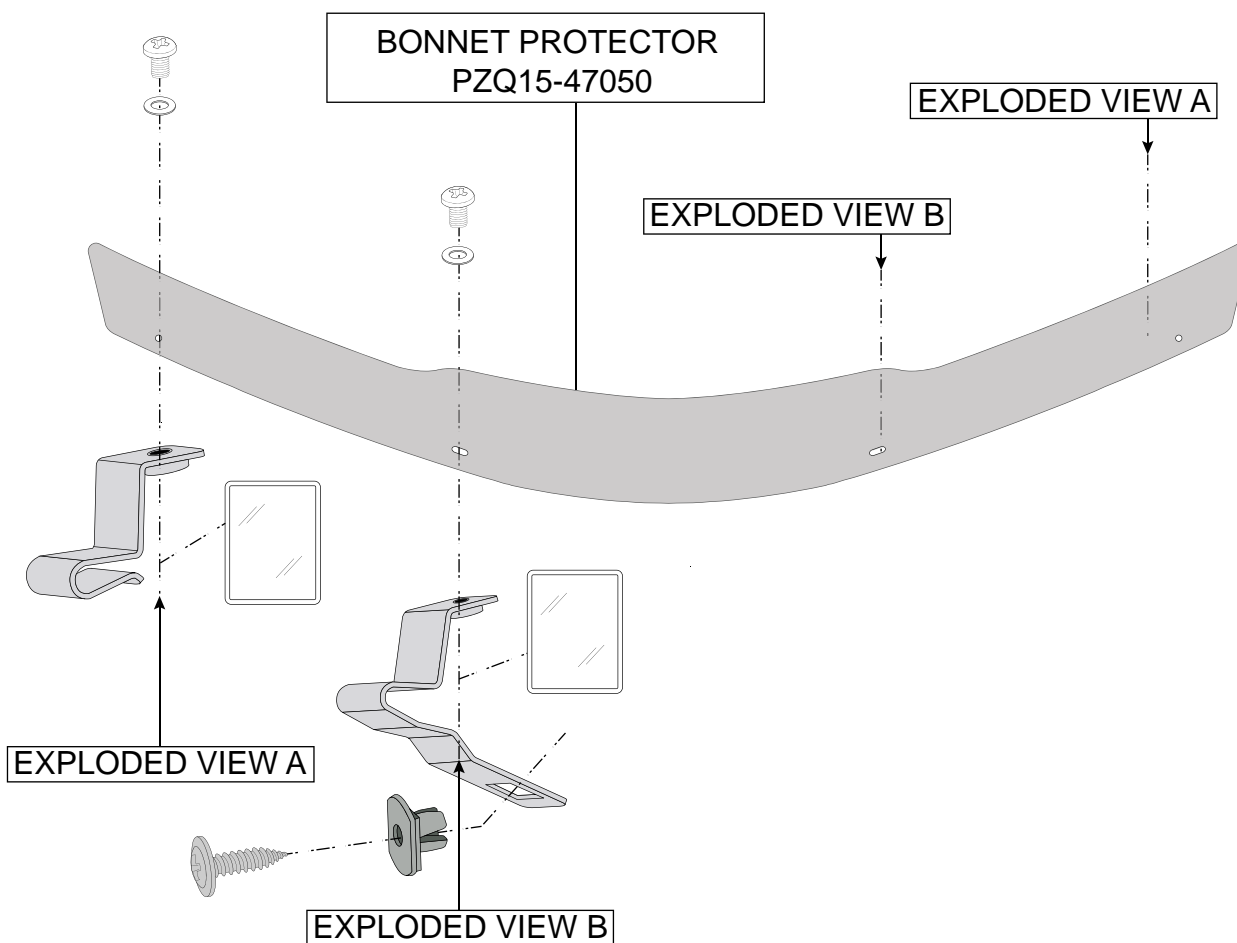
G

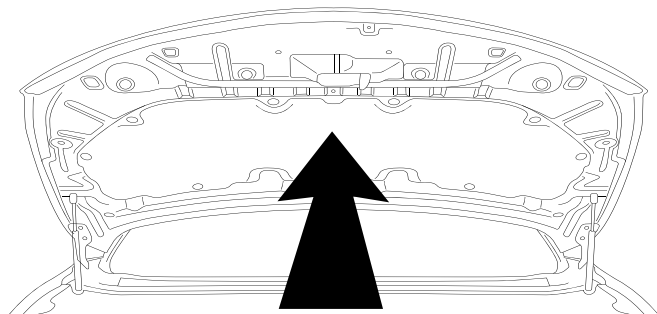
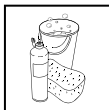


H

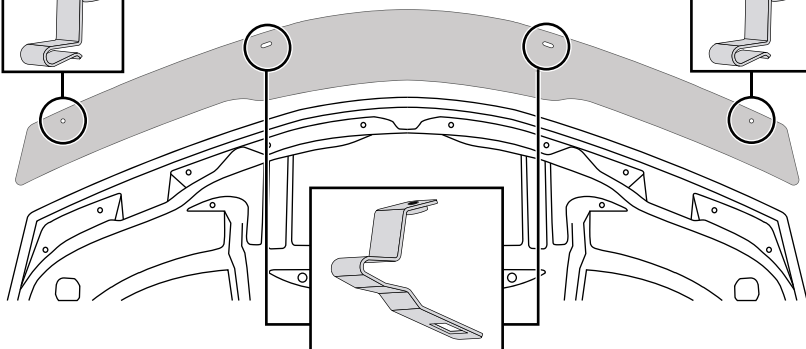
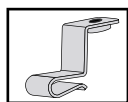


I

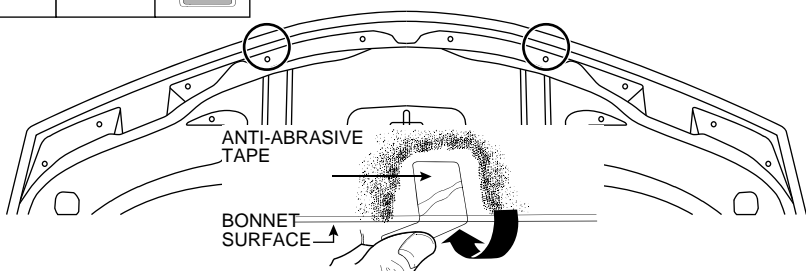
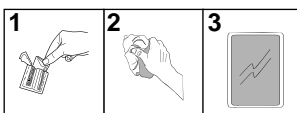
FITTING KIT
PZQ15-47050FK



Diagram #: 1

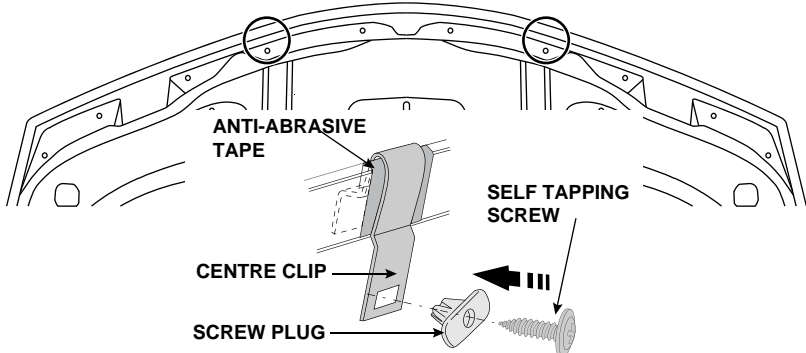
1. Open & thoroughly clean and dry the bonnet. **See Dia #1.**


Diagram #: 2

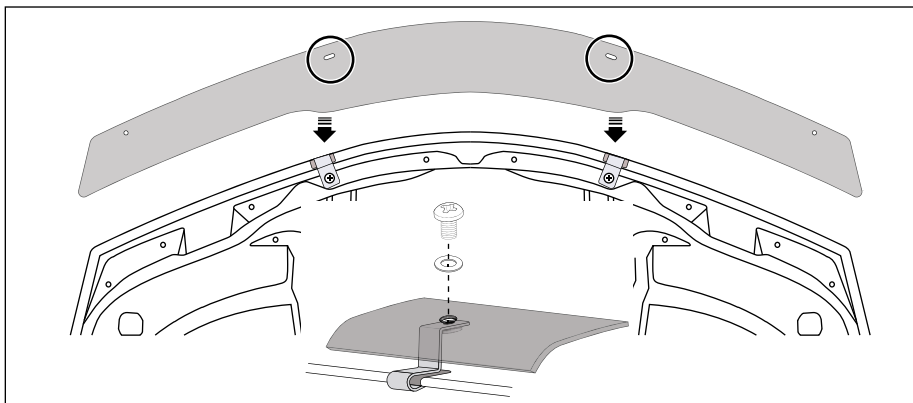
2. Trial fit the Bonnet Protector centrally onto bonnet. With a non-permanent marker, note the positions of the two centre slots in the Bonnet Protector that correspond to the underside of the bonnet. Also note and mark the wing clip positions corresponding to the outer holes of the Bonnet Protector.
Remove Bonnet Protector.
See Dia #2.


Diagram #: 3

3. Trial fit the centre metal clips aligning the rectangular holes in the clips with the holes in the bonnet. Note where the clips make contact with the bonnet areas, remove clips. Clean these areas with the alcohol wipe provided. Wipe off any residue with a dry clean cloth. Adhere the anti-abrasive tape over the bonnet lip. Apply tape so approximately half of the tape is on the topside and half is on the underside of the bonnet.
See Dia #3.

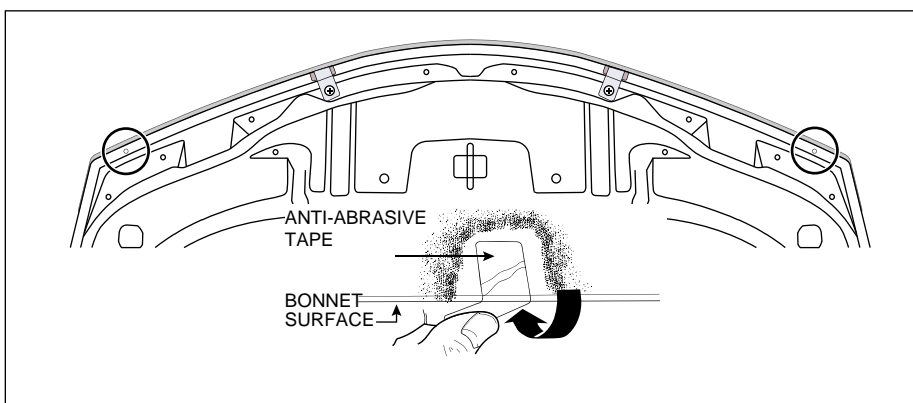

Diagram #: 4

4. Position the centre metal clips onto bonnet and secure the clips by pressing the screw plug through the metal clip into the bonnet, next insert self tapping screws into the screw plugs, as shown.
See Dia #4
IMPORTANT: Ensure that the clips are positioned over anti-abrasive tape and do not come in contact with any of the bonnet's paint work. Failure to do this may result in permanent paint damage.


Diagram #: 5

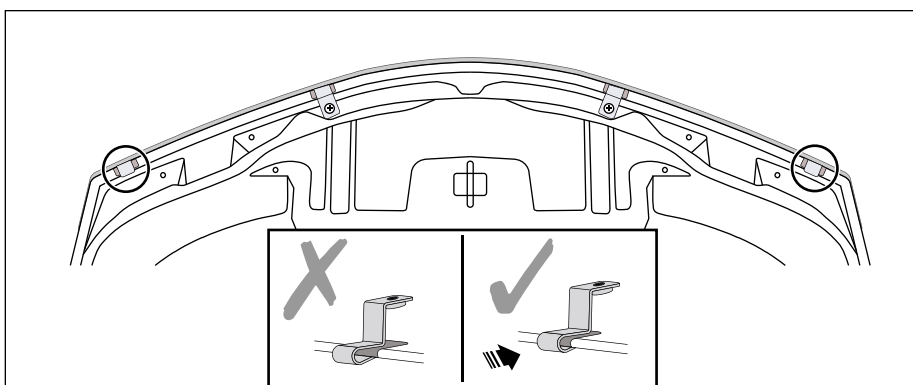
5. Fit the Bonnet Protector centrally to bonnet and loosely secure to the top of centre metal clips with the small screws and washers provided.

See Dia #5.


Diagram #: 6

6. Note the previously marked areas under the wing clip hole locations. Clean bonnet with the alcohol wipe provided and wipe off any residue with a dry clean cloth. Adhere the anti-abrasive tape strips over the bonnet lip directly below the wing clip holes. Apply tape so approximately half of the tape is on the topside and half is on the underside of the bonnet.

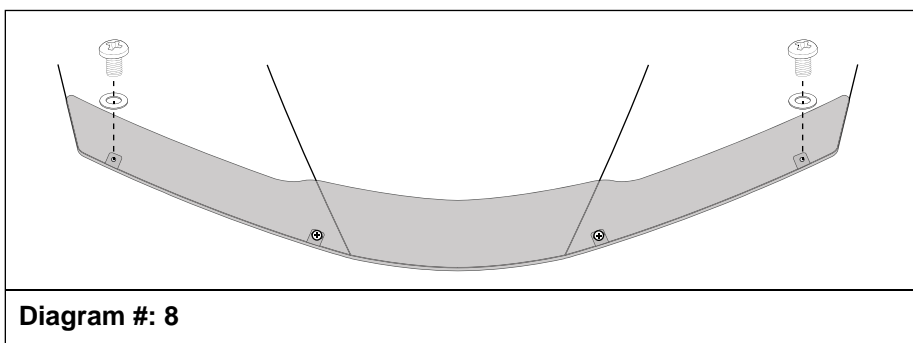
See Dia #6.


Diagram #: 7

7. Push the metal wing clips onto bonnet locating the metal wing clips over the anti-abrasive tape strips on the bonnet lip, as shown.

See Dia #7.

IMPORTANT: Ensure that the clips are positioned over anti-abrasive tape and do not come in contact with any of the bonnet's paint work. Failure to do this may result in permanent paint damage.


Diagram #: 8

8. Loosely secure the Bonnet Protector to all the metal clips with the screws and washers provided. With all screws still loose, ensure Bonnet Protector is aligned centrally & gently tighten all screws.

See Dia #8.

IMPORTANT: Conduct final inspection, ensuring all fasteners are tightened, and clips are correctly installed and not touching painted surfaces. Close bonnet and check clearances at all edges for interference and adjust if necessary.

TO REMOVE: Reverse the above procedure.