



PARTS, SERVICE & ACCESSORIES

PRADO

September 2017 Production Onwards

ACRYLIC HEADLAMP COVERS

Installation Instructions

Accessory Part No. PZQ14-60210

Installation Time: Approx. 15 mins

Place these instructions in vehicle's glove box after installation is complete

Care Instructions:



Do not slam bonnet.



Clean Headlamp Covers
with a mild detergent and
water solution.



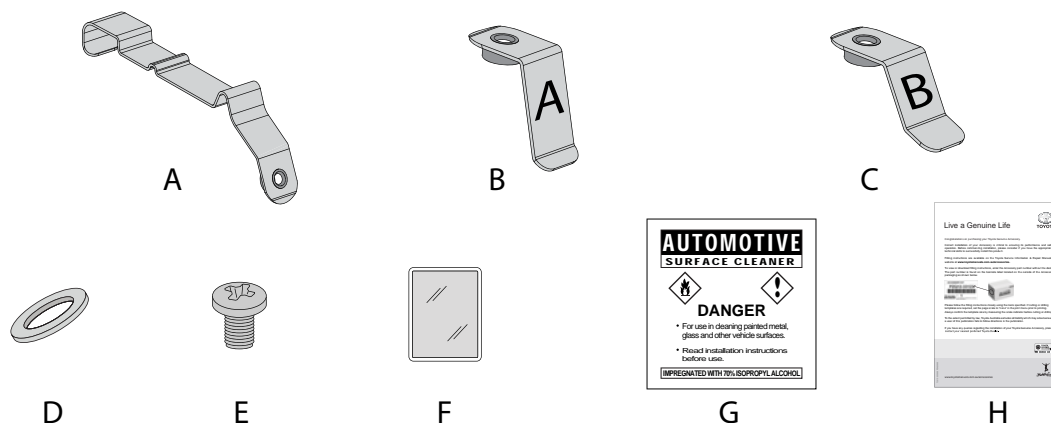
Do not use automatic
car wash.



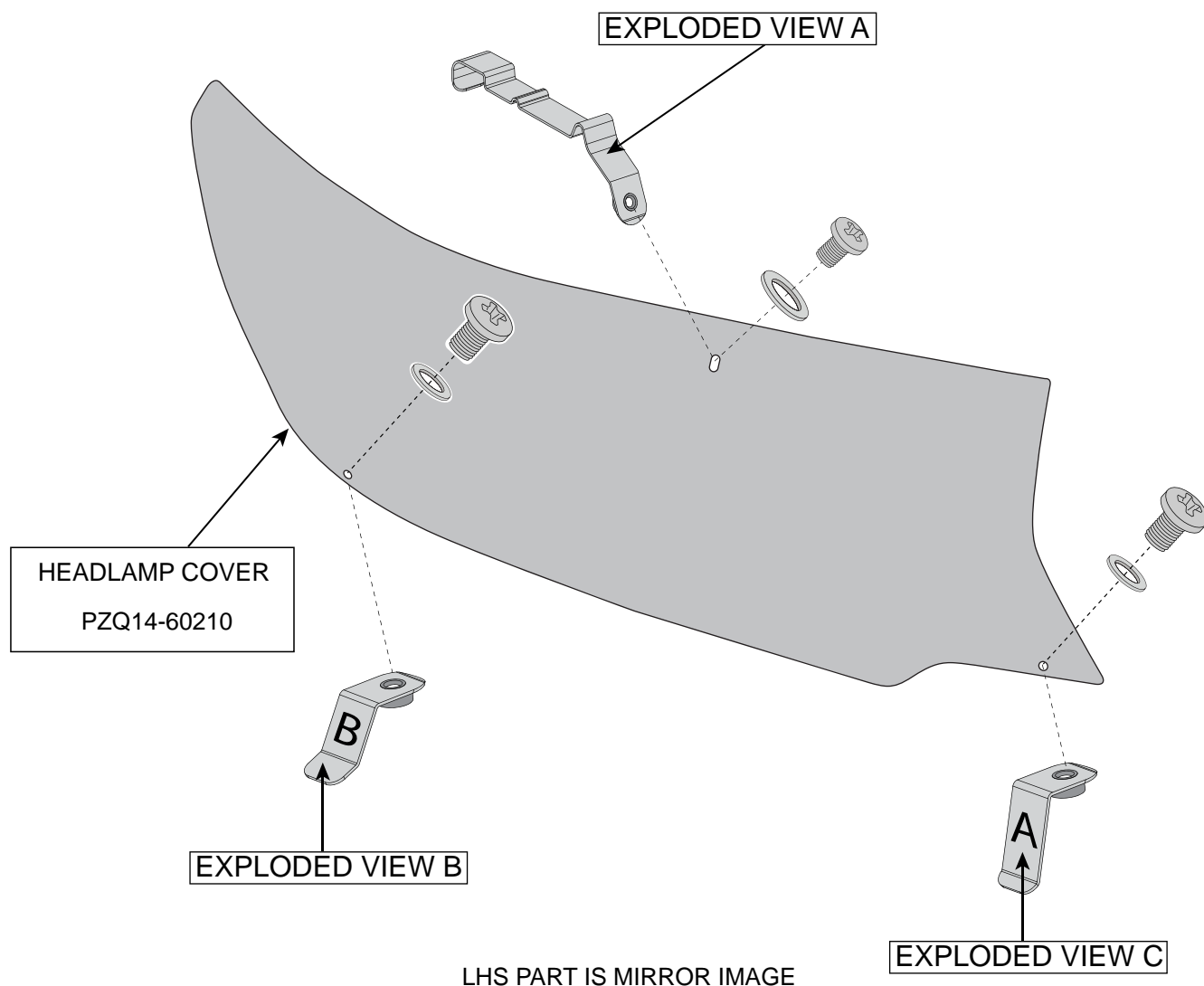
Do not use abrasive,
spirit or solvent
based cleaners.

Item	Component Name	Qty	Part number
1	Headlamp Covers Set	1	PZQ14-60210
2	Top Metal Clip	2	PZQ14-6021A
	Bottom Metal Clip Inner	2	
	Bottom Metal Clip Outer	2	
	Washer	6	
	Screw	6	
	Anti-Abrasive Tape	6	
	Alcohol Wipe	1	
	Fitting Instruction Flyer	1	

Item	Qty		Item	Qty	
A	2	Top Metal Clip	E	6	Screw
B	2	Bottom Metal Clip Inner	F	6	Anti-Abrasive Tape
C	2	Bottom Metal Clip Outer	G	1	Alcohol Wipe
D	6	Washer	H	1	Fitting Instruction Flyer



FITTING KIT
PZQ14-6021A



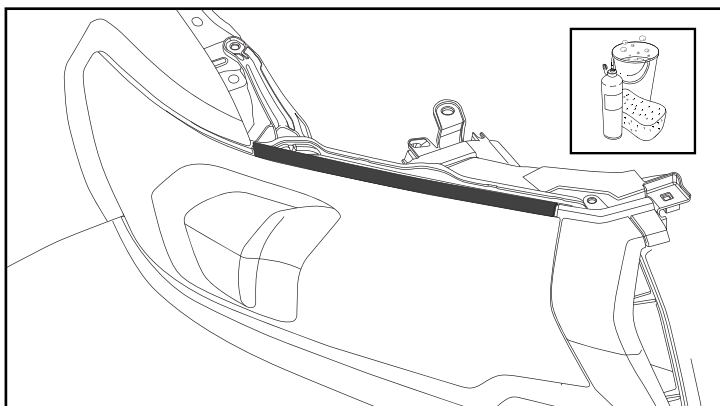


Diagram #: 1

1. Read installation instructions thoroughly before commencing installation. Open the bonnet and thoroughly clean and dry headlamps and surrounding areas.
See Dia #1.

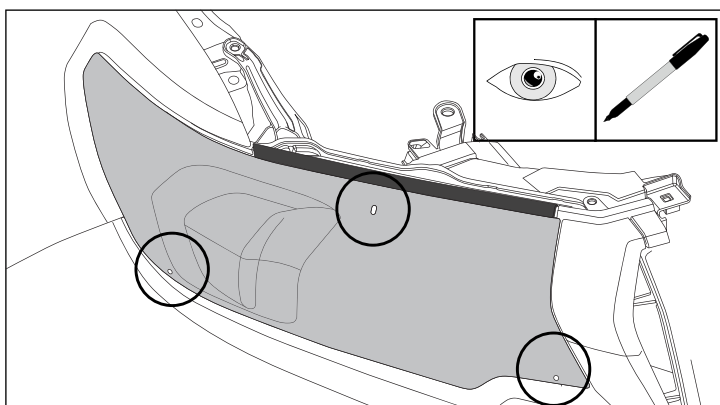


Diagram #: 2

2. Trial fit the Headlamp Cover centrally on the headlamp.

Note the slots at the top of the Headlamp Cover and mark these locations onto the headlamp assembly.

Note the holes at the bottom of the Headlamp Cover and mark these locations onto the bumper directly below the holes.

See Dia #2.

Note: Use a Non-Permanent Marker.

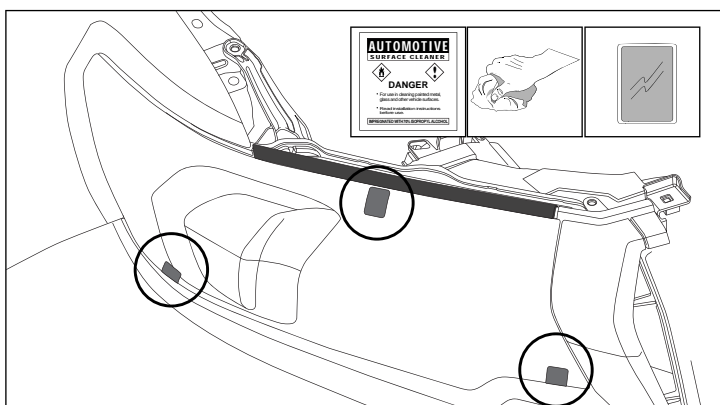


Diagram #: 3

3. At the previously noted and marked locations, clean the headlamp lens with the alcohol wipe provided. Remove any residue with a clean dry cloth.

Fit the Headlamp Cover centrally on the headlamp, holding it approximately 1-2cm off the headlamp surface.

Adhere the anti-abrasive tapes provided to all slot and hole positions. Approximately two thirds of the anti-abrasive tape should be on the headlight surface.

See Dia #3.

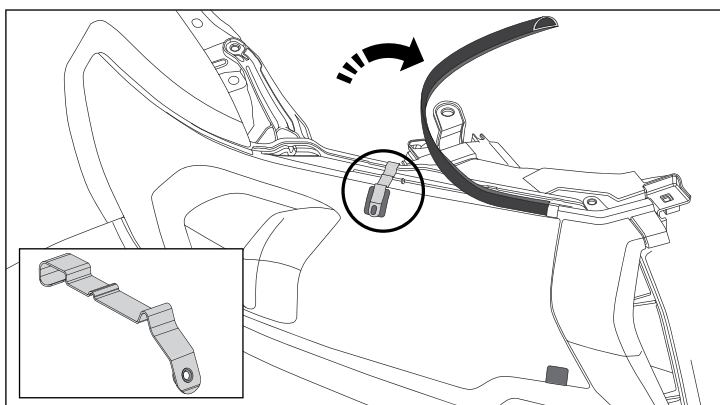


Diagram #: 4

4. Carefully peel back the rubber extrusion past the noted top metal clip location. Do not fully remove the rubber extrusion.

At the previously noted and marked top slot position, fit the metal clip to the top of the headlamp.

Ensure that the metal clip is located on the anti-abrasive tape and not on the headlamp lens.

See Dia #4.

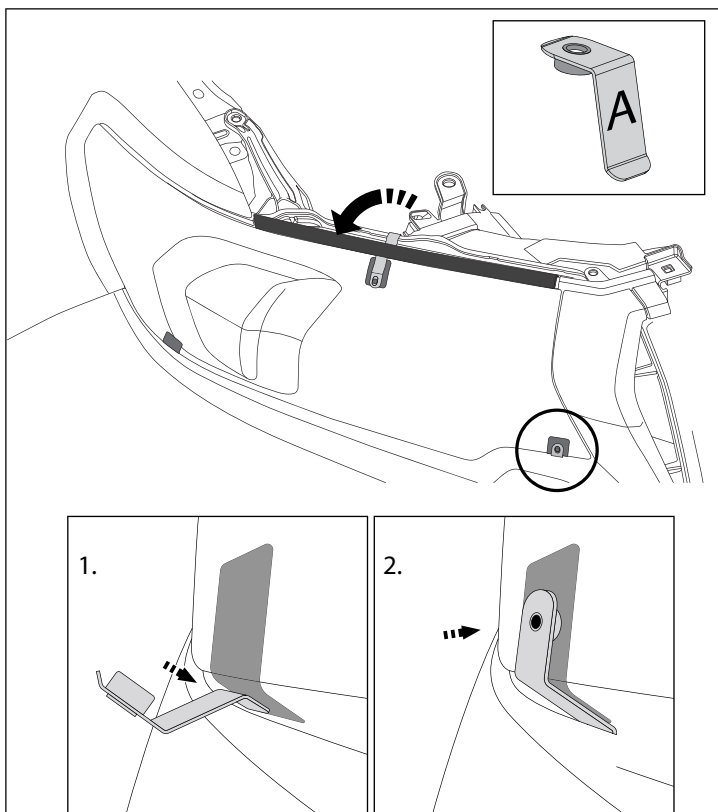


Diagram #: 5

5. Reposition the rubber extrusion over the top metal clips.

At the previously noted position, fit the Bottom Metal Inner Clip "A" between the bumper and headlight assembly.

Ensure that the metal clip is located on the anti-abrasive tape and not on the headlight lens.

See Dia #5.

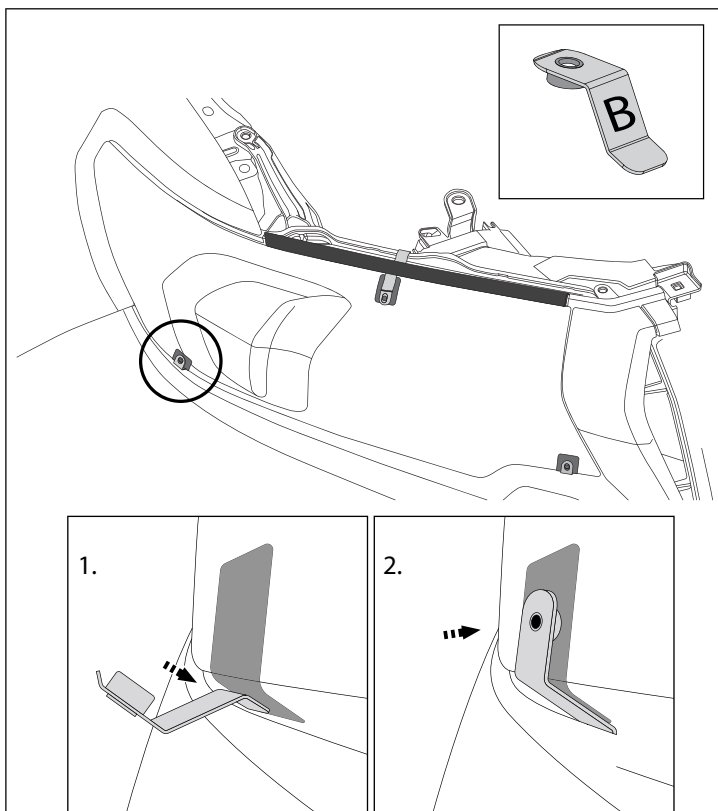


Diagram #: 6

6. At the previously noted position, fit the Bottom Metal Outer Clip "B" between the bumper and headlight assembly.

Ensure that the metal clip is located on the anti-abrasive tape and not on the headlight lens.

See Dia #6.

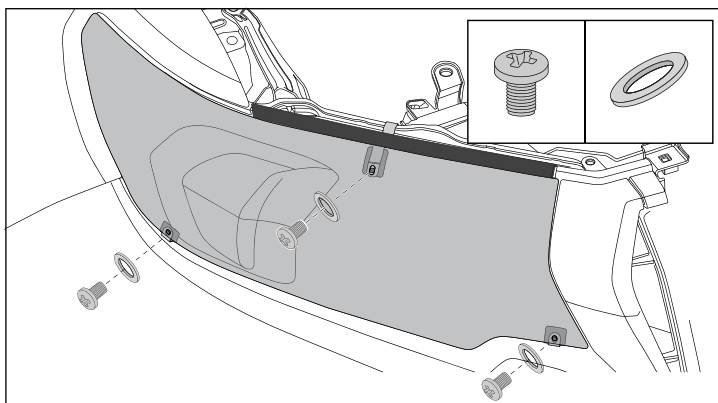


Diagram #: 7

7. Loosely secure the Headlamp Cover to the two bottom metal clips and top metal clip with the screws and washers provided.
See Dia #7.

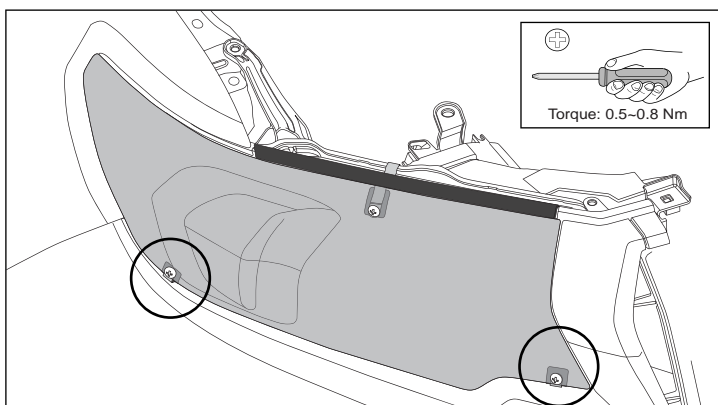


Diagram #: 8

8. Tighten the two bottom metal clip screws to the specified torque setting.
See Dia #8.

Note: Ensure torque setting 0.5~0.8Nm is used.

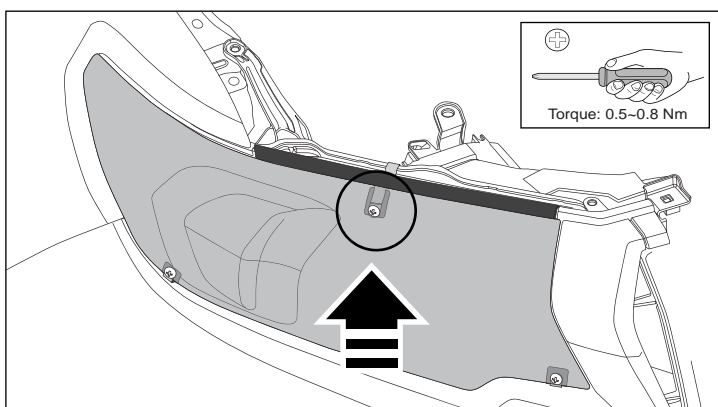


Diagram #: 9

9. Tighten the top metal clip screw to the specified torque setting, while applying upwards pressure to the Headlamp Cover.
See Dia #9.

Note: Ensure torque setting 0.5~0.8Nm is used.

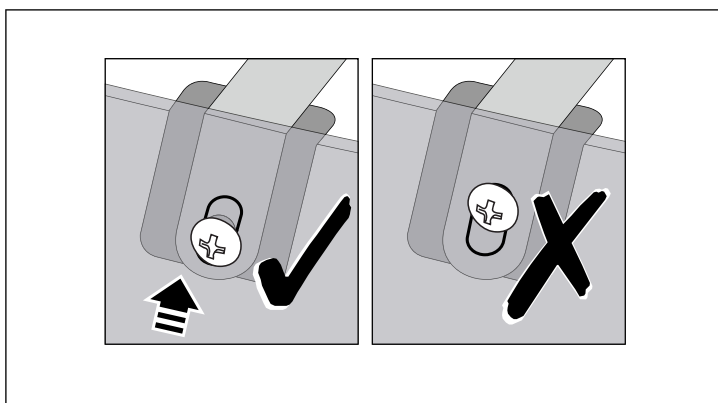


Diagram #: 10

10. Ensure the top screw is as close to the bottom of the vertical Headlight Protector slot as possible.
See Dia #10.

IMPORTANT: Conduct final inspection, ensuring all screws are tightened, and clips are correctly installed and not touching the headlamp surface.

TO REMOVE : Remove screws and washers, then remove Headlamp Cover from the Headlamp Assembly.