

Fitting Instructions – Z6236

Honda Civic 10th Gen 2016-2021

Rear Lower Control Arm Inner Bushing



Page 1 -

Note, this instruction sheet should be used in conjunction with a workshop manual and proper safety procedures followed.

- Place the vehicle securely on a hoist or jack stands;
- Remove the rear lower control arm;
- Remove OE rubber bush from the arm either using a press and press tools or by cutting the steel shell out (if cutting be careful not to damage the arm and clean up any damage that is done to the bore of the arm with sandpaper).

Note: When removing the OE bushing from the arm ensure that the two faces of the arm are supported using a 'C' piece or similar as seen below (to prevent squeezing arm).

'C' piece used to support the arm while pressing.



- Press in new bush using a press, ensuring that the 'C' piece or similar is used to support the arm. The bush should be pressed until the edge of the shell is flush with the outer face of the arm as shown;

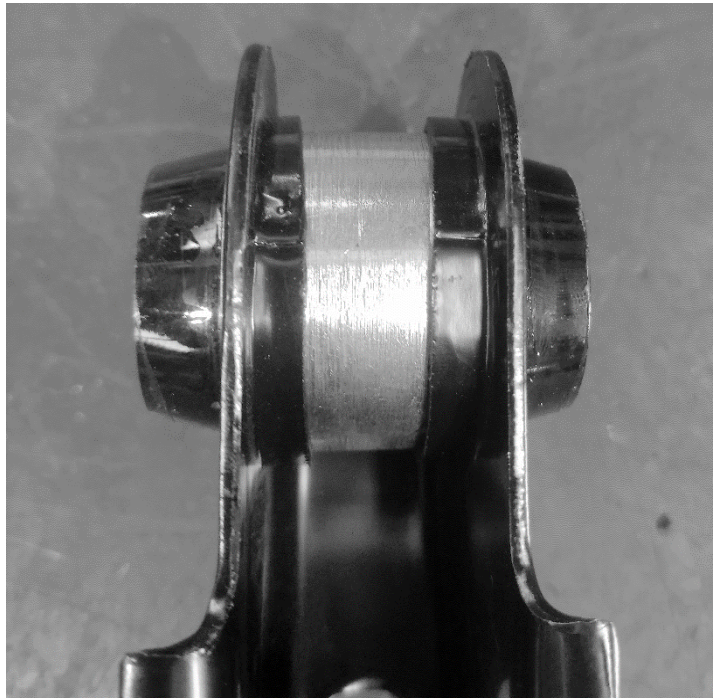
Fitting Instructions – Z6236

Honda Civic 10th Gen 2016-2021

Rear Lower Control Arm Inner Bushing



Page 2 -



- **Grease the bore of the bush and the exterior of the crush tube using the provided grease;**
- Push the crush tube into the bush until the face of the crush tube is flush with the face of the bush;
- The control arm can now be re-installed;
- Wheel alignment after install is recommended.
- Re-check all bolts after 500kms