

Fitting Instructions

Dodge Ram 2009-Onwards

Front Upper Control Arm Bushing

KIT CONTENTS		
PART No.	DESCRIPTION	QTY
20151Z	Front Upper Control Arm Bush	4
F0270	22.20x14.3x49 TUBE	4

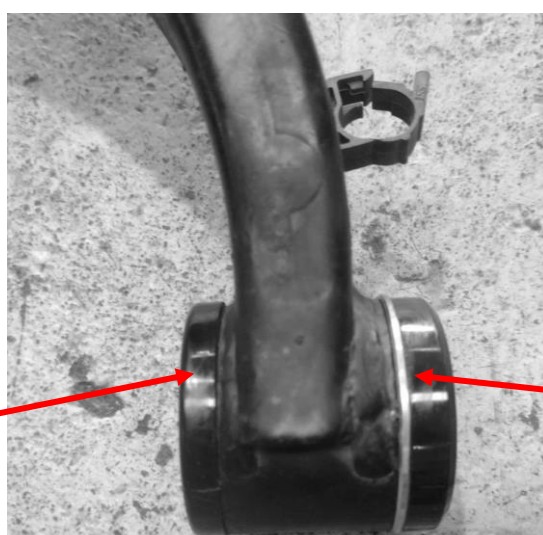
Note, this instruction sheet should be used in conjunction with a workshop manual and proper safety procedures followed.

- Place the vehicle securely on a hoist or jack stands
- Remove the upper control arm from vehicle
- Remove OE rubber bushes from the arm either using a press and press tools or by cutting the steel shell out (if cutting be careful not to damage the arm and clean up any damage that is done to the bore of the arm with sandpaper)
- Press in new bushes in the direction shown using a press, ensuring that they are pressed in until the underside of the flange and the outer face of the arm are touching as shown below.



Direction of bush install

Direction of bush install



Grease this face before installing to aid install

Steel bushing flange touching the arm

Fitting Instructions

Dodge Ram 2009-Onwards

Front Upper Control Arm Bushing

- Grease the bore of the bush and the exterior of the crush tube before inserting the crush tube into the bush
- Push the crush tube into the bush either by hand or with a press and wipe off excess grease
- The control arm can now be re-installed and torqued to manufacturers specifications
- Wheel alignment after install is recommended