

Fitting Instructions

Dodge Ram 2009-Onwards

Front Lower Control Arm Bushing

KIT CONTENTS		
PART No.	DESCRIPTION	QTY
20152Z	Front Lower Control Arm Bush	4
F9387	27x18.2x94.5 Crush Tube	4
SPF2711WB	Steel Knurled Washer	4
SPF2835W	Steel Knurled Washer	4

Note, this instruction sheet should be used in conjunction with a workshop manual and proper safety procedures followed.

- Place the vehicle securely on a hoist or jack stands
- Either remove the front lower control arm from the vehicle or remove the camber pins from the inner bushes and leave the ball joint attached to the knuckle and then allow the arm to swing down from the chassis ears
- Note the steel flange of the bushes protrude from the arm different lengths for the front and rear bushes, as shown below.



Front position bush

Rear position bush

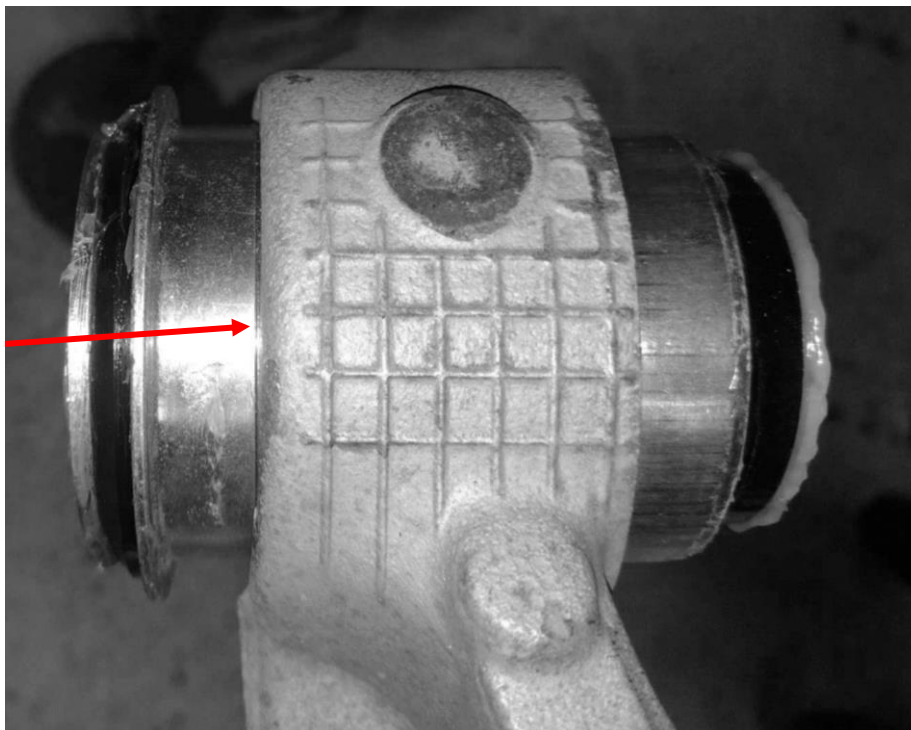
- Remove OE rubber bushes from the arm either using a press and press tools or by cutting the steel shell out (if cutting be careful not to damage the arm and clean up any damage that is done to the bore of the arm with sandpaper)
- **Note: The new bushes use the same bush for both the front and rear position. However the distance that the bush needs to be pressed into the arm is different and this difference corresponds to the two grooves on each bush.**
- **Note: crush tubes and washers come pre-assembled with grease**
- The **front position** bush needs to be pressed into the arm until the **first groove** under the head of the bush is aligned with the outer face of the arm. This is shown below.

Fitting Instructions

Dodge Ram 2009-Onwards

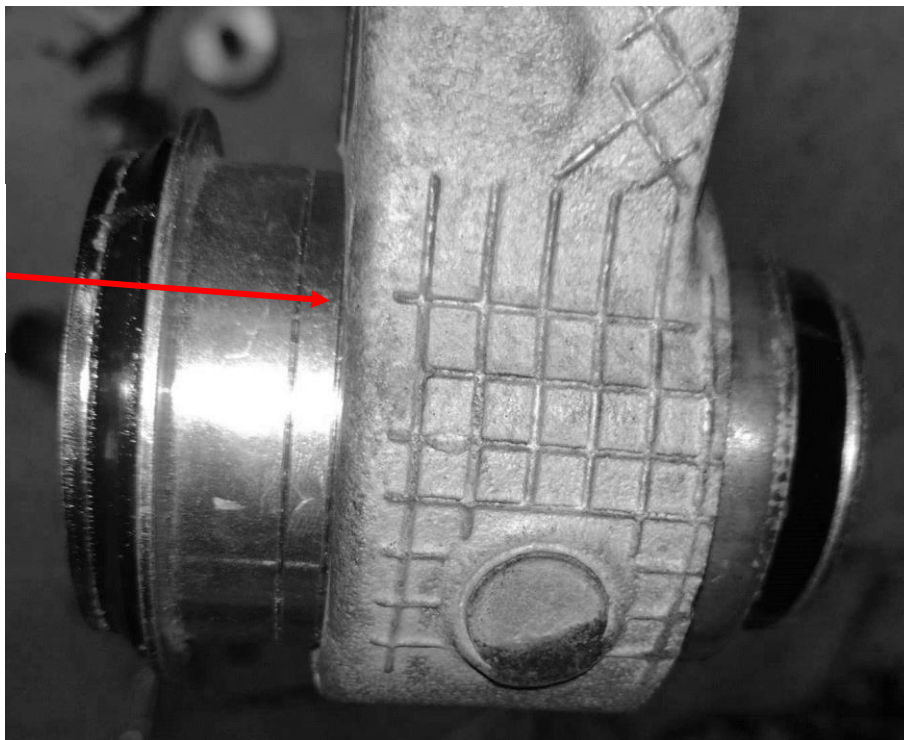
Front Lower Control Arm Bushing

Front Position Bush –
pressed in until first
groove aligns with
the face of the arm



- The **rear position** bush needs to be pressed in until the **second groove** under the head of the bush is aligned with the outer face of the arm. This is shown below

Rear Position Bush –
pressed in until second
groove aligns with the
face of the arm

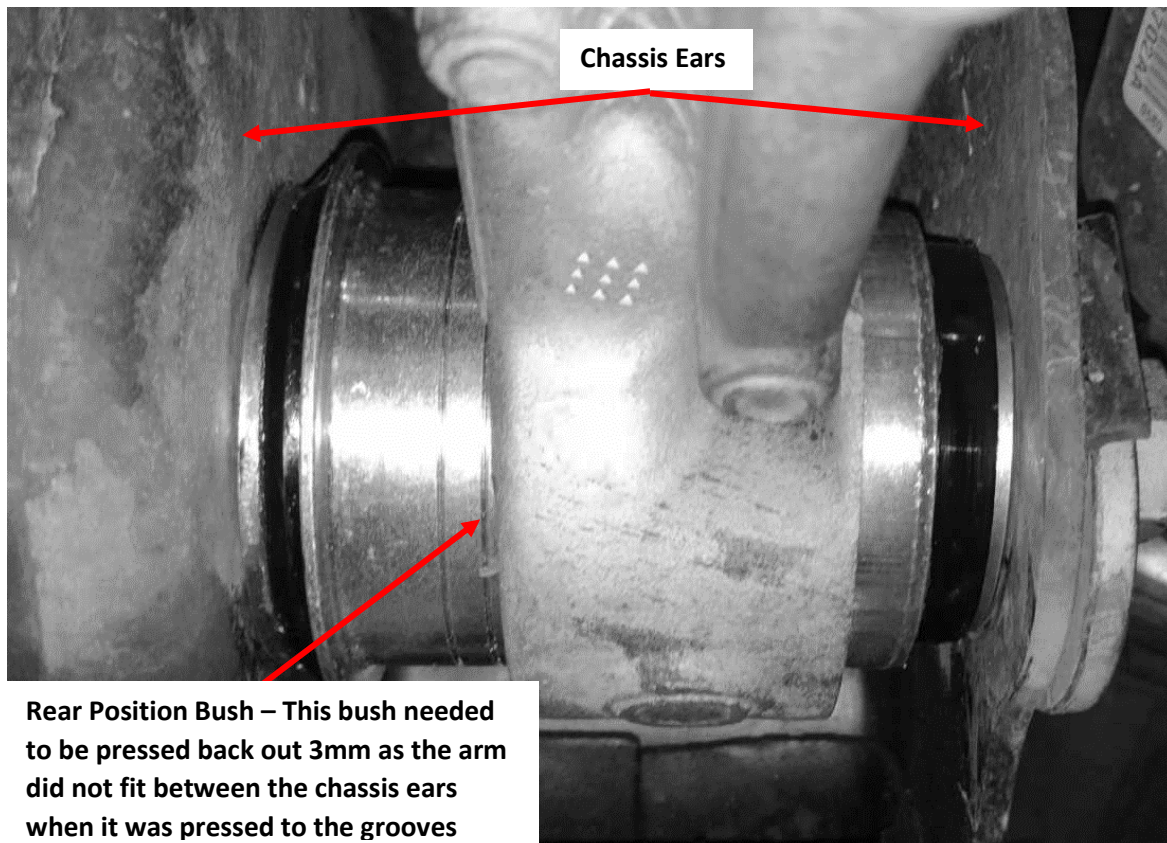


Fitting Instructions

Dodge Ram 2009-Onwards

Front Lower Control Arm Bushing

- **Note:** these marks are for reference only as there can be variance in the chassis dimensions which can make the arm not fit between the chassis ears when the bushes are pressed in to these marks. If this occurs just press the bushes in or out the distance needed to make them fit the chassis ears. An example of this is shown below



- **These bushes come pre greased with the washers and tube assembled so no grease is needed to be applied**
- The control arm can now be re-installed and torqued to manufacturers specifications
- Wheel alignment after install is recommended