

# Fitting Instructions #5496IS

Mazda CX7

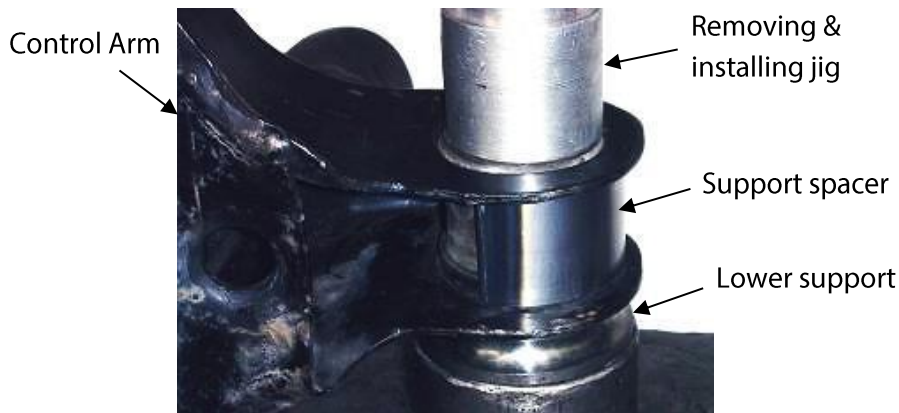
## Control Arm Lower Inner Kit



- Remove the control arm from the vehicle;
- With the use of a hydraulic press, suitable pressing jigs and support spacers, press out the original bushings;

**Note:** Support spacers are required to avoid distorting the outer housing on the control arms. The photo below shows the support spacer between the housing ends. Please measure the external housing diameters before removing the original bush, because the external diameter of one side of the housing is bigger than the other. To avoid stretching the housing, please push out the original bush from the smaller inside diameter towards the bigger one.

- Install new bushing into the housing. The support spacers are required to avoid distorting the outer housing on the control arms, when installing the new bushings\*;
- Use the grease supplied and lubricate the inside of the new bushing and the outside of the steel crush tube;
- Insert the new steel crush tube into the new bushing;
- Install the control arms back into the vehicle;
- Tighten all mounting bolts and nuts to the manufacturer's specifications.



### \*Important:

To install the new SuperPro '2324' bush, please make sure the smaller shell diameter of the bush is placed on the side of the bigger external diameter of the housing. Then push the bush until the shell is in the same level as the outer surface of the housing.

The installation should result with the smaller shell diameter of the new bush fitted in the smaller external diameter of the housing (same for the bigger diameters).

