

Fitting Instructions #5689IS

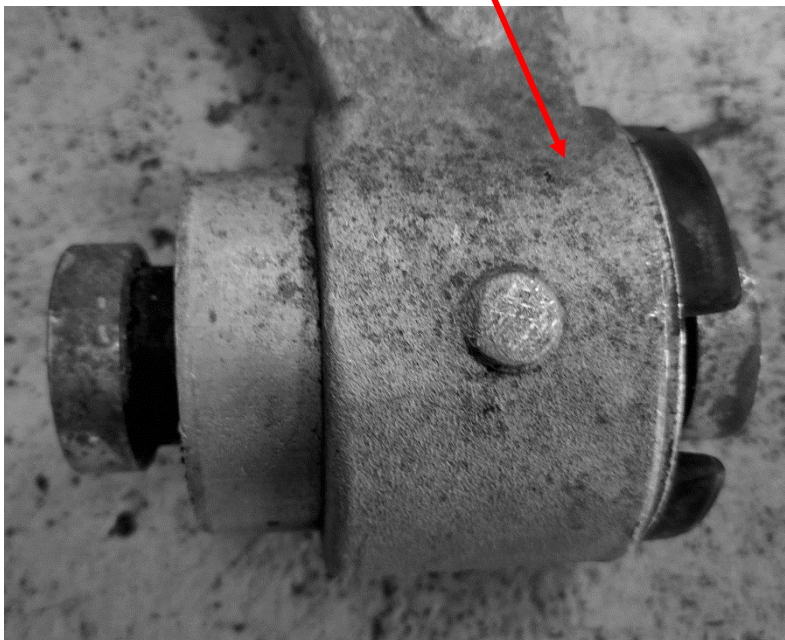
Ford F-150 2004-2008

Front Lower Control Arm (FLCA) Bush Kit

Note, this instruction sheet should be used in conjunction with a workshop manual and proper safety procedures followed.

- Place the vehicle securely on a hoist or jack stands
- Remove the lower control arm
- Note the steel flange of the bush sits flush with the arm.

Steel flange of the bush sits flush with the outer face of the arm



- Remove OE rubber bushes from the arm either using a press and press tools or by cutting the steel shell out (if cutting be careful not to damage the arm and clean up any damage that is done to the bore of the arm with sandpaper)
- Press in new bushes in the same direction that the OE bushes were, ensuring that they are pressed in flush until the steel flange contacts the arm.



Steel flange of bushing sits flush with the face of the arm



- **These bushes come pre greased so no grease is needed to be applied**
- The control arm can now be re-installed
- Wheel alignment after install is recommended