

Installation Guide

Front Upper Inner – Insert Kit

Suits: Mitsubishi Triton ML-MN 4WD 3/2006-2015.

Mitsubishi Pajero NM-NX 2000-on.

(Always refer to the current catalogue for complete application listings).

N.B. This instruction sheet should be used in conjunction with the workshop manual.

- 1:** Raise the front vehicle and place on chassis stands under the chassis rail or sub frame.
- 2:** Remove the front wheels.
- 3:** For Triton models – jack under the lower control arm until the bump stop on the underside of the upper control arm is no longer in contact with the chassis. Support the lower control arm in this position.

Note: For Pajero models – there is no need to jack the lower arm but supporting the hub unit will aid in re-assembly.

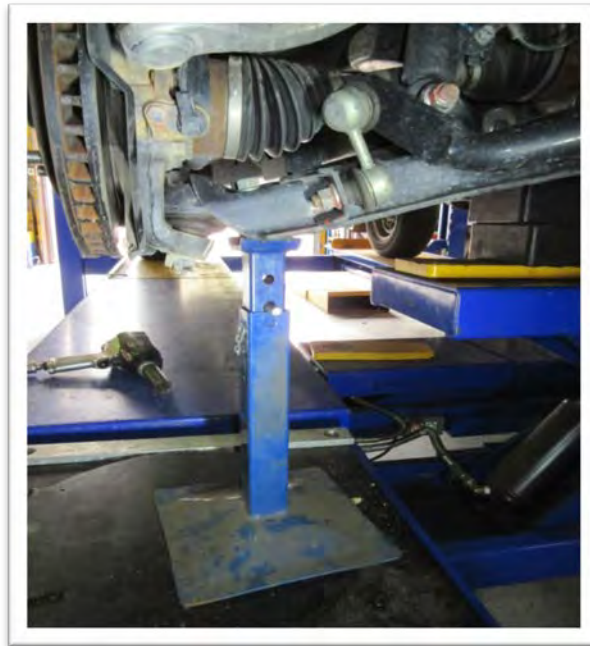


Image 1

4: For Triton models – Remove the ball joint retaining bolt retaining clip (1 per each outer mount bolt) refer image 2 and 3



Image 2



Image 3

5: With the retaining clips removed, remove 3 x ball joint retaining bolts.

6: For Triton models – Remove the 2 x ABS wire locating bracket mounting bolts as per image 4

For Pajero models – the ABS wire can be unclipped easily to move out of the way.



Image 4

7: Remove upper inner retaining bolts from the front and rear mount positions as per image 5

Note: These bolts are to be re-used.

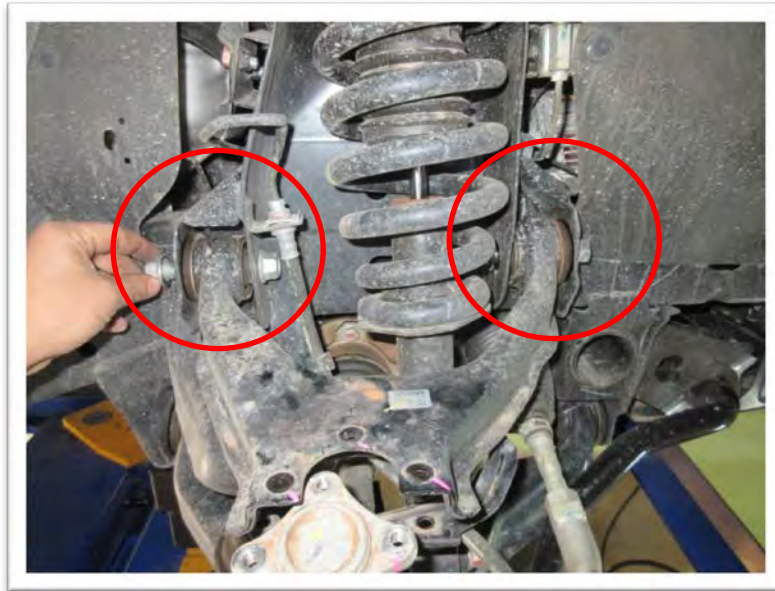


Image 5

8: Install supplied insert bushings into original bushings as displayed below.

- Insert 1 x 68629 into front of front eyelet as per Image 6
- Insert 1 x 68630 into rear of front eyelet as per image 7

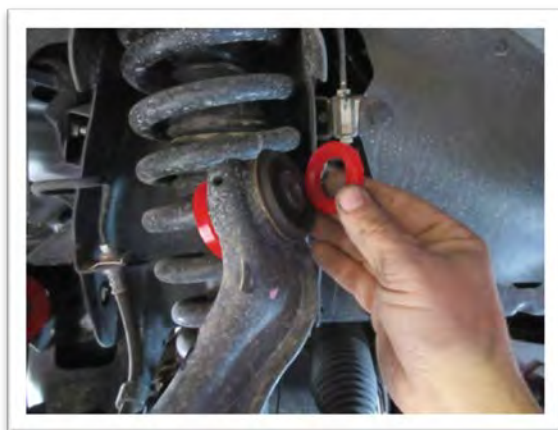


Image 6 = 68629 bushing

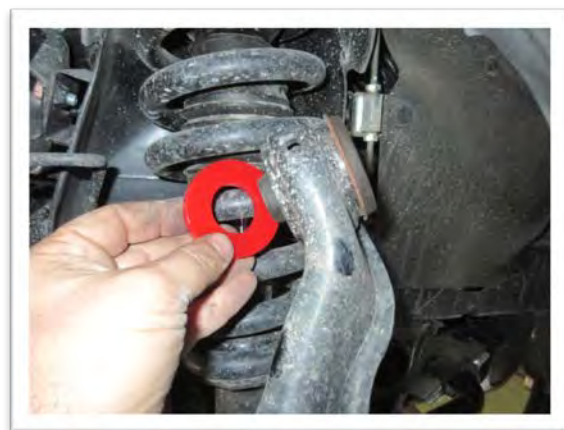


Image 7 = 68630 bushing

FRONT OF VEHICLE ----->

- Insert 1 x 68629 into rear of rear eyelet as per Image 8
- Insert 1 x 68630 into front of rear eyelet as per image 9



Image 8 = 68629 bushing

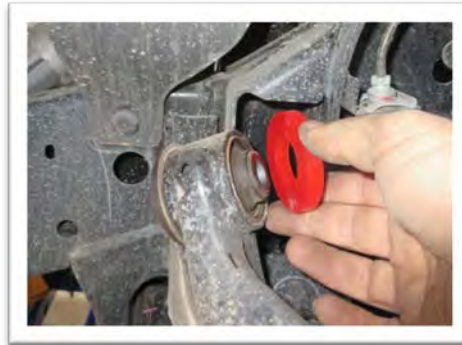


Image 9 = 68630 bushing

FRONT OF VEHICLE ----->

9: Re-install front upper control arm with insert kit fitted as per above instructions.

Note: When re-installing the upper control arm mounting bolts do not tension at this stage.

10: For Triton models - Re-install ABS wire mounting bolts and brackets.

Note: For Pajero models – re-install ABS wire into retaining clips.

11: Re-install the 3 x upper ball joint mounting bolts

Note: We recommend the use of a liquid thread lock product when re-installing these bolts.

Note: For Triton models – Re-install outer ball joint mount bolt locking clips.

Repeat procedure for other side of vehicle

12: Re-fit road wheels

13: Lower vehicle and normalise suspension.

14: Retention 4 x upper inner mounting bolts to manufacturers specifications.

We recommend a wheel alignment be carried out after installing these components.

N.B. It is recommended that a licensed workshop or tradesperson carry out the above procedure and that workshop manual and relevant safety procedures are followed in addition to the above.