

INSTALLATION INSTRUCTIONS



03034RW TO SUIT LAND ROVER FREELANDER 2 Jan 2013-ON
ENSURE INSTRUCTIONS ARE UNDERSTOOD BEFORE INSTALLATION.

Rating Braked 2000 Kg

Rating Unbraked 750 Kg

Max Static Ball Load 250 Kg

Warning:

1. Do not, drill, cut, weld or otherwise modify the towbar.
2. If you are using electric welding on a motor vehicle, **always** check that the vehicle is not equipped with electronic engine or instrument management equipment. Failure to do so could **destroy** any onboard computers. If in doubt, check with the vehicle's manufacturer.

1. **General:** Ensure all hardware items have been included refer to assembly diagram.
2. It is recommended that the instructions are read through and completely understood before making any attempt to fit this product.
3. Be wary of any changes to vehicle designs or other accessories that may conflict with the installation of this product.
4. Before drilling ensure that the area is clear of fuel, electrical & other components.
5. All holes drilled into the body panels shall have all burrs & swarf removed then coated with a suitable rust preventative paint.
6. The high tensile fasteners supplied with this product were used to achieve the specified rating. If replacement is required ensure that fasteners of the same rating & quality are used. Contact an authorised **Hayman Reese** dealer if further information is required.
7. Ensure that all hardware is fastened to torque list below check fasteners on regular basis.
8. Towbar load rating sticker provided with this product shall be conspicuously located on inside rear end of the driver's door. **(See diagram below).**
9. Hayman Reese recommends that you check your tow ball to ensure that it complies with the Australian standards **AS 4177.2**.
10. **PLEASE NOTE:** It is advised to remove your lug or tbn when not actually towing so as to produce a clear view of the vehicles registration plate if obscured, and to also provide maximum available departure angle.

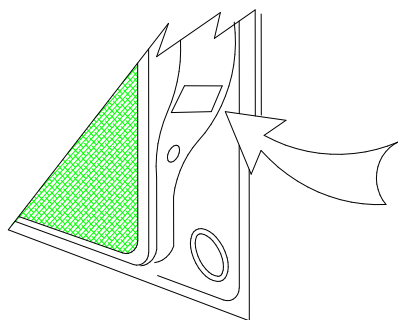
Tow bar Maintenance and Care.

Hayman Reese recommends that bolt torque's, as listed below, are routinely and regularly inspected and checked for correct tension. Replace any worn or defective parts.

We recommended to remove Tow Ball Mounts (TBM's, tongues or lugs) when not being used for any considerable length of time.

So as to avoid injury, when not towing it is suggested that the tongue, Pull Pin and R-clip are removed then stored in a safe, clean and dry place, away from excessive moisture.

Hitch Pull Pins and spring "R" clips are regularly checked for proper installation. Replace any worn or defective parts.



Place load rating sticker
inside driver's door here

RECOMMENDED ASSEMBLY TORQUE LISTING

<u>Diameter</u>	<u>Grade 8.8 Bolt</u>
M6	9.5 Nm
M8	21.7 Nm
M10	43.4 Nm
M12	77.3 Nm
M16	189.8 Nm

FOR TOWING PURPOSES ONLY

For towing capacity details please refer to vehicle owner's manual or to the manufacturer. Overloading can void your warranties.

INSTALLATION INSTRUCTIONS



3034RW TO SUIT LAND ROVER FREELANDER 2 Jan 2013-ON ENSURE INSTRUCTIONS ARE UNDERSTOOD BEFORE INSTALLATION.

11. Remove bumper bar
 - a. Remove taillight assembly via 2 screws on both sides, refer figure 1.
 - b. Remove 2 screws under the mud guard on both sides.
 - c. Remove 1 torx screws in front of mud guard on both sides then remove mud guards.
 - d. Remove 2 torx screws behind plastic wheel guard on both sides, refer figure 2.
 - e. Remove 2 torx screws on top of the bumper, refer figure 3.
 - f. Remove plastic step to gain access to 5 plastic scrivenets to be removed, refer figure 4.
 - g. Remove 4 screws under the bumper bar.
 - h. Disconnect any wiring attached to bumper bar before removing rear bumper.
 - i. Remove plastic guards via 4 screws (to be reused).
12. Remove impact beam
 - a. Remove 4 nuts from each side of rear impact beam, refer figure 5.
 - b. Remove M14 set screws attaching towing lug, the screws to be refit to opposite side.
 - c. Remove impact beam.
14. Fitment the towbar via
 - a. Position towbar against chassis rails, for driver side place tow bar between towing hook plate and chassis rail.
 - b. For driver side use two M14x110 bolts, spring washer, flat washer provided to secure towing hook plate and tow bar to the vehicle, refer figure 6
 - c. Attach passenger side tow bar using M14 set screw previously from towing lug attachment.
 - d. Torque all bolts to recommend torque refers page1.
 - d. Reinstall plastic guards and impact beam.
15. Bumper cut detail
 - a. Establish centre line of bumper bar then mark out as detailed in figure 7
 - b. Cut section of bumper with modified hacksaw or similar device.
 - c. Cut 75mm wide and 85mm high from bottom of the bumper.
 - d. Reinstall the bumper in reverse order in step 11.



Figs 1 remove
taillight assembly.



Figs 2 remove torx
screws

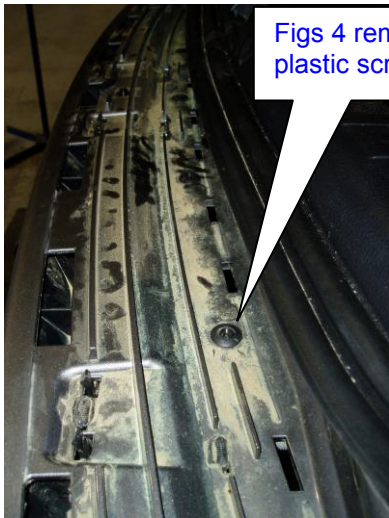


Figs 3 remove
torx screws

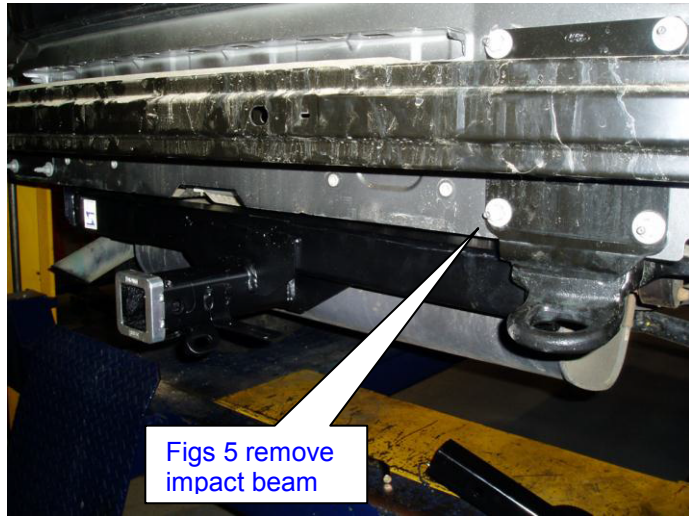
INSTALLATION INSTRUCTIONS



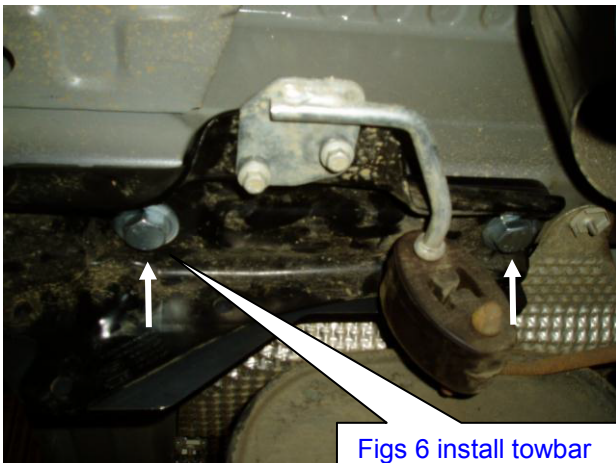
3034RW TO SUIT LAND ROVER FREELANDER 2 Jan 2013-ON
ENSURE INSTRUCTIONS ARE UNDERSTOOD BEFORE INSTALLATION.



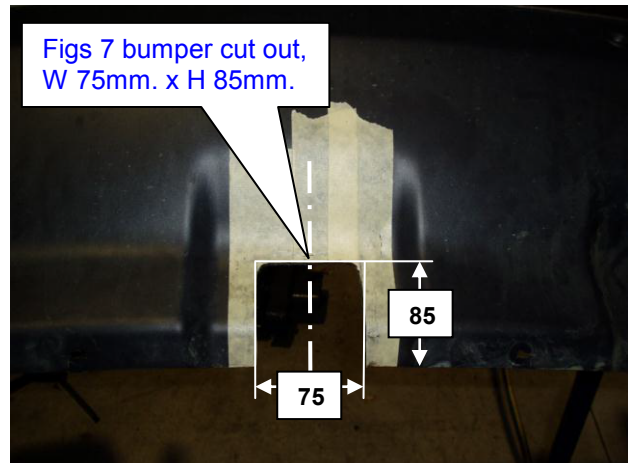
Figs 4 remove 5 plastic scrivenets



Figs 5 remove impact beam



Figs 6 install towbar between towing hook and chassis rail.



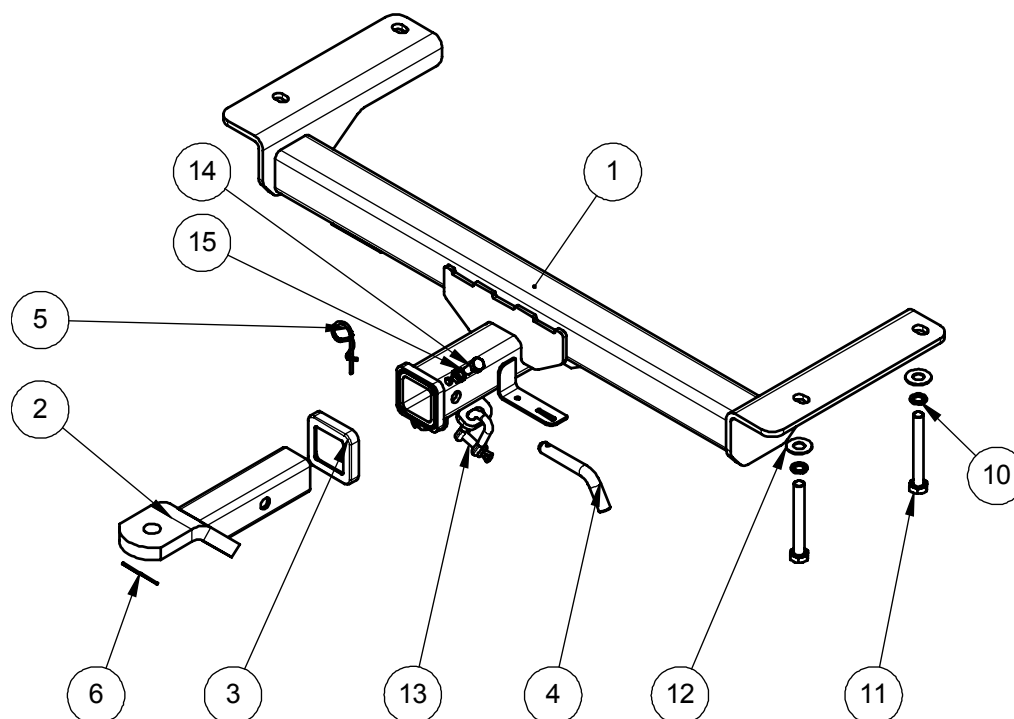
Figs 7 bumper cut out, W 75mm. x H 85mm.



INSTALLATION INSTRUCTIONS



3034RW TO SUIT LAND ROVER FREELANDER 2 Jan 2013-ON
ENSURE INSTRUCTIONS ARE UNDERSTOOD BEFORE INSTALLATION.



QTY.	DESCRIPTION	ITEM NO.
1	WELDED ASSEMBLY	1
1	T.B.MOUNT	2
1	HITCH BOX COLLAR COVER	3
1	PULL PIN	4
1	SPRING COTTER PIN	5
1	H.R.STICKER	6
1	FITTING INSTRUCTION	7
1	DOOR RATING STICKER	8
1	H.R.LIFETIME WARRANTY	9
2	CSM14 SPRING WASHER	10
2	M14 X 110 BOLT STD THREAD	11
2	M14 FLAT WASHER	12
2	'D' SHACKLE	13
1	M10 x 25 1.5P BOLT	14
1	NUT M10 x 1.5P	15

HAYMAN REESE
PART No: 100977-WL
Land Rover Freelander 2

INSTALLATION INSTRUCTIONS

PLEASE ENSURE THAT INSTRUCTIONS ARE UNDERSTOOD PRIOR TO FITMENT

Wiring Loom Installation Instructions

Land Rover Freelander 2

Part No: 100977-WL

Tail Harness Length Required: 1800mm

Wiring Loom Installation Time: Approx. 15 minutes

Issue Date 15-07-13

Page 1

Part No: 100977-WL

Hayman Reese (Cequent)
PO Box 4050, Dandenong South VIC 3164
Phone 1800 812 017 Email info@haymanreese.com.au

www.haymanreese.com.au



HAYMAN REESE
PART No: 100977-WL
Land Rover Freelander 2

INSTALLATION INSTRUCTIONS

PLEASE ENSURE THAT INSTRUCTIONS ARE UNDERSTOOD PRIOR TO FITMENT

1. At the rear of the vehicle, remove the floor carpet (1).



2. Remove the luggage compartment LHS tool tray (1).



3. On the sheet metal floor of the LHS rear quarter panel beside the factory ECU, remove and discard the existing smaller grommet and drill out the grommet hole to Ø30mm (1).
4. File down any rough or sharp edges and spray with rust inhibitor.



Issue Date 15-07-13

Page 2

Part No: 100977-WL

Hayman Reese (Cequent)
PO Box 4050, Dandenong South VIC 3164
Phone 1800 812 017 Email info@haymanreese.com.au

www.haymanreese.com.au



HAYMAN REESE
PART No: 100977-WL
Land Rover Freelander 2

INSTALLATION INSTRUCTIONS

PLEASE ENSURE THAT INSTRUCTIONS ARE UNDERSTOOD PRIOR TO FITMENT

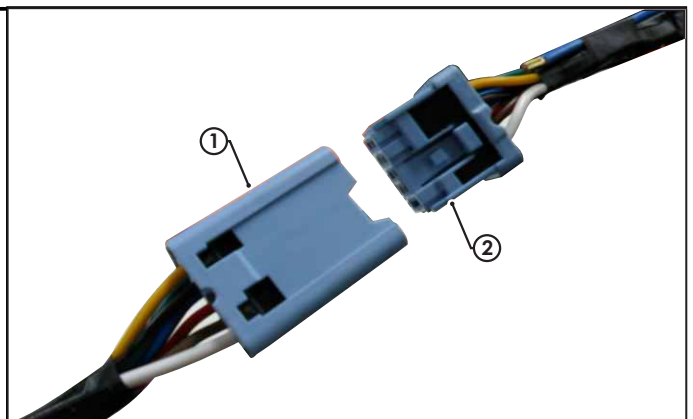
5. Connect the trailer patch harness 13-way connector (1) to the vehicle breakout connector (2).



6. Mount the trailer socket (1) to the tow bar mounting bracket using M4 fasteners (not supplied).
7. Route the tail harness (tail length 1800mm) (2) across the tow bar towards the LHS of the vehicle and up through the previously drilled out hole.
8. Ensure the tail harness grommet is seated correctly and secured in place using a cable tie (not supplied).



9. Connect the tail harness (tail length 1800mm) 8-way connector (1) to the trailer patch mating 8-way connector (2).



Issue Date 15-07-13

Page 3

Part No: 100977-WL

Hayman Reese (Cequent)
PO Box 4050, Dandenong South VIC 3164
Phone 1800 812 017 Email info@haymanreese.com.au

www.haymanreese.com.au



HAYMAN REESE
PART No: 100977-WL
Land Rover Freelander 2

PLEASE ENSURE THAT INSTRUCTIONS ARE UNDERSTOOD PRIOR TO FITMENT

- | | |
|--|--|
| <ul style="list-style-type: none">10. Test the trailer patch function using a light board or multimeter.11. Secure all harnesses using cable ties (not supplied).12. Re-fit all removed parts and secure all fasteners, ensuring there are no squeaks or rattles.13. Place the instructions in the glove box compartment after fitment. | |
|--|--|

Issue Date 15-07-13

Page 4

Part No: 100977-WL

Hayman Reese (Cequent)
PO Box 4050, Dandenong South VIC 3164
Phone 1800 812 017 Email info@haymanreese.com.au

www.haymanreese.com.au

