

HAYMAN REESE
PART No: 02982RW
VOLVO V40 03/2013 – ON

INSTALLATION INSTRUCTIONS

PLEASE ENSURE THAT ALL INSTRUCTIONS ARE UNDERSTOOD PRIOR TO FITMENT
PLACE THESE INSTRUCTIONS IN THE VEHICLE'S GLOVEBOX AFTER INSTALLATION IS COMPLETED



Installation Time: Approx **90** Mins

Towbar Installation Instructions

Towbar capacity

VOLVO V40 03/2013 - ON

Part Number **02982RW**

Max Towing Braked

1500 kg

Max Static Ball Load

75 kg

Hayman Reese (Cequent)
PO Box 4050, Dandenong South VIC 3164
Phone 1800 812 017 Email info@haymanreese.com.au

INSTALLATION INSTRUCTIONS

PLEASE ENSURE THAT ALL INSTRUCTIONS ARE UNDERSTOOD PRIOR TO FITMENT
PLACE THESE INSTRUCTIONS IN THE VEHICLES'S GLOVEBOX AFTER INSTALLATION IS COMPLETED

Warning:

1. Do not, drill, cut, weld or otherwise modify the towbar.
2. If you are using electric welding on a motor vehicle, **always** check that the vehicle is not equipped with electronic engine or instrument management equipment. Failure to do so could **destroy** any onboard computers. If in doubt, check with the vehicle's manufacturer.

General:

1. Ensure all hardware items have been included refer to assembly diagram.
2. It is recommended that the instructions are read through and completely understood before making any attempt to fit this product.
3. Be wary of any changes to vehicle designs or other accessories that may conflict with the installation of this product.
4. Before drilling ensure that the area is clear of fuel, electrical & other components.
5. All holes drilled into the body panels shall have all burrs & swarf removed then coated with a suitable rust preventative paint.
6. The high tensile fasteners supplied with this product were used to achieve the specified rating. If replacement is required ensure that fasteners of the same rating & quality are used. Contact an authorised **Hayman Reese** dealer if further information is required.
7. Ensure that all hardware is fastened to torque list below check fasteners on regular basis.
8. Towbar load rating sticker provided with this product shall be conspicuously located on inside rear end of the driver's door. **(See diagram below).**
9. Hayman Reese recommends that you check your tow ball to ensure that it complies with the Australian standards **AS 4177.2**.
10. **PLEASE NOTE:** It is advised to remove your lug or tbn when not actually towing so as to produce a clear view of the vehicles registration plate if obscured, and to also provide maximum available departure angle.
11. Pull Pin must be fit in down position.

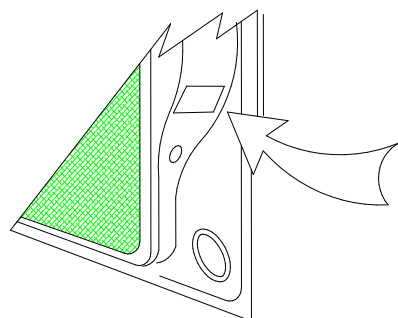
Tow bar Maintenance and Care.

Hayman Reese recommends that bolt torque's, as listed below, are routinely and regularly inspected and checked for correct tension. Replace any worn or defective parts.

We recommended to remove Tow Ball Mounts (TBM's, tongues or lugs) when not being used for any considerable length of time.

So as to avoid injury, when not towing it is suggested that the tongue, Pull Pin and R-clip are removed then stored in a safe, clean and dry place, away from excessive moisture.

Hitch Pull Pins and spring "R" clips are regularly checked for proper installation. Replace any worn or defective parts.



Place load rating sticker
inside driver's door here

RECOMMENDED ASSEMBLY TORQUE LISTING

Diameter Grade 8.8 Bolt

M6	9.5 Nm
M8	21.7 Nm
M10	43.4 Nm
M12	77.3 Nm
M14	146 Nm
M16	189.8 Nm

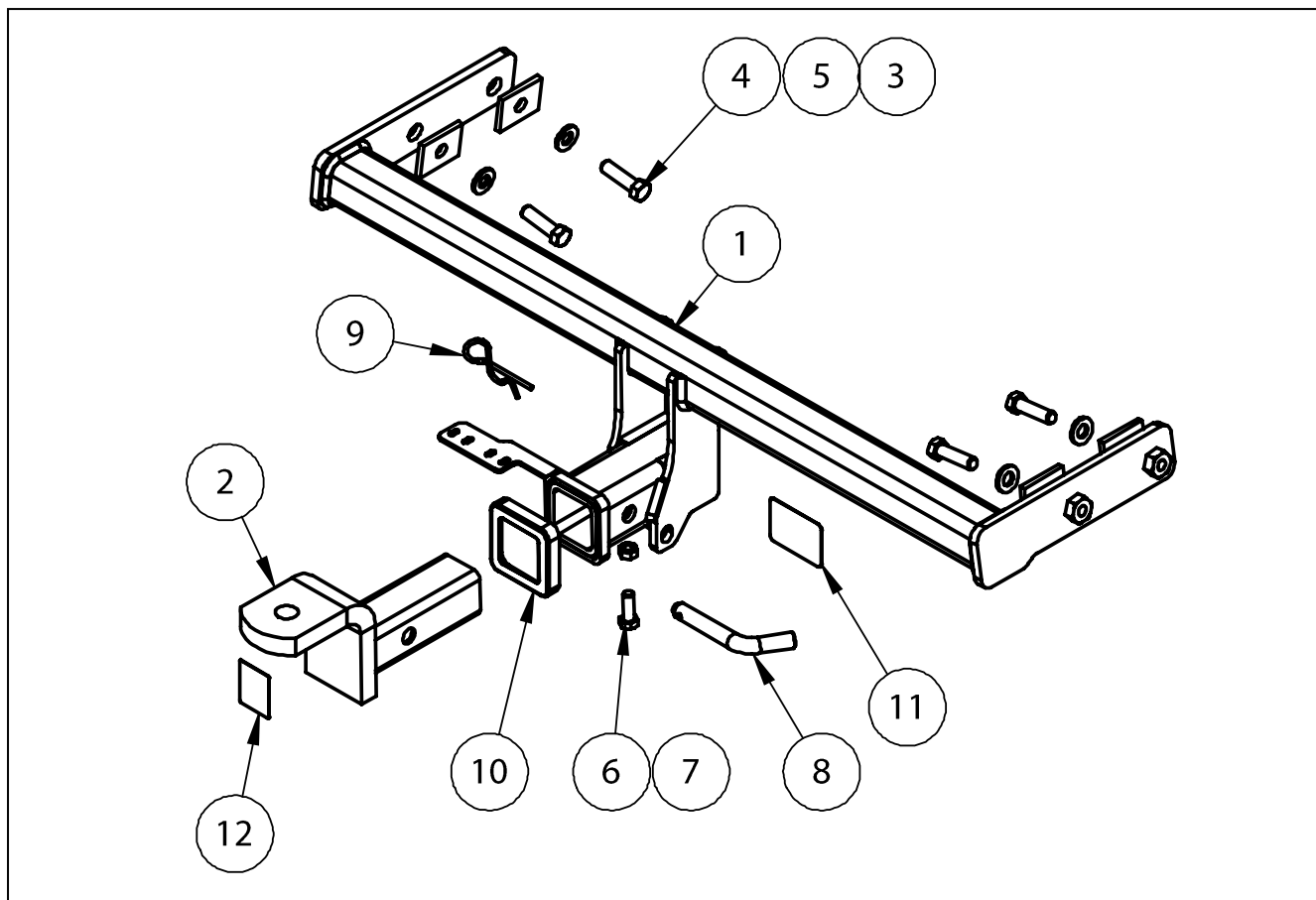
FOR TOWING PURPOSES ONLY

For towing capacity details please refer to vehicle owner's manual or to the manufacturer. Overloading can void your warranties.

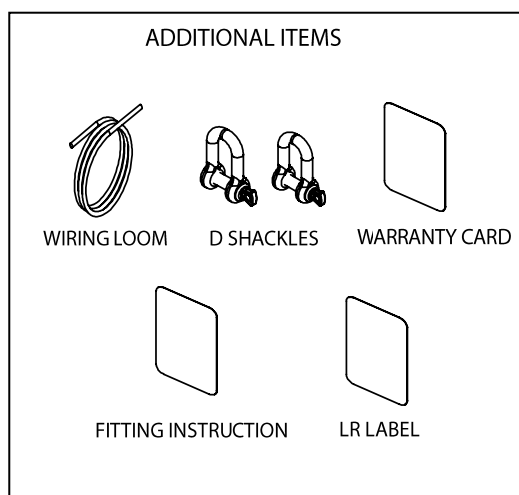
HAYMAN REESE
PART No: **02982RW**
VOLVO V40 03/2013 - ON

INSTALLATION INSTRUCTIONS

PLEASE ENSURE THAT ALL INSTRUCTIONS ARE UNDERSTOOD PRIOR TO FITMENT
PLACE THESE INSTRUCTIONS IN THE VEHICLE'S GLOVEBOX AFTER INSTALLATION IS COMPLETED



QTY	DESCRIPTION	ITEM NO.
1	WELDED ASSEMBLY	1
1	CLASS 4 TBM	2
4	FITTING PLATE 53x40x6mm	3
4	M12x1.75x45 HEX BOLT	4
4	WASHER FLAT 1/2"x1 1/8"x1/8"	5
1	SET SCREW HEX HD M10x10x30x1.5P	6
1	HEX NUT M10x1.5	7
1	PULL PIN	8
1	R CLIP	9
1	HITCH BOX COLLAR COVER	10
1	ACRYLIC COMPLIANCE PLATE	11
1	H.R STICKER	12

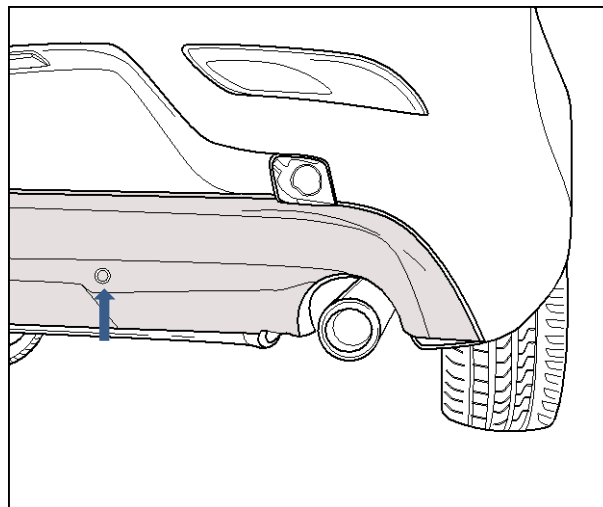


INSTALLATION INSTRUCTIONS

PLEASE ENSURE THAT ALL INSTRUCTIONS ARE UNDERSTOOD PRIOR TO FITMENT
PLACE THESE INSTRUCTIONS IN THE VEHICLE'S GLOVEBOX AFTER INSTALLATION IS COMPLETED

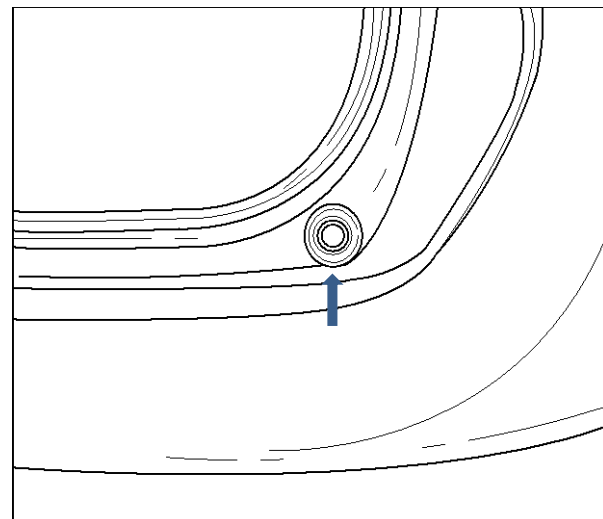
1. Remove both Torx Screws on lower Bumper from RHS..

RHS Torx Screw seen, Repeat for LHS.



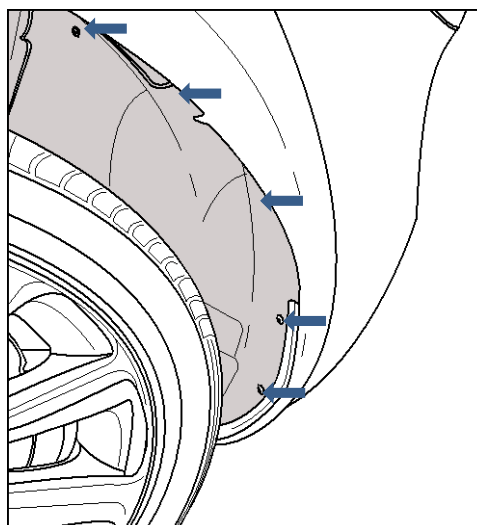
2. Remove RHS Rubber Stop found under Tailgate.

Repeat for LHS.



3. Remove all 5x Torx Screws from both Wheel Wells, LHS seen in image.

Repeat for RHS.



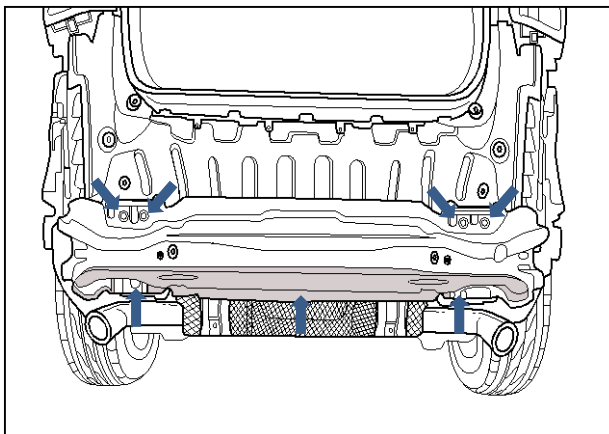
INSTALLATION INSTRUCTIONS

PLEASE ENSURE THAT ALL INSTRUCTIONS ARE UNDERSTOOD PRIOR TO FITMENT
PLACE THESE INSTRUCTIONS IN THE VEHICLE'S GLOVEBOX AFTER INSTALLATION IS COMPLETED

4. Carefully remove Bumper by disconnecting catches and place in a safe area.

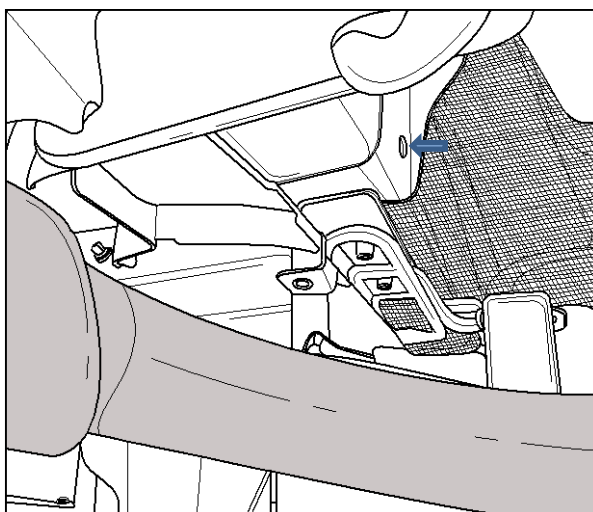
Disconnect Wiring Connector under right hand side Tail lamp

5. Remove 3x Bolts on each side of the Rear Impact Beam and detach, placing beam to the side.



6. Lower Exhaust system by removing Bolts closest to the rear of vehicle.

Bend Heat shield away from Chassis Rail, allowing for access to mounting holes on Chassis Rail.

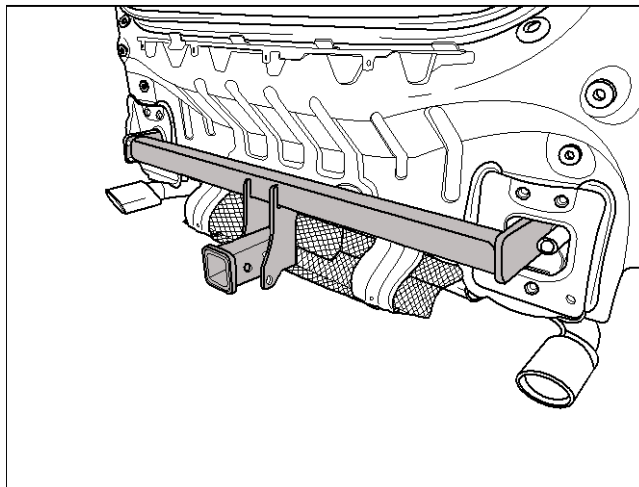


INSTALLATION INSTRUCTIONS

PLEASE ENSURE THAT ALL INSTRUCTIONS ARE UNDERSTOOD PRIOR TO FITMENT
PLACE THESE INSTRUCTIONS IN THE VEHICLES'S GLOVEBOX AFTER INSTALLATION IS COMPLETED

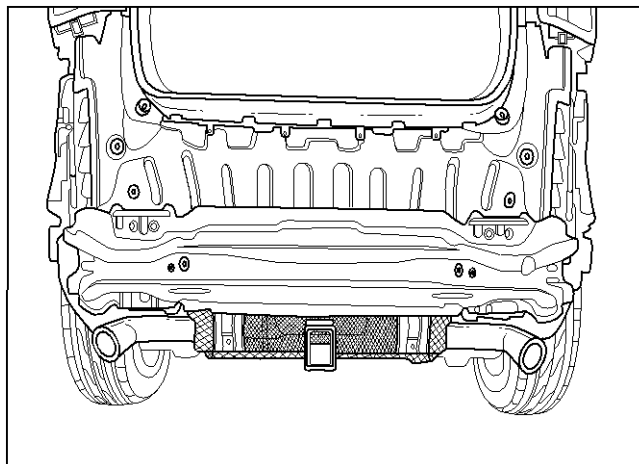
7. Offer Towbar to vehicle, loosely secure the Towbar. Then torque all Bolts to 127Nm

Adjust Heat Shield to its original position.



8. Lift exhaust and refit Bolts to secure exhaust.

Refit Rear Impact Beam on top of Towbar.

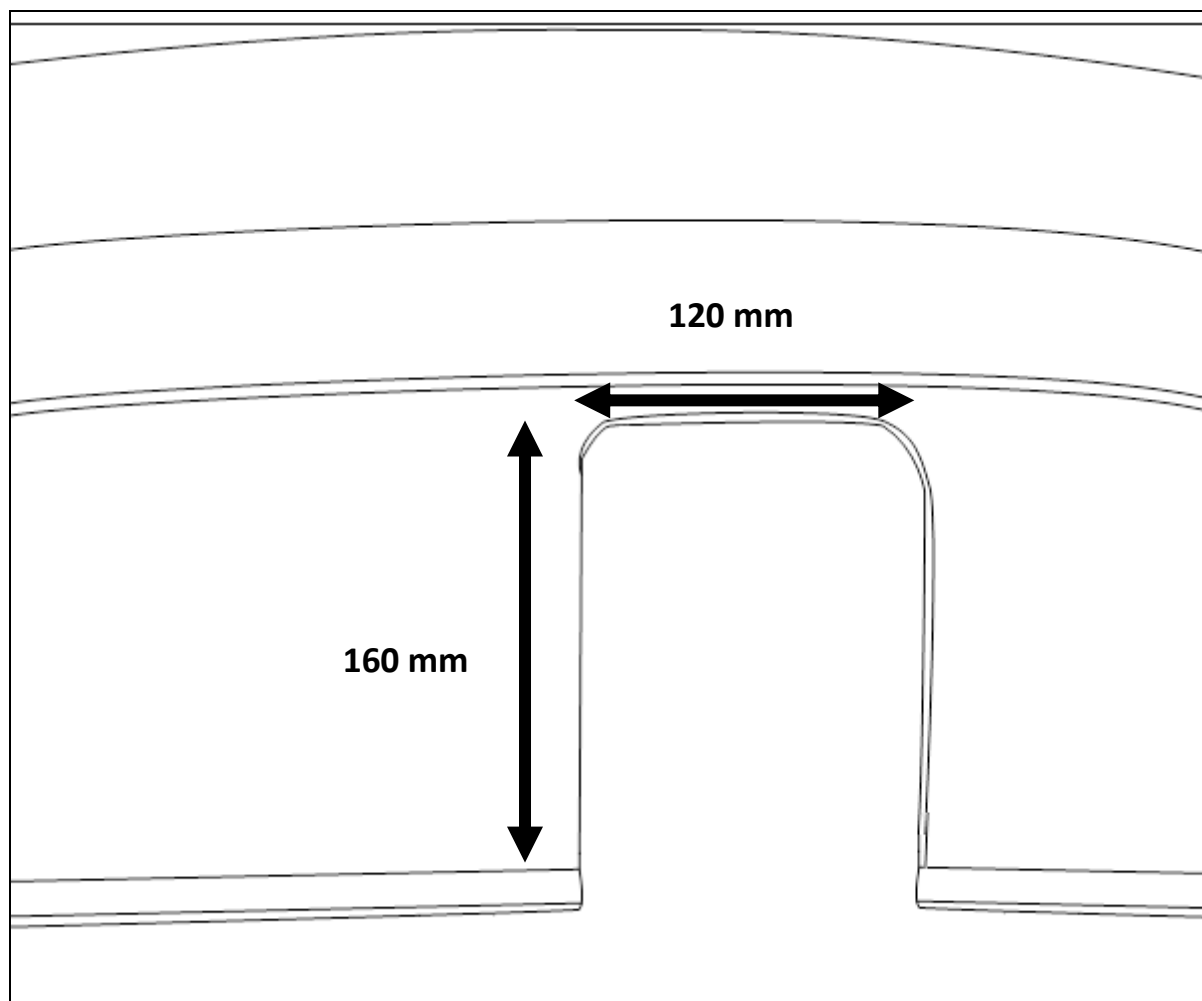


9. Cut Bumper as shown on Page 7.

10. Re attach Bumper referring to Steps 1-4 in reverse.

INSTALLATION INSTRUCTIONS

PLEASE ENSURE THAT ALL INSTRUCTIONS ARE UNDERSTOOD PRIOR TO FITMENT
PLACE THESE INSTRUCTIONS IN THE VEHICLE'S GLOVEBOX AFTER INSTALLATION IS COMPLETED



BUMPER CUT
(NOT TO SCALE)

HAYMAN REESE
PART No: 100880-WL
VOLVO V40

INSTALLATION INSTRUCTIONS

PLEASE ENSURE THAT INSTRUCTIONS ARE UNDERSTOOD PRIOR TO FITMENT

Wiring Loom Installation Instructions

VOLVO V40

Part No: 100880-WL
ECU Required: 04826

Tail Harness Length Required: 1200mm

Wiring Loom Installation Time: Approx. 30 minutes

Issue Date 19-12-12

Page 1

Part No: 100880-WL

Hayman Reese (Cequent)
PO Box 4050, Dandenong South VIC 3164
Phone 1800 812 017 Email info@haymanreese.com.au

www.haymanreese.com.au



HAYMAN REESE
PART No: 100880-WL
VOLVO V40

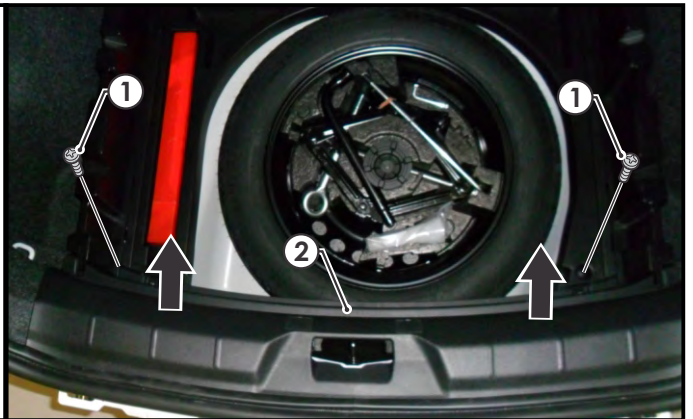
INSTALLATION INSTRUCTIONS

PLEASE ENSURE THAT INSTRUCTIONS ARE UNDERSTOOD PRIOR TO FITMENT

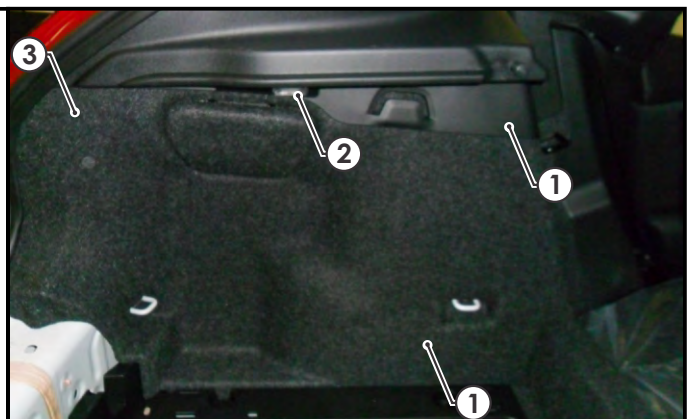
1. Remove the parcel shelf (1) and the carpet cover (2).



2. Remove the two screws (1) and pull the rear luggage compartment trim (2) in an upwards direction.



3. On the LHS of the luggage compartment, dislodge the upper plastic trim (1) and disconnect the 12v light connector (2).
4. Remove the LHS luggage compartment trim (3).



Issue Date 19-12-12

Page 2

Part No: 100880-WL

Hayman Reese (Cequent)
PO Box 4050, Dandenong South VIC 3164
Phone 1800 812 017 Email info@haymanreese.com.au

www.haymanreese.com.au



HAYMAN REESE
PART No: 100880-WL
VOLVO V40

INSTALLATION INSTRUCTIONS

PLEASE ENSURE THAT INSTRUCTIONS ARE UNDERSTOOD PRIOR TO FITMENT

5. On the LHS of the rear passenger seat, dislodge the plastic pillar trim (1).



6. Pull the latch (1) underneath the rear passenger seat.
7. Remove the rear passenger seat base (2).



8. Remove the LHS rear door trim (1).



Issue Date 19-12-12

Page 3

Part No: 100880-WL

Hayman Reese (Cequent)
PO Box 4050, Dandenong South VIC 3164
Phone 1800 812 017 Email info@haymanreese.com.au

www.haymanreese.com.au



HAYMAN REESE
PART No: 100880-WL
VOLVO V40

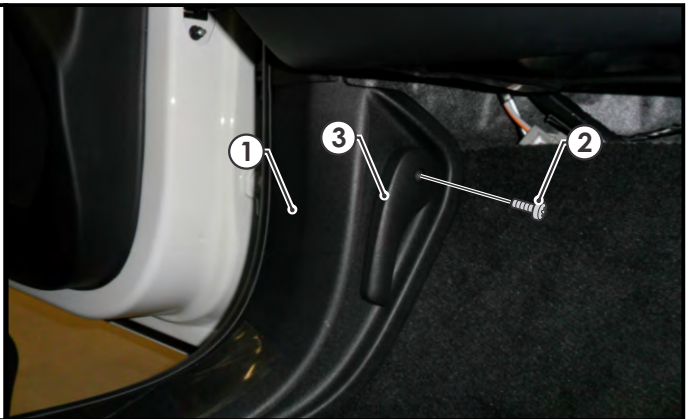
INSTALLATION INSTRUCTIONS

PLEASE ENSURE THAT INSTRUCTIONS ARE UNDERSTOOD PRIOR TO FITMENT

9. Remove the front passenger door sill trim (1).



10. On the LHS kick panel trim (1), remove the screw (2) and the bonnet lever (3).
11. Remove the LHS kick panel trim (1).



12. Remove the fuse panel cover (1) located under the glove box.



Issue Date 19-12-12

Page 4

Part No: 100880-WL

Hayman Reese (Cequent)
PO Box 4050, Dandenong South VIC 3164
Phone 1800 812 017 Email info@haymanreese.com.au

www.haymanreese.com.au



HAYMAN REESE
PART No: 100880-WL
VOLVO V40

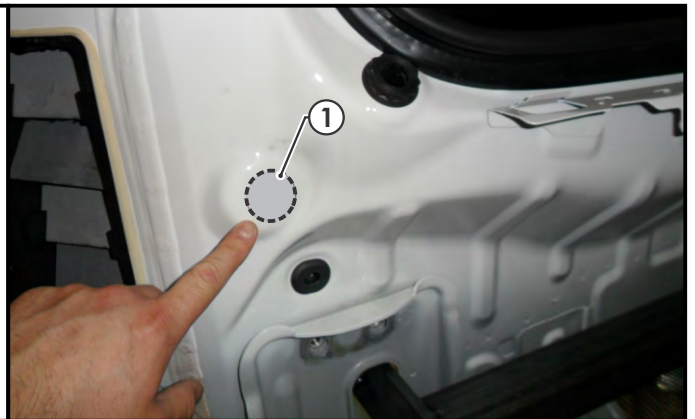
INSTALLATION INSTRUCTIONS

PLEASE ENSURE THAT INSTRUCTIONS ARE UNDERSTOOD PRIOR TO FITMENT

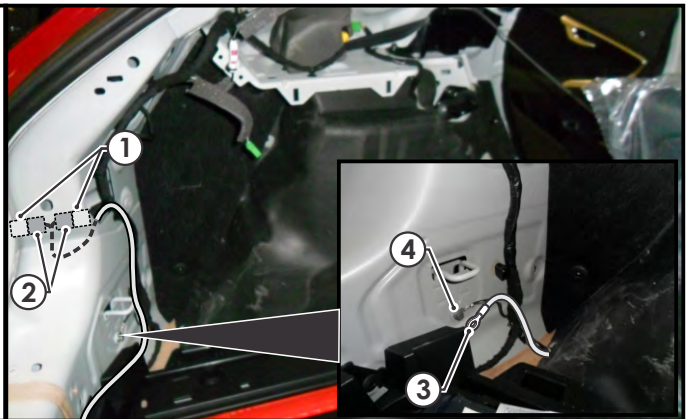
13. Remove the rear bumper fascia (1).



14. On the outside of the vehicle, next to the LHS air vent, drill a Ø30mm hole (1).
15. File any rough or sharp edges and spray on rust inhibitor.



16. In the LHS of the luggage compartment, disconnect the tail light assembly connectors (1) and connect the trailer patch connectors (2) (P/No: 100880-WL).
17. Connect the trailer patch ground ring terminal (3) to the vehicle grounding point (4).



Issue Date 19-12-12

Page 5

Part No: 100880-WL

Hayman Reese (Cequent)
PO Box 4050, Dandenong South VIC 3164
Phone 1800 812 017 Email info@haymanreese.com.au

www.haymanreese.com.au



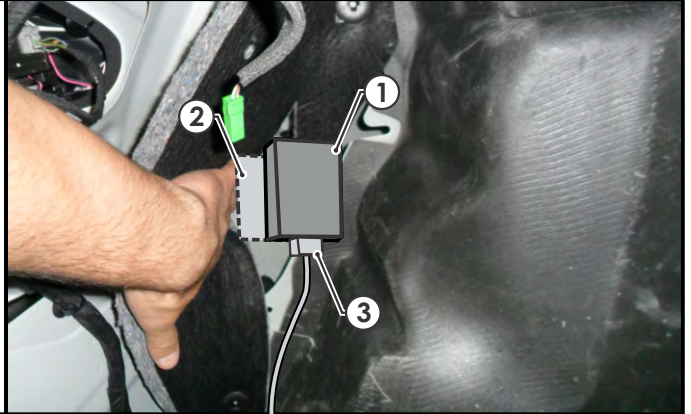
HAYMAN REESE
PART No: 100880-WL
VOLVO V40

INSTALLATION INSTRUCTIONS

PLEASE ENSURE THAT INSTRUCTIONS ARE UNDERSTOOD PRIOR TO FITMENT

18. Apply double sided tape to the ECU (04826) (1) and secure it to the vehicle sheet metal (2) on the LHS of the luggage compartment.
19. Connect the trailer patch 12-way connector (3) to the ECU (1).

Note: Ensure the ECU connector is facing downwards.



20. Route the trailer patch (1) along the rear trim towards the RHS.



21. In the RHS of the luggage compartment, disconnect the tail light assembly connectors (1) and connect the trailer patch connectors (2) (P/No: 100880-WL).



Issue Date 19-12-12

Page 6

Part No: 100880-WL

Hayman Reese (Cequent)
PO Box 4050, Dandenong South VIC 3164
Phone 1800 812 017 Email info@haymanreese.com.au

www.haymanreese.com.au



HAYMAN REESE
PART No: 100880-WL
VOLVO V40

INSTALLATION INSTRUCTIONS

PLEASE ENSURE THAT INSTRUCTIONS ARE UNDERSTOOD PRIOR TO FITMENT

22. On the LHS of the luggage compartment, route the 'ORANGE' power (1) towards the front of the vehicle, following the existing vehicle harness.



23. Continue routing the 'ORANGE' power wire (1) along the existing vehicle harness.



24. Continue routing the 'ORANGE' power wire (1) along the vehicle harness and up towards the fuse panel.



Issue Date 19-12-12

Page 7

Part No: 100880-WL

Hayman Reese (Cequent)
PO Box 4050, Dandenong South VIC 3164
Phone 1800 812 017 Email info@haymanreese.com.au

www.haymanreese.com.au

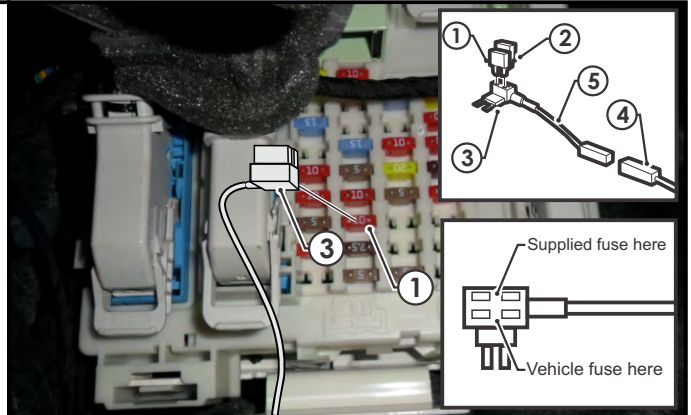


HAYMAN REESE
PART No: 100880-WL
VOLVO V40

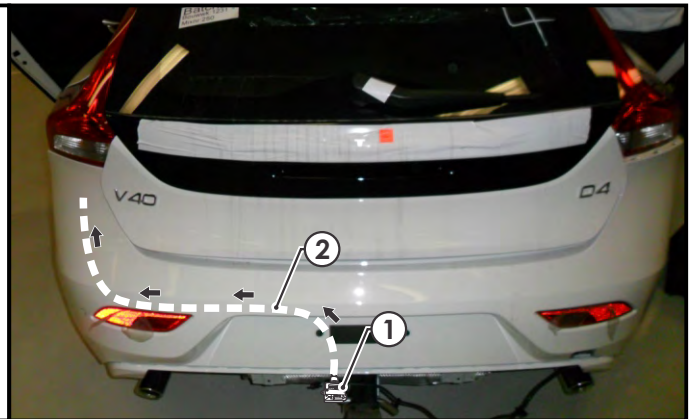
INSTALLATION INSTRUCTIONS

PLEASE ENSURE THAT INSTRUCTIONS ARE UNDERSTOOD PRIOR TO FITMENT

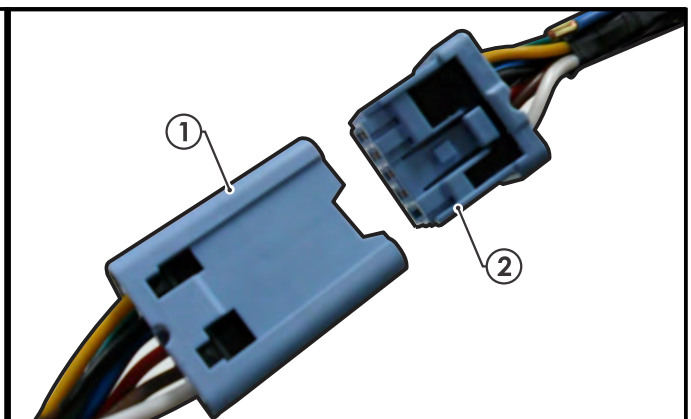
25. Inside the fuse panel, locate the 10-amp (1) fuse as shown and remove.
26. Insert the supplied 20-amp fuse (2) into the upper slot of the add-a-fuse (3) and insert the previously removed 10-amp fuse (1) into the bottom slot of the add-a-fuse (3).
27. Plug the add-a-fuse (3) into the previously removed 10-amp fuse slot.
28. Connect the power patch 1-way connector (4) into the add-a-fuse harness mating connector (5).



29. Mount the trailer socket (1) to the tow bar mounting bracket using M4 fasteners (not supplied).
30. Route the tail harness (2) across the tow bar towards the LHS of the vehicle and up through the previously drilled out hole.
31. Ensure the tail harness grommet is seated correctly and secure in place using a cable tie (not supplied).



32. Connect the tail harness (tail length 1200mm) 8-way connector (1) to the trailer wiring harness mating 8-way connector (2).



Issue Date 19-12-12

Page 8

Part No: 100880-WL

Hayman Reese (Cequent)
PO Box 4050, Dandenong South VIC 3164
Phone 1800 812 017 Email info@haymanreese.com.au

www.haymanreese.com.au



HAYMAN REESE
PART No: 100880-WL
VOLVO V40

INSTALLATION INSTRUCTIONS

PLEASE ENSURE THAT INSTRUCTIONS ARE UNDERSTOOD PRIOR TO FITMENT

- | | |
|--|--|
| <ul style="list-style-type: none">33. Test the trailer wiring harness function using a light board or multi meter.34. Secure all harnesses using cable ties (not supplied).35. Re-fit all removed parts and secure all fasteners, ensuring there are no squeaks or rattles.36. Place the fitting instructions in the glove box after fitment. | |
|--|--|

Issue Date 19-12-12

Page 9

Part No: 100880-WL

Hayman Reese (Cequent)
PO Box 4050, Dandenong South VIC 3164
Phone 1800 812 017 Email info@haymanreese.com.au

www.haymanreese.com.au

