

INSTALLATION INSTRUCTIONS



R2040W - TO SUIT VOLVO XC90 07/03- ON

PLEASE READ INSTRUCTIONS THROUGH BEFORE YOU BEGIN

WARNING : 1. Do not drill, cut weld or otherwise modify the towbar.

2. If you are using electric welding on a motor vehicle, always check that the vehicle is not equipped with electronic engine or instrument management equipment. Failure to do so could destroy any onboard computers.

If in doubt, check with the vehicle's manufacturer.

Max. Towing Weight: 2250kg

1. Ensure all hardware items have been included.
2. Remove spare wheel.
3. Remove and discard towing eye from driver's side.
4. Remove rear most exhaust mounting bracket from sub-frame on the driver side (In newer model, remove the bracket from the passenger side as well).
5. Remove exhaust from rubber near diff, and let it hang.
6. Cut bumper as per diagrams.
7. Fit towbar into position over exhaust first then line up with captive nuts in chassis rails.
8. Fit bolts supplied as per diagram making sure towbar is square to bumper cut, tighten to torque listing (In newer models, discard the rearmost bolt on the driver side, use it on the older models only).
9. Exhaust hanger brackets to be refit with towbar.
10. Refit spare wheel.
11. Towbar rating sticker to be conspicuously located on the inside rear end of the driver's door. (See diagram below)

RECOMMENDED ASSEMBLY TORQUE LISTING

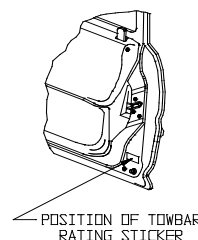
<u>Diameter</u>	<u>Grade 4.6 Bolt</u>	<u>Grade 8.8 Bolt</u>
	Nm	Nm
M6	3.5	9.5
M8	8.6	21.7
M10	16.9	43.4
M12	29.8	77.3
M16	74.0	189.8

FOR TOWING PURPOSES ONLY

For towing capacity details please refer to vehicle owner's manual or to the manufacturer. Overloading can void your warranties.

PLEASE NOTE: You must remove the lug unless you are actually towing if it obscures your number plate. Failure to do so may result in a fine.

IMPORTANT: Please see over for safety chain hook-up procedure.



R2040W - TO SUIT VOLVO XC90 07/03 ON

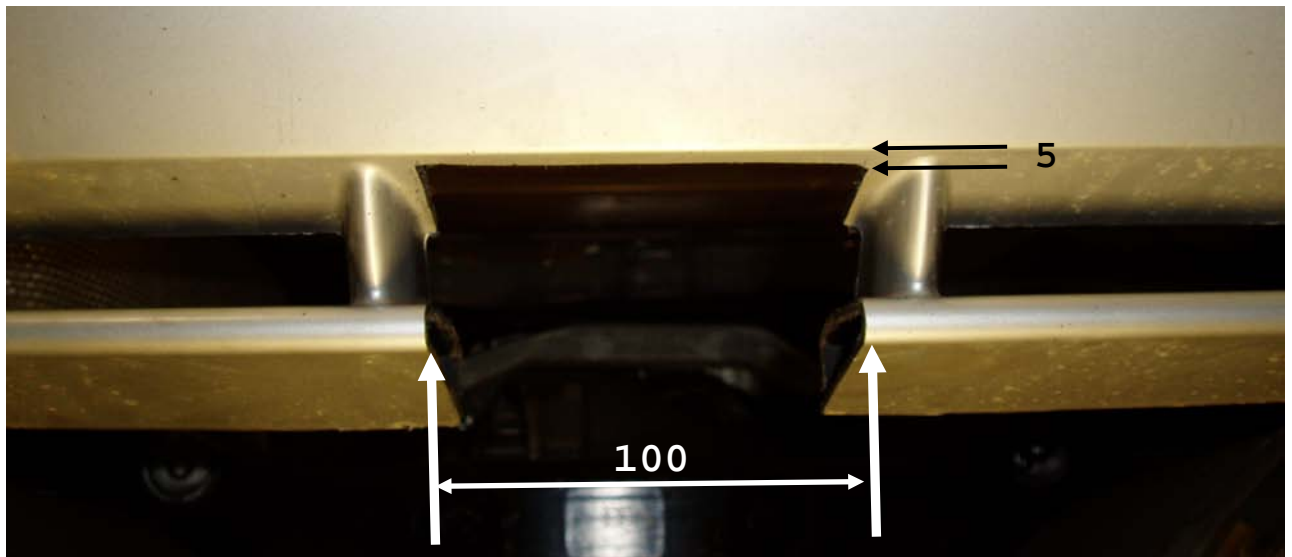


Bumper cut diagram 1, use fins on bumper as a guide.

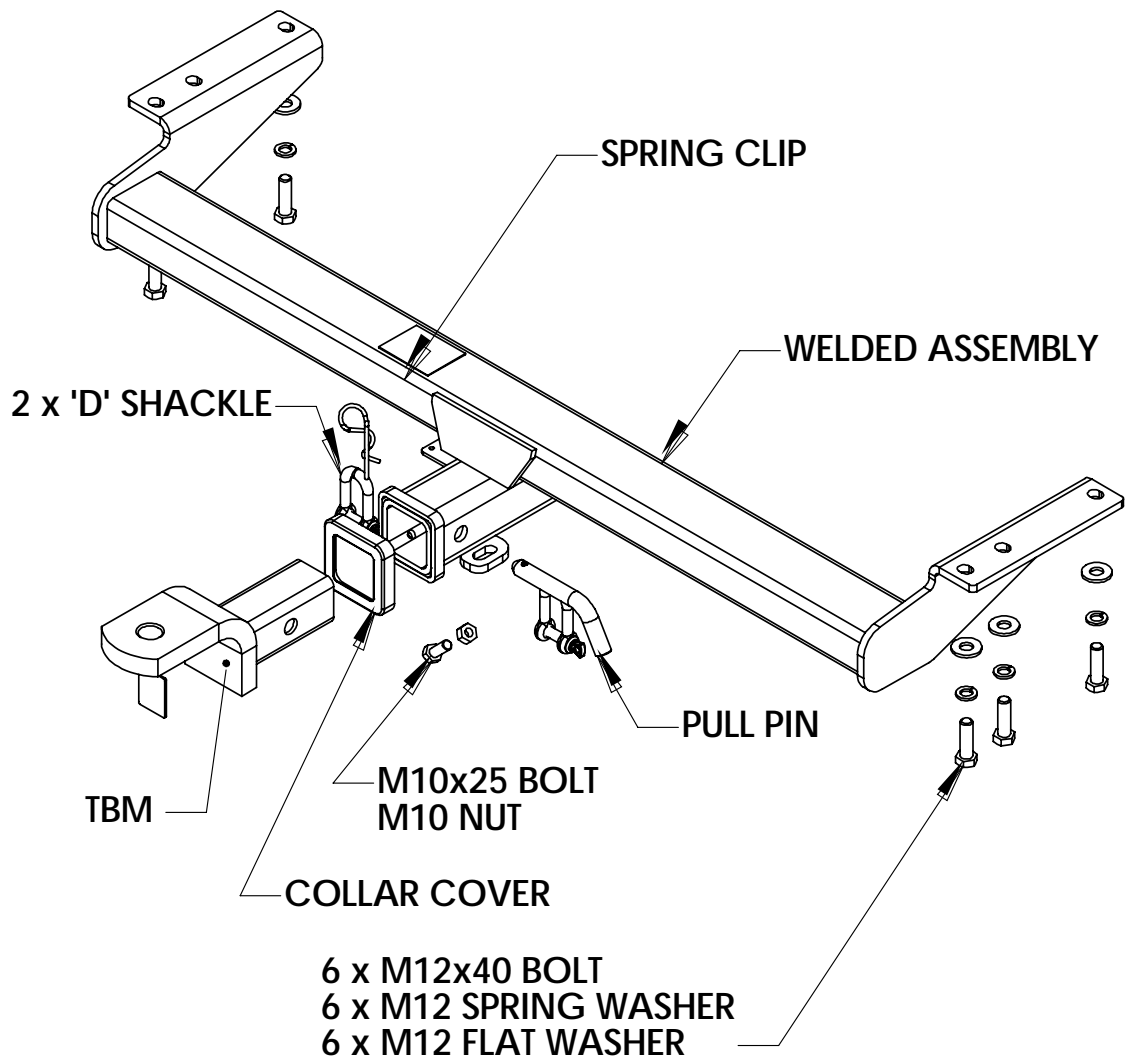


Bumper cut diagram 2, 75mm to be measured around the outside of the bumper.

R2040W - TO SUIT VOLVO XC90 07/03 ON



Bumper cut diagram 3, R Design model.



HAYMAN REESE
PART No: 100150-WL
VOLVO XC90

INSTALLATION INSTRUCTIONS

PLEASE ENSURE THAT INSTRUCTIONS ARE UNDERSTOOD PRIOR TO FITMENT

Wiring Loom Installation Instructions

VOLVO XC90
Part No: 100150-WL

Tail Harness Length Required: 1200mm
ECU Required Part No: 04826
RPA Override Switch Part No: 04848 (If Fitted)

Wiring Loom Installation Time: Approx 30 Mins

Issue Date 05-10-09

Page 1

Part No: 100150-WL

Hayman Reese (Cequent)
PO Box 4050, Dandenong South VIC 3164
Phone 1800 812 017 Email info@haymanreese.com.au

www.haymanreese.com.au



HAYMAN REESE
PART No: 100150-WL
VOLVO XC90

INSTALLATION INSTRUCTIONS

PLEASE ENSURE THAT INSTRUCTIONS ARE UNDERSTOOD PRIOR TO FITMENT

1. In the luggage compartment, remove the floor trim (1).



2. Remove the LHS luggage compartment side floor trim (1) and the access panel (2).

Repeat for the RHS.



3. Remove the battery support bracket (1) and then remove the battery cover.



Issue Date 05-10-09

Page 2

Part No: 100150-WL

Hayman Reese (Cequent)
PO Box 4050, Dandenong South VIC 3164
Phone 1800 812 017 Email info@haymanreese.com.au

www.haymanreese.com.au

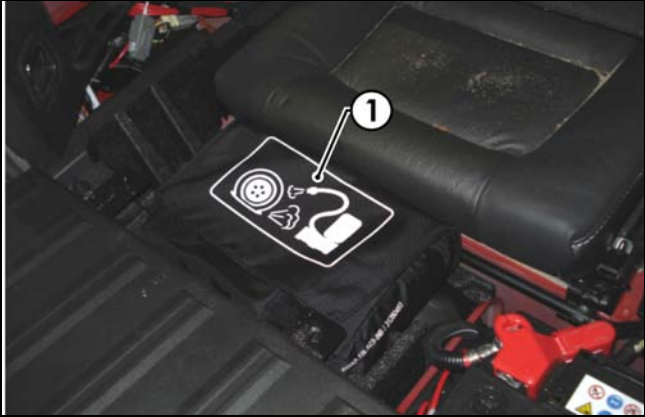


HAYMAN REESE
PART No: 100150-WL
VOLVO XC90

INSTALLATION INSTRUCTIONS

PLEASE ENSURE THAT INSTRUCTIONS ARE UNDERSTOOD PRIOR TO FITMENT

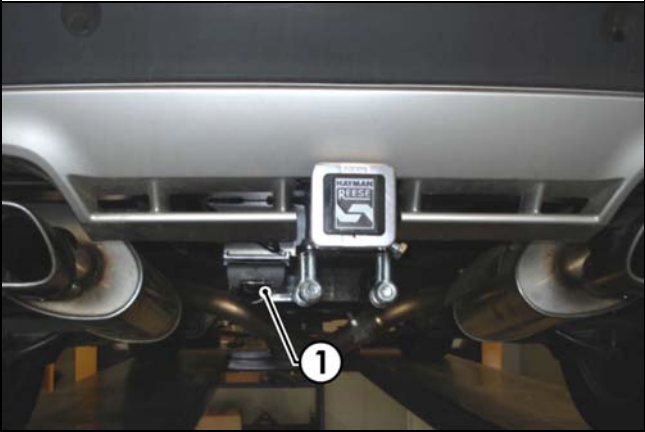
4. Remove the air compressor (1).



5. On the RHS of the battery compartment, carefully drill a Ø31mm hole into the indicated position (1). File down any rough edges and spray on rust inhibitor around the hole.



6. Underneath the rear of the vehicle, mount the Tail Harness (tail length 1200mm) socket (1) to the towbar mounting bracket using M4 fasteners (not supplied).



Issue Date 05-10-09

Page 3

Part No: 100150-WL

Hayman Reese (Cequent)
PO Box 4050, Dandenong South VIC 3164
Phone 1800 812 017 Email info@haymanreese.com.au

www.haymanreese.com.au



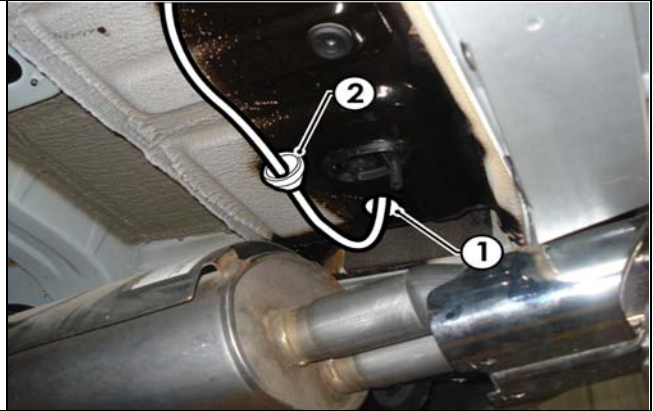
HAYMAN REESE
PART No: 100150-WL
VOLVO XC90

INSTALLATION INSTRUCTIONS

PLEASE ENSURE THAT INSTRUCTIONS ARE UNDERSTOOD PRIOR TO FITMENT

7. Route the tail harness (1) across to the drilled hole ensuring to keep the harness away from the exhaust pipe.

Adjust the tail harness grommet (2) to the desired position ensuring that the tail harness grommet (2) is seated correctly into place. Secure grommet with a cable tie (not supplied).



8. In the luggage compartment, retrieve the tail harness (1) from the drilled hole.



9. Patch the Trailer Harness (P/No: 100150-WL) connectors (2) in between the tail light connectors (1).



Issue Date 05-10-09

Page 4

Part No: 100150-WL

Hayman Reese (Cequent)
PO Box 4050, Dandenong South VIC 3164
Phone 1800 812 017 Email info@haymanreese.com.au

www.haymanreese.com.au

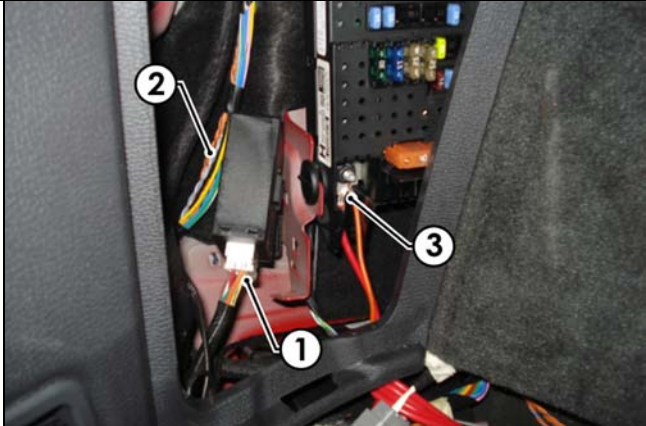


HAYMAN REESE
PART No: 100150-WL
VOLVO XC90

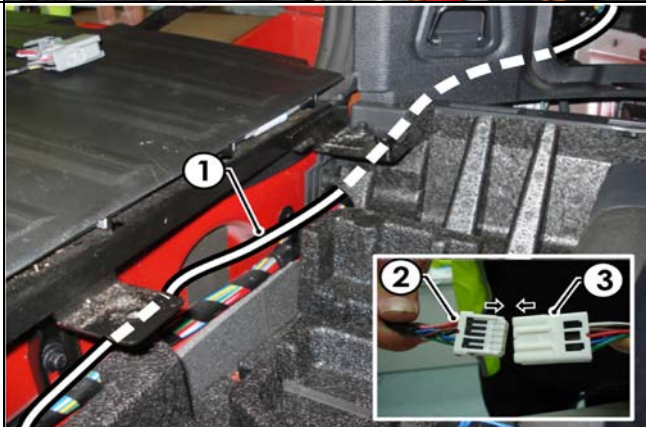
INSTALLATION INSTRUCTIONS

PLEASE ENSURE THAT INSTRUCTIONS ARE UNDERSTOOD PRIOR TO FITMENT

10. Connect the trailer patch harness ECU connector (1) to the ECU (2). Secure the trailer patch harness ring terminal to the power point (3) on the fuse panel. Secure the ECU to the vehicle harness using cable ties (not supplied) or using double sided tape onto the fuse panel support sheet metal area.



11. Route the trailer patch harness (1) underneath the trim and foam trays, along the rear of the vehicle towards the RHS. Connect the tail harness connector (2) to the trailer patch harness connector (3).



12. Secure the trailer patch harness ground ring terminal (1) to the vehicle grounding point.



Issue Date 05-10-09

Page 5

Part No: 100150-WL

Hayman Reese (Cequent)
PO Box 4050, Dandenong South VIC 3164
Phone 1800 812 017 Email info@haymanreese.com.au

www.haymanreese.com.au



HAYMAN REESE
PART No: 100150-WL
VOLVO XC90

INSTALLATION INSTRUCTIONS

PLEASE ENSURE THAT INSTRUCTIONS ARE UNDERSTOOD PRIOR TO FITMENT

- | | |
|---|--|
| <ul style="list-style-type: none">13. Refit all previously removed trims and parts.14. Test the Trailer Wiring Harness functionality using a lightboard or multimeter.15. Secure the all harnesses using cables ties (not supplied).16. Place instructions in glove box after fitment. | <p>This box is intentionally blank.</p> |
|---|--|

Issue Date 05-10-09

Page 6

Part No: 100150-WL

Hayman Reese (Cequent)
PO Box 4050, Dandenong South VIC 3164
Phone 1800 812 017 Email info@haymanreese.com.au

www.haymanreese.com.au

