

Install Guide

Front Upper Control Arm Inner Bush

Jeep Grand Cherokee WK2

Z7097-N
Page 1 of 2

Nolathane[®]

Note: These components must be fitted by a qualified person only, as per the manufacturers' service manual. Also, all relevant safety procedures are followed in addition to the following. Photos are an indication and may vary slightly in appearance from the actual product.

Kit Contents:

- 4 x 4944 Bush
- 4 x 22.22x12.3x43 Tube
- 4 x 37.9OD Washer

1. Raise vehicle onto approved floor stands or by hoist.
2. Remove upper ball joint nut and subsequently break its taper to separate the arm from the upright.

Note: The nuts for the left hand upper control arm inner bushes are located inside the engine bay. Since the bolts are secured by locking tabs these nuts will have to be removed prior.

Subsequently, the right hand upper control arm inner bush rear nut can be removed after firstly loosening the steering shaft to steering rack top unit joint bolt. After sliding down the shaft, remove the fasteners holding the heat shield and thus remove the heat shield. (See Figure 01 and 02)



Figure 01 - Steering Shaft to Steering Rack Top Unit prior to



Figure 02 - Steering Shaft to Steering Rack Top Unit after

To remove the right hand control arm inner front nut, part of the inner guard clips (level with upper control arm) is to be removed. Thus, you can remove the control arm nut as the bolt similarly is fixed by locking tab.

3. Remove old bushes with press **paying attention to not collapse the arm**. To avoid collapsing the arm, use spacer(s) whilst pressing the old bushes out and the new bushes in (See Figure 03)
4. One old bushing is removed, press '4944' bushing into arm as shown in Figure 03 and 04.

Install Guide

Front Upper Control Arm Inner Bush

Jeep Grand Cherokee WK2

Nolathane®

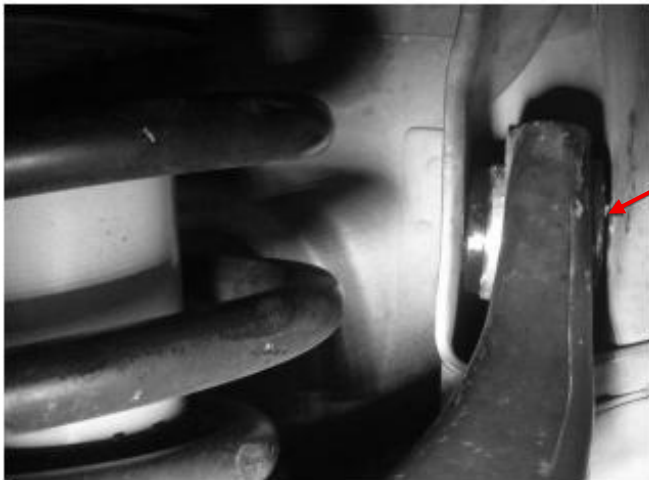


Figure 03 - Spacer utilised in installing '4944' bush



Figure 04 - Pressed '4944' bush

5. Refit control arms ensuring the supplied washers are installed to the outside of the arms.



Installed Supplied
Washer on this end

6. Refit heat shield, steering rack and re-torque all nuts and bolts to manufacturer's specifications. (95Nm for bolt/nut)
7. Wheel align the vehicle and re-tighten all bolts after 1000km.