

# Install Guide

## Rear Upper Control Arm - Bushings

### Install guide - suggested method

- Raise vehicle evenly and safely support with a hoist or stands.

*Never rely on a Jack only*

- Proceed to remove rear wheels.
- Proceed to loosen upper outer ball joint nut  
Before removing nut, break the taper with a hammer to remove ball joint from hub.
- Loosen and remove the 2 inner bushing bolts.
- Note below image of the larger front bushing. This is a 2-piece bushing. Push bushings out with an air-chisel.

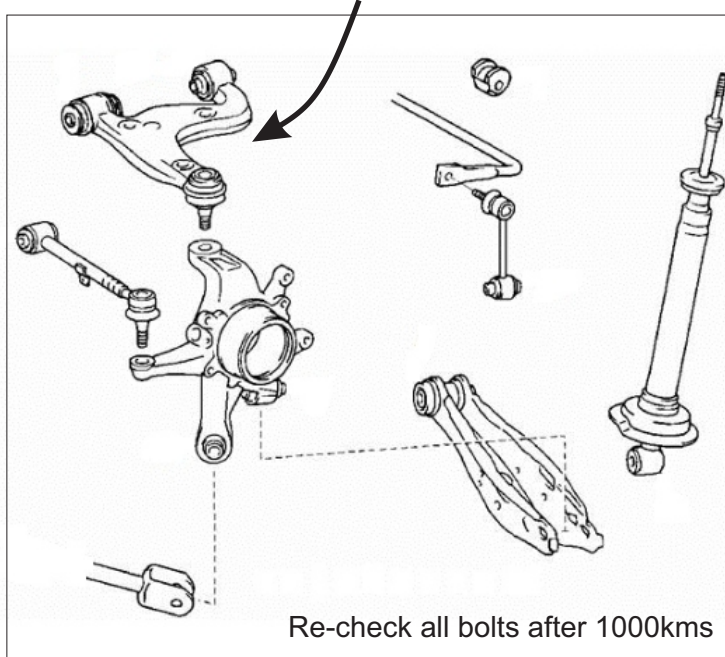


**Application** - Toyota Altezza 99-2005  
- Lexus GS 97-2000  
- Lexus IS 99-2005

*(Always refer current catalogue listing)*

**Contents** - bushings 3043 x4 (front)  
- bushings 3045 x4 (rear)  
- steel tubes 22x12.3x54.5mm x2  
- steel tubes 22x12.3x65mm x2  
- grease

### Upper Arm



- Next, the rear bushing is 1-piece. It is recommended drilling a hole in rubber - between the inner and outer steel tubes. Work up to a big enough drill bit to cut into the outer steel shell.
- Once bushings are removed, push in new supplied bushings into a clean control arm eye.
- Grease bushing internal diameter and side faces with supplied grease only.
- Re-fit arm to vehicle. A wheel alignment is recommended

### Rear Bushing



**Note:** These components must be fitted by a qualified person only, as per the manufacturers service manual. Also, that all relevant safety procedures are followed in addition to above.