

# Install Guide

## Brake Hose and ABS Cable Mount Spacer Kit Toyota Hilux 8<sup>th</sup> Gen

Z7084-N  
Page 1 of 2

**Nolathane**<sup>®</sup>

**Note:** These components must be fitted by a qualified person only, as per the manufacturers' service manual. Also, all relevant safety procedures are followed in addition to the following. Photos are an indication and may vary slightly in appearance from the actual product.

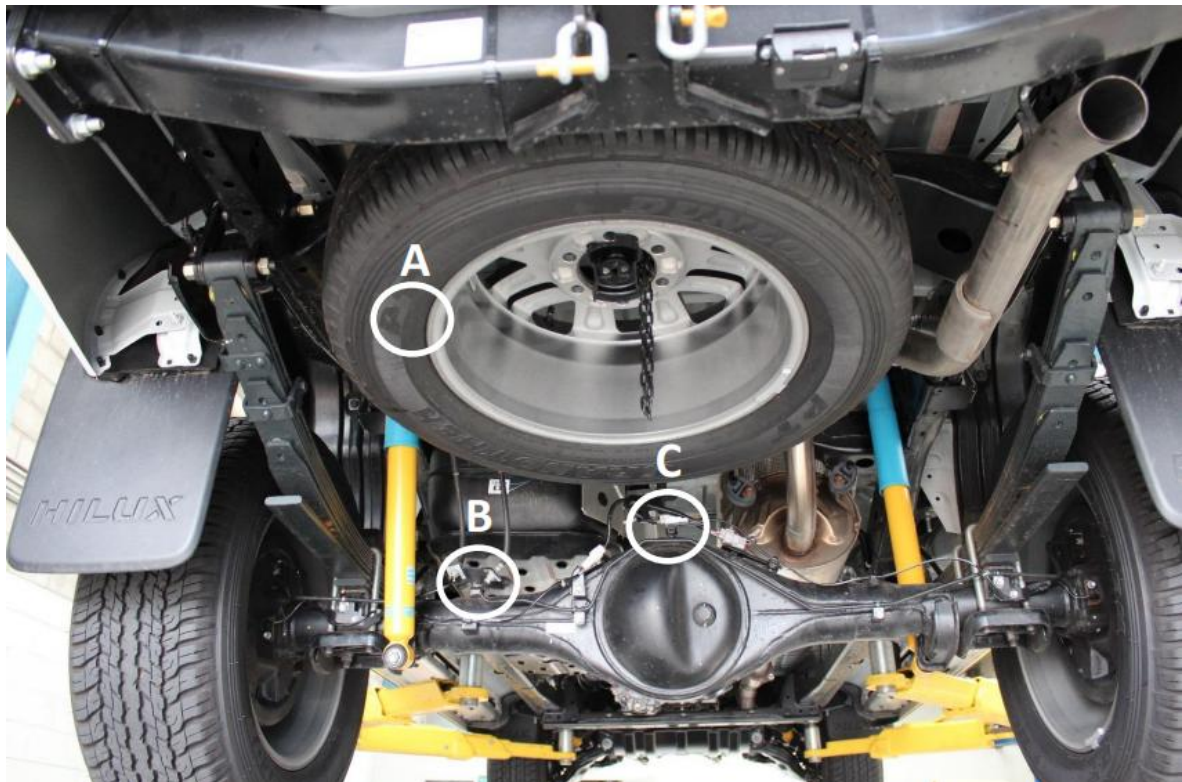
### Kit Contents:

- 4 x Spring Washer
- 4 x M8 Flat Washer
- 2 x M8x40mm Bolt
- 1 x M8x35mm Bolt
- 1 x M8x25mm Bolt
- 1 x 12.7x8.3x9.5 Steel Tube
- 3 x 12.7x8.2x20 Steel Tube

NOTE: this kit **must** be fitted if extended length rear shock absorbers are installed.

There are three locations where the spacer tubes must be fitted.

- **Location A:** The upper brake line bracket mount on the LHS of the vehicle in front of the rear shock absorber near the top. Approximate position is shown in Picture 1 (obscured in this view by the spare wheel).
- **Location B:** The lower brake line bracket mount attached to the top of the differential housing on the LHS of the vehicle. Circled in Picture 1.
- **Location C:** The lower ABS cable bracket mount attached on top of the differential centre. Circled in Picture 1



Picture 1: Underneath view of Hilux rear axle.

NOTE: Production tubes have a smaller outside diameter to the tubes in the following pictures.

# Install Guide

## Brake Hose and ABS Cable Mount Spacer Kit

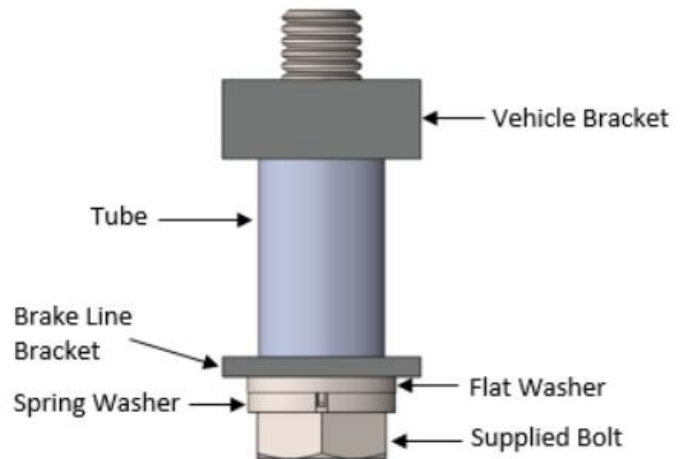
### Toyota Hilux 8<sup>th</sup> Gen

**Nolathane**<sup>®</sup>

**Location A:** Fit 2 x 20 mm long spacer tubes to the rear upper brake hose mount using 2 x 40 mm bolts with 1 x spring washer and 1 x flat washer per bolt. See Picture 2 below for spacer positioning and Picture 3 below for bolt/washer assembly order.



Picture 2: Rear upper brake hose mount spacer position

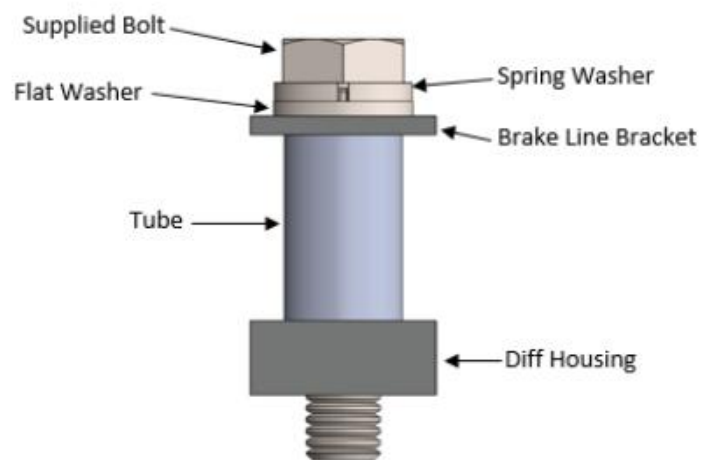


Picture 3: Assembly of brake hose mount spacer

**Location B:** Fit 1 x 10 mm spacer tube using 1 x 25 mm bolt with 1 x spring washer and 1 x flat washer to the rear lower brake hose mount. See Picture 4 below for positioning and Picture 5 below for bolt/washer assembly order.



Picture 4: Rear lower brake hose mount spacer position

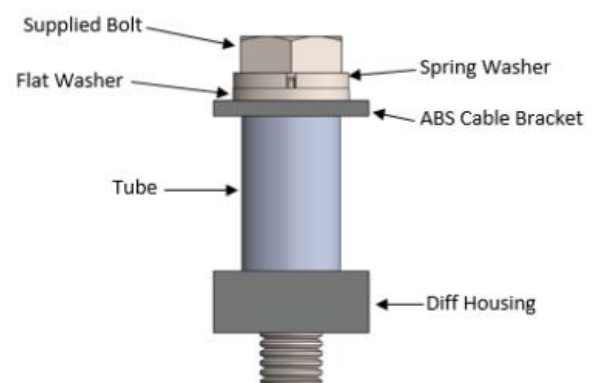


Picture 5: Assembly of brake hose mount spacer

**Location C:** Fit 1 x 20 mm long spacer tube to the ABS cable mount using 1 x 35 mm bolt with 1 x spring washer and 1 x flat washer. See Picture 6 below for positioning and Picture 7 below for bolt/washer assembly order.



Picture 6: ABS cable mount spacer position



Picture 7: Assembly of ABS cable mount spacer