

Install Guide

Rear Differential Mount Bushing

Mazda CX-9 2007-2015

Nolathane[®]

Note: These components must be fitted by a qualified person only, as per the manufacturers' service manual. Also, all relevant safety procedures are followed in addition to the following. Photos are an indication and may vary slightly in appearance from the actual product.

Kit Contents:

- 2 x Bushes

Note: *It is possible to remove and replace these bushes without removing sub frame.*



Original bushes

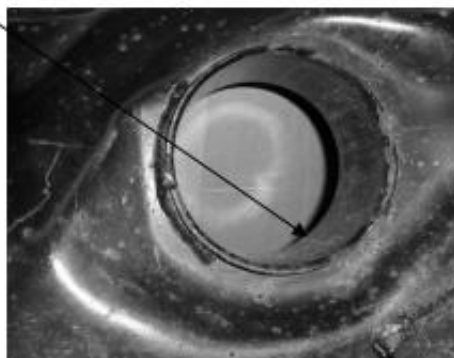
1. Jack vehicle and put on stands or support on hoist.
2. Remove the spare wheel to help with access to the area.
3. Support the differential and remove the nuts attaching the differential support bracket to the bushes.
4. Remove the mounting bracket that bolts to the top of the differential to gain access for removing the bush.
5. Remove the bush using suitable extraction tools or cut out with a reciprocating saw and/or cold chisel.
6. Care must be taken to not damage the sub frame.
7. Clean up housing area.
8. Using the diagrams as a reference assemble suitable sleeves, receivers, threaded rod and washers and pull the new bush into place.
9. Note on the bushing there is a part number stamped in "5220", this must face the front of the car and the snubber part of the bush face the rear.
10. Pull the bush into place so the outer shell sits level with the inside or front face of the cross member as shown.
11. Refit the differential mounting bracket, bolts, centre stud washers and nuts.
12. Refit spare wheel.

Install Guide

Rear Differential Mount Bushing Mazda CX-9 2007-2015

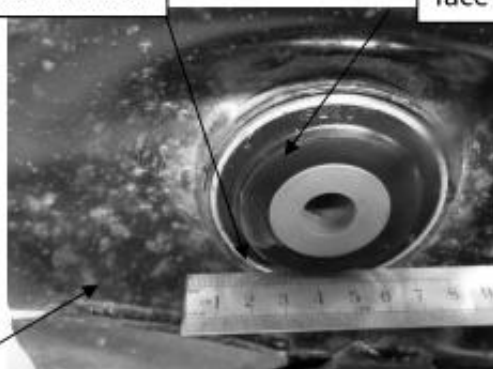
Nolathane[®]

Clean up housing bore ensuring there are no burrs



Note the outer shell of the bush should sit level with the cross member

Note: part number "5220" should face the front of the car as below



Sub frame

View of installed bush looking from the FRONT of the vehicle



Snubber

View of installed bushes from the REAR of vehicle note the snubber needs to face the rear of the vehicle