

Install Guide

Diff to Cross Member to Chassis

Nissan Pathfinder R51

Nolathane[®]

Note: These components must be fitted by a qualified person only, as per the manufacturers' service manual. Also, all relevant safety procedures are followed in addition to the following. Photos are an indication and may vary slightly in appearance from the actual product.

Kit Contents:

- 2 x 5133 Bush

1. Jack vehicle up, put on stands/hoist and lower and/or lower the differential to access the rear differential bushes.
 - a. Support the differential with a stand and remove the two rear differential bolts before removing the front pinion mount bolt.
 - b. Mark axles with a paint pen for alignment and disconnect axles.
 - c. Mark drive shaft with paint pen and disconnect drive shaft.
 - d. Lower the differential from the vehicle.
2. To remove the factory bushes without removing the sub frame you can use an electric saw/drill to cut them out. Alternatively, you can remove the rear sub frame assembly and burn the bushes out or other suitable tool to push them out.
3. To install the new SuperPro Bushes, apply the grease supplied on the outside of the shell and push it into the sub frame. You will need a booker rod, washers, tube, nuts and tools including spanner, ratchet or impact gun.
4. Hold the nut on one end with a spanner and start winding the nut on the other end.
5. Ensure that all bolts are tightened to the manufacture's specifications.

View from Rear of Vehicle



Figure 1. Sub-frame preparation and installation examples.

To Front of vehicle

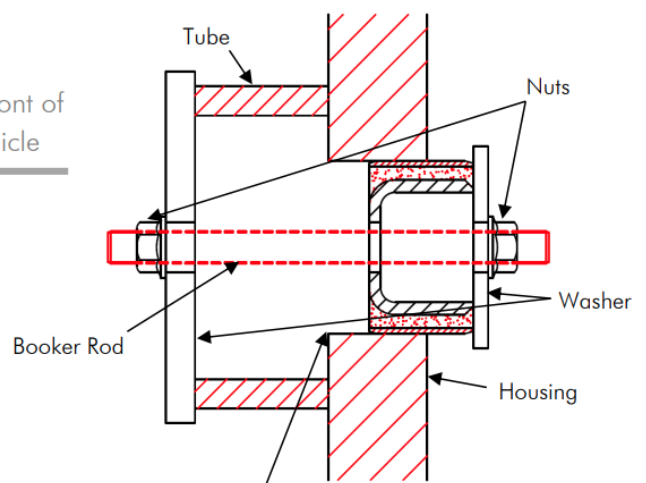


Figure 2. Booker Rod Installation Diagram.