

Install Guide

Front Upper Control Arm Bushings

Install guide - suggested method

Application - Lexus IS 200 99-05
- Toyota Chaser 96-02

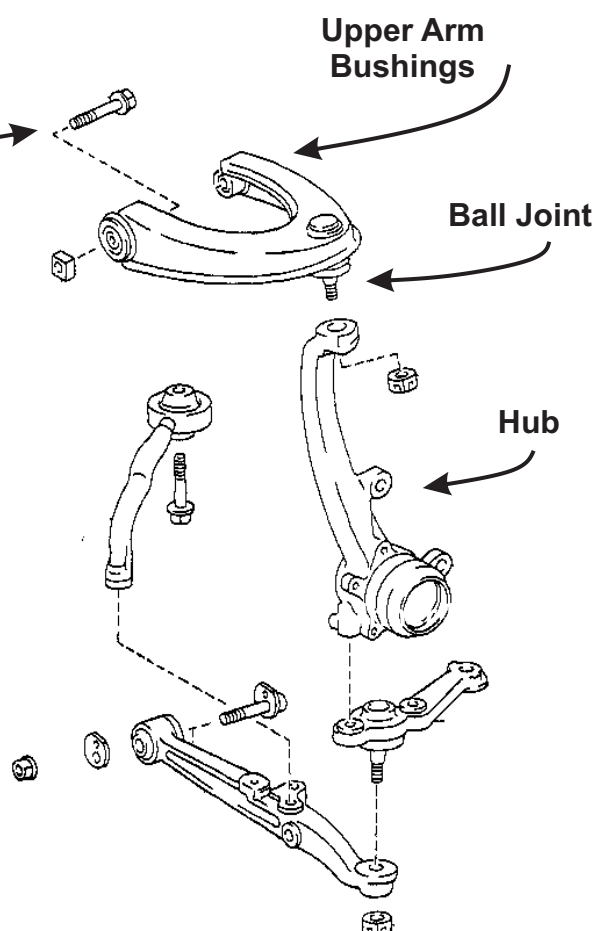
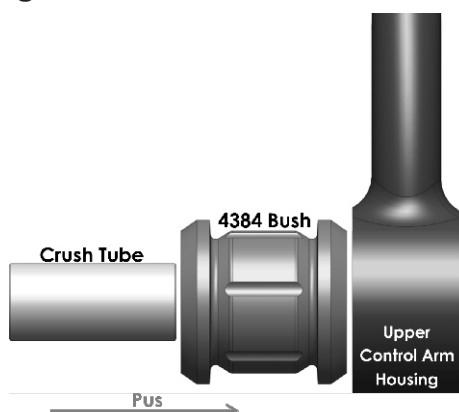
(Always refer current catalogue listing)

- Raise vehicle evenly and safely support with a hoist or stands.

Never rely on a Jack only

- Proceed to remove front wheels.
- Proceed to loosen upper outer ball joint nut
Before removing nut, break the taper with a hammer to remove ball joint from hub.
- Loosen and remove the 2 inner bushing bolts.
- The original bushings will need to be pressed out.
Press out bushing including the steel outer shell.
Alternatively, drill a small hole in the rubber - then work up to a bigger drill to cut the steel outer shell.
- Proceed to push new bushings into clean control arm.

Tip - use soapy water and flat surfaces to press new bushing into control arm:



- Grease bushing internal diameter and side faces with supplied grease only. Push in supplied steel tubes. Re-fit arms to vehicle using original bolts.
- A wheel alignment is recommended. Re-check all bolts after 500kms

Note: These components must be fitted by a qualified person only, as per the manufacturers service manual. Also, that all relevant safety procedures are followed in addition to above.