

Fitting Instructions – Z7043

Dodge Ram 1500, DS, 2009-On

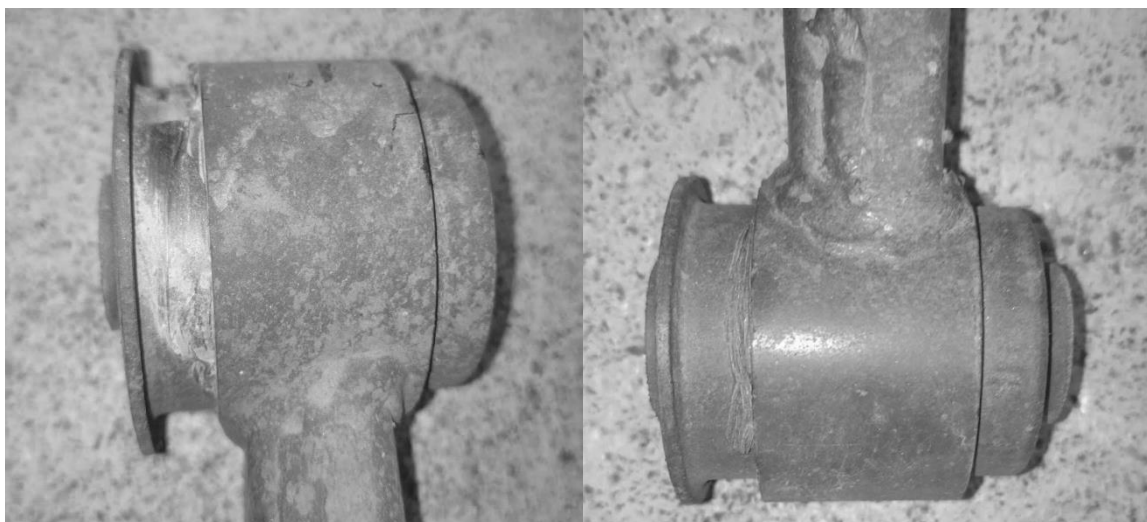
Rear Trailing Arm Bushes

UPPER & LOWER TRAILING ARM KIT CONTENTS		
PART No.	DESCRIPTION	QTY
20156Z	Rear Trailing Arm (Large Bush)	4
20157Z	Rear Trailing Arm (Small Bush)	4
F1631	24x16.2x66.5 TUBE	8

UPPER OR LOWER TRAILING ARM KIT CONTENTS		
PART No.	DESCRIPTION	QTY
20156Z	Rear Trailing Arm (Large Bush)	2
20157Z	Rear Trailing Arm (Small Bush)	2
F1631	24x16.2x66.5 TUBE	4

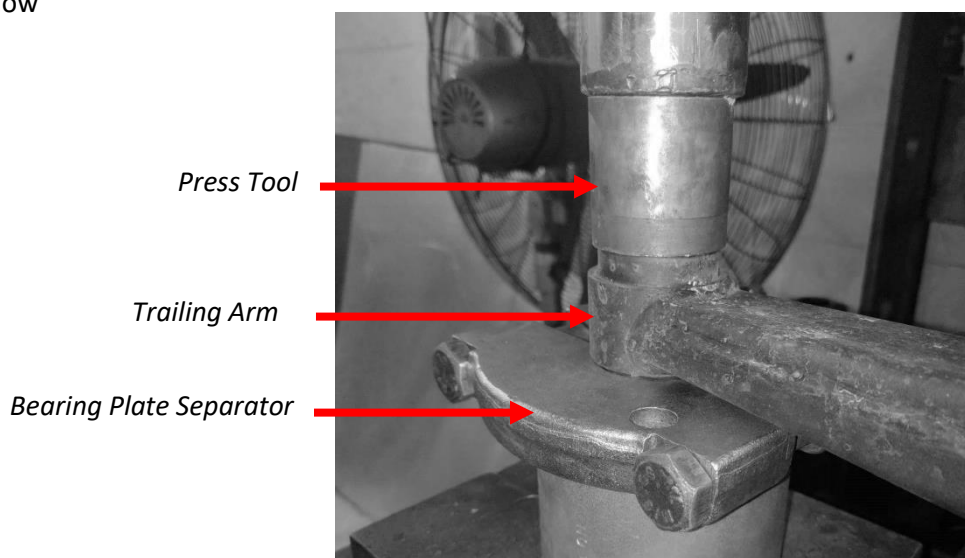
Note, this instruction sheet should be used in conjunction with a workshop manual and proper safety procedures followed.

- Place the vehicle securely on a hoist or jack stands
- Support the rear diff with a jack stand or hydraulic jack
- **Remove one trailing arm at a time**
- Note; the 2 bushes are different diameters, one large and one small, as seen below. Also note how far the shell protrudes from the arm



Large diameter bush pictured on the left and small diameter bush pictured on the right

- Remove OE rubber bushings. This can be done either by cutting the head off the bush and pressing the remainder through the arm or using a bearing plate separator and press tools to remove the bush as shown below

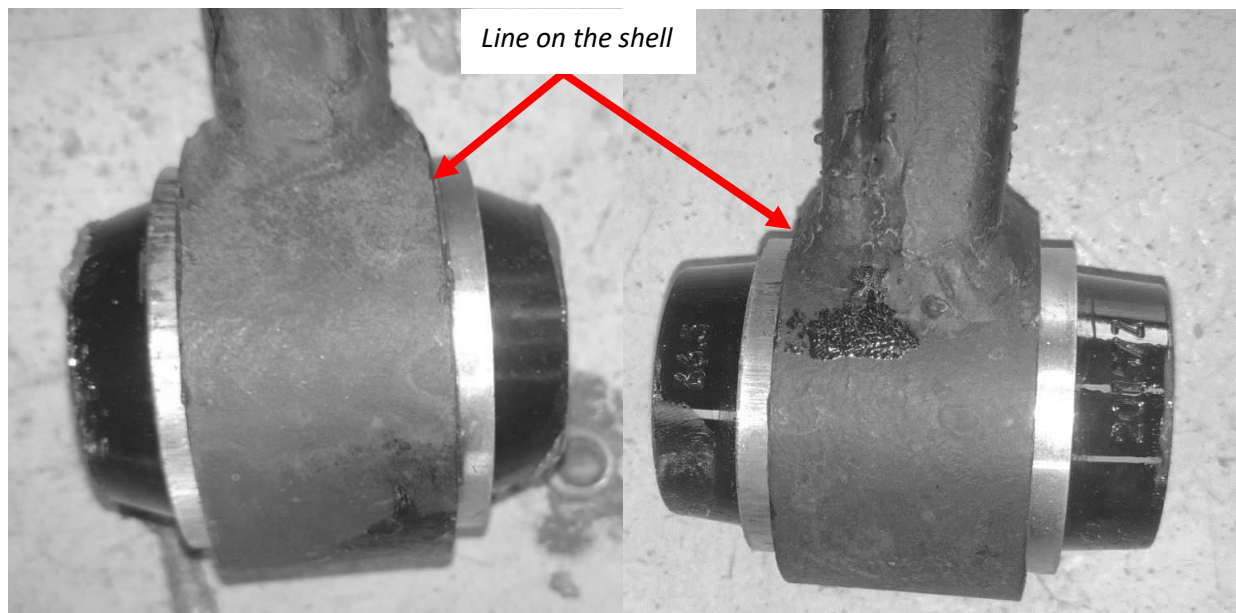


Fitting Instructions – Z7043

Dodge Ram 1500, DS, 2009-On

Rear Trailing Arm Bushes

- **Note; the new bush can be installed in either direction. There is a line on the shell which shows how far the bush needs to be pressed into the arm.**
- Using a press install the correct bush (i.e. large bush for large bush or small bush for small bush) into the arm and press until the line in the bush is aligned with the face of the trailing arm.
- Once pressed the bushes should look as below



Large diameter bush pictured on the left and small diameter bush pictured on the right

- Apply grease to the bore and outer faces of the bushing
- Press the crush tube into the bush
- Reinstall the arm into the car ensuring that it is in the correct orientation. **The arm has the words 'FRAME' and 'AXLE' stamped into it at either end so ensure these are put back in the correct orientation.**
- When reinstalling the arm a ratchet strap or similar may be required to realign the differential to line up the bolt holes
- Once installed ensure to torque the bolts to manufacturers specifications
- Once one arm is completely reinstalled repeat the above process for the remaining arms. Note; the upper and lower trailing arms use the same bushes (one small diameter bush and one large diameter bush per arm)
- Wheel alignment after install is recommended