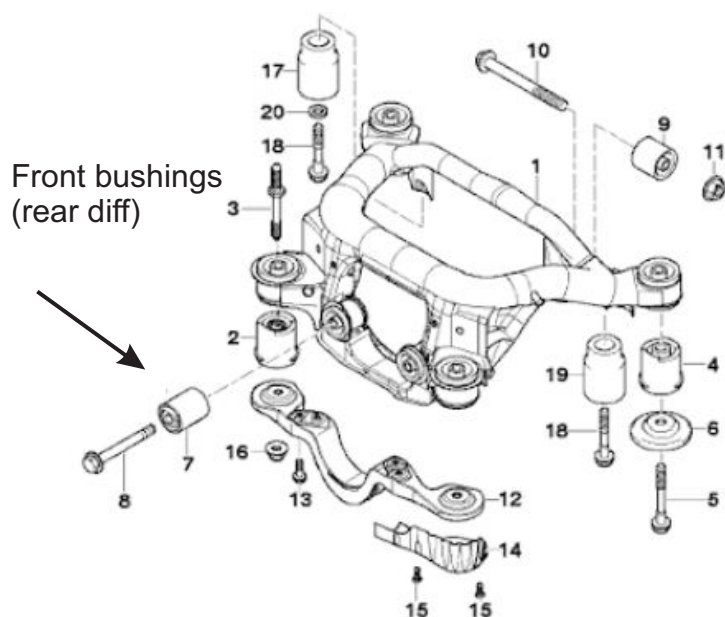


Instructions

Rear Differential Bushings

This instruction sheet should be used in conjunction with the workshop manual and proper safety procedures followed.



Application - BMW 3 Series E46
- BMW Z4 E85/E86/E89

(Refer current catalogue for complete listing)

Contents - 1x bushing 92049
- 2x bushing 92050
- 2x bushing 92051
- steel tube 25.4x12.2x52 x2
- steel tube 28.6x14.4x60 x1
- washer 45x12x2.5 x4
- washer 62x14.5x3 x1

Rear bushing can be removed in
car using a mechanical puller - refer
page 2

- Lift vehicle evenly and safely support.

Never rely on a Jack only

Note - with an appropriate mechanical puller, bushings can be removed in-car. Alternatively, proceed to remove subframe from vehicle.

Careful not to compromise any brake lines when lowering sub-frame.

Refer Page 2



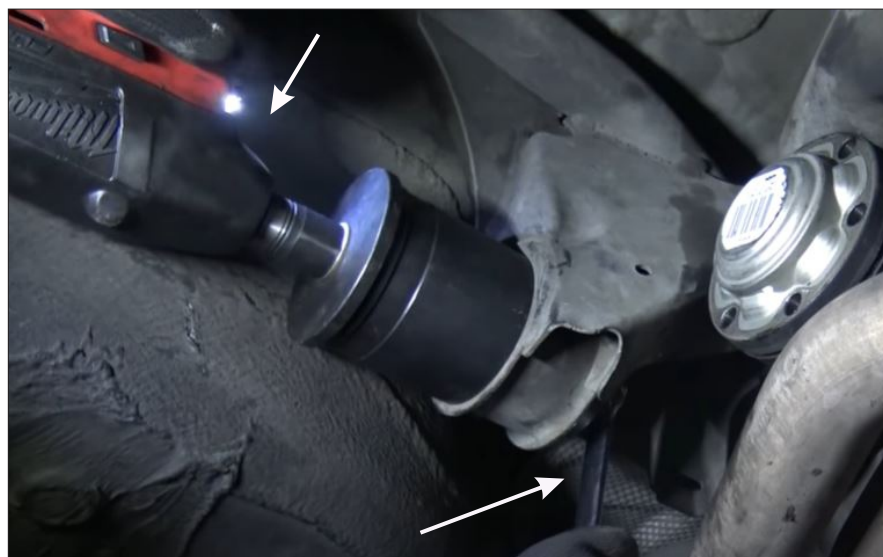
N.B: It is recommended that a licenced workshop or tradesperson carry out the above procedure and that workshop manual and relevant safety procedures are followed in addition to the above.

Instructions

Rear Differential Bushings

This instruction sheet should be used in conjunction with the workshop manual and proper safety procedures followed.

Rattle Gun



- Using a threaded/mechanical puller, 'pull' factory bushing out of sub-frame - remove steel outer shell.

Use quality nuts/bolt/washers - or have spares incase stripping occurs

Alternatively, a hole can be drilled into the rubber, then cut outer steel shell with Air-hack-saw. **Careful to not damage sub-frame.**

Spanner

- Once old bushing is removed, check sub-frame is clean with no burrs.

Refer Page 3 for new bushing arrangement



N.B: It is recommended that a licenced workshop or tradesperson carry out the above procedure and that workshop manual and relevant safety procedures are followed in addition to the above.

Instructions

Rear Differential Bushings

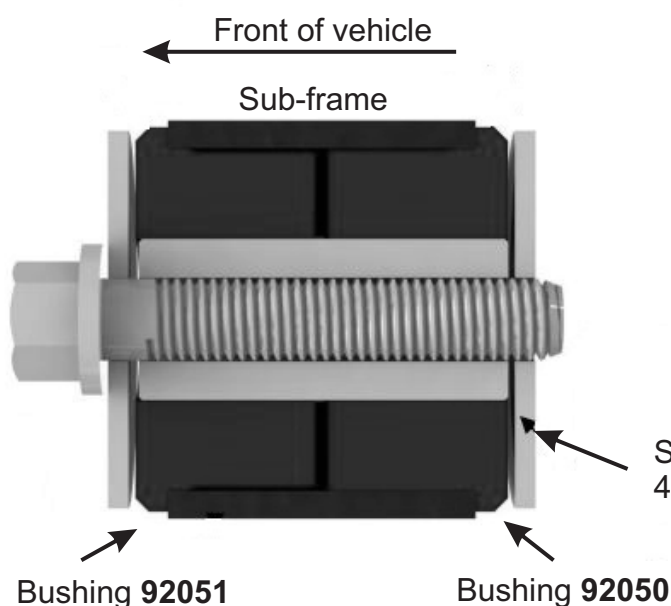
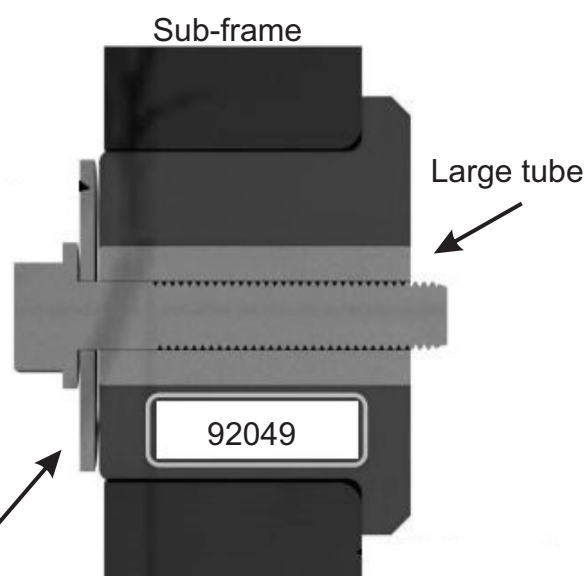
This instruction sheet should be used in conjunction with the workshop manual and proper safety procedures followed.

- Push in new supplied bushings. Use supplied grease - grease bushing internal diameter.

For rear mount, use bushing **92049** with large tube and washer

←
LH side of vehicle

Supplied washer
62x14.5x3mm



- For front mount bushings **92050** and **92051** with small tubes and washers

Re-assemble vehicle.

Carry out a wheel alignment on completion. Re-check all bolts after 200kms

N.B: It is recommended that a licenced workshop or tradesperson carry out the above procedure and that workshop manual and relevant safety procedures are followed in addition to the above.