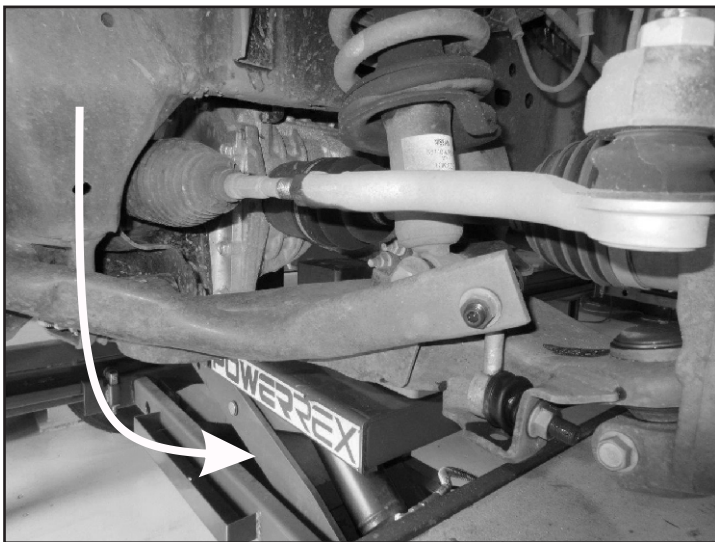


Install Guide

Front Upper A-Arms - Fixed Geometry Improvement

It is recommended, that current wheel alignment settings be noted prior to disassemble

Tip - lifting/jacking lower control arm slightly may improve access to upper ball joint.



Application - Nissan Navara D40
- Nissan Navara D23/NP300
- Mercedes X-Class

(Always refer to current catalogue listing)

Contents - 2x fixed, forged, tubular arms
- complete with H/D ball joints
- and bushings.

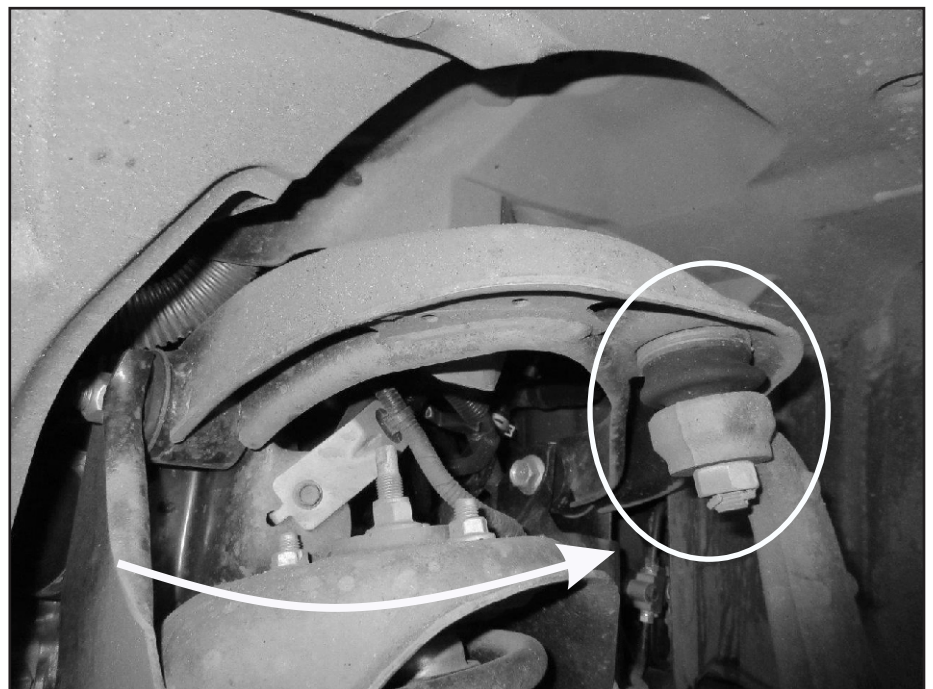
- Raise vehicle evenly and safely support.

Never rely on a Jack only

- Proceed to remove front wheels.

- Loosen upper ball joint nut (do not remove yet).
- Strike hub (up-right assembly) to loosen ball joint taper.
- Once taper is loosened, remove nut.

Refer Page 2



It is recommended that a licenced workshop or tradesperson carry out the above procedure and that workshop manual and relevant safety procedures are followed in addition to the above.

Install Guide

Front Upper A-Arms - Fixed Geometry Improvement

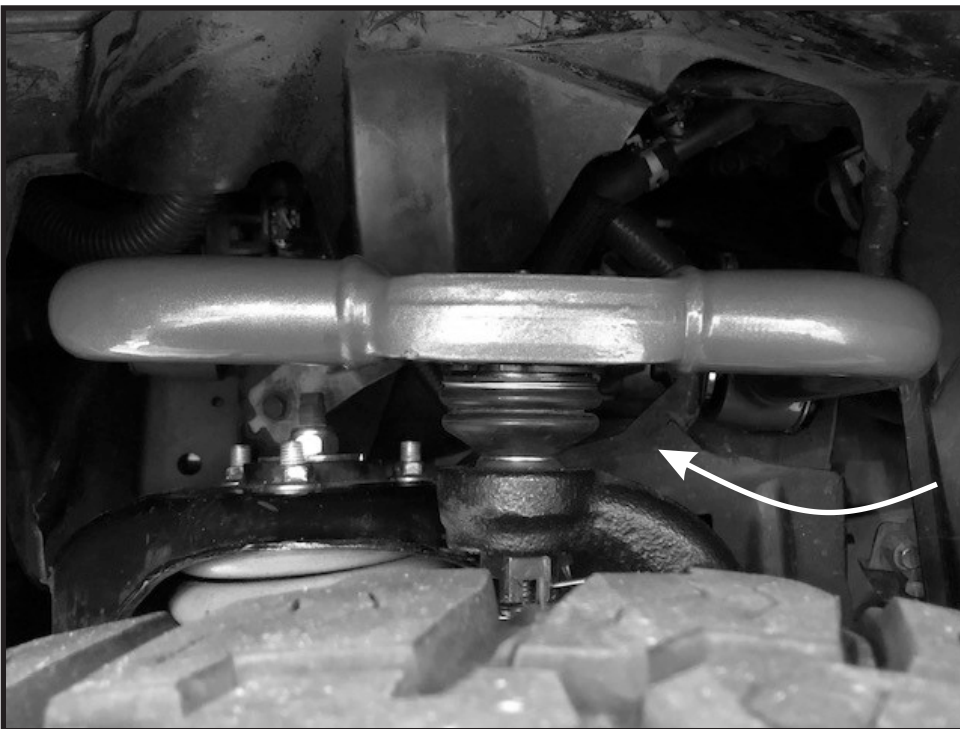
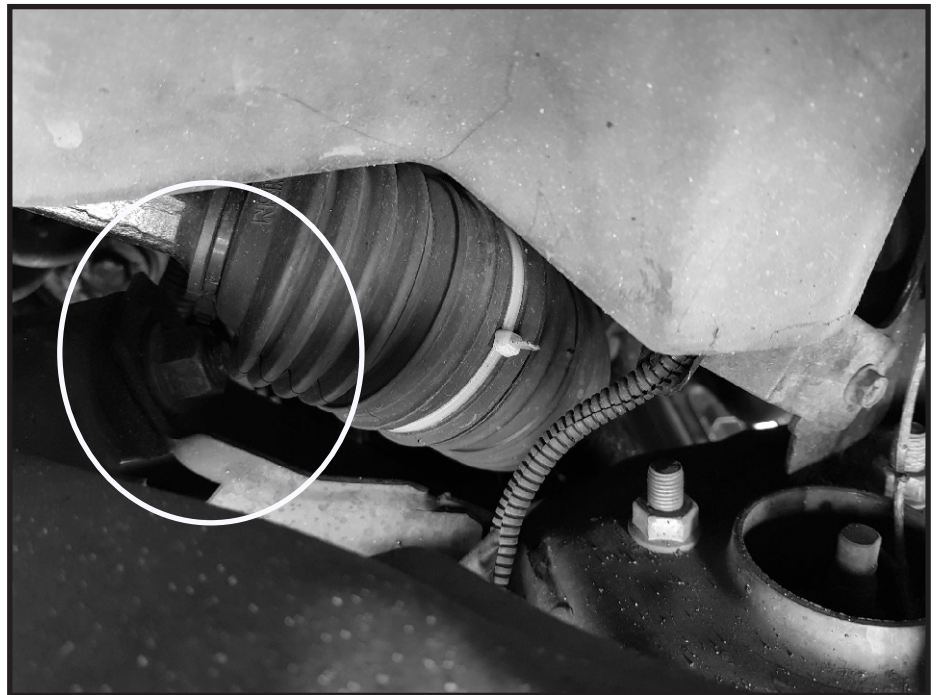
Continued - page 2:

- Proceed to remove inner bushing bolts.

Note - for RHD models, the rear mounting bolt may be difficult to remove due to the steering shaft uni joint.

Removal of dust boot or shaft dis-connection from under the bonnet may be required.

- Proceed to bolt up new control arms.



IMPORTANT - new control arms are marked "**LH and RH**"

Take note of control arm appearance once installed.

Refer LH image of new control arm installed.

- Use new ball joint nut with new split pin.

Refer page 3

It is recommended that a licenced workshop or tradesperson carry out the above procedure and that workshop manual and relevant safety procedures are followed in addition to the above.

Install Guide

Front Upper A-Arms - Fixed Geometry Improvement

Continued - page 3:

IMPORTANT - New control arms are designed to suit a 25-45mm lift.

The addition of a strut-top spacer may present an issue when wheels are at full droop.

It is up to the installer to ensure that the ball joint is not breached (or bound) while wheels are at full droop.



Example - strut-top spacer

- Confirm all nuts and bolts are tight, re-fit front wheels.

Note - a wheel alignment will be required immediately after install.

- Re-check all bolts after 200kms.



It is recommended that a licenced workshop or tradesperson carry out the above procedure and that workshop manual and relevant safety procedures are followed in addition to the above.