

Instructions

Sub-Frame Bushing Inserts

N.B: This instruction sheet should be used in conjunction with the workshop manual and proper safety procedures followed.

Page 1 of 2

Application - BMW X5
(Refer current catalogue listing)

1. Raise vehicle evenly and safely support.

Never rely on a Jack only

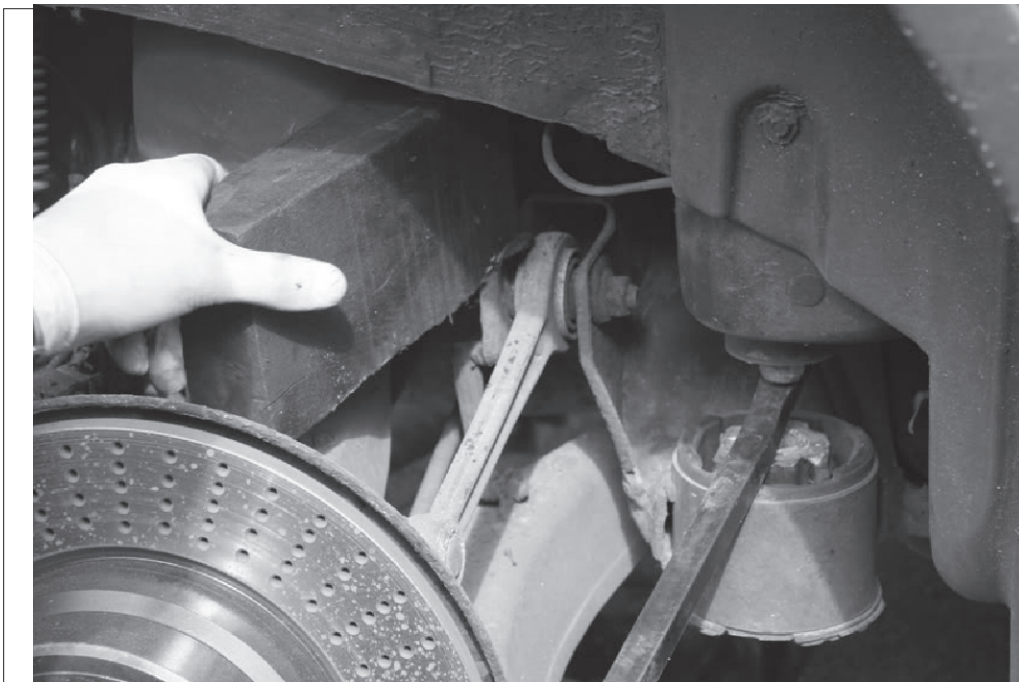
Note - the bushings can be replaced with sub-frame in vehicle.

The original bushings do not have a steel outer shell and can be 'pulled' out with a mechanical/threaded puller.

2. Remove 2 bolts and loosen other 2 on other side. Proceed to lower sub-frame. Use timber to space down - refer image below. Careful of brake lines and ABS wires.

3. Proceed to remove bushings with threaded puller or drill holes in rubber to loosen. Silicon spray or penetrating lube will help.

Contents - bushing 91067 X 4
- bushing 91068 x 4
- steel tubes x 4
- grease



Lower sub-frame down enough to access bushings.

Use timber to support.

Careful of brake lines and ABS wires

N.B: It is recommended that a licenced workshop or tradesperson carry out the above procedure and that workshop manual and relevant safety procedures are followed in addition to the above.

Instructions

Sub-Frame Bushing Inserts

N.B: This instruction sheet should be used in conjunction with the workshop manual and proper safety procedures followed.

Page 2 of 2

4. Once bushing is removed, clean eye-rings.

5. Push new bushings into position.

Push bushing 91068 in from the top.
Push bushing 91067 in from the bottom.

6. Grease bushing ID and face with supplied grease only.

7. Push in supplied steel tube - note the stepped OD to face up-wards.

8. Re-use existing upper and lower washers.

9. Bolt up with existing bolts - tighten to manufacturers spec.

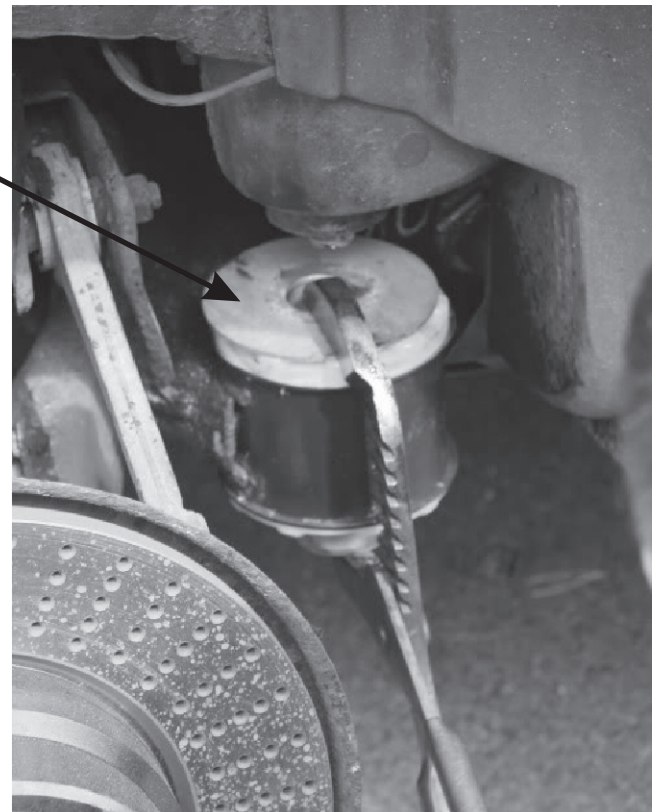
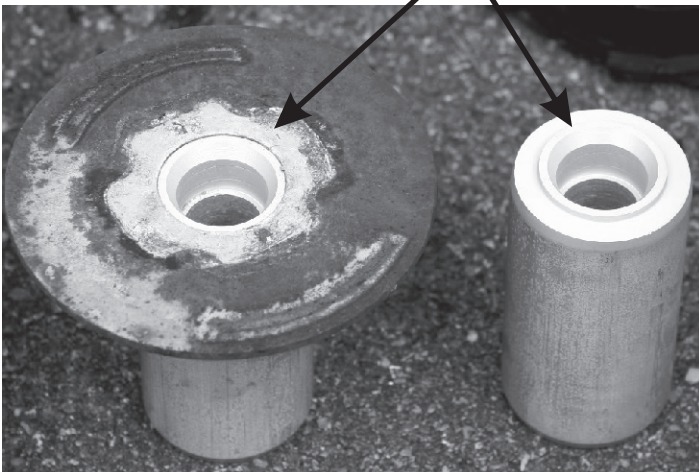
10. Carry out a wheel alignment. Re-check bolts after 100kms travelled.

Application - BMW X5
(Refer current catalogue listing)

Contents - bushing 91067 x 4
- bushing 91068 x 4
- steel tubes x 4
- grease

Use multi-grips to help with bushing install

Note original washer to seat on top of stepped tube



N.B: It is recommended that a licenced workshop or tradesperson carry out the above procedure and that workshop manual and relevant safety procedures are followed in addition to the above.