

Instructions

Brake Line - Extension Mounts - For Raised Vehicles

N.B: This instruction sheet should be used in conjunction with the workshop manual and proper safety procedures followed.

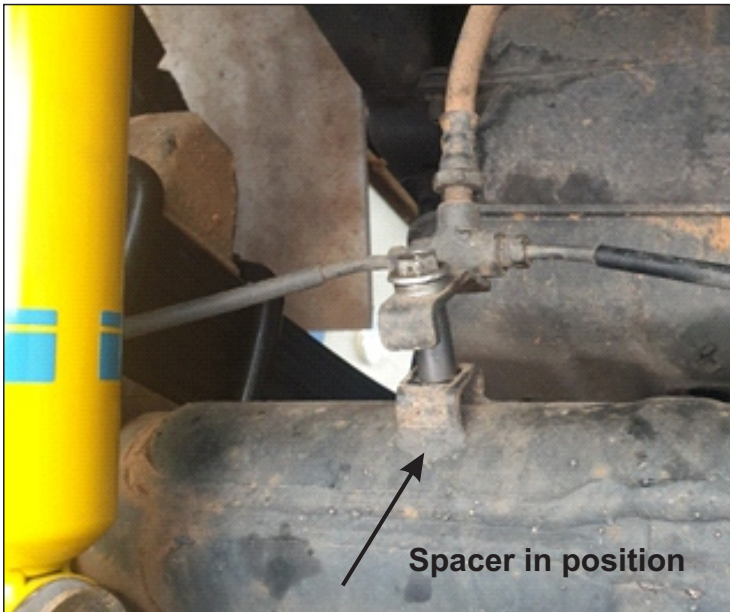


Image #1 - 2005-2011 cars

Application - Toyota Hilux
- 2005-2015
- KUN26 & GGN25 4WD

(Always refer complete catalogue listing)



- Raise vehicle evenly and safely support.

Never rely on a Jack only

- Proceed to remove original bolts from rear axle housing.

**Note - for early models there are 2 bolts
Late models - one bolt only.
Refer images.**

- Place supplied spacer between axle housing and bracket. Mount to axle with supplied M8 bolts and spring washer.
- Proceed to tighten. Do not over tighten - Maximum 25-30Nm
- Confirm brake line now sits above axle and is not fouling on any other items.
- Re-check bolts after 100kms



Image #2 - 2011-on cars

N.B: It is recommended that a licenced workshop or tradesperson carry out the above procedure and that workshop manual and relevant safety procedures are followed in addition to the above.