

**Ford Ranger DC 2022+  
VW Amarok DC 2023+  
(2022 Vehicle Production Onwards)  
TUB PREPARATION FOR CANOPY**



**! PLEASE PROVIDE A COPY OF THESE INSTRUCTIONS TO THE CUSTOMER !**

**IMPORTANT:**

- Vehicle bodies and vehicle specific installation can vary. Please read the following instructions as they refer to important information which could affect the quality of the final canopy installation.
- The majority of preparation can be completed by one person  
(However 2 people will be required to lift the tonneau cover off the vehicle).

**HAVE AVAILABLE THESE SAFETY ITEMS WHEN FITTING PRODUCT:**

- Protective eyewear



- Hearing protection



*NOTE: 'WARNING' notes in the fitting procedure relate to OH&S situations. To avoid a potentially hazardous situation it is suggested that protective safety gear be worn or a safe work procedure be employed. If these notes and warnings are not heeded, injury may result.*

## TOOL LIST FOR TONNEAU COVER AND SAILPLANE REMOVAL:

- Torque Wrench 0-25Nm
- Sockets 7mm, 10mm & 13mm
- Socket extension bar and driver
- Spanners, ratchet type 7mm, 10mm and 13mm.
- Torx Drive T27, T30, T40, screw driver and bits for socket drives.
- Electric or pneumatic drill.
- Small flat blade screw driver.
- Long nose pliers

### REMOVING THE ROLL TOP TONNEAU COVER AND SAILPLANE IS UNDERTAKEN THE FOLLOWING STAGES:

1. REMOVING THE CLEATS FROM THE CARGO MANGAMENT SYSTEM TRACK.
2. REMOVING AND DISCONNECTING THE TONNEAU COVER.
3. REMOVING THE CARGO MANAGEMENT SYSTEM TRACK.
4. REMOVING THE SAILPLANE.
5. REINSTALLING THE CARGO MANAGEMENT SYSTEM TRACK.

**NOTE:** HOLD ALL ALL-REMOVED ITEMS AND FASTENER WITH REMOVING TONNEAU COVER AND SAILPLANE SOME ITEMS WILL BE REFITTED AS DETAILED IN THESE INSTRUCTIONS. THE REMAINING ITEMS COULD BE RETURNED TO THE CUSTOMER OR DISCARDED.

**!! IMPORTANT !! other than specifically specified in this instruction**

**REQUIRED SCREW TORQUES: M6=9Nm (Utility Track screws = 9Nm)**

**SCREW TORQUES:** These must be adhered to avoid warranty issues and should be checked at vehicle service intervals.

## **SECTION 1: REMOVAL OF CLEATS FROM CARGO UTILITY TRACK (IF PRESENT)**



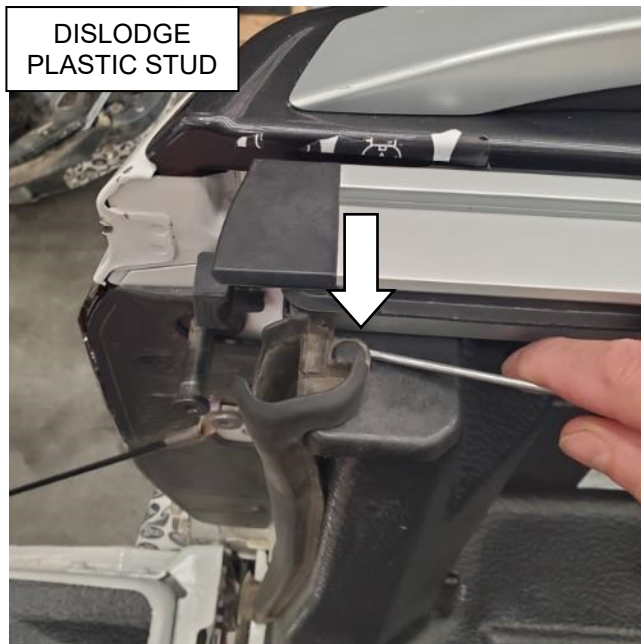
1.1) Retract the roll top tonneau cover to fully open position.

The control button is located under right hand side of steering wheel or in tub on LHS rear corner.



1.2) Remove the four sliding load tie down cleats from cargo utility track and retain them. (Two each side). Retain these.

## **SECTION 2: REMOVING THE ROLL TOP TONNEAU COVER FROM TUB**

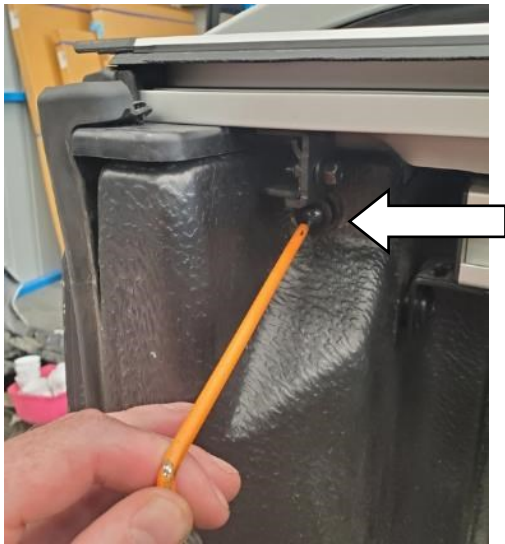


2.0) Using small flat nose screwdriver, lift and dislodge the plastic fastening stud from top of tailgate seal in the rear corners of bed liner on both sides

(Shown is LH side).

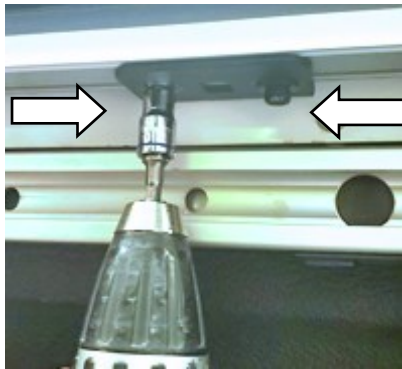


2.0) Pull the plastic end cap on the tailgate sealing system off the ends of the tonneau cover track rail assemblies both sides.



2.1) Using T27 torx drive remove x1, M6 screw from then rear corner mount brackets.

**Retain the screw on each side, as these will be reinstalled at later stage.**



2.2) Locate and remove x3, M6 bolts from underside of tonneau cover track using 10mm socket.

Do this on both sides.



PULL COVER REWARD  
TO DISLodge CLIPS



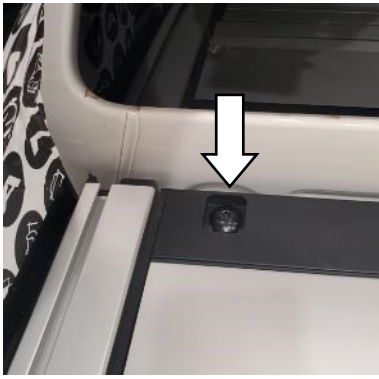
2.3) Remove the plastic side cover mouldings from the front left-hand side of tonneau cover canister.

Place fingers behind bottom edge of moulding and pull firmly, directly rearwards, until the three concealed clips dislodge. Move your fingers up moulding to dislodge the top clip.

**Remove right-hand side using same method.**

2.4) On the right-hand side of tonneau canister locate and disconnect the main electrical power supply connector.





2.5) On the top side of tonneau cover, locate two M6 screws in the front corners near the back of the vehicle cabin.

Using a T40 torx drive remove both screws from the headrail.


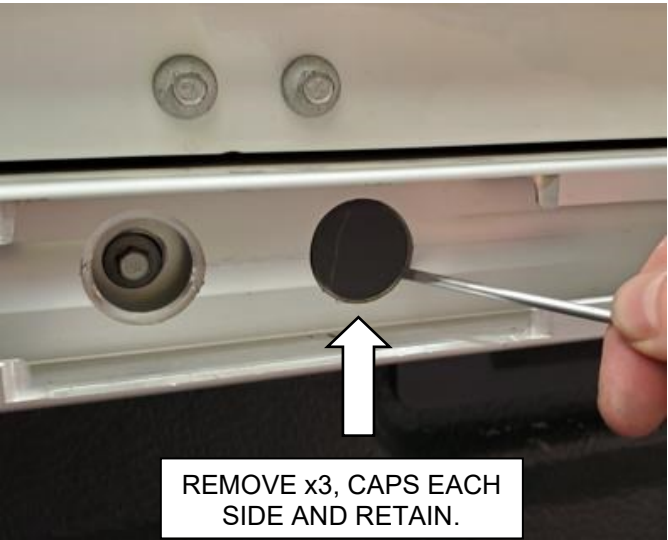
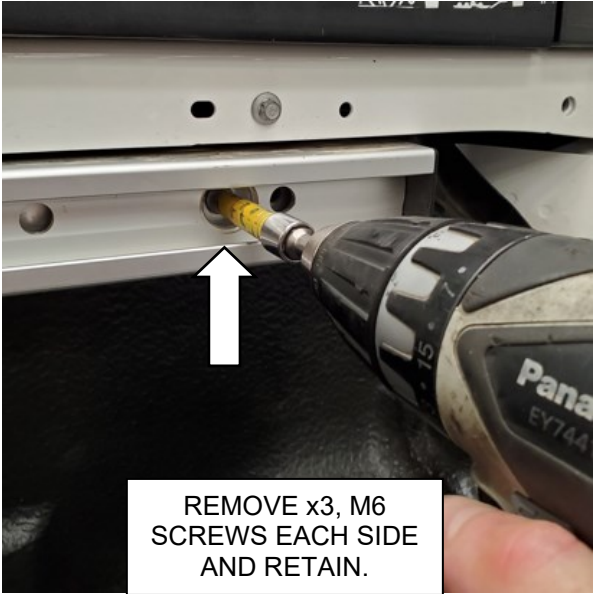
The tonneau cover is now unfastened from tub and can now be removed by lifting it off.

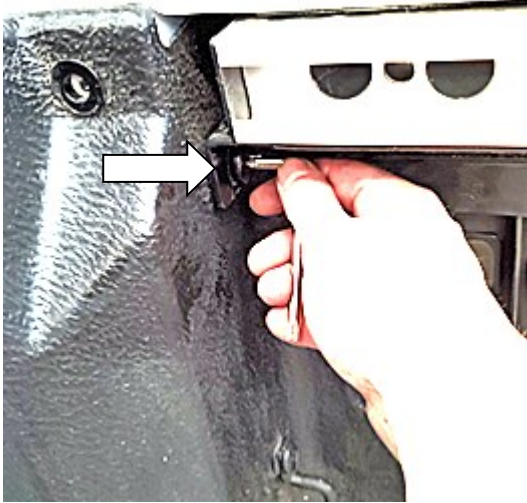


2.6) Using 2 people, each side, grab the front section of the tonneau track and pull the cover upward and rearward of tub.

Lift the cover free from the tub and it's mounting brackets and put it aside.

### SECTION 3: REMOVING CARGO MANAGEMENT SYSTEM TRACK (IF PRESENT)

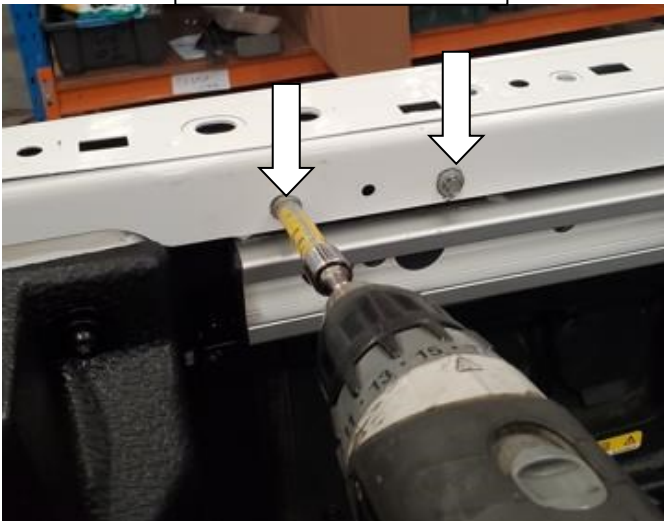
 <p>REMOVE x3, CAPS EACH SIDE AND RETAIN.</p> <p>LEAVE x2, REAR CAPS IN PLACE</p>  <p>REMOVE x3, CAPS EACH SIDE AND RETAIN.</p>	<p>3.0) The Cargo Management System (CMS) rails will now be removed from tub. Retain all fasteners and hardware. <b>This will be reinstalled in final stage.</b></p> <p>Using small flat nose screwdriver remove three front black plastic caps from cargo utility track mount points and retain them</p> <p>Leave two rear plastic caps in place.</p> <p><b>Do both sides.</b></p>
 <p>REMOVE x3, M6 SCREWS EACH SIDE AND RETAIN.</p>	<p>3.1) Using a 7mm socket, remove x3, M6 screws from mounting holes. Retain all screws.</p> <p>Do both sides.</p>



- 3.2) At the rear back corner of the tub, using T40 torx remove the M8 screw from rear bracket on the underside of utility track and retain the screw.

**Do both sides.**

REMOVE X2, SCREWS  
AND RETAIN.



- 3.3) Using 7mm socket remove the x2 rear, M6 screws from vertical inside face lip of tub then hold the mounting bracket in place, to release the CMS track from tub.

Place the CMS track aside.

**Do both sides. Retain these for refitting with all hardware.**



## SECTION 4.0: REMOVING SAILPLANE FROM TUB



4.0) **For Wildtrack only.**  
Locate the x2, M8 nuts under the rear lip of the right-hand tub rail that hold the Sailplane at the rear to the tub. Use a 13mm socket to remove both nuts.

**Do both sides.**

**For Amarok only.**  
Locate the x1, M8 nuts under the centre lip of the right-hand tub rail that hold the Sailplane at the centre to the tub. Use a 13mm socket to remove nut.

**Do both sides.**



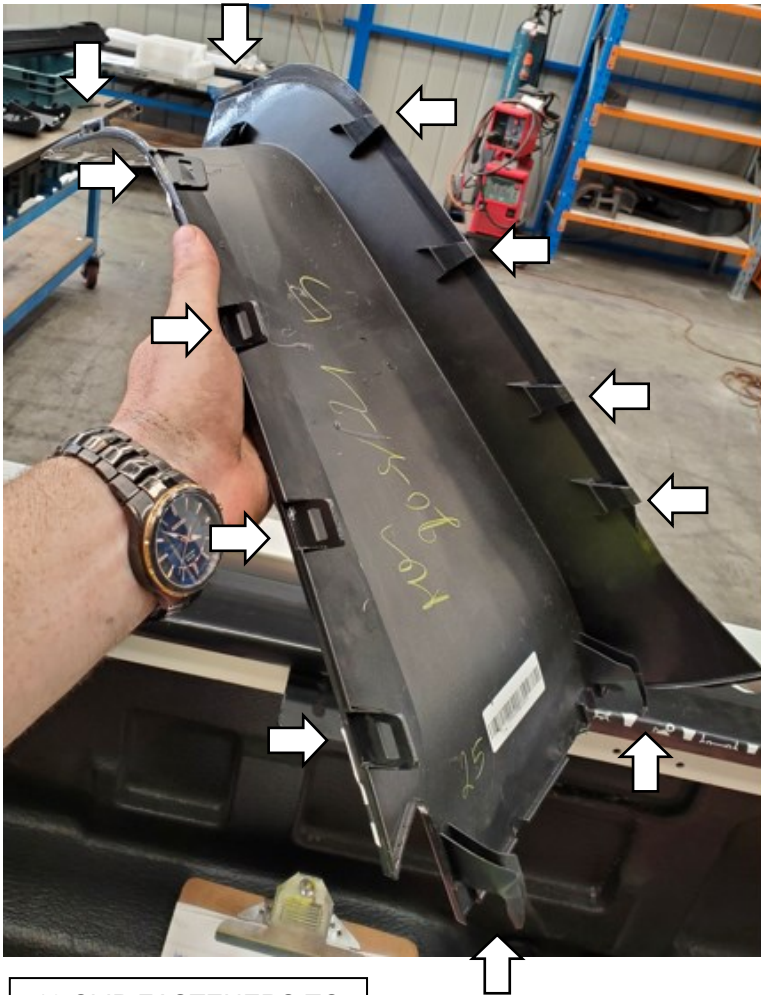
4.1) To remove the Sailplane hoop, place your fingers under inside plastic moulding of sailplane. Pull the inner moulding directly inboard to dislodge the concealed clips.



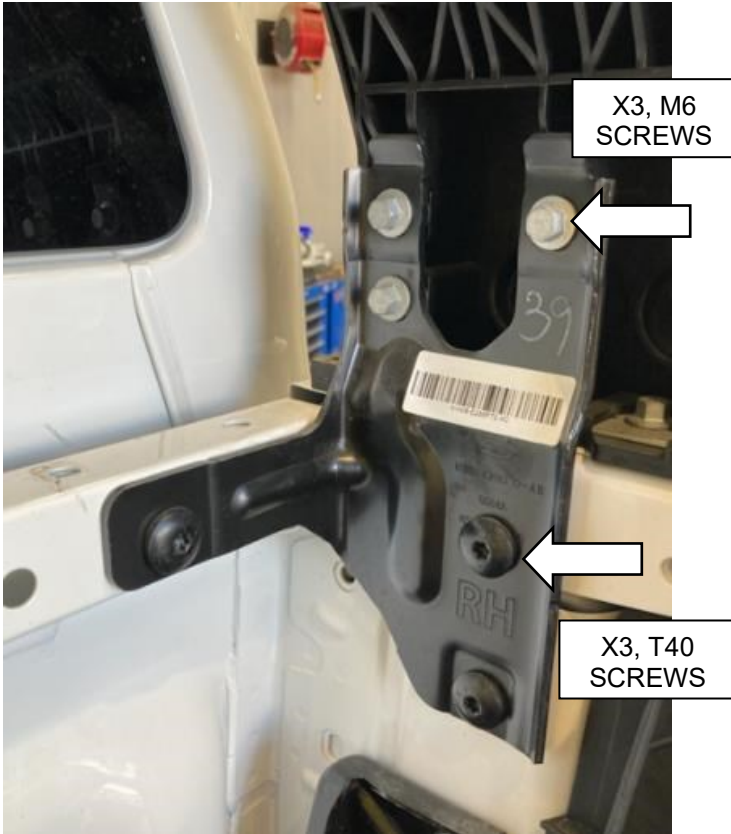
Move your fingers up the inside edge of moulding and keep pulling it firmly inboard, until all 12 clips are dislodged and plastic cover can be removed.

**Do both sides.**

Sailplane mouldings can be discarded if the customer does not want them after fitting a canopy.



12 CLIP FASTENERS TO COVER MOLDING

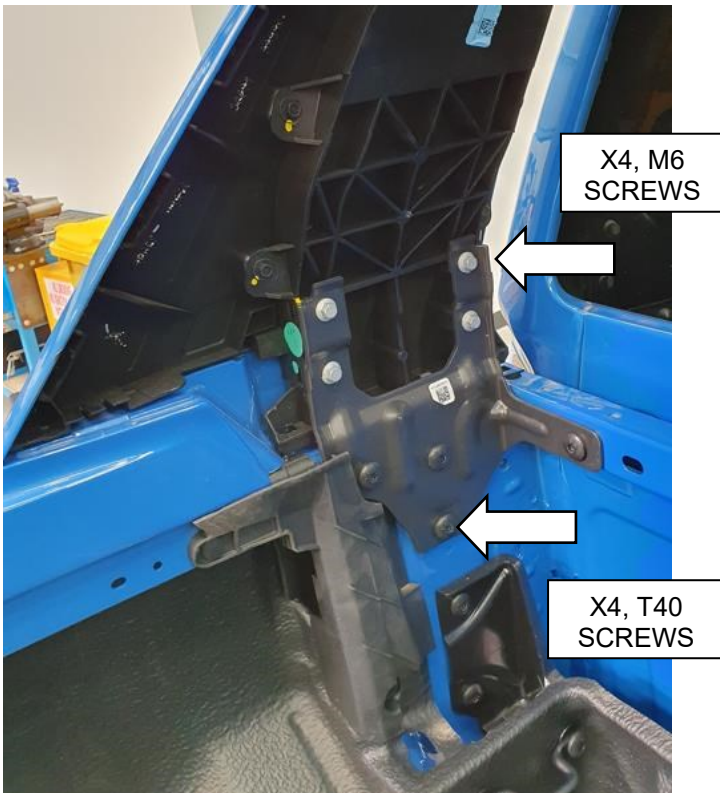


4.2) **For Wildtrack only.**  
Using a 10mm socket, remove x3, M6 screws from the right-hand upper portion of the front corner Sailplane bracket.

Using a T40 torx drive remove the x3, M8 screws from the lower portion of the Sailplane front corner bracket.

(RH Shown)

**Do both sides.**

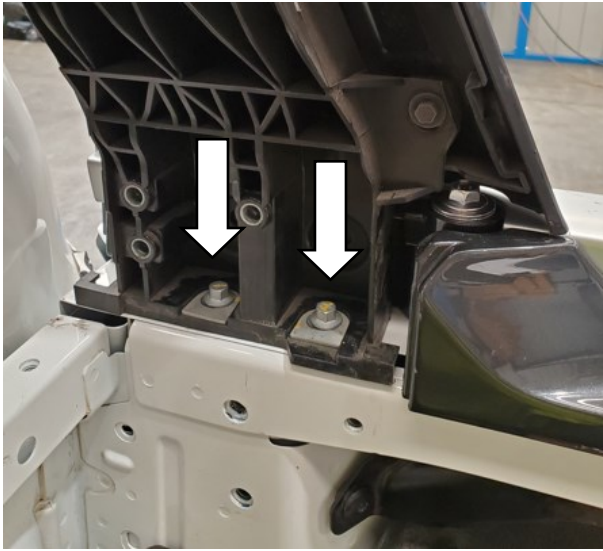


**For Amarok only.**  
Using a 10mm socket, remove x4, M6 screws from the right-hand upper portion of the front corner Sailplane bracket.

Using a T40 torx drive remove the x4, M8 screws from the lower portion of the Sailplane front corner bracket.

(RH Shown)

**Do both sides.**



4.3) Using a 10mm spanner, remove two M6 screws from right-hand front Sailplane moulding, where it attaches to the top of the tub.

**Do both sides.**

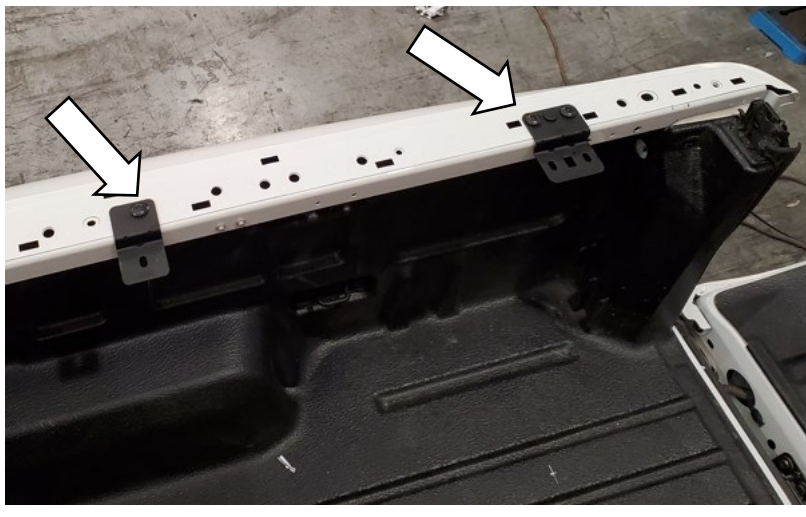
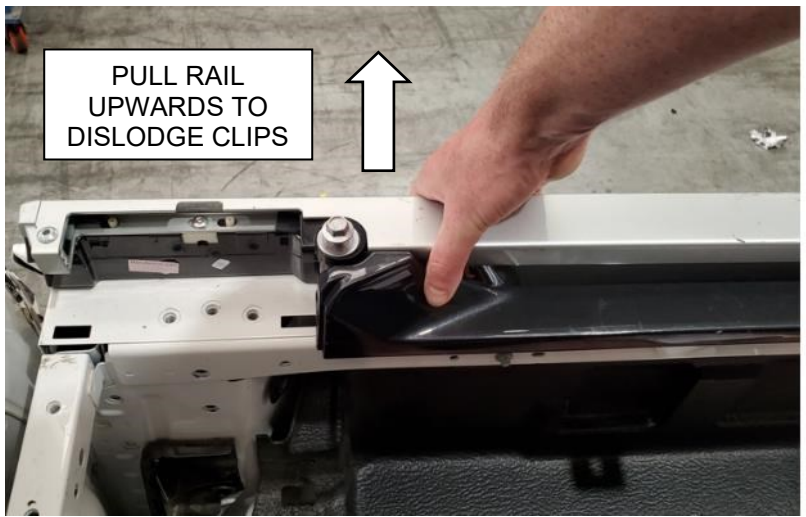
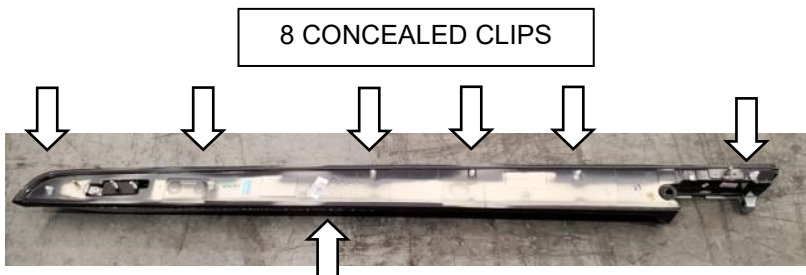


4.4) The Sailplane hoop can now be lifted off tub and removed. Put the Sailplane hoop to one side. Discard it, if the customer no longer wants to keep it after fitting a canopy.



4.5) **For Wildtrack only.** Using a 13mm spanner remove the long M8 bolt from front right-hand side rail of sailplane.

**Do both sides.**



4.6) **For Wildtrack and Amarok.**  
The sailplane side tub rails are held in place by eight concealed plastic clips.

**!! IMPORTANT !!**

**Collapse the clips from the underside of the tub lip first using long nose pliers to avoid bending the sheet metal.**

Hold the front of the sailplane rail and pull firmly directly upwards until clips start to dislodge.

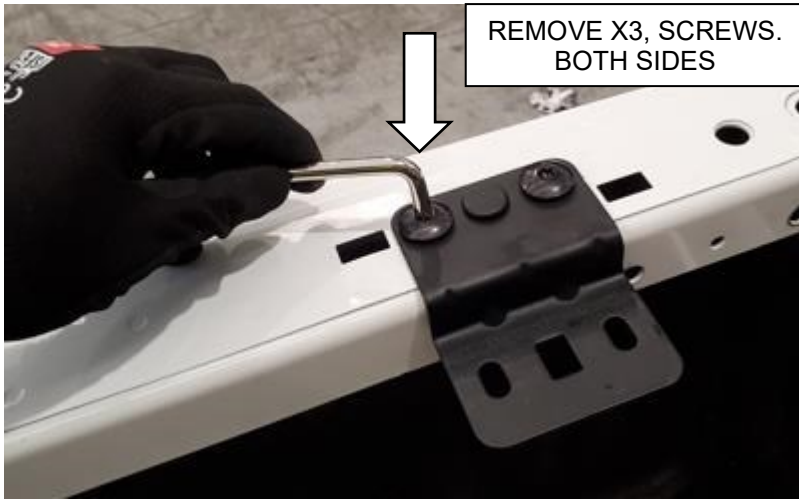
Keep moving towards the rear of tub and pull all clips free from top of tub rail surface.

**Do both sides.**

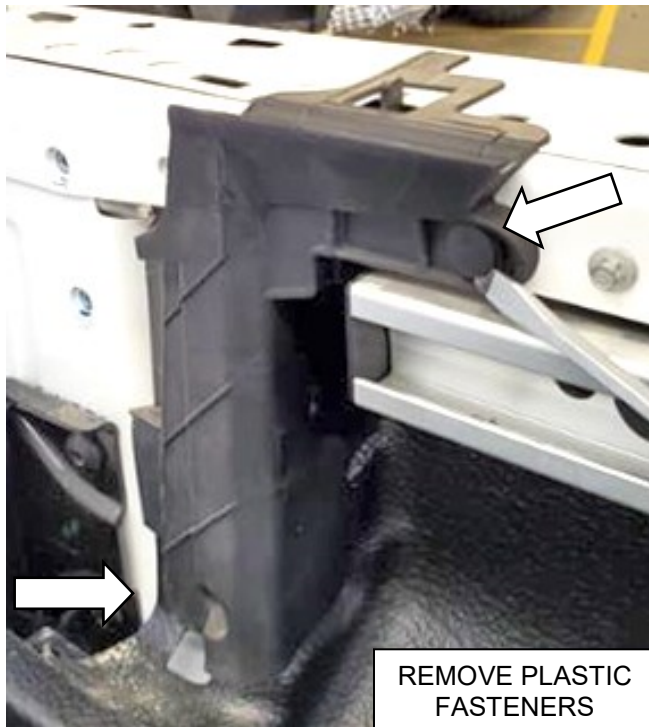
4.7) Locate two tonneau cover mounting brackets on top of the right-hand tub rail.

Using a T40 torx drive, undo the screws on top of tub rail. Remove all screws and brackets from tub lip.

**Do both sides.**



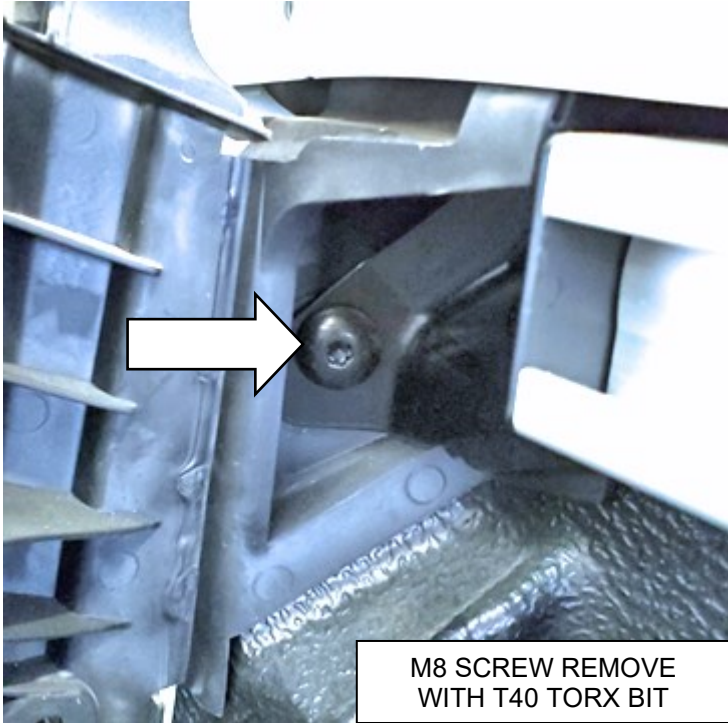
REMOVE X3, SCREWS.  
BOTH SIDES



REMOVE PLASTIC  
FASTENERS

4.8) Locate and remove two black plastic push-in fasteners on the rubber mouldings with flat nose screw driver.

**Do both sides.**



4.9) Pull open one side of moulding to expose the M8 T40 screw behind. Use a T40 torx drive to the remove screw.

**Do both sides**

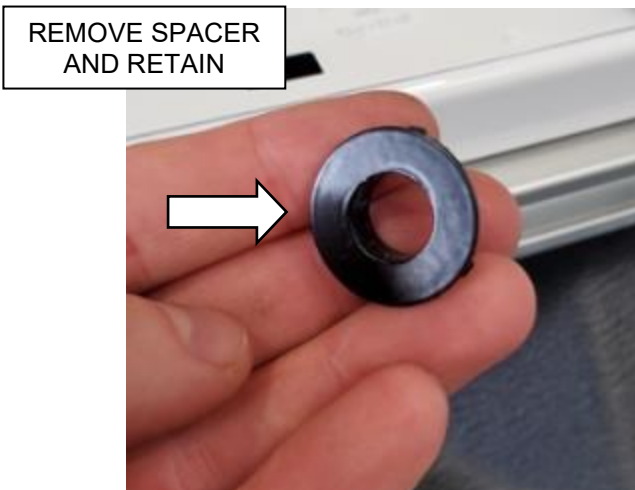
**Retain screw to for refitting of the CMS mount rails**



4.10) Pull out moulding from behind steel bracket. There will be a steel spacer held in the moulding. **Remove spacer from moulding and retain for refit of the CMS mount rails**

Discard the rubber moulding if not required by the customer.

**Do both sides.**





- 4.11) On the right-hand side the electrical connector needs to be tucked away up inside the front pillar cavity of the tub. Remove the clip and fastening strap from the tub and tuck it up into the front tub pillar cavity.

**The vehicle's tub is now clear of all tonneau cover and sailplane hardware.**

## **SECTION 5: RE-FITTING THE CARGO MANAGEMENT SYSTEM (CMS) TRACK**



- 5.1) Before reinstalling the CMS track system to the tub, it is best to undertake the sealing steps in canopy fitting instructions in relation to installing 668PB033 foam sealing blocks **(Refer to Canopy fitting instructions specific to this step).**







5.2) Using a 7mm socket and the retained five M6 screws, reinstall the cargo utility track onto right-hand side of tub.

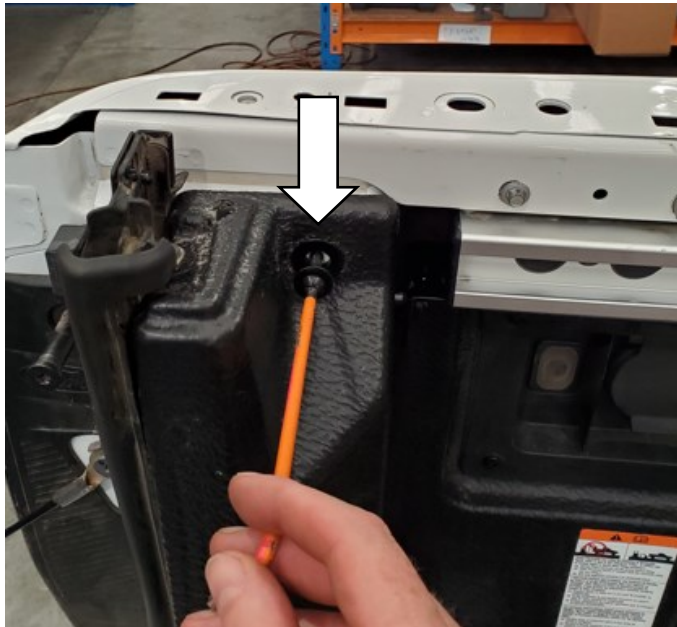
**Tighten screws to 9 Nm.**

5.3) Reinstall the three black plastic cover caps to mounting holes in cargo utility track.

5.4) Reinstall the rear T40 torx M8 screw for the rear bracket.

**Tighten to 9 Nm.**

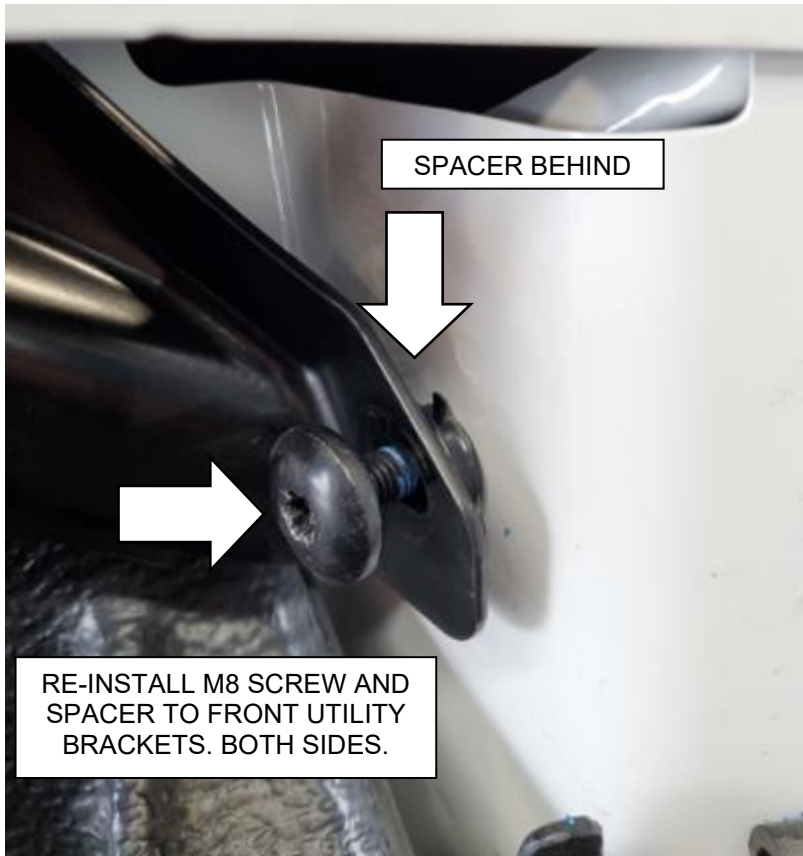
**Do both sides.**



5.5) Using T27 torx drive, reinstall the rear M6 screw through the rear corner of the bed liner.

**Tighten to 9 Nm.**

**Do both sides.**



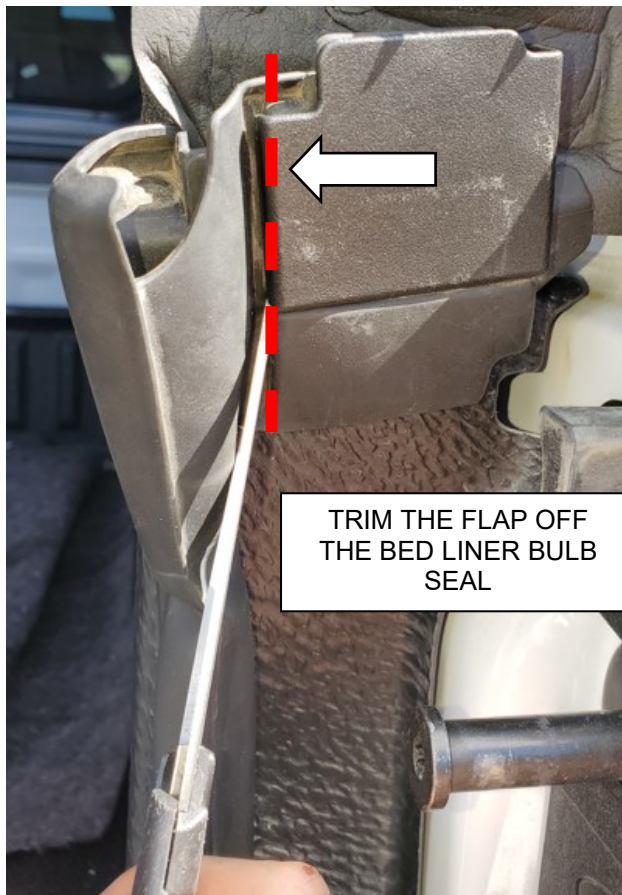
5.6) Using T40 torx bit and retained M8 screw, refasten the screw with the retained steel spacer behind bracket, re-install screw and spacer.

**TIP:**

To avoid losing the spacer down behind the bed liner, place some masking tape under the bottom edge of the bracket and the tub.

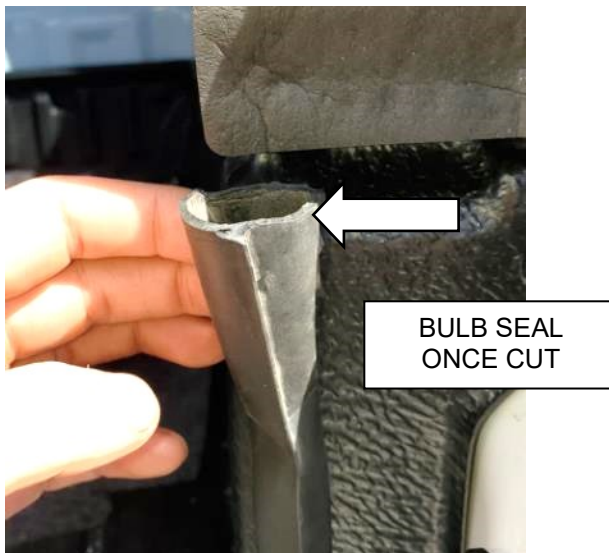
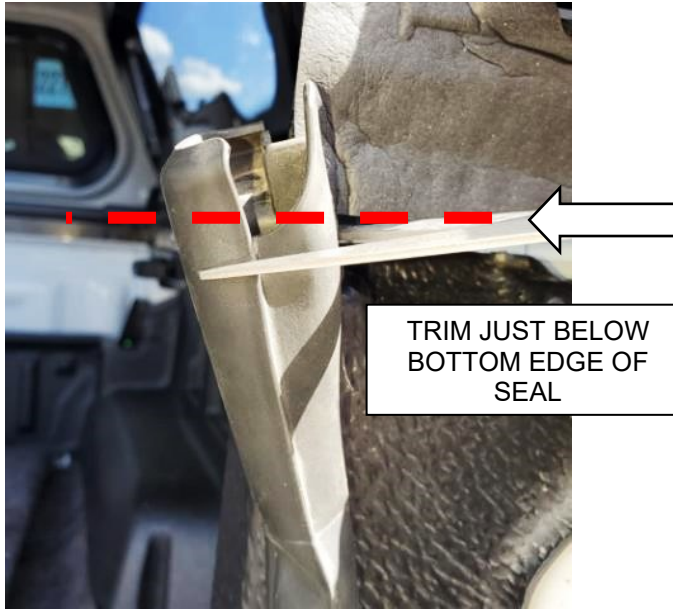
**Tighten screws to 9 Nm.**

**Do both sides.**



5.7) **For Wildtrack and Amarok.** Locate the bulb seal at the tailgate end of the bed liner. Cut it as shown.

**Do this on both sides.**



5.8) Trim the top of seal in location shown so it then has a uniform cross-sectional shape.

**Do this on both sides.**



5.9) Reinstall sliding securing tie down cleats, to complete reinstallation of the CMS utility track on both sides.

**Tub preparation is now complete, ready to now follow canopy fitting instructions.**