

## MERCEDES-BENZ X-CLASS 2018

### ROLLER DRAWER INSTALLATION TO ADR 34/02

1355 Series: Vehicle specific instruction and drawing

**Optional Extension Floor and Side Floor Kits are supplied separately.**

#### NOTE:

Do not elongate any holes

Read and understand all instructions before proceeding

Tub liner must be removed for correct fitment of side floors

*Throughout these instructions \*rear refers to \*rear of vehicle \*front refers to \*front of vehicle.*

**INSTRUCTIONS ARE AVAILABLE FROM ARB STOCKISTS.**

**SECTION 1:- FRAME PREPERATION.....General Instructions- Supplied In Drawer Module**

**SECTION 2:- VEHICLE SPECIFIC INSTALLATION.....This Instruction**

**SECTION 3:- REASSEMBLY.....General Instructions- Supplied In Drawer Module**

**SECTION 4:- OPTIONAL STACKER DRAWER.....General Instructions- Supplied In Drawer Module**

**SECTION 5:- CUSTOM & INDIVIDUAL FIT.....General Instructions- Supplied In Drawer Module**

## 2 ) VEHICLE SPECIFIC INSTALLATION:

– Ensure you have completed General Instructions Section One – Frame preparation before following this vehicle specific instruction.

The General instructions are supplied with the Outback Solutions Drawer Modules and are also available from your ARB stockist.

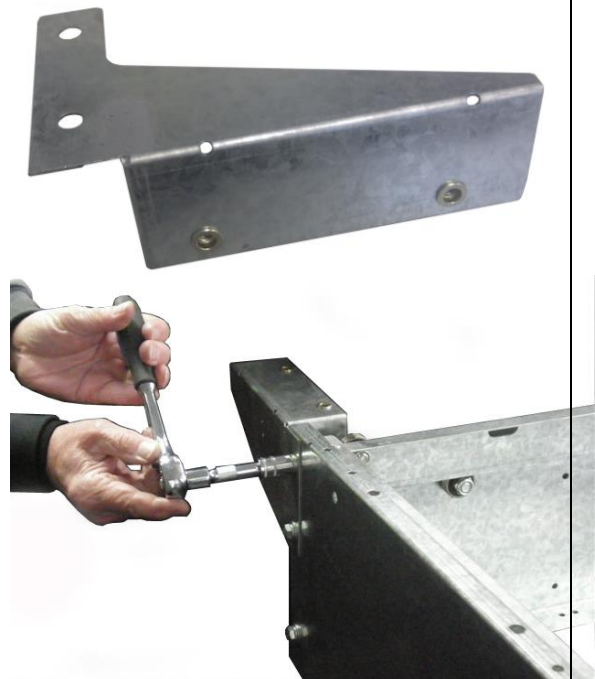
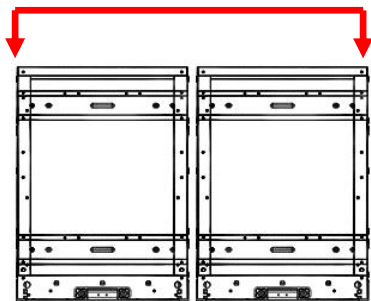
**2.1/-** With an assistant, carefully lift the frame into the vehicle taking care not to scratch the vehicle. Ensure the frame is oriented so the drawers will be accessible from the rear of the vehicle.

**2.2/- If fitting the optional side floor for drawer modules,** attach front floor support wing brackets now.

Bolt the two brackets onto **front** outer corners of drawer frame by removing and reusing the existing two top outside 8mm hexagon head bolts, spring and flat washers from the **front** of drawer frame.



Skip this step if not fitting optional side floor.



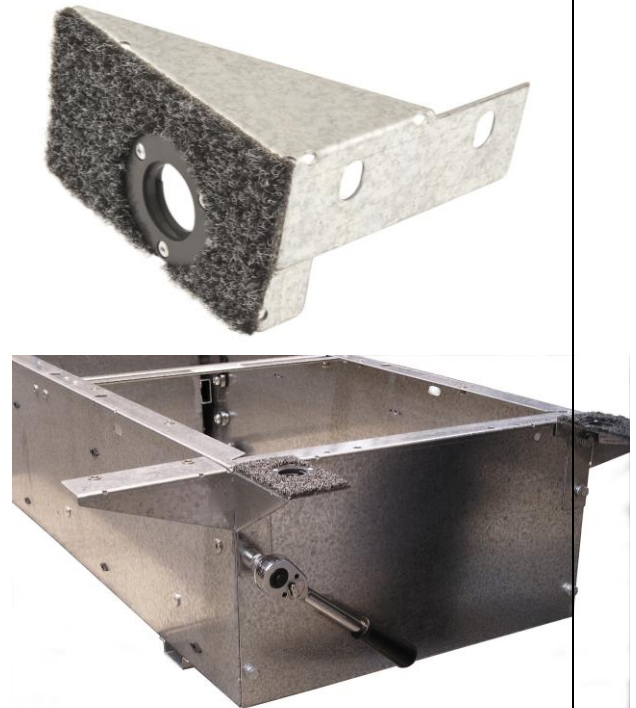
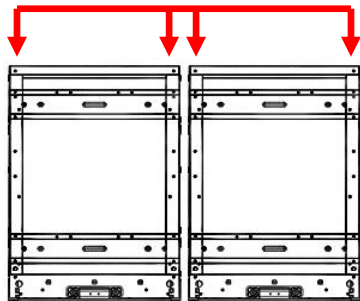
# Vehicle Specific Instructions

**2.3/-If fitting the optional floor extension for drawer modules, attach front floor extension support brackets now.**

Bolt two brackets to each drawer modules **front** inner and outer corners by removing and reusing the existing two top 8mm hexagon head bolts, spring and flat washers from the **front** of drawer frame.



Skip this step if not fitting optional floor extension.



## **2.4/-Side bracket installation:**

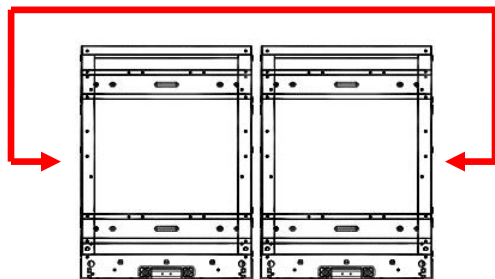
Bolt side brackets onto outsides of bearing channels using four (4) 6mm x 20mm hexagon head bolts.

### Drawer with Fixed Floor Modules:

Loosely fasten two of the 6mm bolts into the two captive nuts inserted in outsides sides of bearing channels, slip the two top holes in side bracket over bolt heads, from inside of bearing channels fasten bottom of side bracket into the two captive nuts in bracket.

### Drawer with Roller Floor Modules:

From inside of bearing channels fasten top and bottom of side bracket into the four captive nuts in bracket.



## Vehicle Specific Instructions

### 2.5/-Side Fill Panel fixing position:

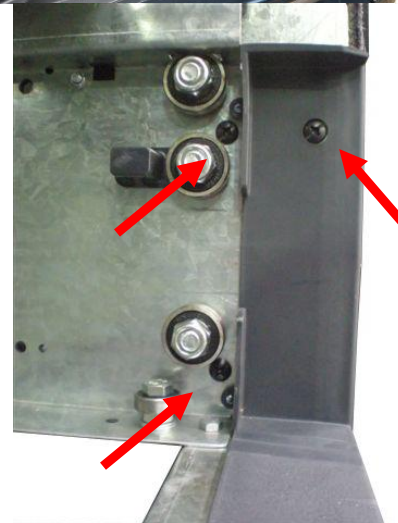
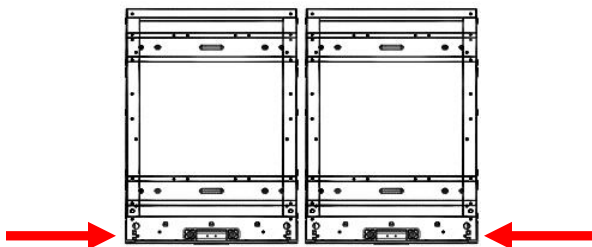
Position side fill panel onto outside of bearing channels by pushing/positioning side panels in from **front** of vehicle this allows carpet to fold back neatly against interior trim of vehicle.

### Side Fill Panel fastening:

Fasten Side Fill Panel to outside of bearing channel using three (3) 6mm x 20mm black round head set screws.

**First** fasten through **top** hole in plastic fascia panel into captive nut in Side Fill Panel.

**Second**, fasten through holes in outside bearing channel located **top** and **bottom** of front bearings.



### 2.6/-Side Floor installation:

Using a 4mm hexagon head Allen key....

**First** fasten fixed floor section of floor onto Front Wing Panel and Side Bracket using four (4) black countersunk set screws.

**Second** clip the **front** locator clips on the underside of the removable floor section into slots in side bracket, fasten **rear** end down using latch.



### 2.7/- Positioning frame in vehicle – Front to rear.

**If fitting an optional Extension Floor**, fit extension floor panels and push frame forward until Extension Floor panels just touch against \*front of vehicle tub.

**If NOT fitting an extension floor**, position the front of the drawer module 215 mm from a flat section of the front of the tub.

### 2.8/- Positioning in vehicle – Center Left to right.

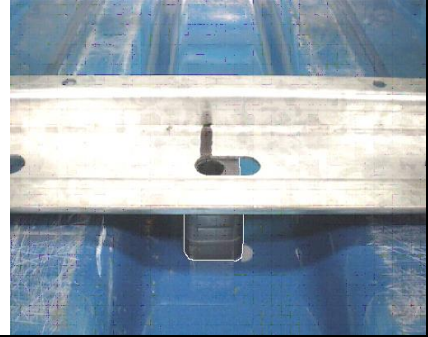
**If fitting an optional Side Floor**, maneuver assembly to ensure the gap between side floor and tub walls is equal on both sides- this centers the frame in the vehicle.

**If NOT fitting an optional Side Floor**, position the assembly central in the vehicle. Confirm for equal measurements on each side between the assembly and vehicle body.

## Vehicle Specific Instructions

**2.9/-** Use measurements from item “A” , “B” , “F” and “G” of the *vehicle specific diagram* for this step. The diagram is at the end of this instruction.

With the frame in position, place the 2 sets of **12mm (Front - A) & 20mm (Rear - B) spacer** blocks (“A” & “B”) assembled in step 1.9 lengthways in valley of floor ribs and under the marks on the mount rails from step 1.6 (“F” & “G”).



**2.10/-** Check frame is central in vehicle and where fitted, optional Extension Floor and site floors are free to operate and equally spaced to the vehicle body.

**2.11/-** Ensure all clear under vehicle floor before drilling any holes. It is the responsibility of the fitter to ensure that drilling through the vehicle floor will not damage vehicle components. Check for items such as fuel lines, break lines, fuel tanks, spare tires and non standard accessories.

**2.12/-** Using a short body electric or battery powered drill and 10mm drill bit drill straight down through holes marked mount rails, through plastic spacers to underside of vehicle.

**2.13/-** Remove **all** drill swarf from vehicle tub and apply a rust preventive coating to drilled holes from underside of vehicle.

**2.12/-** Bolt frame down through drilled holes using **four (4) M10x50mm** bolts, **M10x70x40** flat plates inside the vehicle and weatherproof plates and Nyloc nuts on underside of vehicle.

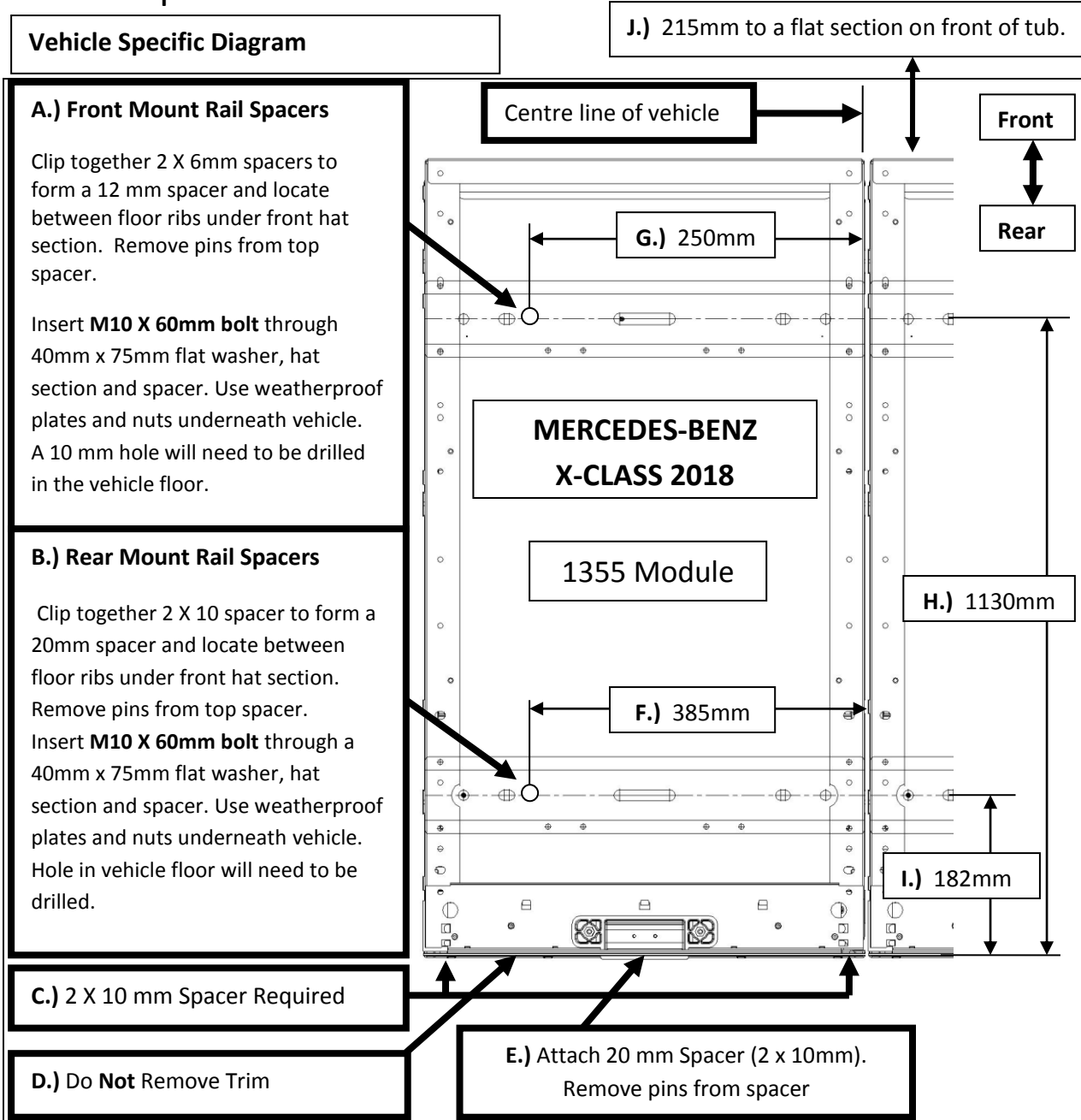


Inside Vehicle

Under Vehicle

**2.14/-** Return to **General instructions step 3** to complete installation. The **General instructions** are supplied with the **Outback Solutions Drawer Modules** and are also available from your **ARB stockist**.

# Vehicle Specific Instructions



<b>MERCEDES-BENZ X-CLASS 2018+</b>			
<b>A.)</b>	<i>12mm Spacers</i>	<b>F.)</b>	<i>385 mm</i>
<b>B.)</b>	<i>20mm Spacers</i>	<b>G.)</b>	<i>250 mm</i>
<b>C.)</b>	<i>20mm Spacers</i>	<b>H.)</b>	<i>1130 mm</i>
<b>D.)</b>	<i>Do <b>Not</b> Remove Trim</i>	<b>I.)</b>	<i>182 mm</i>
<b>E.)</b>	<i>20mm Spacers</i>	<b>J.)</b>	<i>215 mm</i>

**Caution:** - Confirm measurements against vehicle and check for items such as fuel lines, break lines, fuel tanks, spare tires and non standard accessories before drilling holes in vehicle. It is the responsibility of the fitter to ensure that drilling on the vehicle will not damage vehicle components. Always check Roller drawers clear tailgate when down and with minimum 20kg weight in drawers.