



HardLid

Owner's Manual



Installer to complete detail log on page 26 before giving owner's manual to customer

Table of Contents

Operator safety	4
Load Safety	4
Understanding & operating HardLid	5
Opening HardLid with top mounted load	6
Closing HardLid with top mounted load	6
HardLid components location	7
Removing HardLid	8
Storing HardLid after removal	11
Reinstalling the HardLid	12
HardLid adjustment	16
Internal emergency escape lever	19
Internal Light	19
Fitting accessories	
Fitting HardLid cross bars & roof racks	20
Fitting vehicle mounted roof top tent	21
Cleaning and maintenance schedule	22
Trouble shooting guide	23
Premium electronic upgrade kit	24
Heavy load strut upgrade kit	25
HardLid detail log	26

Operator safety

- Please read these instructions carefully and make yourself familiar with HardLid before using it.
- Always keep the instructions in a safe place for future reference.
- HardLid Premium has electrical components, cables, and connections. Do NOT submerge or use pressure washer on the inside of the HardLid. Do NOT crush or bend electrical cables. Electricity is hazardous and exposure to water can cause harm to the user or can permanently deteriorate electrical components. See Care and Maintenance section for washing HardLid.
- Be aware of pinch points. Moving parts can cause severe personal injury. Watch your hands and fingers when performing the operations detailed in this guide.
- Do NOT close HardLid with people or animals inside rear load tray.
- Do NOT drive vehicle when HardLid is in the open position (unless DBF Brackets are installed).
- Do NOT exceed the load specification of HardLid. Maximum open load is 25kg (Gross weight), Maximum closed load is 150kg (Gross weight).

Load safety

- Maximum closed load capacity of HardLid with approved roof rack/load carrying systems is 150kg (Gross weight)
- If loaded, the lids standard struts will not hold the lid in an open position unassisted.
- Lids with strut upgrade kit installed can be loaded up to a maximum of 25kg (Gross weight) and remain open unassisted (see upgrade kit details on page 24).
- Ensure roof bar system is fitted correctly in accordance with accessory fitting instruction.
- Ensure load is evenly distributed with the center of gravity as low as possible.
- Always secure loads with quality straps. Elastic straps are not suitable for securing loads.
- If the HardLid has roof bars and/or other accessories fitted to roof bars, ensure there is enough clearance for vehicle and surrounding when opening or closing.

- The handling characteristics of a vehicle will change when the carrier system is fitted and especially when it is loaded. Driving techniques should be altered to allow for these changes, reducing speed, especially on bends, and allowing for longer braking distances.

Understanding and operating HardLid

Locking

- Standard model (manual) – insert key into handle lock and turn
- Premium model (central locking) – press lock function on key fob

Unlocking

- Standard (manual) – insert key into handle lock and turn
- Premium (central locking) – press unlock function on key fob
- Note: Some vehicles will automatically lock after a short period of time. A repeat press of key fob may be required if this occurs to unlock your HardLid again.

Opening

- Turn the handle and push up with your hand.

Closing

- Ensure the locking latches on both sides have engaged by applying upward pressure.
- Do not slam the HardLid. Slamming results in more force being required than necessary to close the lid due to the large volume of air exiting the rear of the vehicle.

CAUTION: DO NOT DRIVE WHEN HARDLID IS UNLATCHED. FAILURE TO ENGAGE LATCHES CAN RESULT IN HARDLID OPENING WHILST IN TRANSIT AND DAMAGE TO THE PRODUCT COULD OCCUR VOIDING WARRANTY.

Opening HardLid with top mounted load

CAUTION: WE DO NOT RECOMMEND OPENING THE HARD-LID WITH MORE THAN 25KG TOP LOADED. ADDITIONAL LOAD MAY RESULT IN ADDITIONAL UPWARDS AND DOWNWARD FORCE BEING APPLIED WHICH CAN RESULT IN PERSONAL HARM AND/OR DAMAGE TO THE HARDLID.

Note: Lids with strut upgrade kit installed can be loaded up to a maximum of 25kg (Gross weight) and remain open unassisted (see upgrade kit details on page 24).

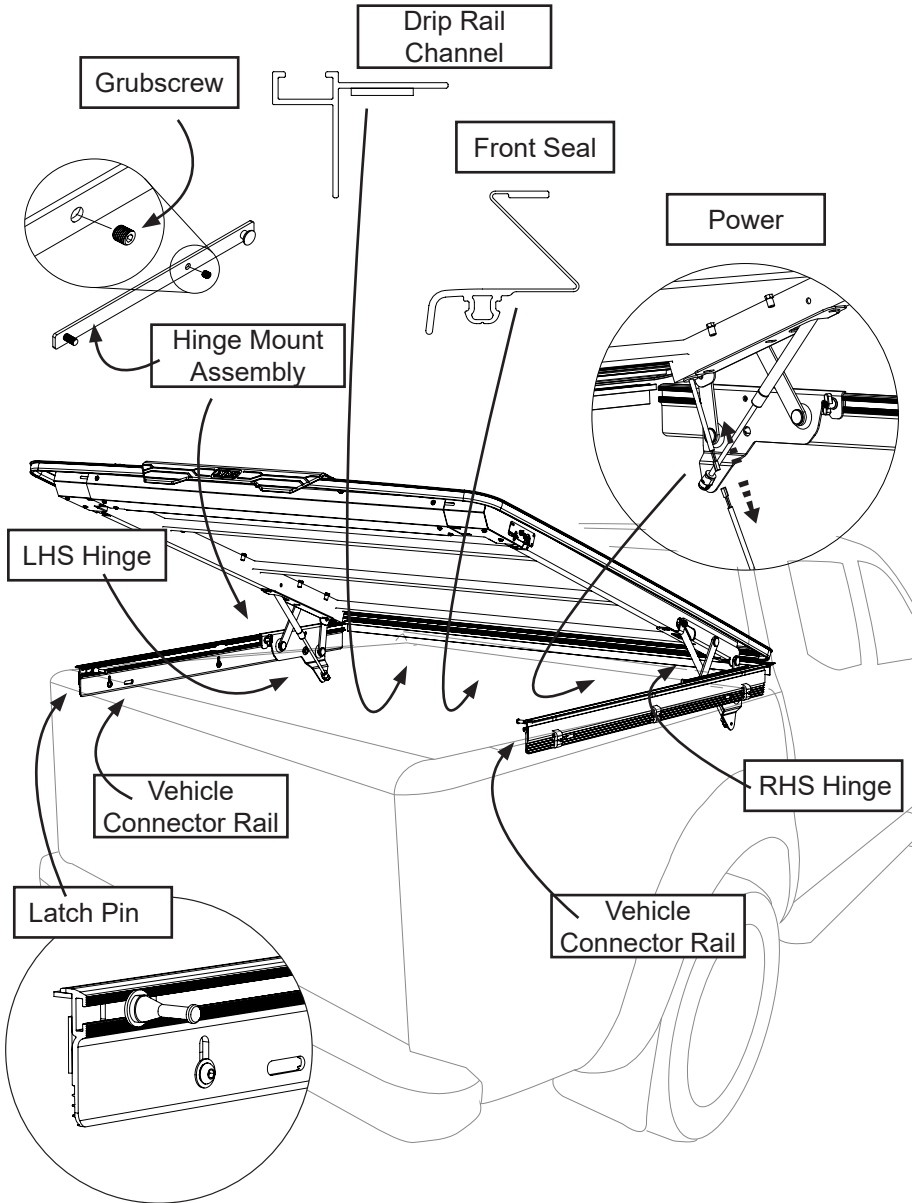
IN THE EVENT THAT ACCESS UNDER THE HARDLID IS REQUIRED, THE FOLLOWING STEPS MUST BE FOLLOWED:

- While applying upward lift with one hand on rear edge of HardLid use other hand turn the handle to unlock the HardLid.
- Then immediately put both hands on rear edge of HardLid and push upwards.
- Ensure to support HardLid in open position by continuing to hold rear edge of HardLid.
- Gas struts will provide limited support with weight exceeding 25kg.

Closing HardLid with top mounted load

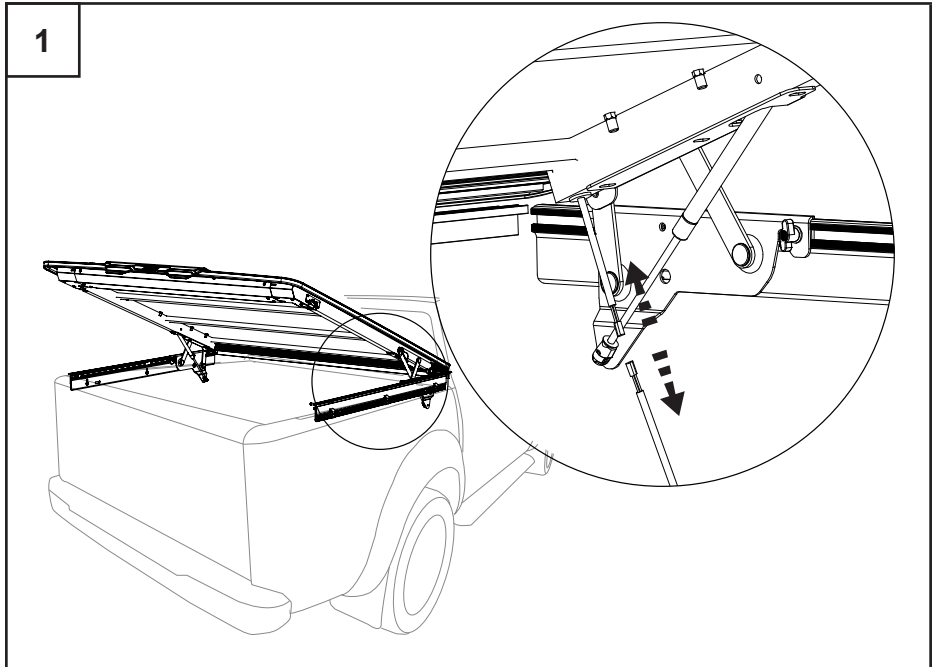
- Ensure to support HardLid with both hands-on rear edge while closing. Do not allow HardLid to free fall.
- Do not slam the HardLid. Slamming results in more force being required than necessary to close the HardLid
- Ensure the locking latches on both sides have engaged by applying upward pressure.

HardLid components location



In producing this document ARB NZ Ltd. has relied upon information and representations made by third party suppliers and to the extent permitted by law ARB NZ accepts no responsibility for any losses, faults or damage caused to the vehicle or accessory components that occur due to a failure to properly follow these instructions.

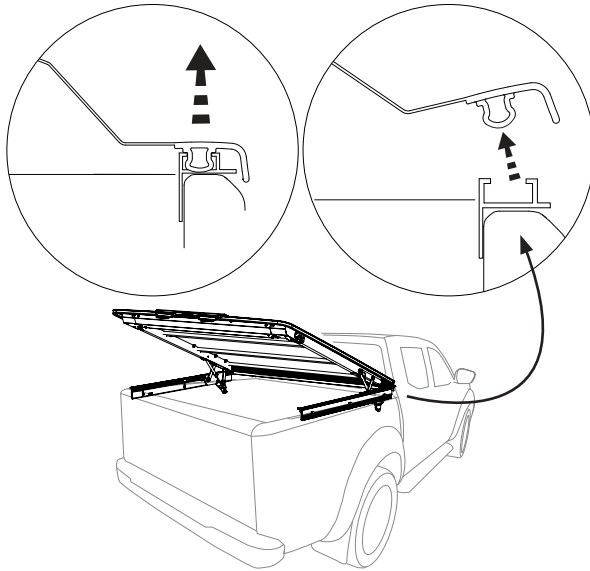
Removing HardLid



**THIS STEP IS FOR HARDLID PREMIUM MODELS ONLY
! IMPORTANT DISCONNECT POWER FIRST !**

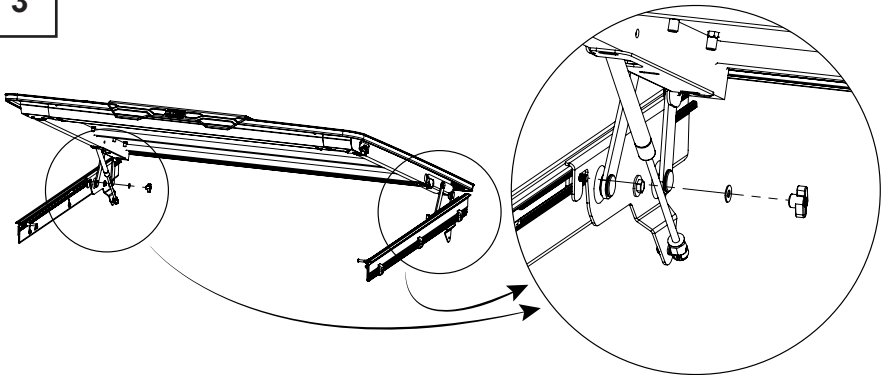
- Carefully examine the LHS / RHS front corners on the underside of the lid to locate wiring loom.
- Unplug the wiring loom from vehicle before removing HardLid.
- If a sport bar with high stop light is installed on your vehicle, unplug the high stop wiring loom before commencing removal process.

2



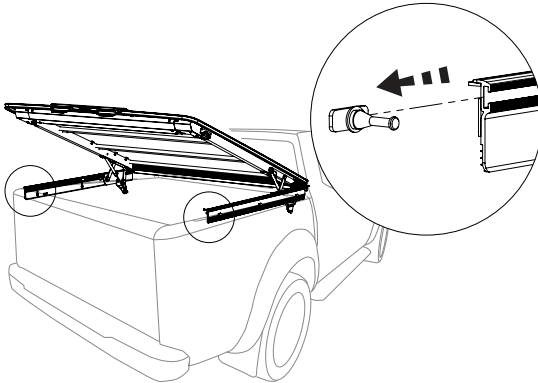
- Disengage the front seal from drip rail channel.

3



- Remove thumb screw and washer from hinge as shown in diagram above. Repeat for hinge on opposing side.

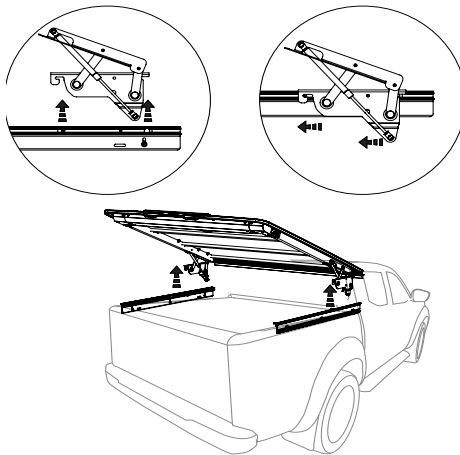
4



OPTIONAL STEP

- Loosen the latch pin using a 17mm crescent.
- Remove the pin and mounting plate.

5



IMPORTANT

- HardLid is heavy, recommend two people lift.
- Pull HardLid out of the location lug then slide it out. Be careful not to damage lid or sport bar if fitted during handling.

Storing the HardLid after removal

- The HardLid should either be placed on a flat surface or stored upright with the front edge facing down.
- Wrap the HardLid with a protective cloth or material such as bubble wrap, to protect it against marks, stains, scratches, and dents.
- Ensure that the front seal is tucked away safely.
- If you have a HardLid Premium, ensure that the electrical cables are tucked away safely.
- Keep sharp objects away from the HardLid as these may scratch the body, or puncture the front seal causing water ingress after the HardLid is reinstalled.

Reinstalling the HardLid

1

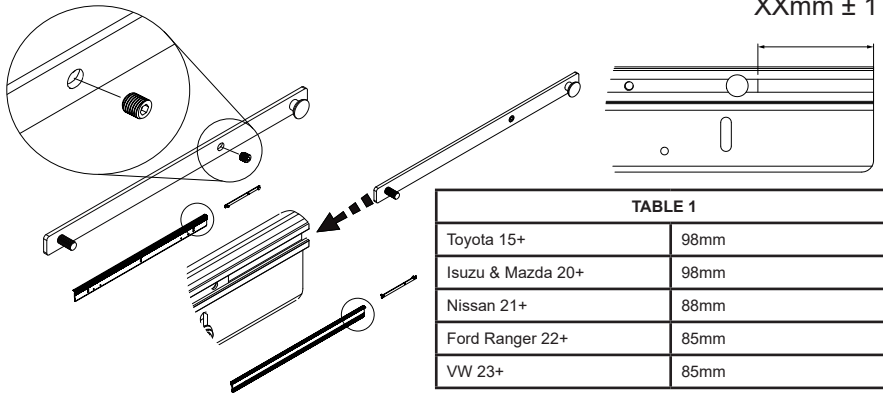


TABLE 1

Toyota 15+	98mm
Isuzu & Mazda 20+	98mm
Nissan 21+	88mm
Ford Ranger 22+	85mm
VW 23+	85mm

- Check measurements before starting the re-installation process.

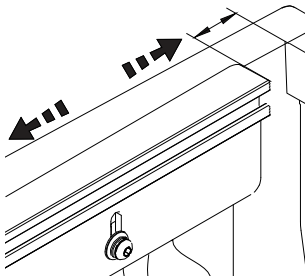
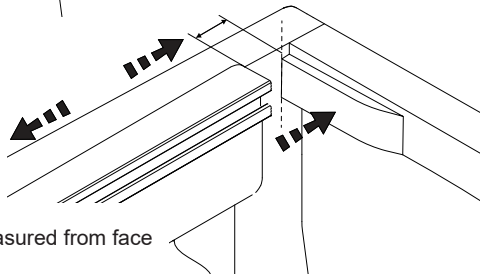


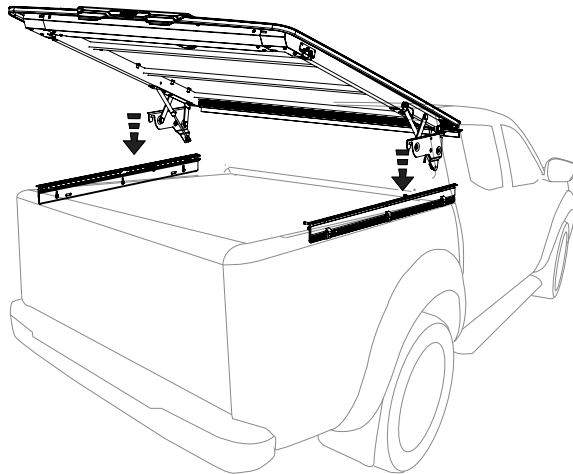
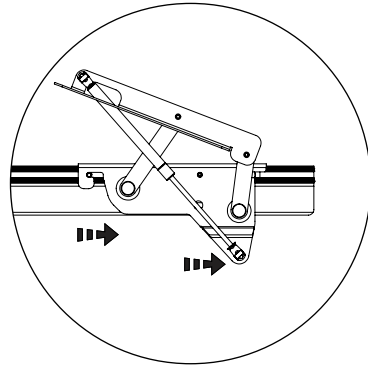
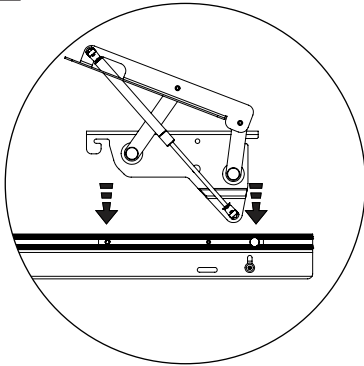
TABLE 2

Toyota 15+	50mm
Isuzu & Mazda 20+	50mm
Nissan 21+	50mm
Ford Ranger 22+	55mm
VW 23+	55mm



Note: Isuzu & Mazda 20+ measured from face indicated.

2

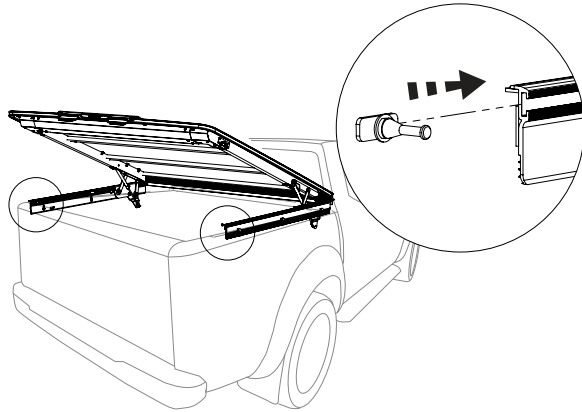


IMPORTANT

- HardLid is heavy, recommend two people to lift, unless sport bar is fitted then three people should lift.
- On HardLid Premium models, be careful not to crush wiring loom while re-installing HardLid.
- Ensure the HardLid is pushed hard forward against the location lug.

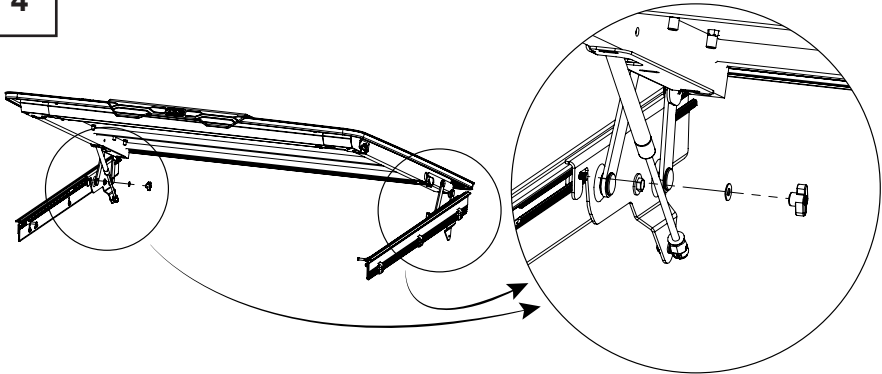
In producing this document ARB NZ Ltd. has relied upon information and representations made by third party suppliers and to the extent permitted by law ARB NZ accepts no responsibility for any losses, faults or damage caused to the vehicle or accessory components that occur due to a failure to properly follow these instructions.

3



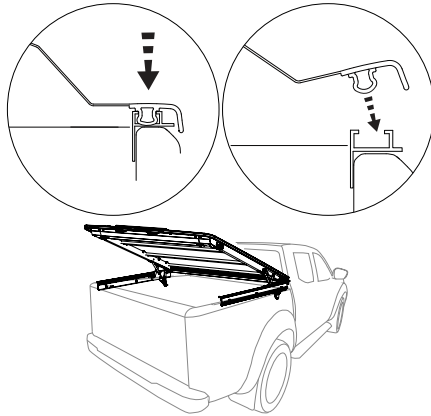
- Re-install latch pin assembly.
- Do not tighten as the location may need to be adjusted.

4



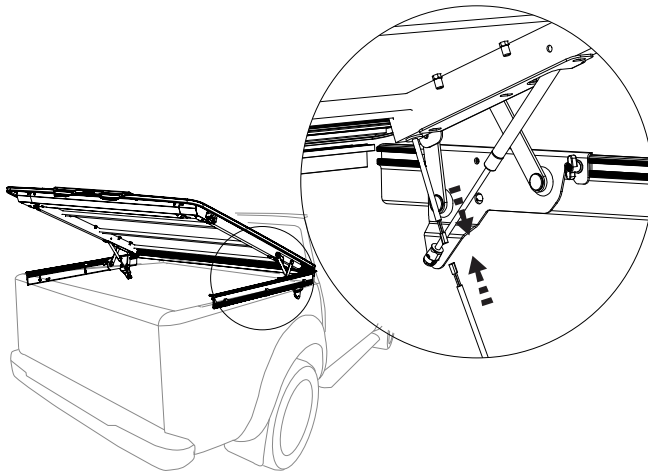
- **Reinstall wingnuts.**
- Before closing the HardLid ensure the latches do not collide with the latch pins.
- If the HardLid latches are going to collide see adjustment step 3 on pages 18.

5



- Ensure front seal is pushed in over the entire length of the drip rail channel.

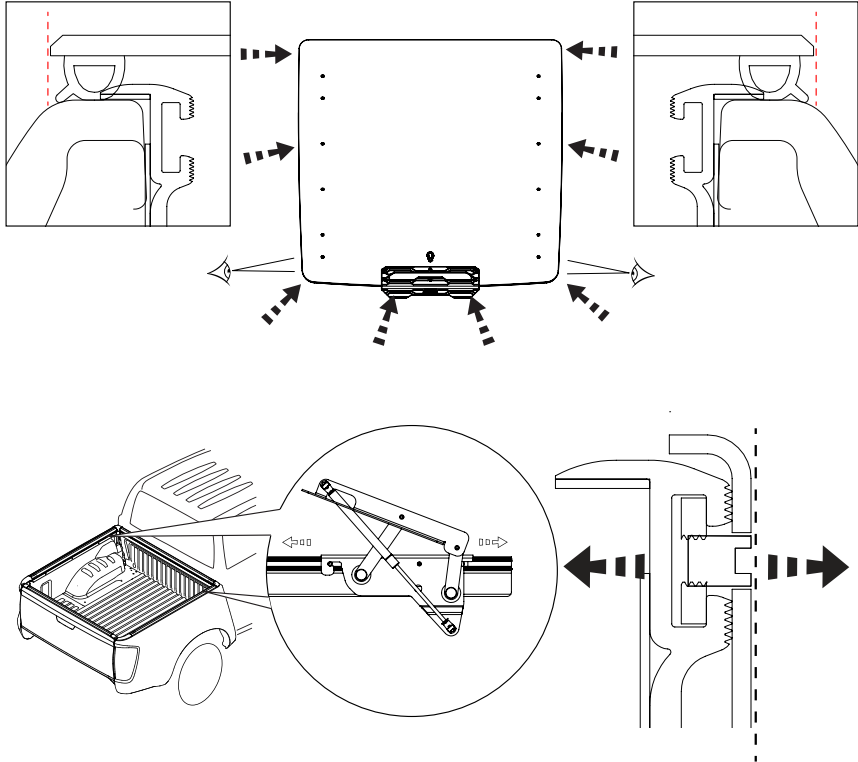
6



- Plug in the wiring loom (premium only).

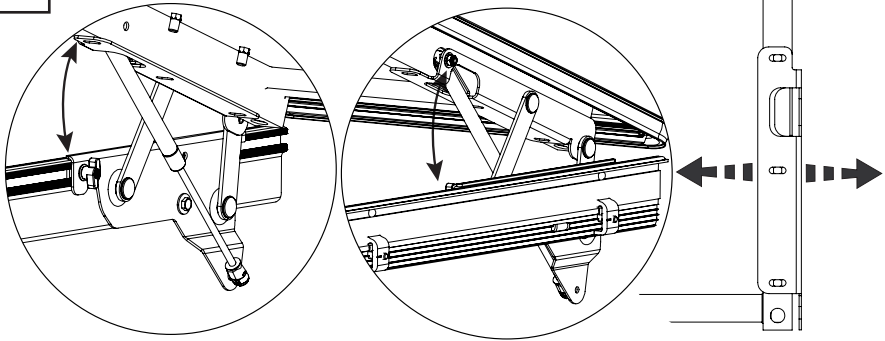
HardLid Adjustment

1



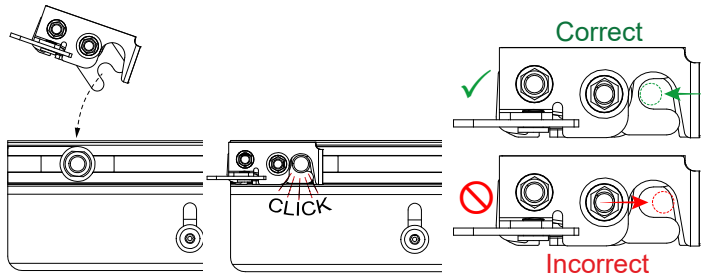
- Check the alignment between HardLid and vehicle.
- Loosen up the grub screw and wing knob. HardLid can then be adjusted backwards or forwards by simultaneously moving both hinges.
- If HardLid is skewed, LHS hinge and RHS hinge need to be adjusted individually.

2

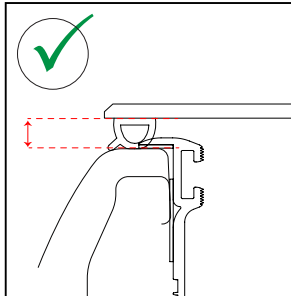
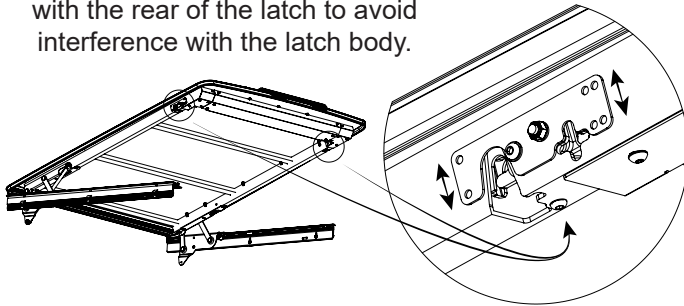


- Check if hinges collide with vehicle connector rails.
- Hinge location can be adjusted inward and outward by loosening the screws.

3

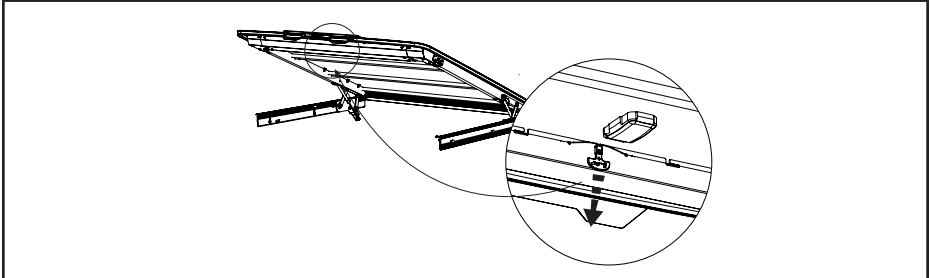


For best results align the pin with the rear of the latch to avoid interference with the latch body.



- Check to see that the weather seal is evenly contacting the vehicle surfaces around the perimeter of the vehicle tub.
 - If necessary adjust the latch position using the adjustment screw.
- Note: If latch plate has been riveted into position the rivets will need to be drilled out and re-riveted using alternative holes. Ensure the latch fasteners are not tightened.
- Aim for 15-18mm gap between vehicle surfaces and lid.
 - Once latch position is confirmed, tighten latch fasteners to **6NM**.

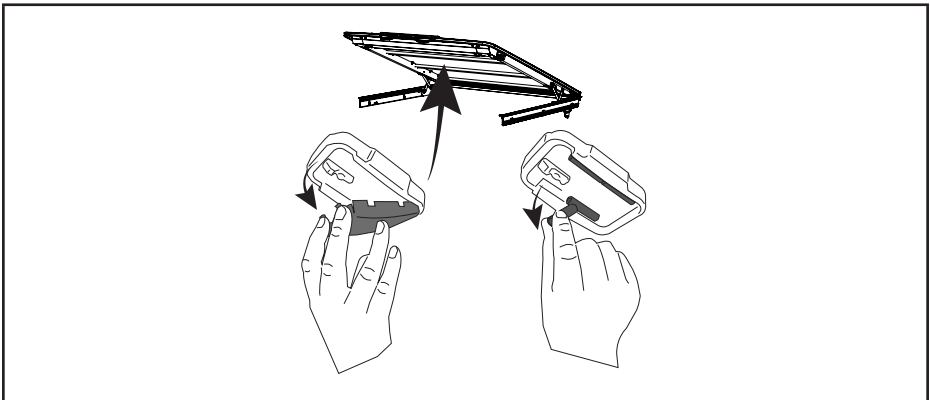
Internal emergency escape lever



IMPORTANT

- It is not recommended that the lid is inspected from inside the tray unless another person is present to assist.
- Locate the escape lever on the inside rear edge of the HardLid frame (as shown in diagram) and pull tab to open.

Internal light



- The internal light comes installed with HardLid Premium kit and is not removable.
- Light is powered by four AAA batteries.
- To replace batteries, remove cover as shown in diagram above and place batteries in space provided.
- The light is manually switched on, so remember to turn it off to avoid batteries going flat.

Fitting Accessories- Cross Bars & Roof Racks

- Use only approved accessories specifically designed for track channel mounting with dimensions 21 mm wide x 5 mm thick. Using other accessories may affect the correct function of the HardLid and void warranty.
- Always load roof racks and roof bars in accordance with their provided specifications.
- Always secure loads with quality straps. Check and retighten loads during the journey. Elastic straps are not suitable for securing loads.
- Loaded roof rack systems will affect the vehicle's crosswind sensitivity, cornering, and braking characteristics. Driving techniques should be altered to suit by reducing corner speed and increasing braking distance.
- Ensure approved roof rack/load system is fitted.
- Maximum closed load capacity of the HardLid with approved roof rack/load carrying systems is 150 kgs.
- Maximum open load capacity of the HardLid with approved roof rack/load carrying systems is up to 25 kgs. Please note standard struts will assist to open lid but may not remain open unassisted. Gas strut upgrade kits are available for purchase through your distributor (see upgrade kit details on page 24).
- Ensure load is evenly distributed with the center of gravity as low as possible.
- Always observe local safety laws for long/overhanging loads.
- If HardLid has approved roof rack/ load carrying system attached and load is present, ensure enough clearance to vehicle and surroundings when opening or closing.
- Do NOT modify, drill or attach items to any part of the HardLid. Only use genuine HardLid service parts and/or accessories.

Fitting Accessories- Rooftop Tent

- Refer to “Fitting HardLid Cross Bars/Roof Racks” section for mounting cross bars (if applicable) with Tent application
- Ensure to space cross bars to the recommend distance apart as specified by Tent Manufacturer.
- We recommend that a third cross bar be installed to ensure required load spread, and to reduce floor deflection
- Ensure to mount tent with entrance and ladder to left or right side of the vehicle.
- Ensure tent does not exceed 75kg gross weight
- Tent, gear, and occupants shall not exceed 380kg static load.
- To prevent risk of harm to person or product, HardLid should not be opened when tent has been erected or occupied.
- Refer to “Opening HardLid with top mounted load” for further details
- Always follow Tent manufacturers installation, specifications, and warnings.
- The attachment of a rooftop tent to your vehicle will alter its center of gravity. Adjust your driving accordingly.
- Ensure the ladder length can/is locked to correct height and angle as specified by manufacturer (approx. 70° angle).
- Ensuring it is firmly planted to the ground, as well as maintaining a horizontal floor of the entire tent.

Cleaning and maintenance schedule

W Weekly

M Monthly

6M Every 6 months

1Y Annual

!	Do NOT use pressure washer inside of HardLid. Use either a garden hose on spray setting or hand clean inside of HardLid to prevent water ingress into electrical components.
!	Do NOT use aerosol cleaners or lubricants as propellants can cause chemical attack to plastic parts.
W	Ensure the perimeter seals are kept free of debris and regularly wiped down so as not to damage vehicle body paint work.
M	To clean HardLid, wash with mild pH neutral car wash detergent diluted in fresh water.
M	Wash inside rails on top of the lid to prevent grime or grit build up.
M	Ensure the gas strut shaft remains free of dust and debris by regularly wiping down with a lint free cloth. Inspect wiper seal for tears. Regularly inspect shaft for scratches. If wiper seal or shaft exhibits any damage this may impact on the gas struts performance by loss of lubrication or pressure.
6M	Check that the 6 main clamp bolts that hold the vehicle connector rails to the vehicle are checked with a torque spec of 8Nm.
6M	Painted surfaces can be rejuvenated with a gentle polish and wax.
6M	Lubricate latch with white lithium grease and use a graphite powder on the key lock.
6M	Check the clearance between the HardLid and the vehicle body. Paint damage, scuffs and scratches may occur if clearance is too narrow.
1Y	Apply a multi-purpose dry film lubricant such as Dry Glide, to hinges.

Trouble Shooting Guide

Problem	Possible Causes	Remedy
HardLid rubbing on vehicle tub.	Clearance between the HardLid and tub is insufficient.	Check the fitment of lid to ensure there is 15-18mm minimum clearance on each side. Refer to adjustment section 3 on page 18. Contact your local service center for assistance if this does not remedy the issue.
If lid does not lock/latch pins do not engage	Pin alignment is incorrect	See adjustment step 3, page 18.
Water ingress into back of tub	Lid is not shut properly Or Perimeter seal not fully compressed around edge of tub Or Seal(s) are damaged	See adjustment section 3 on page 18. See adjustment section 3 on page 18. Contact your local service center for assistance.
Key is lost		Contact your local service center to order a replacement key. Quote them the three digit key number engraved on handle lock barrel.
Keys locked in tub	If central locking is enabled, car could auto lock after 40 seconds	Do not leave your keys in the vehicle tray. Contact your local service center to order a replacement key.
HardLid not remaining open unassisted.	Accessories stored on lid are too heavy for standard gas struts.	HardLid is supplied with 400N Gas Struts, which are suitable for an unloaded lid. HardLid can hold a maximum of 75 kgs in the closed position, and we recommend a maximum loading of 25 kgs when opening the lid. If you require your lid to remain open whilst loaded, you will need to purchase a Heavy Load Strut Upgrade kit which is available through your local service center (see upgrade kit details on page 24).

Premium Electronic Upgrade Kit

HardLid is available in either Standard or Premium Electronic. The Premium model features all the standard features with the addition of central locking integration and light. HardLid Standard can be upgraded at any point to Premium Electronic.

Vehicle Model	Part Number
Toyota Hilux 15+	10058186
Ford Ranger 22+	10058183
Nissan Navara 21+	10058185
Isuzu D-Max 20+	10058184
Mazda BT50 20+	10058184
Volkswagen Amarok 23+	

Heavy Load Strut Upgrade Kit

The heavy load strut upgrade kit is recommended for customers who use their exterior accessory channels to carry heavy loads often. The kit has stronger struts that will make opening the lid easier when loaded.

Heavy Load Kit	Part Number
450N	10056267
500N	10056450

HardLid Detail Log

VEHICLE MODEL:	
SERIAL NUMBER:	
KEY CODE:	
PURCHASE DATE:	
SERVICE CENTRE CONTACT DETAILS:	

In producing this document ARB NZ Ltd. has relied upon information and representations made by third party suppliers and to the extent permitted by law ARB NZ accepts no responsibility for any losses, faults or damage caused to the vehicle or accessory components that occur due to a failure to properly follow these instructions.