

Maximum Carrying Capacity: 2-Bars: 100kg; 1-Bar: 50kg

**NOTE:** Carrying capacity may be limited by the vehicle manufacturer load rating. Check vehicle manufacturer specifications.

### Parts List: (Refer to Fig.1)

| Item | Description                  | Qty.       | Part No. |
|------|------------------------------|------------|----------|
| 1    | CAP Cross Bar & Buffer Strip | 3/ 2**/ 1* | B11B     |
| 2    | End Support                  | 6/ 4**/ 2* | MSES017  |
| 3    | Adaptor Block                | 6/ 4**/ 2* | 27-0717  |
| 4    | Rubber Gasket                | 6/ 4**/ 2* | 122296   |
| 5    | Security Key                 | 1          | 22-0811  |
| 6    | M6 x 50 Security Bolts       | 2/ 0**/ 2* | 22-0355  |
| 7    | M6 x 55 Security Bolts       | 4/ 4**/ 0* | 22-0493  |
| 8    | M6 Washer                    | 6/ 4**/ 2* | 22-0043  |
| 9    | M8 Spring Washer             | 6/ 4**/ 2* | 22-0162  |
| 10   | M8 Nut                       | 6/ 4**/ 2* | 22-0139  |
| 11   | Slug                         | 6/ 4**/ 2* | 27-0116  |
| 12   | M8 Washer                    | 6/ 4**/ 2* | 22-0186  |
| 13   | M8 x 20mm                    | 6/ 4**/ 2* | 22-0496  |
| 14   | CAP End Cap                  | 6/ 4**/ 2* | 27-0345  |
| 15   | Anchor Bolt                  | 6/ 4**/ 2* | 22-0938  |
| 16   | M6 Nylon Nut                 | 6/ 4**/ 2* | 22-0460  |
| 17   | M6 Star Washer               | 6/ 4**/ 2* | 22-0951  |
| 18   | Fitting Instructions         | 1          |          |

The first qty. number denotes the quantity included in a 3 bar fitment.

\*\*The second qty. number denotes the quantity included in a 2 bar fitment.

\*The third qty. number denotes the quantity included in a single bar fitment.

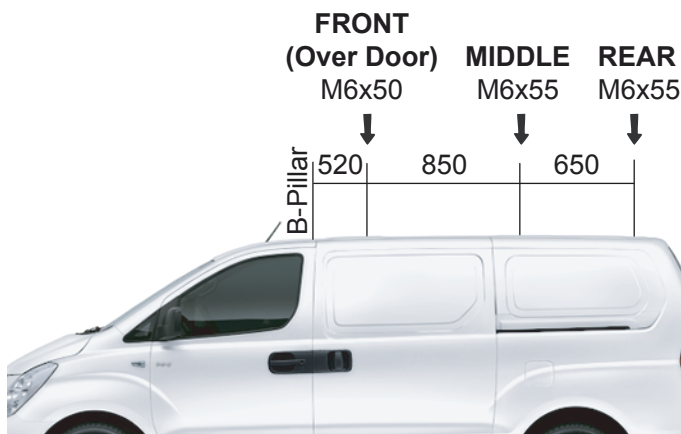
### NOTE: Prior to Assembly

Prior to assembling, check that the kit contains all the parts you will need to fit the Roof Racks. Refer to the Parts List for guidance. Please read these fitting instructions prior to assembly.

Fig. 2

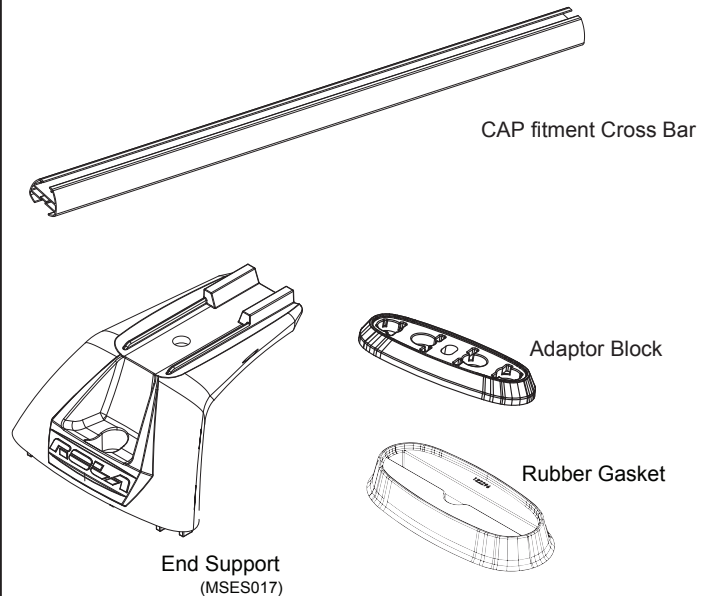
### Anchor point and M6 security bolt locations

Single bar fitments are designed for the front position (over door).  
Two bar fitments are designed for the rear two positions.

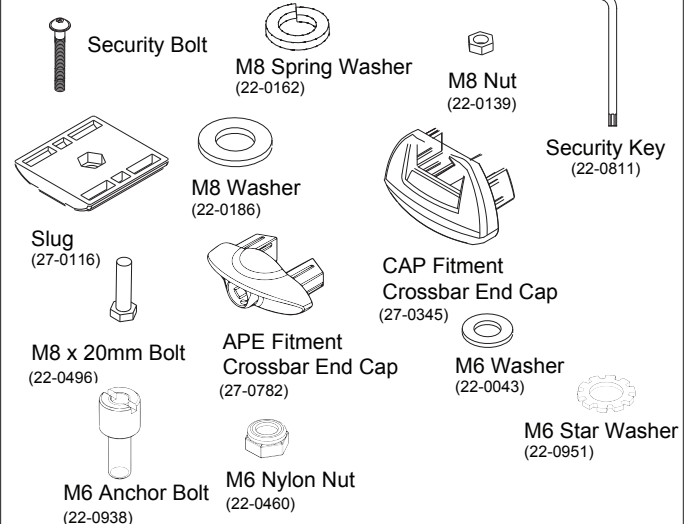


FAILURE TO FOLLOW THESE INSTRUCTIONS WILL VOID WARRANTY

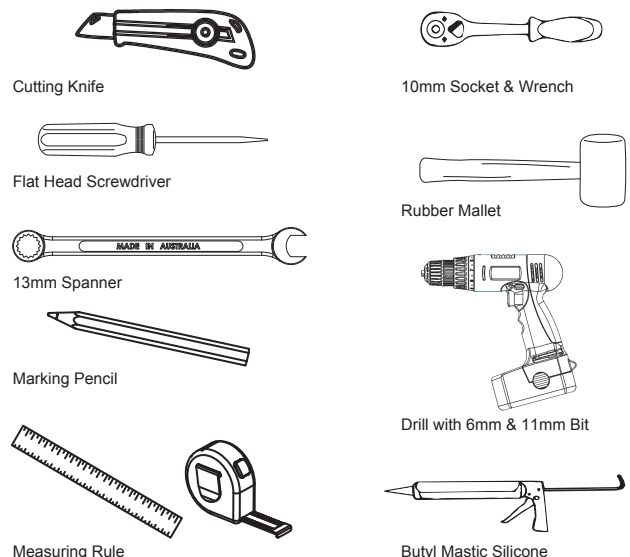
Fig. 1



### Fit Kit - Hardware



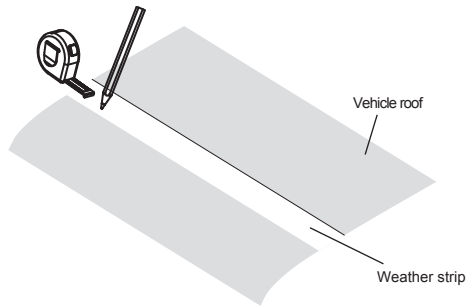
**Please Note:** The following tools will be required



### Anchor Point Installation

Prior to Assembly, check that your kit contains all the parts as listed above. Ensure the vehicle roof is clean and dry. Use Knife to cut through the packaging.

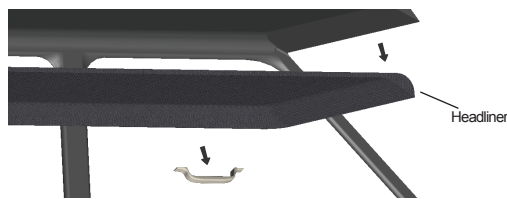
Fig 3



### STEP 1

Measure the distances rearward of the B-pillar centre as shown in Figure 2, for both sides of the vehicle. Mark the measured location on the weather strip (Fig 3).

Fig 4

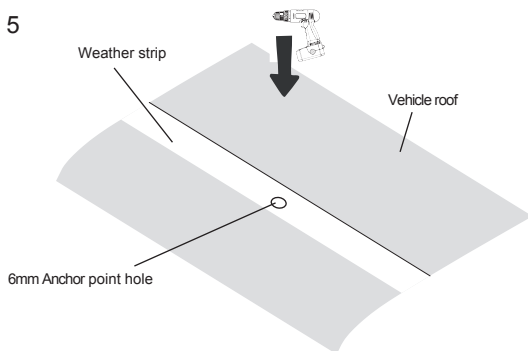


### STEP 2 - IF APPLICABLE

Remove the door seal trim, interior grab handles and pillar trim (if applicable) to lower the headliner to enable access to the base of the anchor bolt with the socket wrench. Exercise care not to damage the headliner.

**TIP:** Use disposable gloves to ensure hands do not mark interior trim.

Fig 5



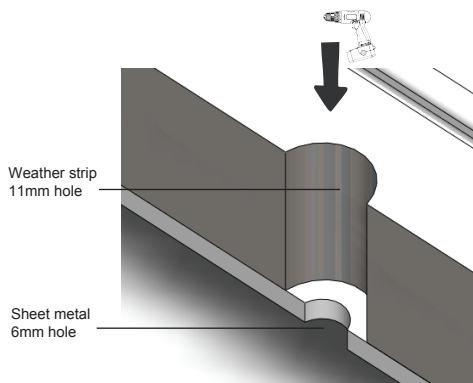
### STEP 3

Drill a 6mm diameter hole through the weather strip and roof sheet metal at the anchor point location.

**⚠ Be carefull to avoid damaging any curtain airbags.**

**TIPS:** Use a roof protector to ensure the roof is not damaged.  
Use a drill stop to ensure airbags are not damaged.

Fig 6

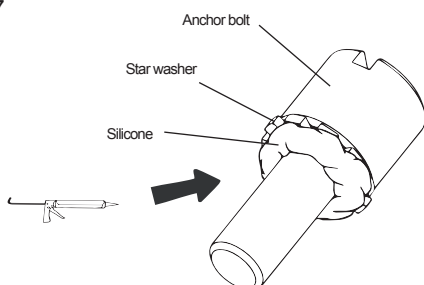


### STEP 4

Drill an 11mm diameter hole through the **weather strip only** at the anchor point location. Take care NOT to drill through the sheet metal.

**TIP:** Use a roof protector and drill stop to ensure the roof is not damaged.

Fig 7



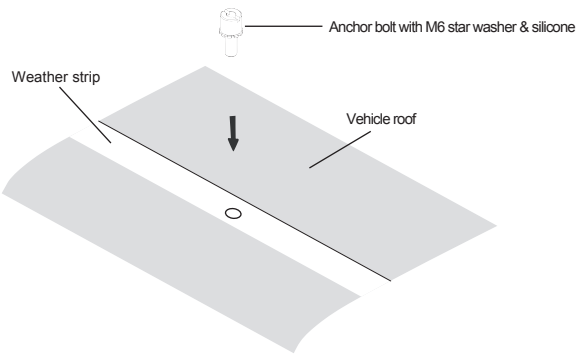
### STEP 5

Thread anchor bolt through star washer and apply Butyl Mastic Silicone to the base of the star washer to create a water tight seal.

**NOTE:** Fully install one anchor bolt at a time to ensure silicone cures properly to create a watertight seal.

FAILURE TO FOLLOW THESE INSTRUCTIONS WILL VOID WARRANTY

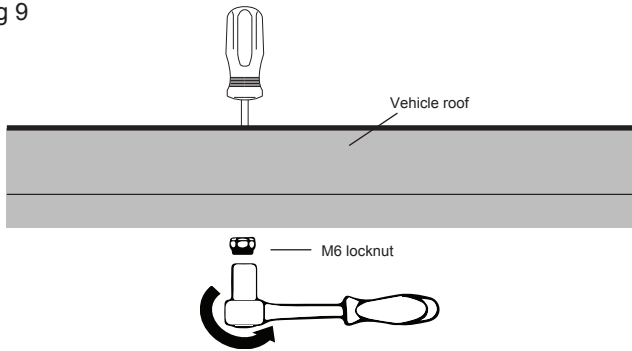
Fig 8



### STEP 6

Insert the anchor bolt with M6 star washer and silicone into the anchor point hole.

Fig 9



### STEP 7

Hold the anchor bolt in place with a wide flathead screwdriver and secure with nylock nut using a 10mm socket wrench.

### STEP 8

Repeat steps 3 to 7 for all anchor points.

Fig 10



### STEP 9 - IF APPLICABLE

Re-attach the headliner, handles and interior trim.

**TIP:** Use disposable gloves to ensure hands do not mark interior trim.

Fig. 11a

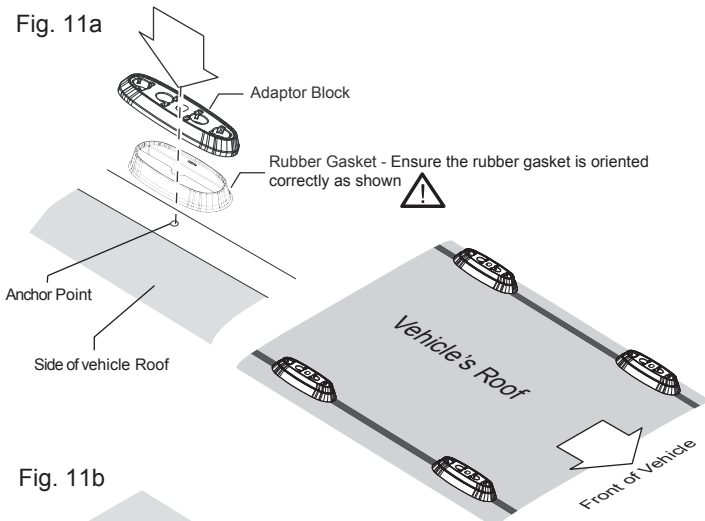
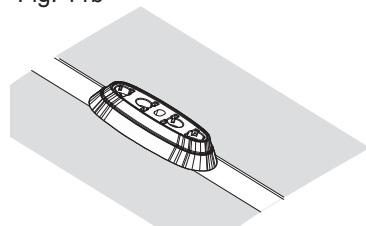


Fig. 11b



### Installing the Rubber Gaskets and Adaptor Block

#### STEP 10:

A. Locate the Rubber Gasket over the Anchor Point.

- ⚠ Ensure the Rubber Gasket is oriented correctly (Fig. 11a).
- ⚠ Ensure that the center hole in the gasket lines up with the anchor point thread in the roof.

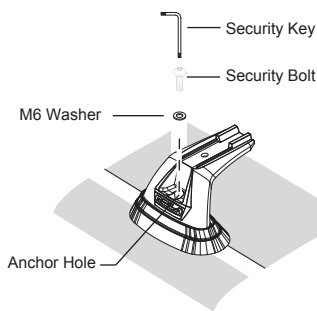
B. Locate the Adaptor Block onto the Rubber Gasket

- ⚠ Ensure the Adaptor Block is oriented correctly (Fig. 11b).
- ⚠ Ensure that the center hole in the Adaptor Block lines up with the anchor point thread in the roof.

C. Repeat STEPS 10A and 10B with the remaining Adaptors.

FAILURE TO FOLLOW THESE INSTRUCTIONS WILL VOID WARRANTY

Fig. 12a



**ENSURE THE CORRECT SECURITY BOLT IS USED:**

FRONT POSITION (Over Door): M6 x 50  
MIDDLE POSITION: M6 x 55  
REAR POSITION: M6 x 55

Fig. 12b

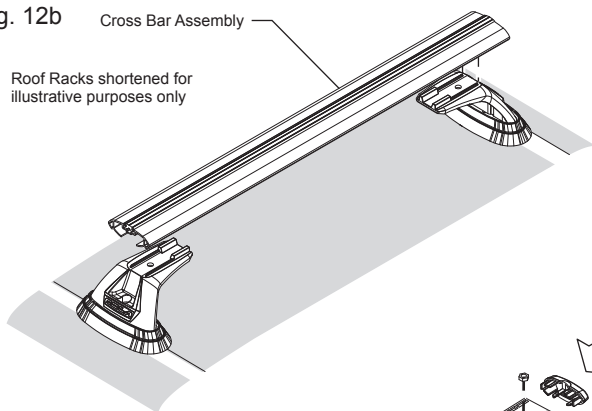
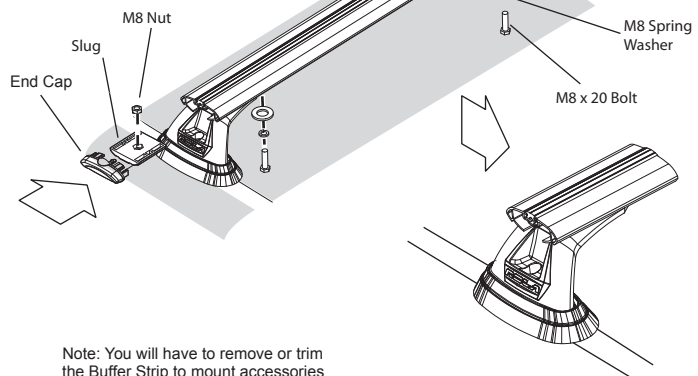


Fig. 12c



Note: You will have to remove or trim the Buffer Strip to mount accessories

|                    |               |             |
|--------------------|---------------|-------------|
| <b>FRONT</b>       | <b>MIDDLE</b> | <b>REAR</b> |
| <b>(Over Door)</b> |               |             |
| M6x50              | M6x55         | M6x55       |

### Fitting the Cross Bars to the Vehicle

#### STEP 11:

- A. Select Security bolts for each anchor point position as shown in Fig. 2 on the first page.

Place an end support onto the adaptor from STEP 10, and engage the threads of the security bolt by inserting the bolt into the anchor hole, and turning approximately 2-3 turns with the security key (Refer to Fig. 12a). Do not tighten yet. Repeat for the opposite side.

- B. Place the cross bar onto the end supports ensuring that the end supports are located in the cutouts on the underside of the cross bar. (Refer to Fig. 12b)  
Check that the cross bar has equally distanced overhang on either side from the end support.

- C. Insert the M8 nut into the cavity on the Slug. (Refer to Fig. 12c).

- D. Insert the Slug into the cross bar, and align it so that the M8 nut in the Slug and the hole at the bottom of the end support line up. (Refer to Fig. 12c).

- E. Secure the cross bar to the end support by tightening the M8x20mm bolt through the hole in the end support and up into the nut that is located in the cavity of the Slug. (Refer to Fig. 12c).

- F. Using a 13mm Spanner, tighten the M8x20mm bolt on the underside of the end support. (Refer to Fig. 12c).  
Using the Security Key, tighten the security bolts to approximately 7Nm of torque or a firm hand-tightness. (Refer to Fig. 12c).

- G. Insert end caps into both ends of the cross bar (Refer to Fig. 12c).

### Using the Roof Racks

#### STEP 12:

- A. Refer to 'Care for your Racks' to maintain your Roof Racks.

- B. To load accessories into the Channel of the Cross bars, remove the end cap from the end of the cross bar.  
Once the accessories have been loaded, re-insert the end cap back into the end of the cross tube.

Intermittently check that all Screws and Bolts are sufficiently tightened whilst the Roof Racks are in use.

## WARNINGS

It is essential for the proper assembly, operation and use of the anchor point that the instructions and safety precautions supplied are strictly observed. The anchor points are designed for use with roof-racks. After first installation, Stop and check all anchor points after a short distance of travel. Where the roof-rack is to be used in off-road conditions, a safety weight reduction of 1.5 should be observed from the total carrying capacity (eg. 60kg becomes 40kg).

Sequent will not be liable to the purchaser of any other person for any consequential, direct or indirect loss, damage or costs incurred or suffered by the purchaser or any other person including but not limited to damage to persons or property, loss of turnover, loss of profits, loss of business or goodwill arising from or in relation to the assembly and use of the artificial anchor point, or the non-observance of the fitting and care instructions.

FAILURE TO FOLLOW THESE INSTRUCTIONS WILL VOID WARRANTY