

Maximum Carrying Capacity: Refer to vehicle roof capacity

Parts List: (Refer to Fig.1)

| Item | Description | Qty. | |
|------|--------------------------------|------------|---------------|
| 1a | Cross Bars (with Buffer Strip) | 3/ 2**/ 1* | (APE fitment) |
| 1b | Cross Bars (with Buffer Strip) | 3/ 2**/ 1* | (CAP fitment) |
| 2 | End Support | 6/ 4**/ 2* | |
| 3 | Plastic Multi Pad | 6/ 4**/ 2* | |
| 4 | Rubber Gasket | 6/ 4**/ 2* | |
| 5 | Security Key | 1 | |
| 6 | M6 x 40mm Bolts | 6/ 4**/ 2* | |
| 7 | M6 Washer | 6/ 4**/ 2* | |
| 8 | M6 Spring Washer | 6/ 4**/ 2* | |
| 9 | M8 x 20 Bolt | 6/ 4**/ 2* | |
| 10 | M8 Washer | 6/ 4**/ 2* | |
| 11 | M8 Spring Washer | 6/ 4**/ 2* | |
| 12 | Coupling Nut | 6/ 4**/ 2* | |
| 13 | Height Adaptor | 4/ 0**/ 0* | |
| 14 | Fitting instructions | 1 | |

The first qty. number denotes the quantity included in a 3 bar fitment.

**The second qty. number denotes the quantity included in a 2 bar fitment.

*The third qty. number denotes the quantity included in a single bar fitment.

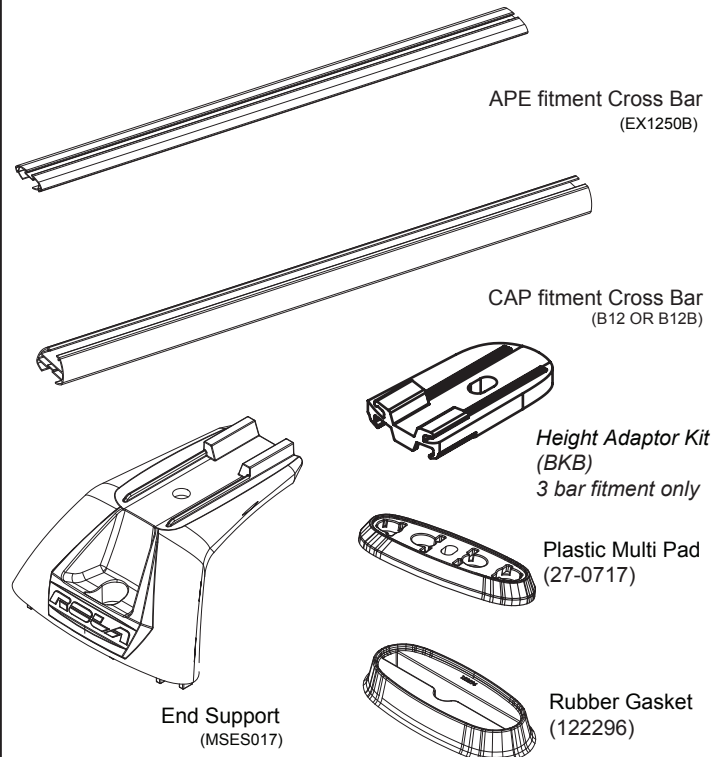
NOTE: Prior to Assembly

Prior to assembling, check that the kit contains all the parts you will need to fit the Roof Racks. Refer to the Parts List for guidance. Please read these fitting instructions prior to assembly.

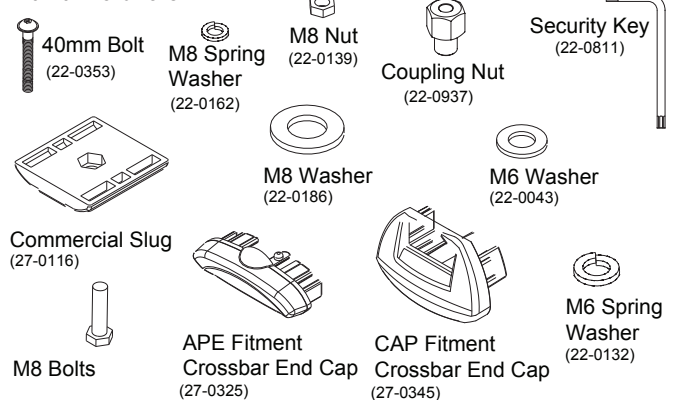
Location of Anchor Points on Vehicle Roof:



Your roofrack is designed to utilise the vehicle anchor points. Some models have only two anchor points.

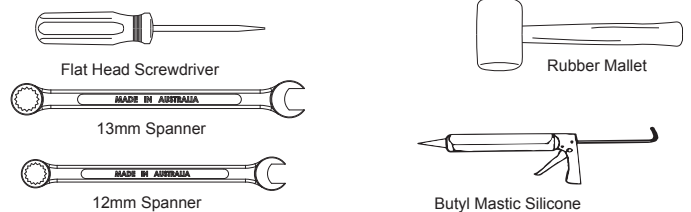


Fit Kit - Hardware

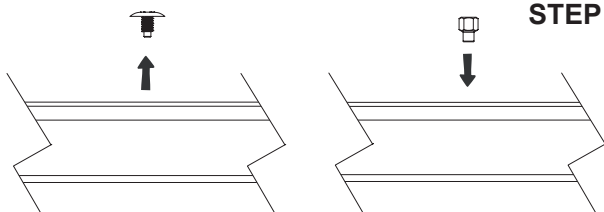


Please Note:

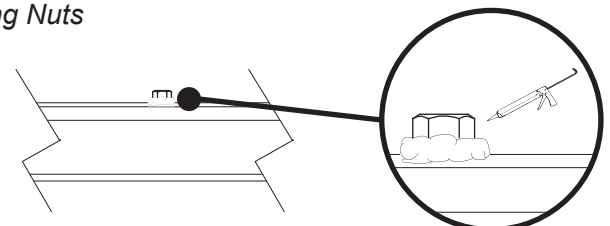
You will require the following tools



STEP 1: Install Coupling Nuts



A. Remove anchor point cap bolts and insert the coupling nuts. Tighten the coupling nut with a 12mm socket or spanner.



B. Seal the anchor points with butyl mastic silicone.

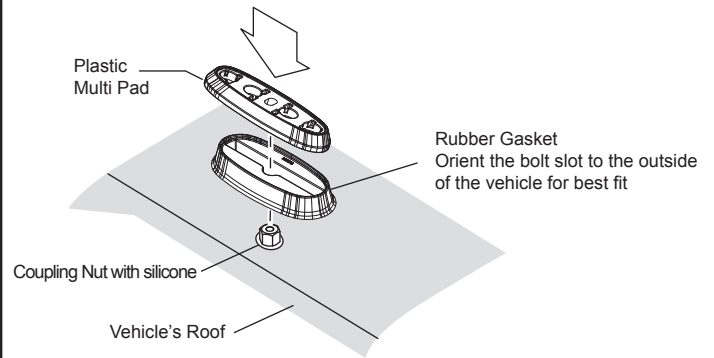
FAILURE TO FOLLOW THESE INSTRUCTIONS WILL VOID WARRANTY

STEP 2: Install the Rubber Gaskets and Multi Pads

A. Locate the Plastic Multi Pad onto the Rubber Gasket

Ensure that the center hole in the Multi Pad lines up with the coupling nut in the roof.

B. Repeat STEPS A and B with the remaining Adaptors.



STEP 3: Fit the Cross Bars to the Vehicle

A. Place an end support onto the adaptor from STEP 2, and loosely secure it down with a security bolt by inserting the bolt into the coupling nut, and turning approximately 2-3 turns with the security key (Refer to Fig. 1). Do not fully tighten yet. Repeat for all locations.

B. For a 3 bar fitment, locate the height adaptors as shown in Fig. 2a. 1 and 2 bar fitments do not require height adaptors. Place the crossbar (or height adaptors) onto the end supports ensuring that the end supports are located into the cutouts on the underside of the crossbar (refer to Fig. 2a). Check that the crossbar has equally distanced overhang on either side from the end support.

C. Insert the M8 nut into the cavity on the Commercial Slug. (Refer to Fig. 3).

D. Insert the Commercial Slug into the cross tube, and align it so that the M8 nut in the Commercial Slug and the hole at the bottom of the end support line up. (Refer to Fig. 3).

E. Secure the cross tube to the end support by screwing the M8x20mm bolt through the hole in the end support and up into the nut that is located in the cavity of the Commercial Slug nut. (Refer to Fig. 3).

F. Using a 13mm Spanner, full tighten the 20mm bolt on the underside of the end support. (Refer to Fig. 3). Using the Security Key, tighten the security bolts to approximately 7Nm of torque or a firm hand-tightness. (Refer to Fig. 3).

G. Insert an end cap into both ends of the cross tube (Refer to Fig. 3).

Fig. 1

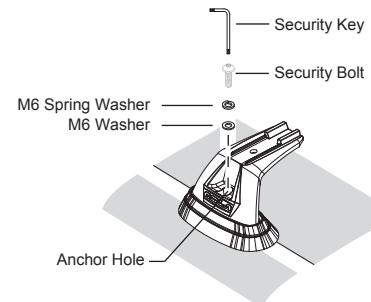


Fig. 2a

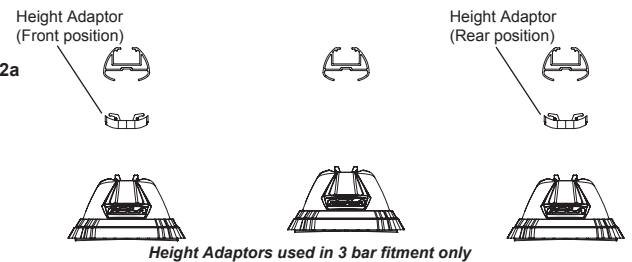


Fig. 2b

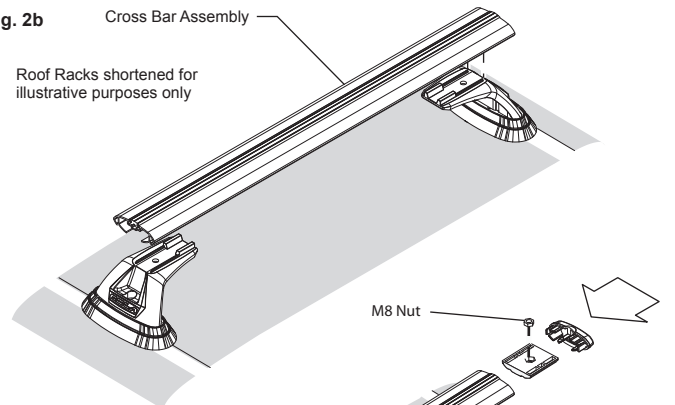
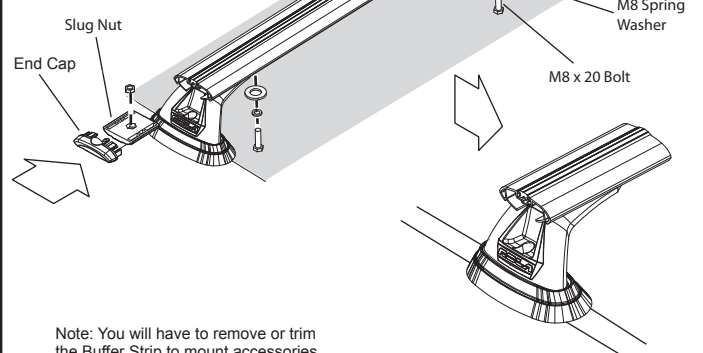


Fig. 3



Note: You will have to remove or trim the Buffer Strip to mount accessories

STEP 4: Using the Roof Racks

A. Refer to 'Care for your Racks' to maintain your Roof Racks.

B. To load accessories into the Channel of the Cross Bars, remove the end cap from the end of the cross tube. Once the accessories have been loaded, re-insert the end cap back into the end of the cross tube.

Intermittently check that all Screws and Bolts are sufficiently tightened while the Roof Racks are in use.

FAILURE TO FOLLOW THESE INSTRUCTIONS WILL VOID WARRANTY