

ASSEMBLY OF CROSS-BARS

1. Ensure the roof is clean, free from dust and grease.
 2. Insert the neck of the End-Support into the void of the Cross-bar profile. They are designed to be a tight fit: use a rubber mallet if necessary (Fig.1)
 3. Pull back the rubber Buffer Strip about 20mm until the screw hole can be accessed.(Fig. 2) Using a Phillips Head Screwdriver, fasten the screw through the cross-bar and into the End Support. Do this for all four sides and replace the buffer strip.
- NOTE:** The longer cross-bars are to be fitted to the front of the vehicle. Check labelling on the underside of the cross-bar.

FITTING TRACKS TO VEHICLE

4. Slide the large hex nuts into the track, fit the crossbars to the track with the special bolt. Set the end supports equal distance from each end of the track (approx. 20mm) and tighten the bolt with the key supplied. The track is marked front on the underside.
5. Place the complete unit on the roof of the vehicle (do not remove the backing tape from the tracks at this stage). Ensure the correct positioning of the unit (The rear of the unit sits 30mm from the back seam line - Fig.5) Mark the rawl plug holes, remove the rack and drill the holes using 3/8 inch (9.5mm) drill bit, taking care not to drill through sound bar (the drill bit need only penetrate the fibreglass canopy; a drill stop is recommended).
6. Remove all drilling waste from roof.
7. Place the rawl plug into the drilled hole in the roof (Fig.5)
8. Remove the crossbars from the tracks. Place the blind end caps over the two forward rawl plugs, and the open end caps over the rear most rawl plugs. Peel protective paper from foam tape on underside of the tracks. Place the tracks on the roof of the vehicle aligning the holes with the rawl plug. Fix the tracks tightly to the roof of the vehicle using the rawl bolts.

FITTING CROSS BARS TO VEHICLE

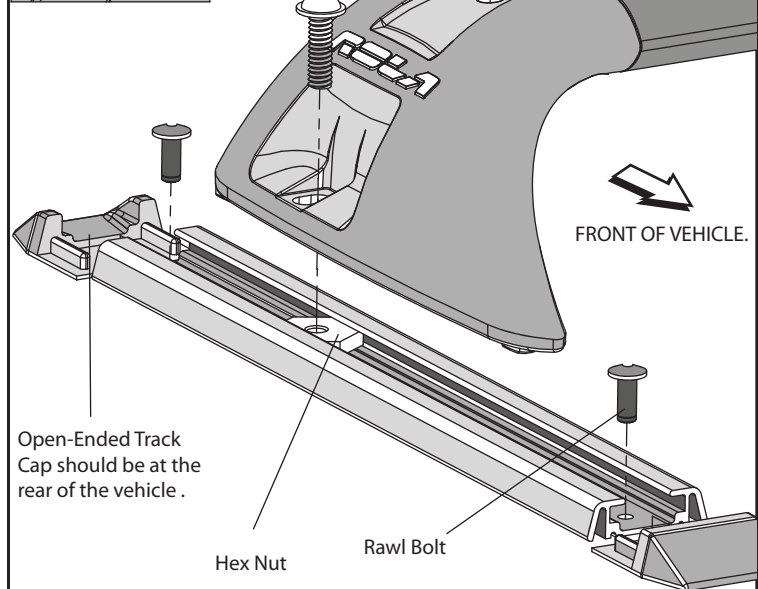
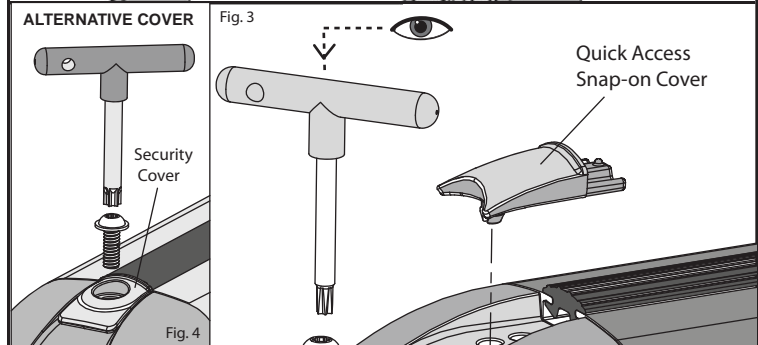
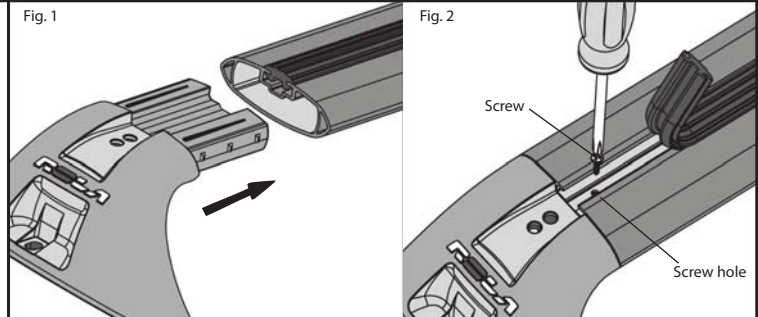
9. Place the crossbar assemblies onto the tracks, adjust them to the desired position ensuring the lugs on the underside of the end supports seat in track groove. Fit with screws supplied into the hex nuts and tension with a tee key.
10. You are now ready to mount your accessory set onto the cross-bars using the Global Mount Channel. Once installed, insert the 'Global Channel' Covers into the End Supports. You have a choice of 2 - (a) quick access snap-on cover or (b) long term mounting - security cover to cap off and lock the mount channel. (Fig. 4)

FINAL CHECK

Ensure that Cross-bars are parallel and square to the front and rear axis of the vehicle. After loading, check bolt tightness and ensure that Locking Straps are correctly engaged to the vehicle.

CAUTION:

When installing this roof rack ensure the rivets do not damage or inhibit the effective use of Curtain Airbags. If you are in any doubt regarding the installation of this roof rack, please consult with your vehicle manufacturer or Rola Dealer.



General Usage Information

It is essential for the proper assembly, operation and use of the Roof Rack that the instructions and safety precautions supplied are strictly observed. Read any fitting, care and usage instruction carefully.

The maximum permissible load for your Roof Bar is the lower of the maximum load capacity specified in your vehicle operation manual, or specified as applying to the Roof-Rack. Do not exceed the maximum specified load capacity.

Maximum permissible load = weight of the Roof Rack + weight of accessories + weight of load (cargo).

When fitting the Roof-Rack and transporting a load, ensure the vehicle's functions are not impaired (eg, sunroof, aerials, windscreen wipers, mirrors). Rear doors on Hatch- and Wagon-type vehicles should be inspected for adequate clearance for full opening operation of the boot/tailgate.

Stop and check all screw connections, bolts and retaining straps after a short distance of travel. Repeat these checks at regular intervals.

Warnings

Remember that the fitting of a Roof Rack and the transport of a load increases the overall height of the carrying vehicle.

Where the Roof-Rack is to be used in off-road conditions, a safety weight reduction of 1.5 should be observed from the total carrying capacity. (eg. 60kg becomes 40kg)

Cequent will not be liable to the purchaser or any other person for any consequential, incidental, direct or indirect loss, damage or costs incurred or suffered by the purchaser or any other person including but not limited to damage to persons or property, loss of turnover, loss of profits, loss of business or goodwill, arising from or in relation to the assembly and use of the Roof rack, or the non-observance of the fitting and care instructions.

APPENDICES & ADDITIONAL 'FITMENT SPECIFIC' FITTING STEPS - IF REQUIRED

This area has been intentionally left blank.