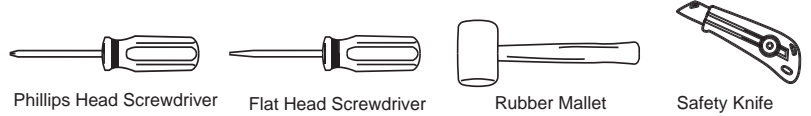


END SUPPORT (RIGHT)	END SUPPORT (LEFT)	MOUNT PAD (RIGHT)	MOUNT PAD (LEFT)	SNAP-ON COVER	SECURITY COVER	STRAP BRACKET	SCREW	SECURITY BOLT	SECURITY BOLT	ASSEMBLY KEY	CROSS-BAR ASSEMBLY

SOME FITMENTS MAY ALSO FEATURE THE FOLLOWING COMPONENTS:

ANCHOR POINT BOLT	ALLEN KEY	BOTTOM STRAP BRACKET	BOLT COVER

Please Note: You will require the following tools



ASSEMBLY OF CROSS-BARS

1. Ensure the roof is clean, free from dust and grease.

2. Insert the neck of the End-Support into the void of the Cross-bar profile. They are designed to be a tight fit: use a rubber mallet if necessary (Fig.1)

3. Pull back the rubber Buffer Strip about 20mm until the screw hole can be accessed.(Fig. 2) Using a Phillips Head Screwdriver, fasten the screw through the cross-bar and into the End Support.

Do this for all four sides and replace the buffer strip.

NOTE: The longer cross-bars are to be fitted to the front of the vehicle. Check labelling on the underside of the cross-bar.

FITTING CROSS-BARS TO VEHICLE

4. Fit the crossbars to the roof in the recommended positions relevant to the body work marks on the inside of both doors.

The locking straps clamp into the underside of the door openings and protrude from each door when closed.

Fit the special bolt to attach one side of the crossbar to the locking strap.

5. Now pull hard on the other side of the crossbar until both special bolts can be located correctly with their respective rubber pads and locking straps.

6. Tighten all the bolts evenly with the key provided but avoid overtightening by leaving 3 -5mm gap between the end support and the locking straps. (Fig. 9). Overtightening may cause damage to both the roof bars and/or the vehicle bodywork.

7. Place the assembled crossbars on the pads and fit the special bolts and washers (Fig. 5). tighten all the bolts evenly with the key provided Avoid overtightening as this may cause damage to both the roof bars and/or the vehicle bodywork.

8. Check all bolts again after loading to ensure correct tensioning.

9. You are now ready to mount your "Accessories" set onto the cross-bars using the Global Mount Channel. Once installed, insert the 'Global Channel' Covers into the End Supports.

Note: You have a choice of 2 - (a) quick access snap-on cover or (b) long term mounting - security cover to cap off and lock the mount channel. (Fig. 6)

Fig. 1

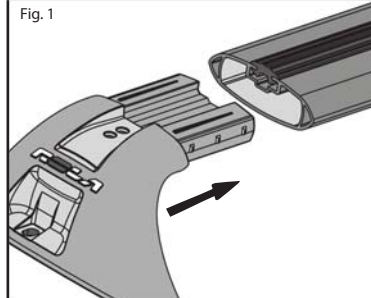


Fig. 2

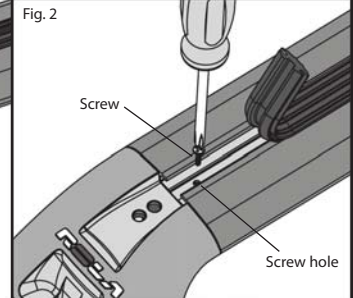


Fig. 3a - IF APPLICABLE

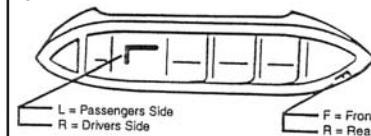


Fig. 3b - IF APPLICABLE

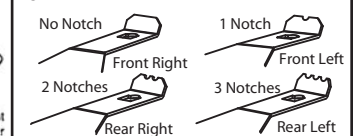


Fig. 4.

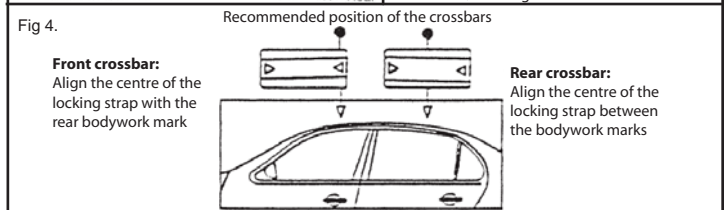


Fig. 5

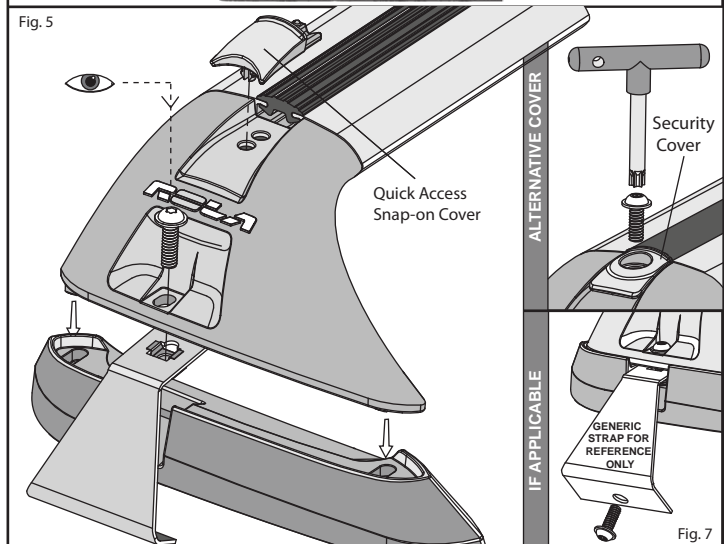


Fig. 8

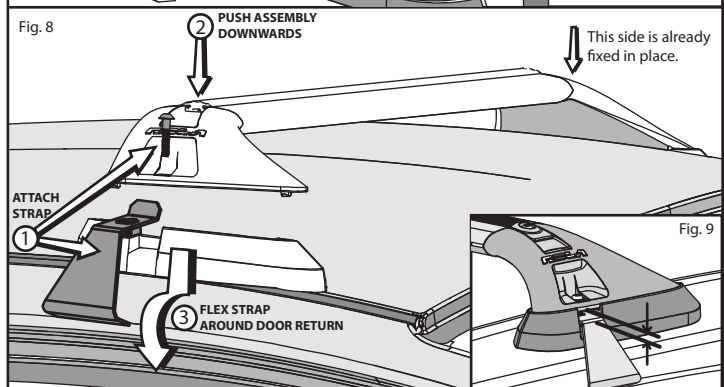


Fig. 9

General Usage Information

It is essential for the proper assembly, operation and use of the Roof Rack that the instructions and safety precautions supplied are strictly observed. Read any fitting, care and usage instruction carefully.

The maximum permissible load for your Roof Bar is the lower of the maximum load capacity specified in your vehicle operation manual, or specified as applying to the Roof-Rack. Do not exceed the maximum specified load capacity.

Maximum permissible load = weight of the Roof Rack + weight of accessories + weight of load (cargo).

When fitting the Roof-Rack and transporting a load, ensure the vehicle's functions are not impaired (eg, sunroof, aerials, windscreen wipers, mirrors). Rear doors on Hatch- and Wagon-type vehicles should be inspected for adequate clearance for full opening operation of the boot/tailgate.

Stop and check all screw connections, bolts and retaining straps after a short distance of travel. Repeat these checks at regular intervals.

Warnings

Remember that the fitting of a Roof Rack and the transport of a load increases the overall height of the carrying vehicle.

Where the Roof-Rack is to be used in off-road conditions, a safety weight reduction of 1.5 should be observed from the total carrying capacity. (eg. 60kg becomes 40kg)

Cequent will not be liable to the purchaser or any other person for any consequential, incidental, direct or indirect loss, damage or costs incurred or suffered by the purchaser or any other person including but not limited to damage to persons or property, loss of turnover, loss of profits, loss of business or goodwill, arising from or in relation to the assembly and use of the Roof rack, or the non-observance of the fitting and care instructions.

APPENDICES & ADDITIONAL 'FITMENT SPECIFIC' FITTING STEPS - IF REQUIRED

This area has been intentionally left blank.