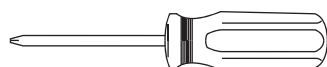
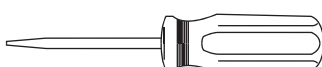


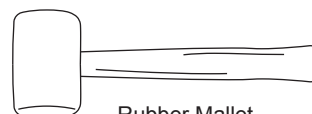
Please Note: You will require the following tools



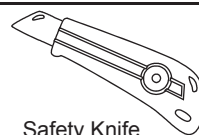
Phillips Head Screwdriver



Flat Head Screwdriver



Rubber Mallet



Safety Knife

Please check your roof-rack box to ensure you have received all components. Read these instructions thoroughly before commencing installation. (Please contact your dealer if your KIT is incomplete)

ASSEMBLY OF CROSS BARS

1. Ensure that the Rail Bars are clean; free from dust and grease.
2. Pre-assemble the End Supports into Cross Bars. They are designed to be a tight fit: Use a rubber mallet if necessary (Fig.1).
3. Slide Top Strap into End Support Chassis (as shown in Fig 2). Fit Star-Head Bolt through the slot closest to the curled end of the Top Strap. This will allow correct Strap alignment while fitting Screw in Step 4.
4. Push rubber Buffer Strip back about 20mm until you can see the screw hole in the cross bar. Using a Phillips head screw-driver, fasten the screw through the cross bar and into the End Support Chassis (Fig 3). Replace Buffer Strip.

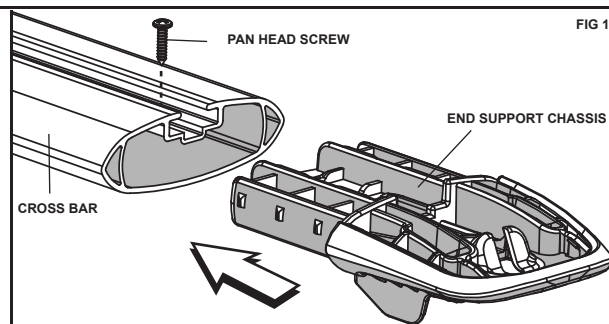


FIG 1

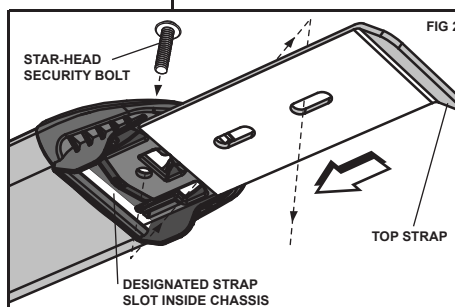


FIG 2

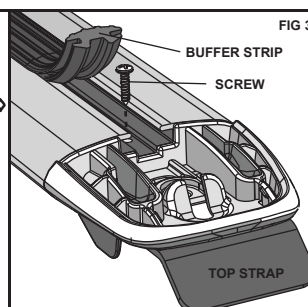
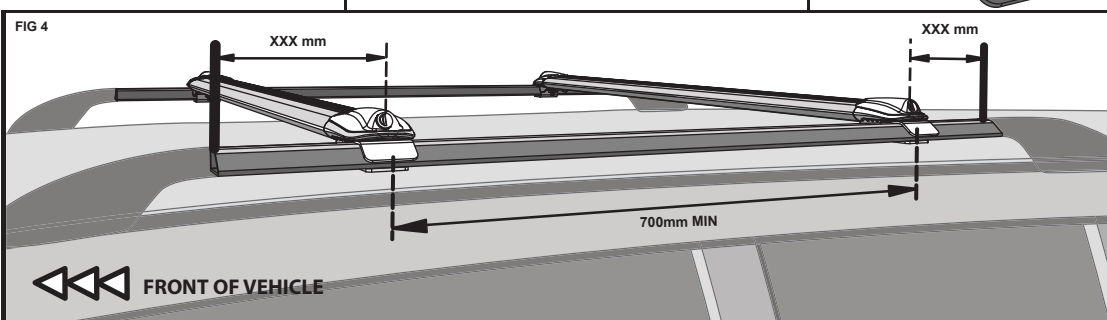


FIG 3

5. Place Cross Bars on the vehicle at the recommended positions shown along the Rail Bars (Fig. 4).

Pull the Top Strap out slightly (5 to 6 mm) to allow Cross Bars to fit onto the vehicle Rail Bars.



FRONT OF VEHICLE

FIG 5

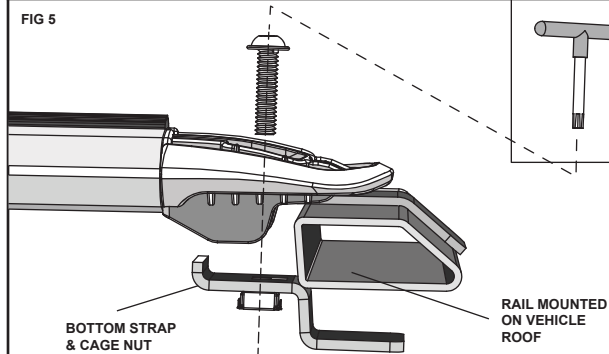
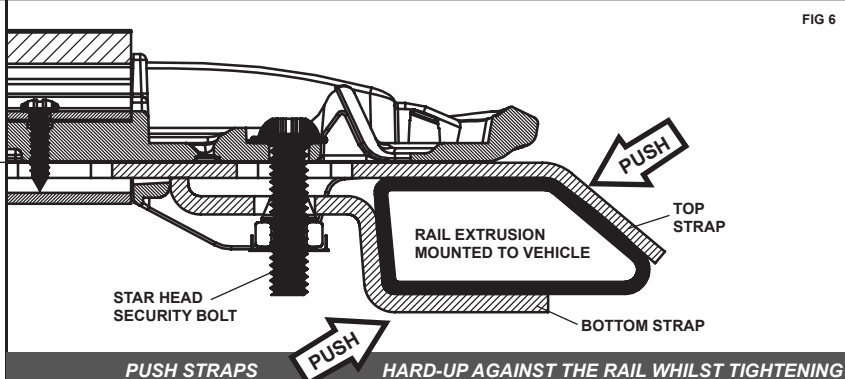


FIG 6



FITTING OF CROSS BARS TO VEHICLE

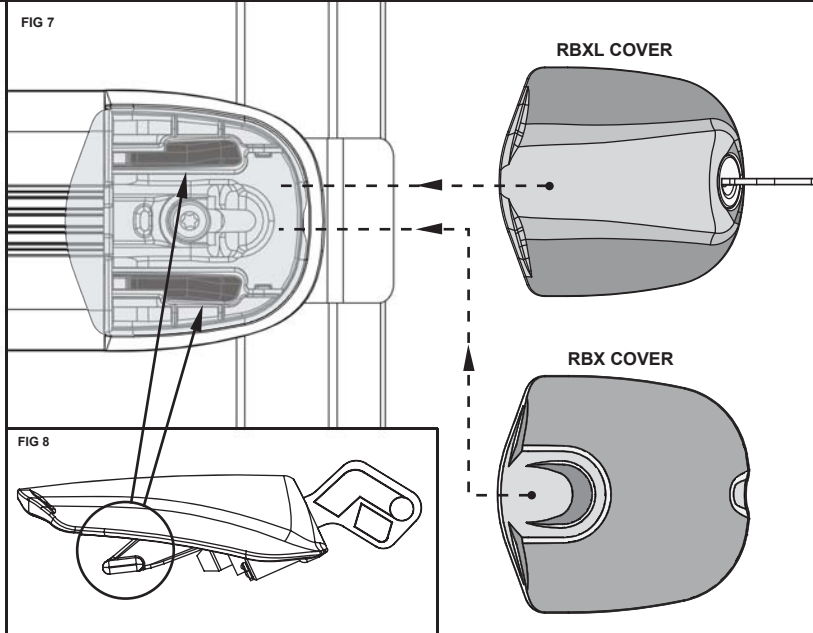
6. Place Bottom Strap under the Top Strap with the Tab facing inward and upward (Fig. 5). While holding the Bottom Strap in place loosely fit the Star Head Bolt with Key provided. Fit each corner in this manner. Check that the Cross Bars are centrally located between the vehicles Rail Bars.

7. Gradually tighten bolts alternatively ensuring Straps are properly engaged, until even tensioning is achieved. While tightening the Bolts pull the Bottom Strap out while pushing the Top Strap in. (Fig 6) **(Do not over-tighten bolts).**

FINAL CHECK BEFORE MOUNTING COVERS

Ensure that both bars are parallel to each other and the straps are tightly mounted against the rail. Ensure the bolts are tightened and the cross bars are well secured. Perform a quick check by tugging the bars back and forth.

FIG 7



INSERTING COVERS

8. Remove covers from Kit. Locate 2 ribs on the underside of the cover (Fig. 8). There are also two designated channels on the End Support Chassis into which these ribs locate. (Fig 7).

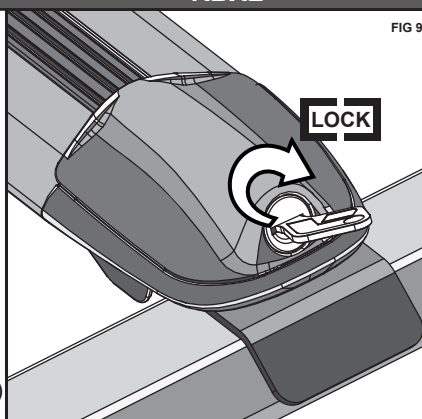
9. Insert the Cover into the End Support Chassis by sliding it through the channels until they positively mate into place and click. Do this for all 4 covers.

RBXL - With the Covers in place, lock the cylinder by rotating 1/4 turn clockwise. (Fig 9)

RBX - Press the cover down firmly against the End Support Chassis until you hear an audible "click". (Fig 10)

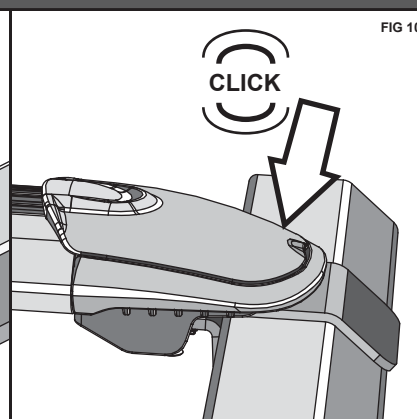
RBXL

FIG 9



RBX

FIG 10



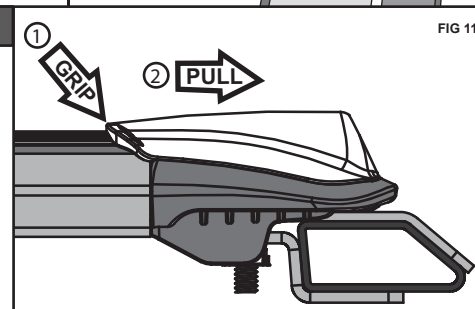
REMOVING COVERS

10. Firmly grip the edge of the cover (as shown by arrow [1] in Fig. 11) - with your fingers, and pull the cover towards you (as shown by arrow [2] in Fig. 11)

RBXL - Ensure cylinder is un-locked before pulling.

RBX - Ensure to prize the cover open with the tip of your car key or a flat-head screw-driver to release the snap-lock prior to pulling/sliding the cover out.

FIG 11



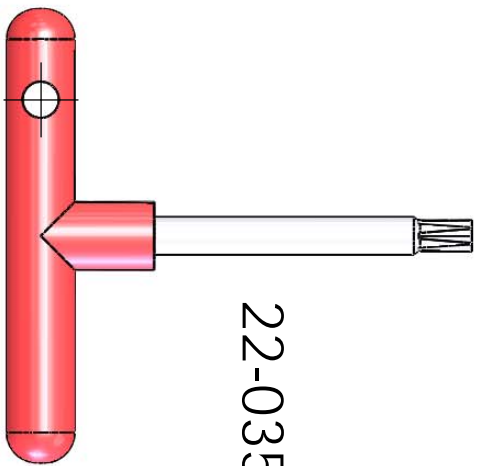
USAGE INSTRUCTIONS:



REGULARLY CHECK THE TIGHTNESS OF LOCKING STRAPS. Loads should be evenly distributed and secured. A number of accessories for carrying special loads is available. Only use NON-STRETCH tie down straps.

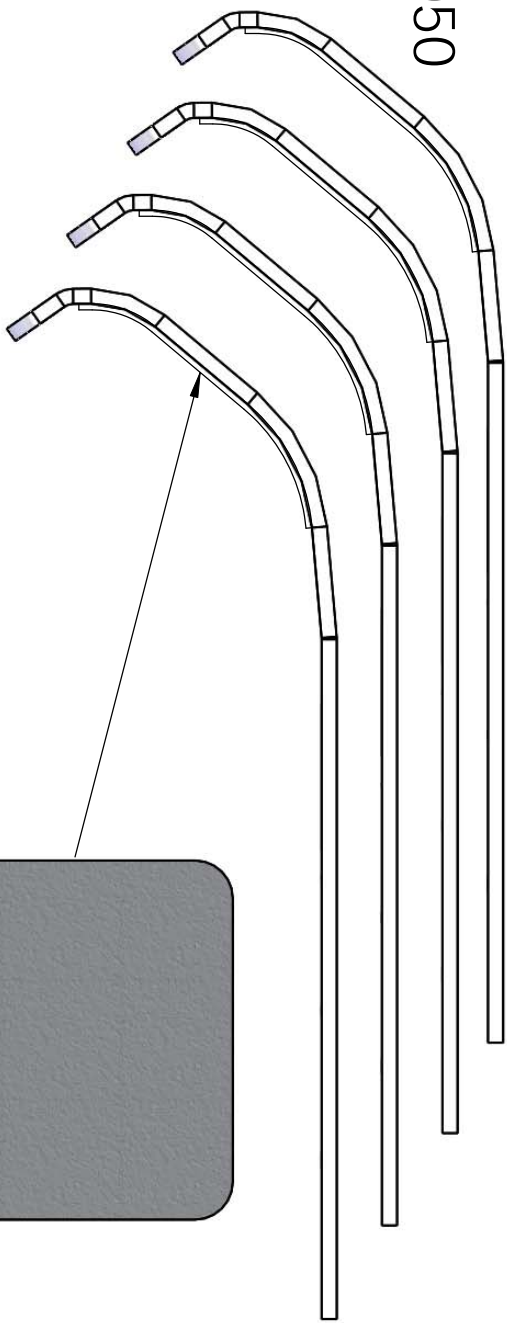
Any weight carried on the vehicle will adversely affect its handling particularly in cornering or in a cross wind and the vehicle should therefore be driven with increased caution.

Be aware of the statutory requirements regarding maximum permissible projections from vehicles.

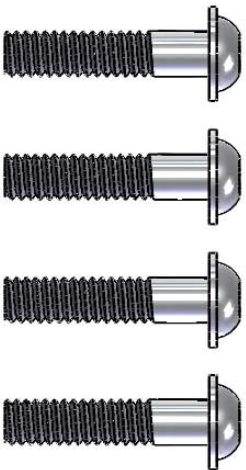


22-0356

4050



22-0221



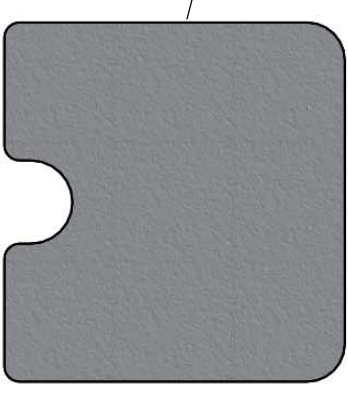
22-0350



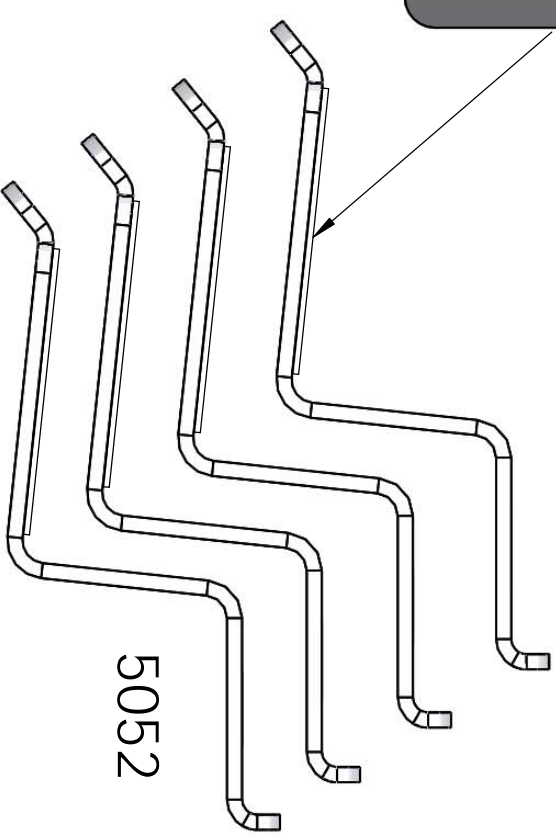
22-0345



30-0030



30-0031



5052