

Parts List:

Item	Description	Qty.	Part No.
1	Cross Bars (with Buffer Strip)	2 (1)	EX1150B
2	End Support	4 (2)	27-0752
3	Adaptor Plate	4 (2)	22-0936
4	Foam Gasket	4 (2)	30-0063
5	Security Key	1	22-0811
6	Fit Kit Hardware (Fig. 1b)	4 (2)	22-0349
7	Fitting instructions	1	
8	5 year warranty	1	

For the Single-Bar fitments, only the relevant Cross Bar and Bolts are included. The number shown in brackets denotes the quantity included in the Single-Bar fitments.

NOTE: Prior to Assembly

Prior to assembling, check that the kit contains all the parts you will need to fit the Roof Racks. Refer to the Parts List for guidance. Please read these fitting instructions prior to assembly.

STEP 1: Removing the Anchor Point Covers

- A. On the vehicle roof you will find 4 Anchor Point Covers paired in two locations indicated by the arrows in Fig 2. Carefully remove these covers.

- ⚠ For a Single-Bar fitment, only remove the two Front or the two Rear covers, depending on the fitment.
- ⚠ Store the Anchor Point Covers and plugs safely while the Roof Racks are in use.

Location of Anchor Points on Vehicle Roof:

Fig. 2

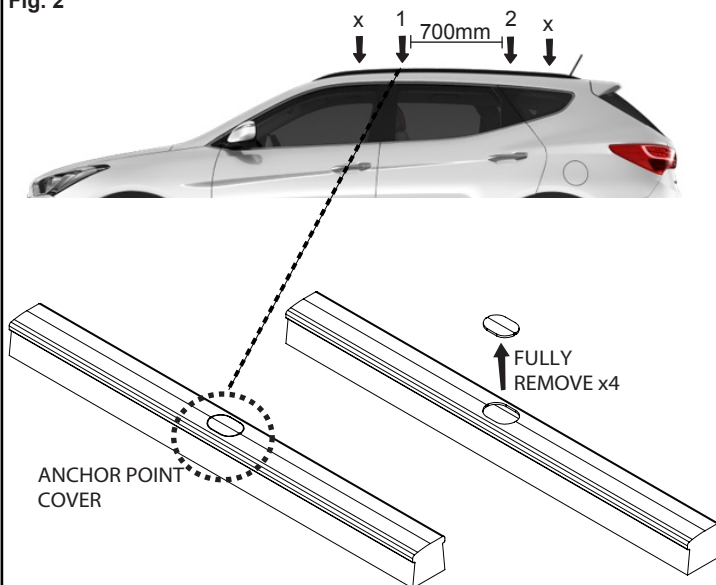


Fig. 1a

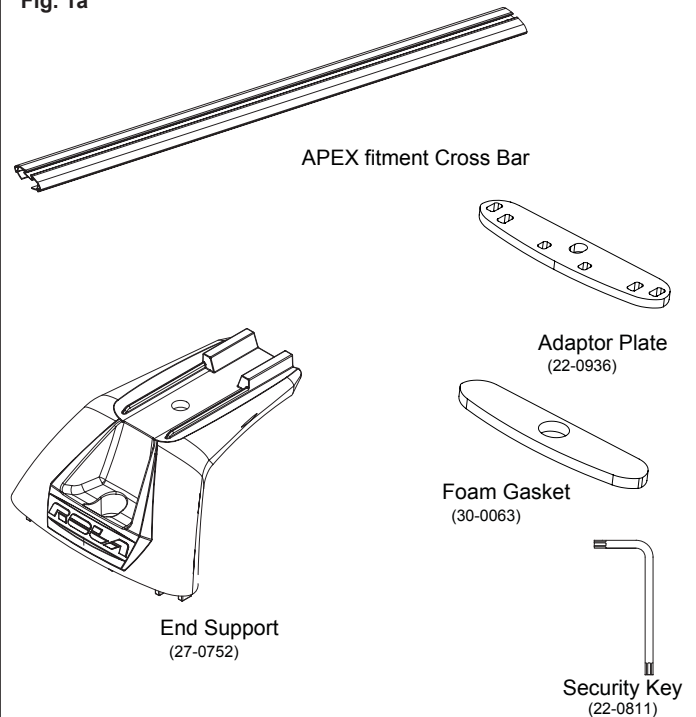
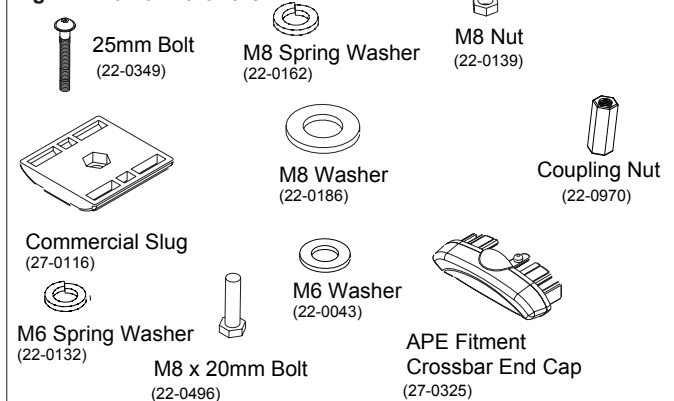
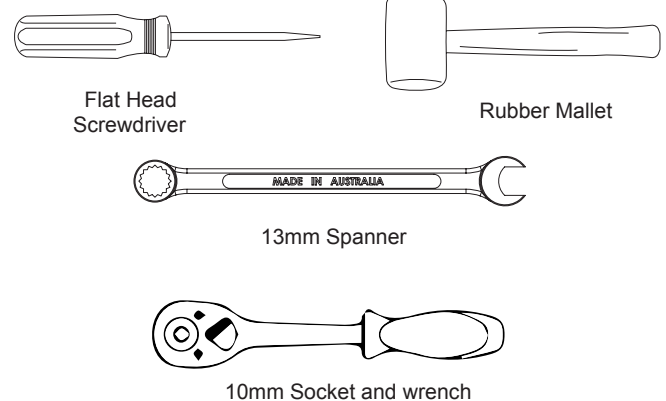


Fig. 1b Fit Kit - Hardware



Please Note: You will require the following tools

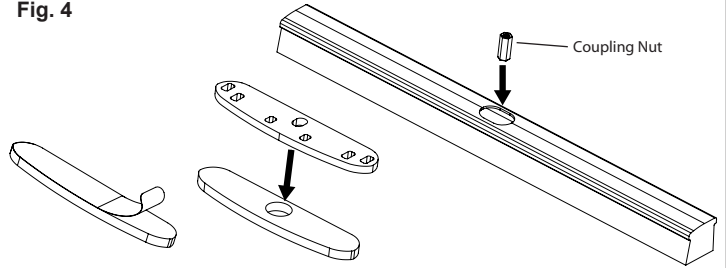


FAILURE TO FOLLOW THESE INSTRUCTIONS WILL VOID WARRANTY

STEP 2: Prepare the anchor points (Fig. 4)

- Peel backing off the foam gasket and stick it to the adaptor plate.
- Stick the foam gasket to the adaptor plate
- Securely fasten the M6 Coupling nut to the anchor point in the vehicle roof rail using the 10mm socket and wrench.

Fig. 4



STEP 3: Fit End Supports

- Locate the end support on the adaptor plate with gasket on the anchor hole and insert the security bolt and washers (Fig. 5a). Do not fully tighten yet.
- ⚠ Ensure that the center hole in the Multi Pad lines up with the anchor point thread in the roof.
- Repeat for all 4 anchor points (Fig. 5b).

Fig. 5a

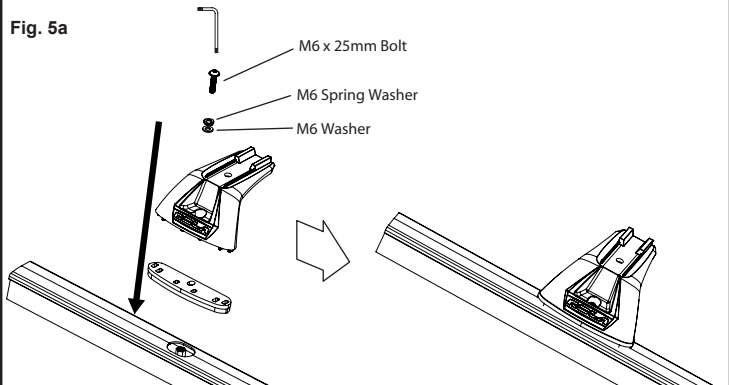
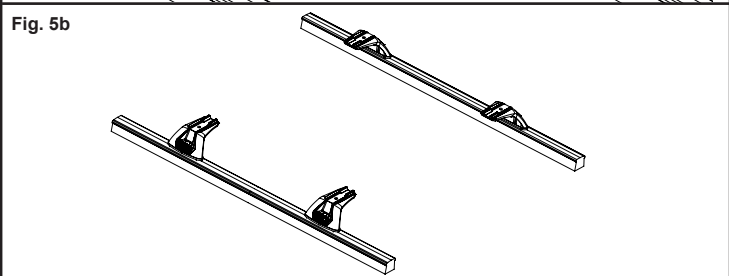


Fig. 5b



STEP 4: Fit Cross Bars

- Place the crossbar onto the end supports ensuring that the end supports are located into the cutouts on the underside of the crossbar. (Refer to Fig. 6a)
Check that the cross tube has equally distanced overhang on either side from the end support.
- Insert the M8 nut into the cavity on the Commercial Slug. (Refer to Fig. 6b).
- Insert the Commercial Slug into the cross tube, and align it so that the M8 nut in the Commercial Slug and the hole at the bottom of the end support line up (Fig. 6b).
- Secure the cross tube to the end support by screwing the M8x20mm bolt through the hole in the end support and up into the nut that is located in the cavity of the Commercial Slug. (Refer to Fig. 6b).
- Using a 13mm Spanner, full tighten the 20mm bolt on the underside of the end support (Fig. 6b).
Using the Security Key, tighten the security bolts to approximately 7Nm of torque or a firm hand-tightness (Fig. 6b).
- Insert an end cap into both ends of the cross tube (Fig. 6b).
- Ensure all fasteners are securely tightened.

Fig. 6a

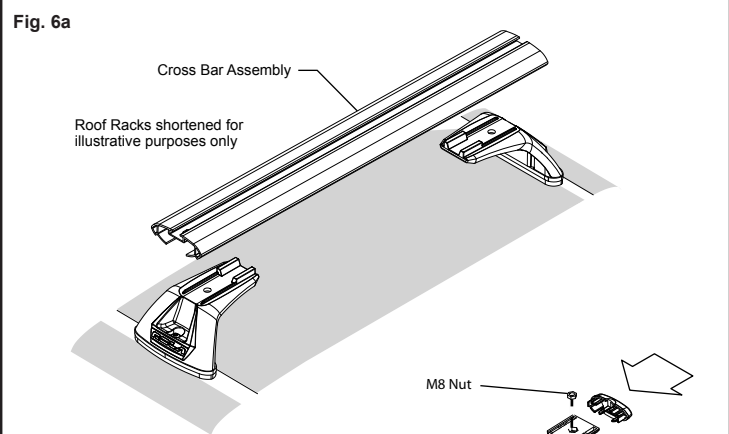
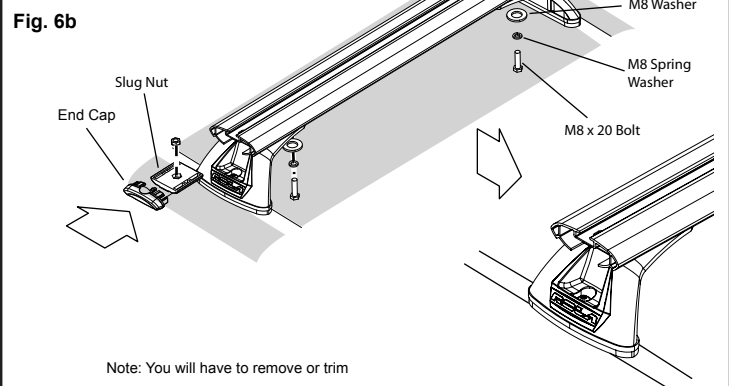


Fig. 6b



STEP 5: Using the Roof Racks

Refer to 'Care for your Racks' to maintain your Roof Racks.
To load accessories into the Channel of the Cross Bars, remove the end cap from the end of the cross tube.
Once the accessories have been loaded, re-insert the end cap back into the end of the cross tube.
Note: You will have to remove or trim the Buffer Strip to mount accessories
Intermittently check that all Screws and Bolts are sufficiently tightened whilst the Roof Racks are in use.

FAILURE TO FOLLOW THESE INSTRUCTIONS WILL VOID WARRANTY