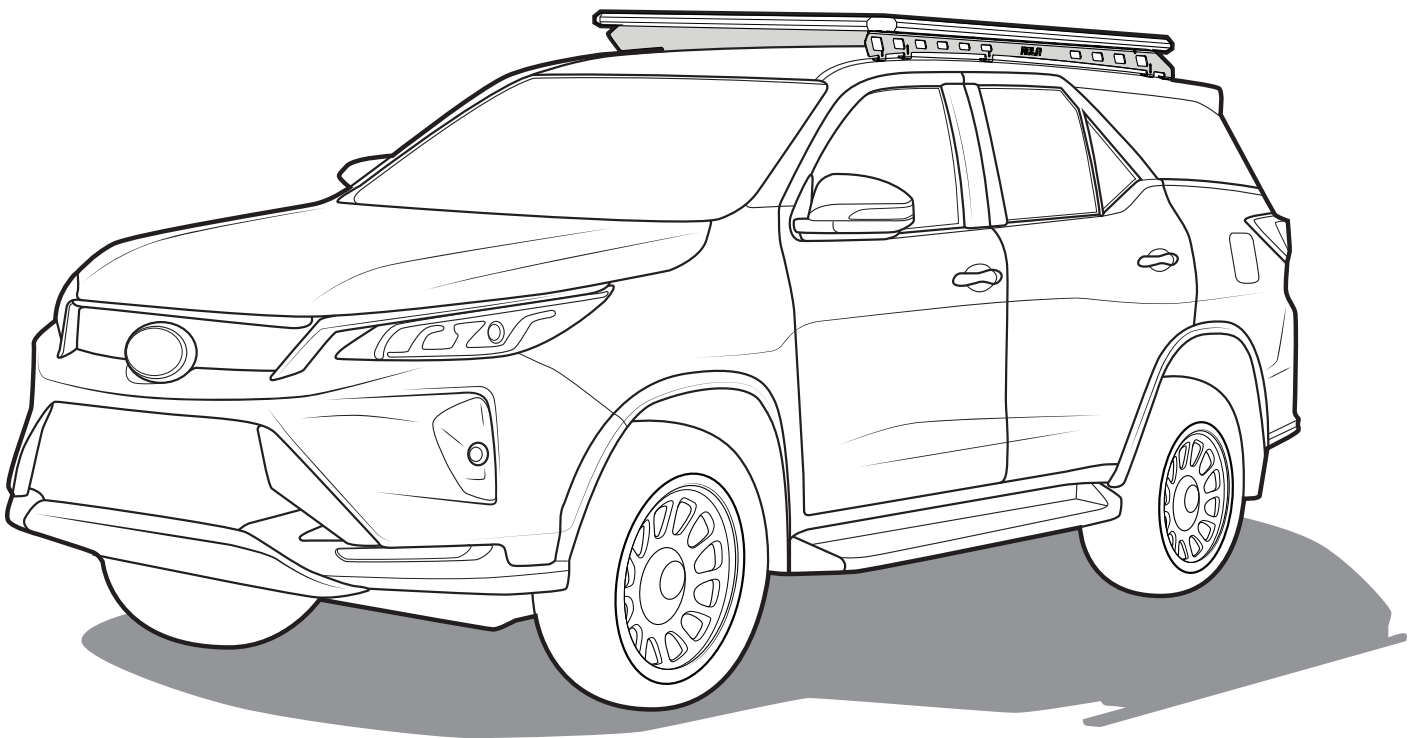


RIDGE MOUNT

by **ROLA**[®]



CONTENT - CHECK ALL PARTS ARE CORRECT BEFORE PROCEEDING

A		Ridge Mount (pair)	1
B		Stud plate	6
C		M6 Nut Hex with Washer	10
D		Washer 1/4x5/8 Flat Steel	20
E		M6x25mm Cap Screw	10
F		M5x20mm Cap Screw	4
G		M5 Washer	4
H		Washer 1/4x3/4	4
I		M5 Nyloc Nut	4
J		M8 Cap Screw	12
K		M8x16mm Washer	36
L		M8 Nyloc Nut	24
M		Butyl Patch	28
N		Interlocking Block	3

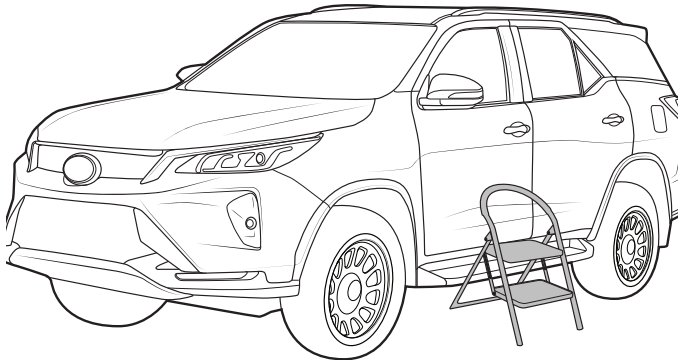
Tools required:

- 3, 5 and 14mm allen tool.
- 13mm, 10mm socket wrench.

- Cleaning products.
- Step ladder.

A

Move to the side of the vehicle. Use a step ladder to get access to the vehicle roof. This will be required at a later stage.



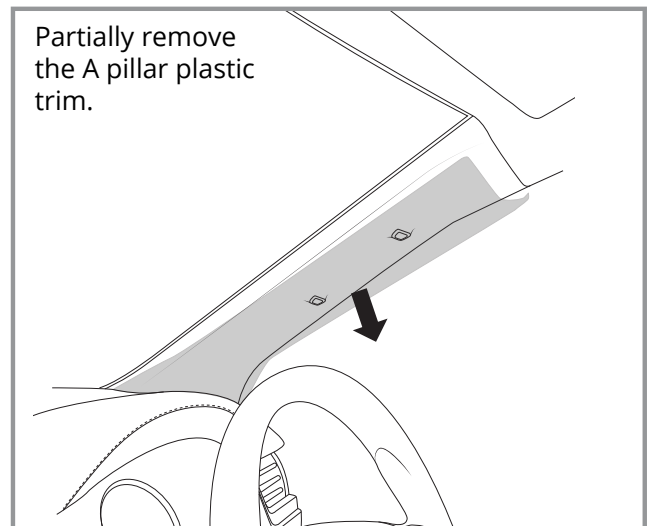
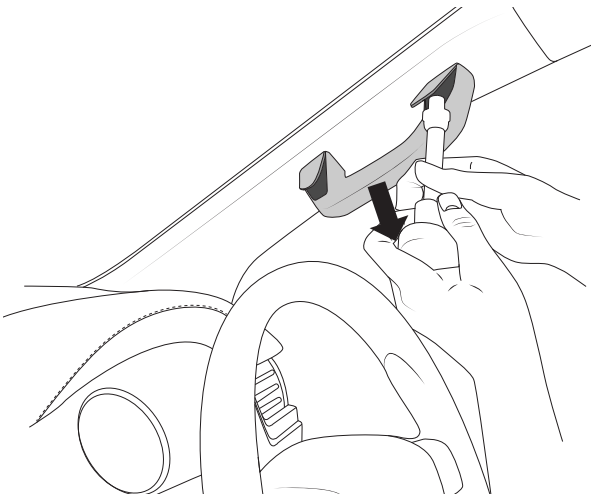
WARNING:

Disconnect battery before removing roof liner. To ensure all power has dissipated from the capacitors pump the brakes a few times and turn the lights on and off.

ROOF LINING REMOVAL instructions

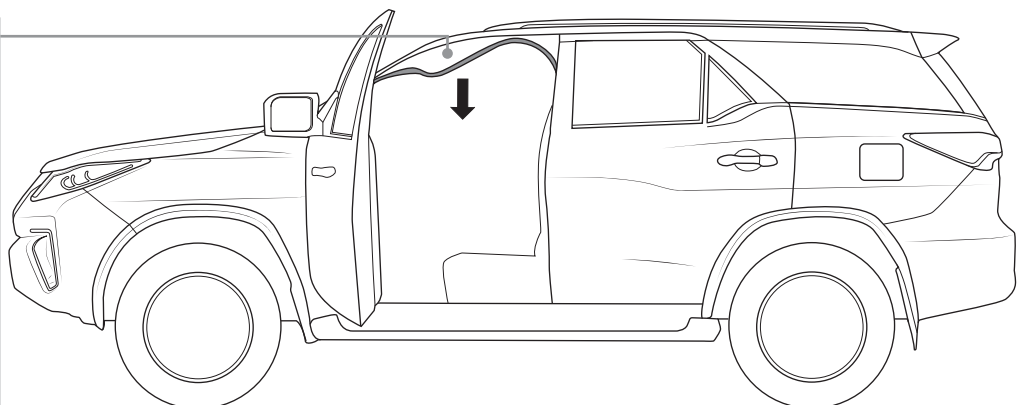
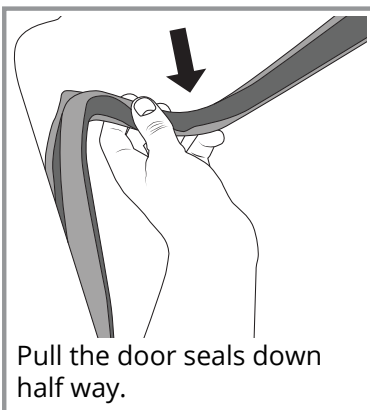
1

Be sure battery is disconnected. Unscrew and remove the grab handles from the A-pillar.



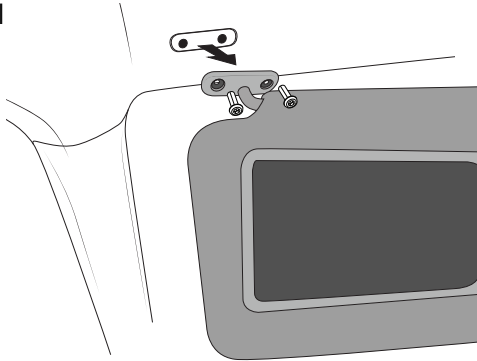
2

Partially remove the door seal from the front door as shown.

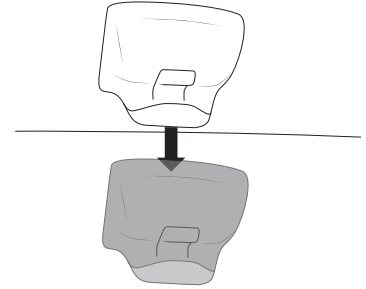


3

Remove the visors. There will be a clip covering the two screws on the left, gently pry around the clip and it will release, then unscrew the two PH2 screws to remove.

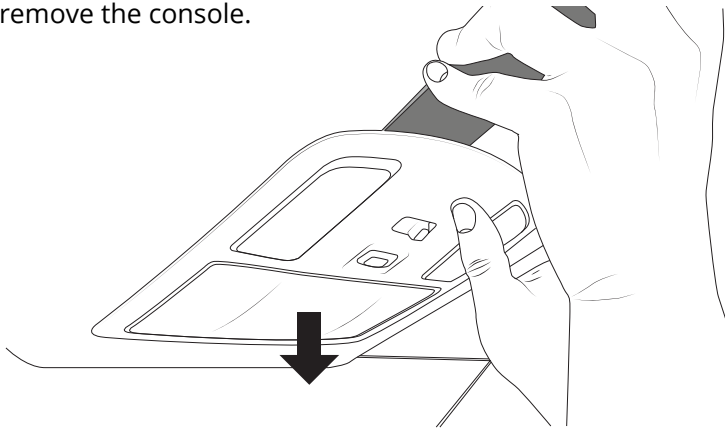


One side of the visor is held in place with a clip. To remove this clip, twist it anti clockwise and pull it out.

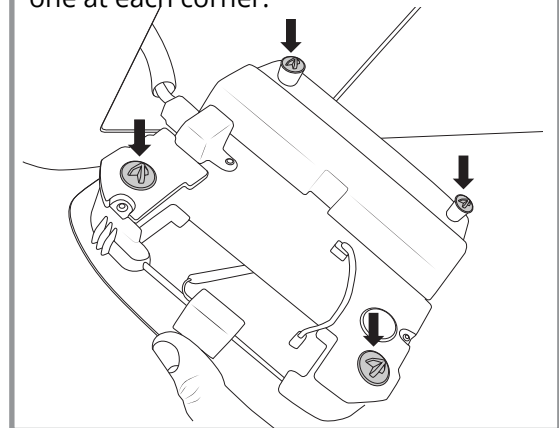


4

Remove the centre roof console. Pry an edge up with a trim tool, applying downward force. With an edge up, hands can be used to remove the console.

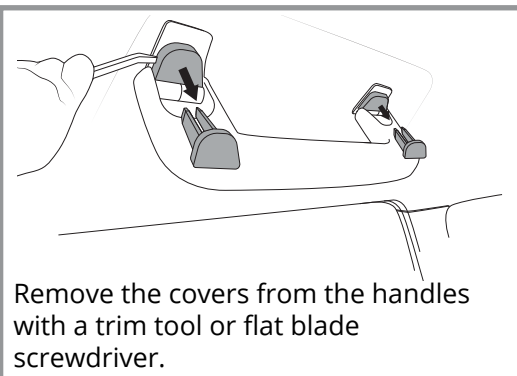


There are 4 clips holding the console in, one at each corner.

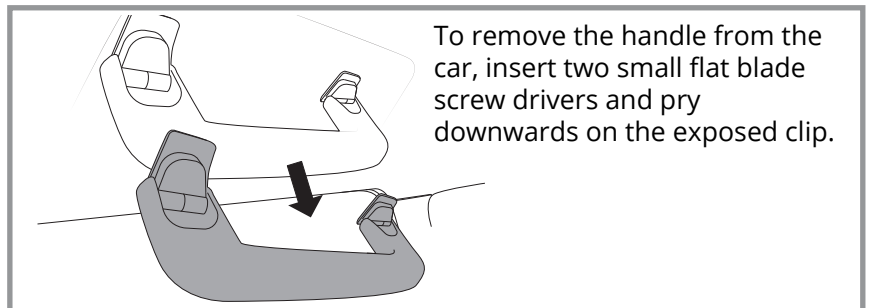


5

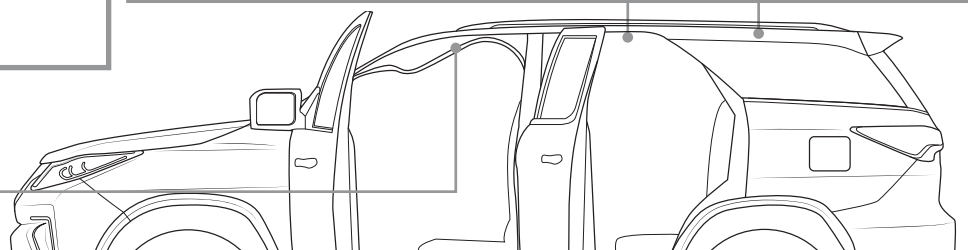
Remove the grab handles from the roof above the front and rear door.



Remove the covers from the handles with a trim tool or flat blade screwdriver.

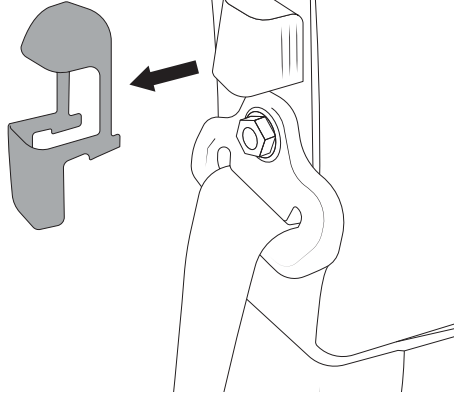


To remove the handle from the car, insert two small flat blade screw drivers and pry downwards on the exposed clip.

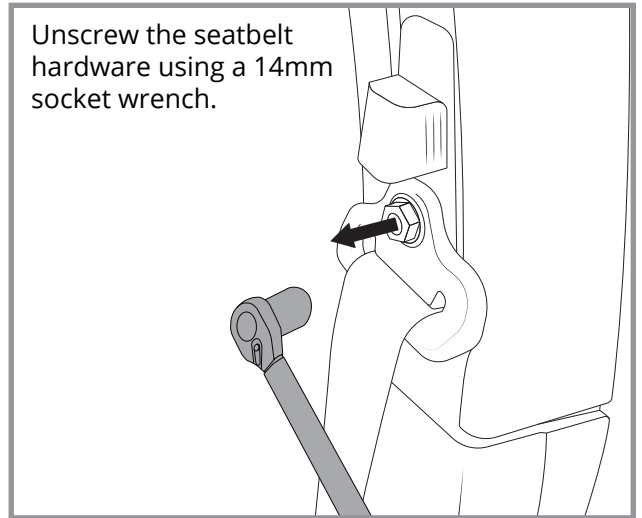


6

Remove the seat belt from the B-pillar. Start by prying the cover off, there are 3 clips around (both sides and top) and then proceed to pull it off.



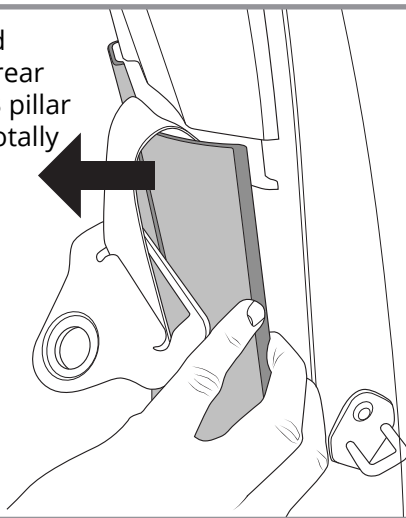
Unscrew the seatbelt hardware using a 14mm socket wrench.



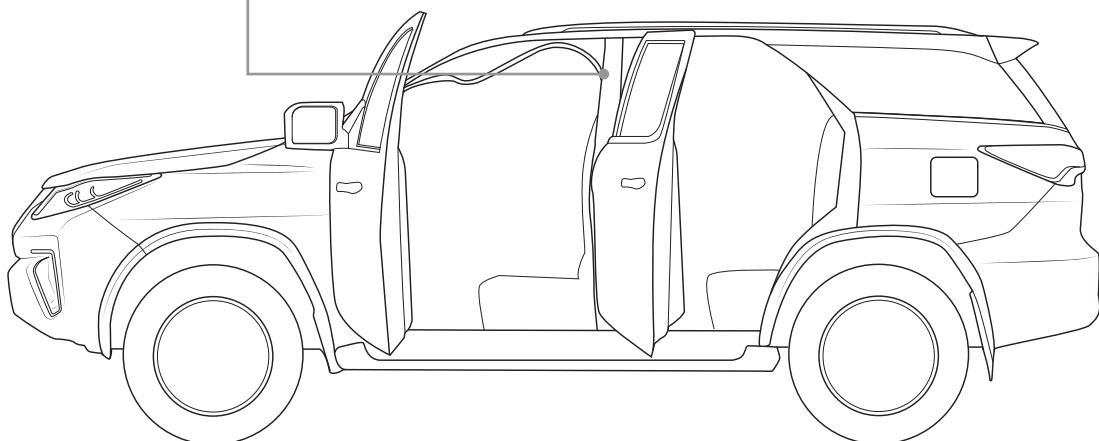
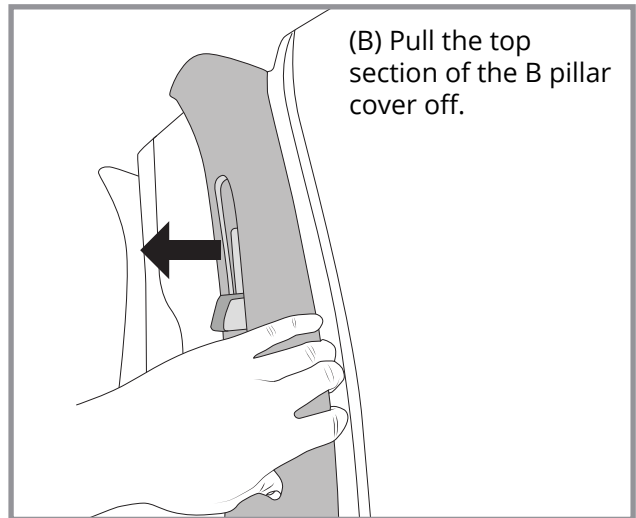
7

Remove the B pillar cover.

(A) Pull outward unclipping the rear section of the B pillar cover. Do not totally remove.



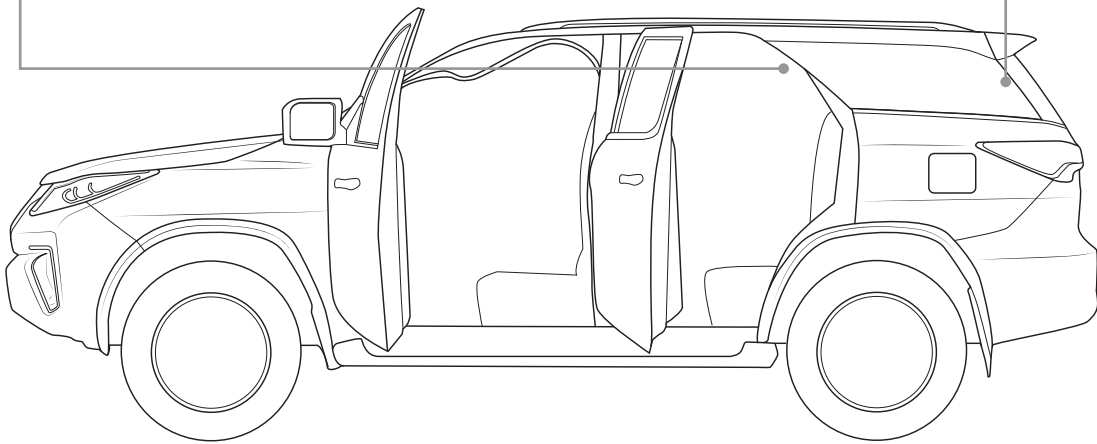
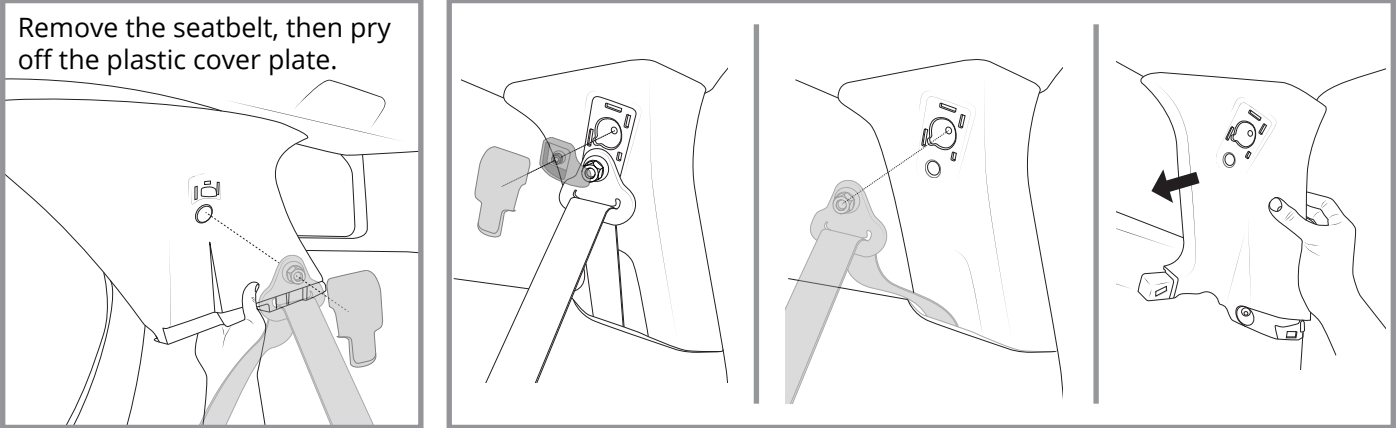
(B) Pull the top section of the B pillar cover off.



8

Remove the rear trim and seatbelts.

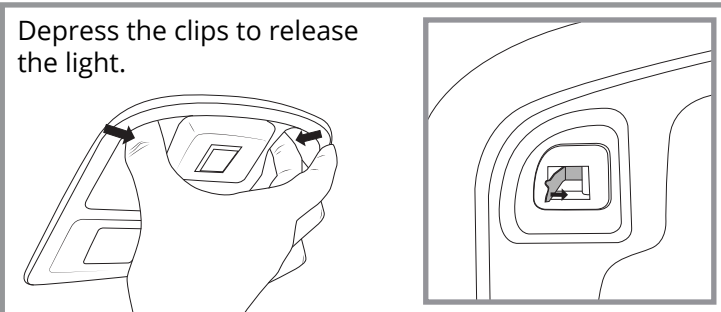
Remove the seatbelt, then pry off the plastic cover plate.



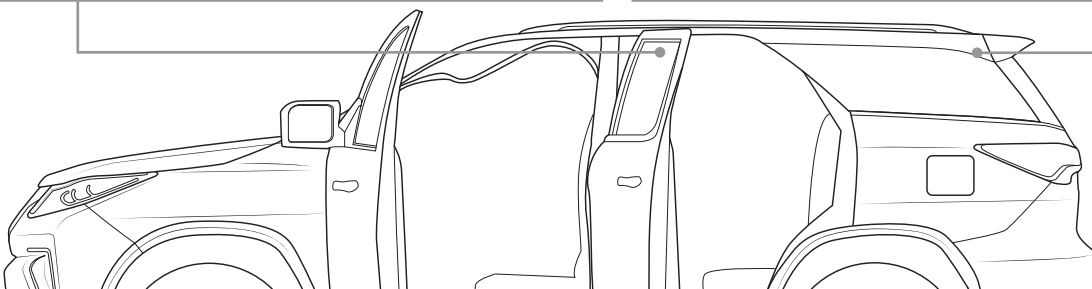
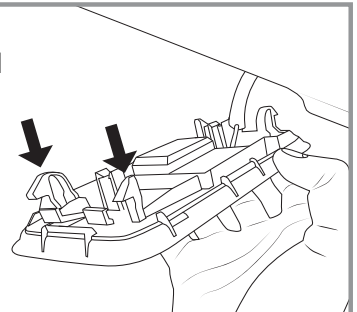
9

Remove the roof lighting as shown.

Depress the clips to release the light.

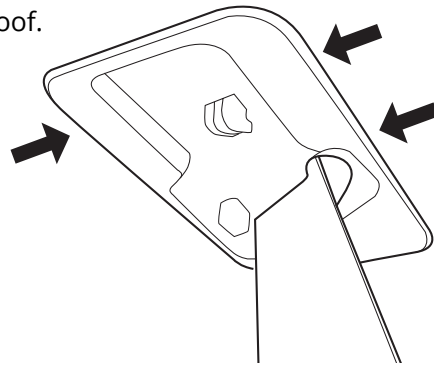


Use a trim removal tool or small flat head screwdriver, push the pointed tabs away which will allow for the light to be pulled down, do not need to disconnect the light.



10

With a trim removal tool, take out the middle seatbelt from the roof.



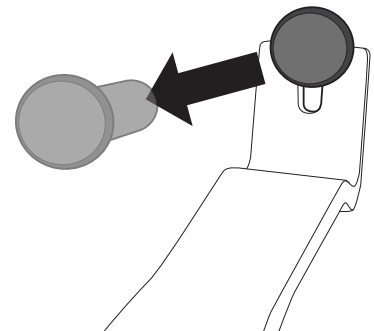
3 clips hold the seatbelt in place.



11

There will be four of these clips present throughout the roof, ensure to use a trim tool as shown above and pry carefully around the clip until it comes out.

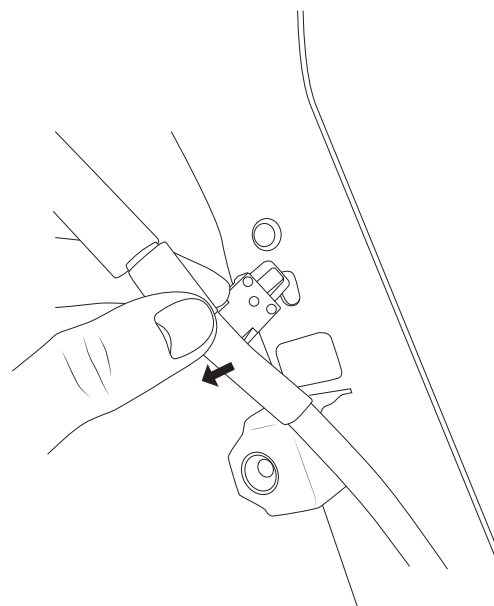
These are generally one time use clips, but if removed correctly, can be used again.



12

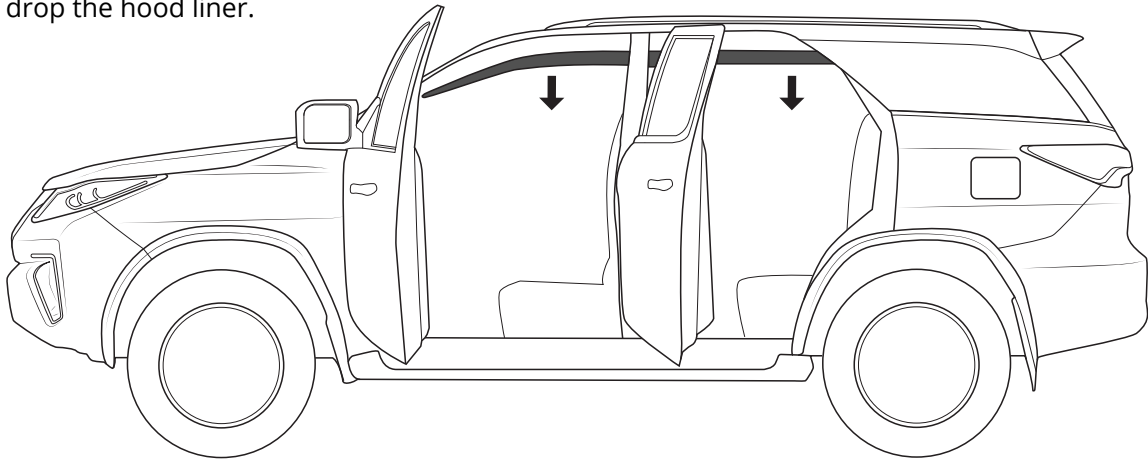
The wiring loom on the passenger side is taped onto the roof liner, hence the removal of the top clip on the A pillar is required to allow the roof liner to sag enough to gain access.

Carefully remove as shown.



13

Carefully drop the hood liner.

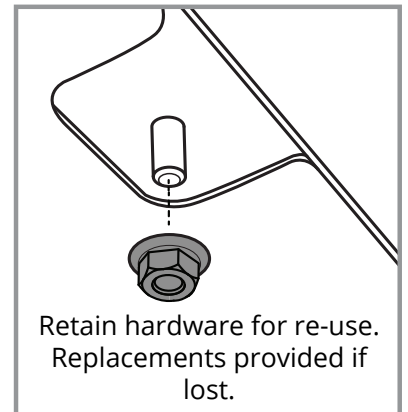
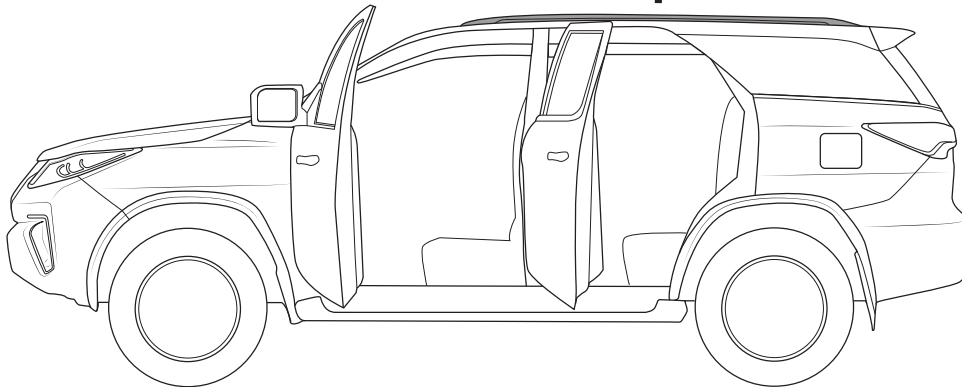
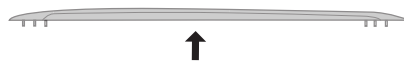


ROOF RAIL REMOVAL instructions

14

Remove the factory rails. There are 5 bolts present on each side, proceed to undo the nuts using a spanner.

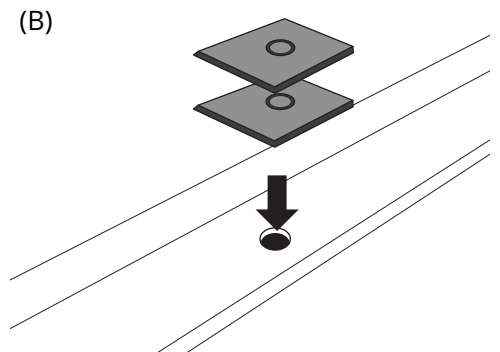
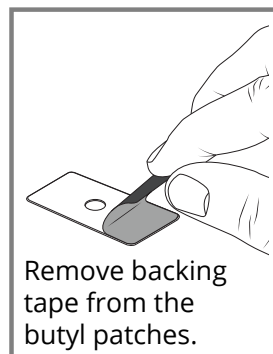
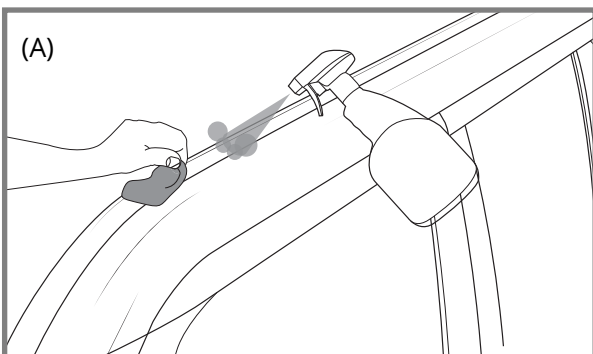
Do not need to remove the covers of the OE rail as the bolt is moulded into it.



15

(A) Clean the ditch where the factory rails have been removed.

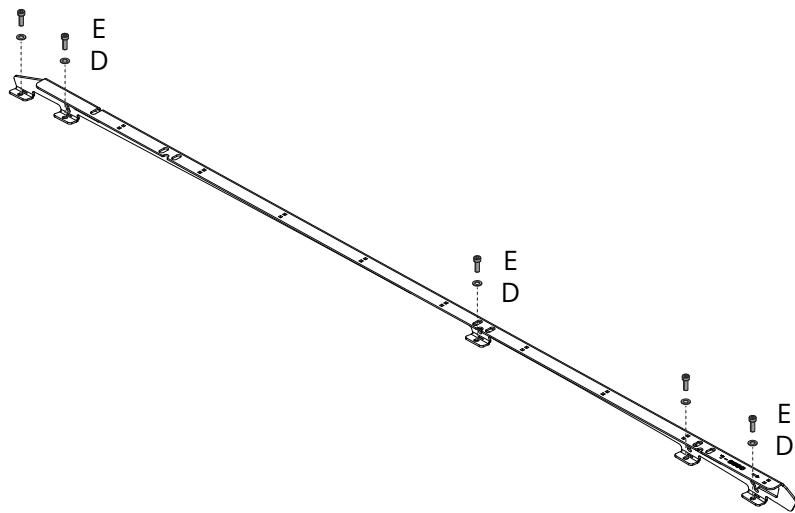
(B) Add a butyl patch to the exposed threads in the roof.



Ridge Mount instructions

16

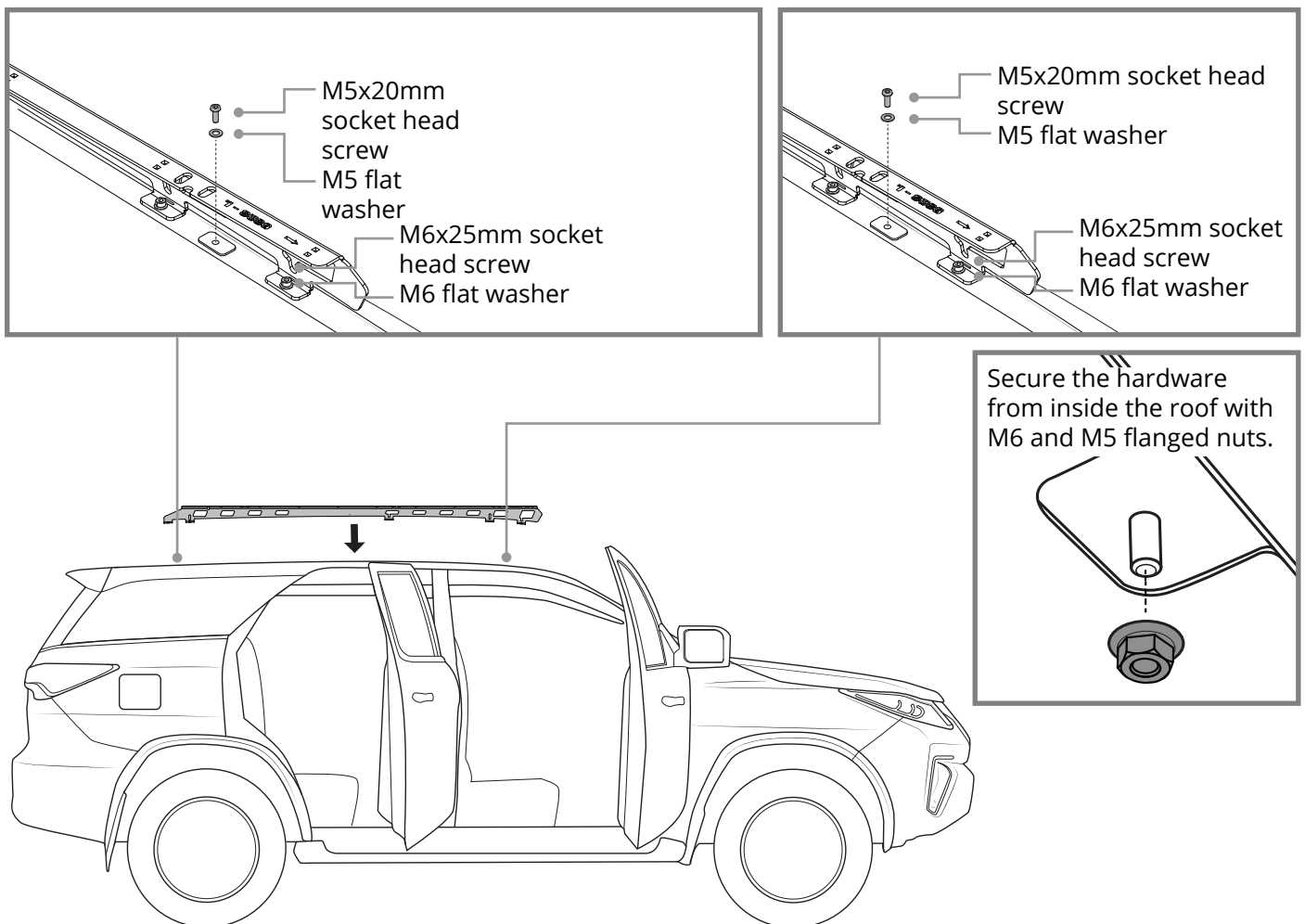
Install the kit provided M6 hardware into each rail.



17

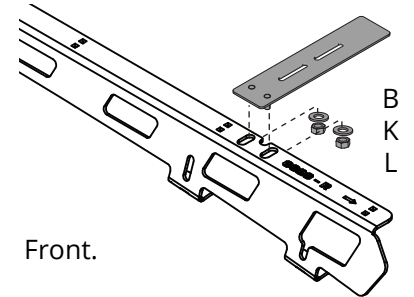
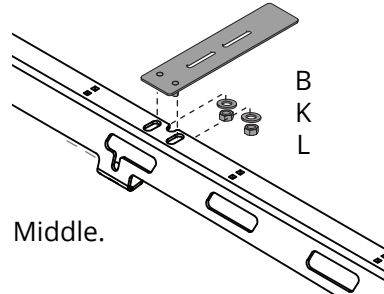
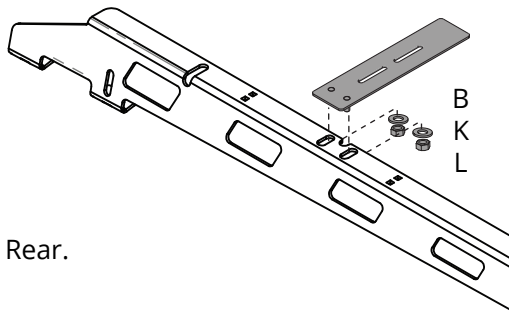
Install the Ridge Mounts.

Note: Exposed factory holes will be present after installation. Fill these with the M5 hardware provided.



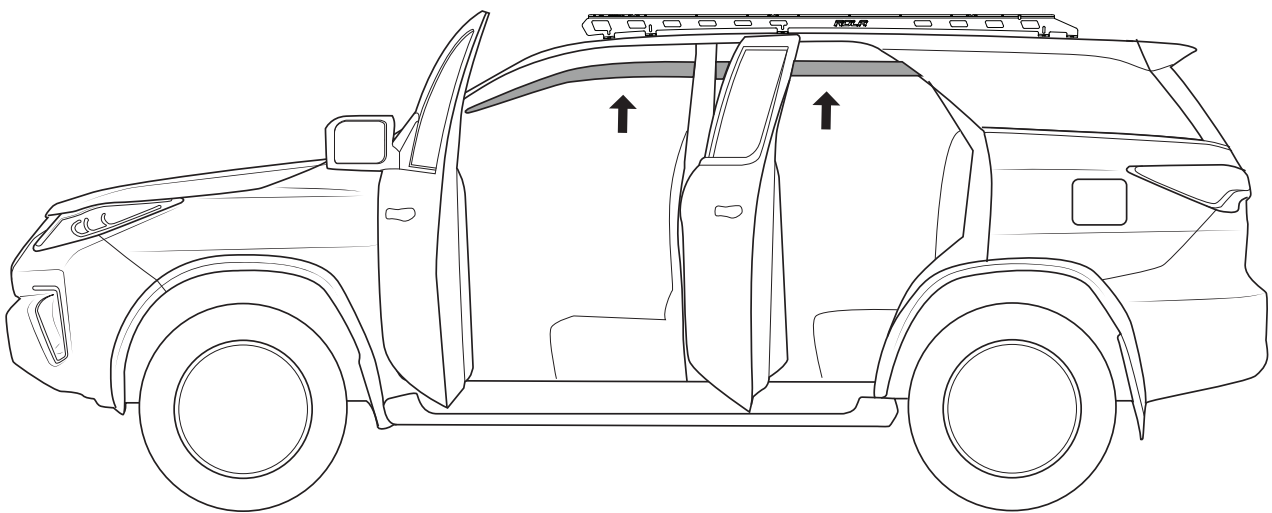
18

Install stud plates as shown.



19

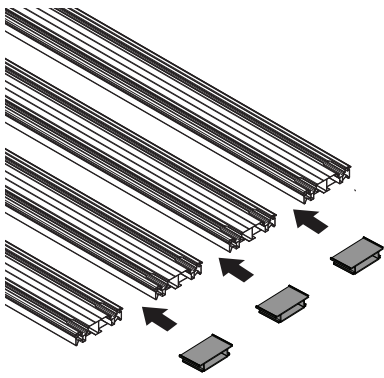
Reinstall the headliner and internal trims.



TITAN TRAY FITMENT - as per Titan Tray instructions

20

MKIII

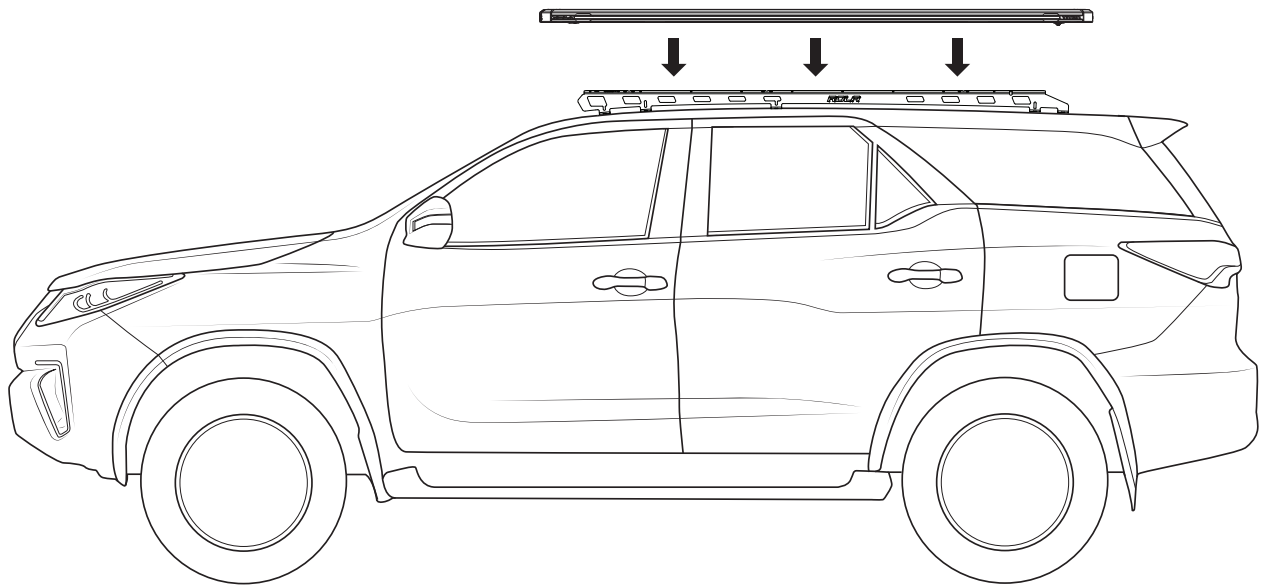
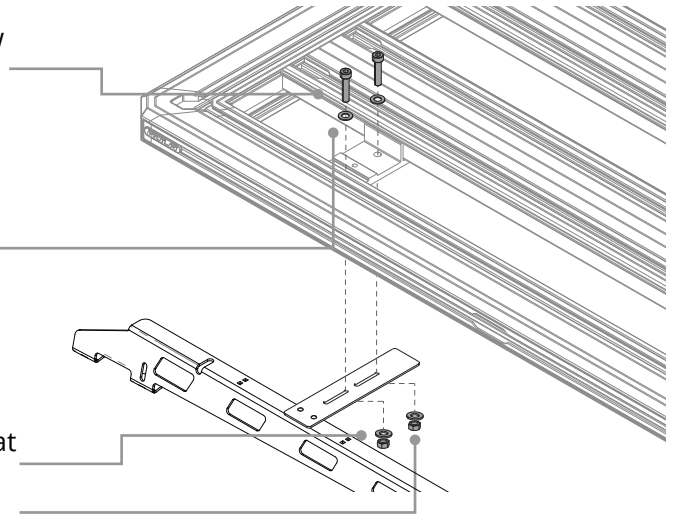


Install the interlocking blocks, as per Titan Tray Fitting Instructions.

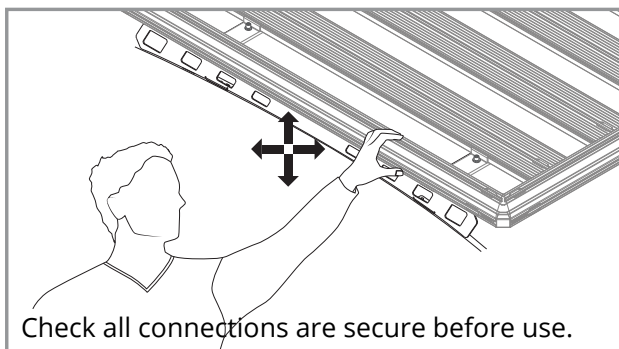
M8 Cap screw

M8x17mm Flat washer

M8x16mm Flat washer
M8 Nyloc nut

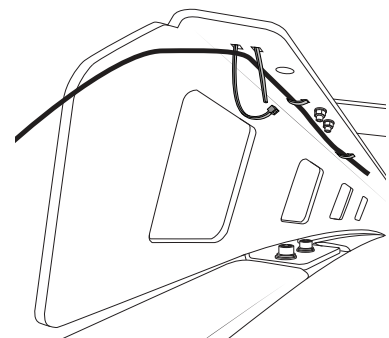


Note:



Check all connections are secure before use.

Wiring can be run and secured on the underside of the Ridge Mount rail as shown.



IMPORTANT - READ BEFORE USE

Please ensure the system is fitted in accordance with the fitting instructions. It is important that you observe all outlined below.

**LOAD RECOMMENDATIONS**

- Routinely and regularly check the proper functioning of the system. Check all fixtures at regular intervals.
- Do not use an automatic carwash with system installed.
- Maximum load capacity of the system is 400kg under static conditions.
- Maximum load capacity of the system is 100kg under dynamic including off-road conditions.
- Do not exceed vehicle manufacturers recommended load rating if it is lower than the maximum load capacity specified in this document (i.e., 100kg).
- Ensure any load carried is evenly distributed.
- Actual load on vehicle Roof (Refer to owner's manual) = Weight of Roof rack system / Ridge Mount + Weight of Tray + Weight of cargo.
- Actual load on rack system (Refer to product instructions) = Tray weight + cargo.

WARRANTY INFORMATION

Rola warrants that, subject to exclusions and limitations below, the Ridge Mount system will be free from defects in materials and workmanship for a period of 5 years commencing on the date of sale by the authorized Rola stockist to the original purchaser of the system.

If a defect appears in the Ridge Mount system before the end of the warranty period and Rola finds that the defect is in materials or workmanship, Rola will, in its sole discretion, either:

1. Repair the Ridge Mount or the defective component of the Ridge Mount system free of charge
2. Replace the Ridge Mounts or the defective component of the Ridge Mount system; or
3. Refund the purchase price of the Ridge Mount system to the original purchaser.

Rola reserves the right to change the design, specifications or composition of the Ridge Mount system without notice and without liability.

Rola reserves the right to replace defective products or components with products or components of similar quality, grade and composition, where an identical product or component is not available. Goods presented for repair may be replaced by refurbished goods of the same type rather than being repaired. Refurbished parts may be used to repair the goods.

The 5 year warranty does not apply where:

1. The Ridge Mount system is not installed in compliance with the fitting instructions provided
2. The Ridge Mount system is not used as intended or designed
3. Any part of the Ridge Mount system is used with other products or components not intended to be used in conjunction with the Ridge Mount system
4. The Ridge Mount system has been on-sold or assigned by the original purchaser
5. The Ridge Mount system has been modified or repaired by someone other than Rola or an authorized Rola stockist
6. Rola cannot establish any fault after inspection of returned product
7. The Ridge Mount system has been subject to abnormal conditions, including fire, water, humidity, pressure, stress or similar
8. The defect in the Ridge Mount system has arisen due to abuse, misuse, neglect or accident
9. The defect in the Ridge Mount system has arisen due to the unlawful or unusual operation of the vehicle to which it is fitted
10. The defect in the Ridge Mount system has arisen due to the purchaser's failure to properly assemble, install, fit, maintain or use the Ridge Mount system in accordance with the specifications and instructions provided by Rola.

For safety and use instructions, please refer to any General or Specific Fitting Instructions and Warning & Care Instructions enclosed within the Ridge Mount system or on our website at www.rola.com.au.

This warranty does not extend to fair wear and tear. Warranty claims can be made by contacting Rola directly using the details below. A warranty claim must be accompanied by proof of purchase (such as receipt), details of the alleged defect and appropriate documentation (such as historical and maintenance records where appropriate). The customer must make the product available to Rola or its authorized repair agent for inspection and testing. If such inspection and testing finds no defect in the product, the customer must pay Rola usual costs of service work and testing. It is the purchaser's responsibility to arrange and pay to return the product or component to the place of purchase. The purchaser may seek reimbursement from Rola for the cost of such activities, providing Rola notifies the purchaser in writing that a warranty claim is justified. Any such claims made must be in writing via post or email.

The benefits of this warranty are in addition to any rights and remedies imposed by Australian State and Federal legislation that cannot be executed. Nothing in this warranty is to be interpreted as excluding, restricting or modifying any State or Federal legislation applicable to the supply of goods and services which cannot be so excluded, restricted or modified. Our goods come with guarantees that cannot be excluded under the Australian Consumer Law. You are entitled to a replacement or refund for a major failure and for compensation for any other reasonably foreseeable loss or damage. You are also entitled to have the goods repaired or replaced if the goods fail to be of acceptable quality and the failure does not amount to a major failure. Rola makes no express warranties or representations other than set out in this warranty.