

Maximum Carrying Capacity: 2-Bars: 60kg; 1-Bar: 30kg

### Parts List: (Refer to Fig.1)

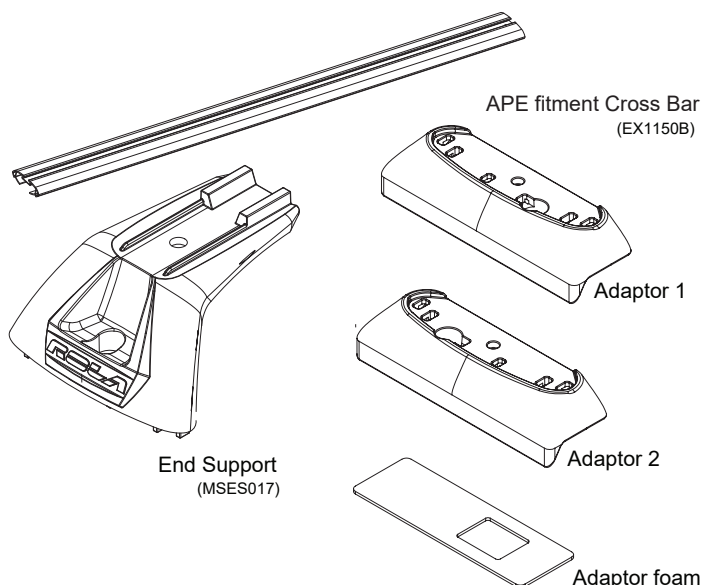
Item	Description	Qty.
1a	Cross Bars (with Buffer Strip)	2
2	End Support	4
3	Adaptor 1	2
4	Adaptor 2	2
5	Foam	4
6	M6 Security bolt	4
7	M8 x 20 Hex bolt	4
8	M8 Nut	4
9	M8 Washer	4
10	Slug Nut	4
11	M8 x 25 Allan Bolt	4

### Prior to Assembly

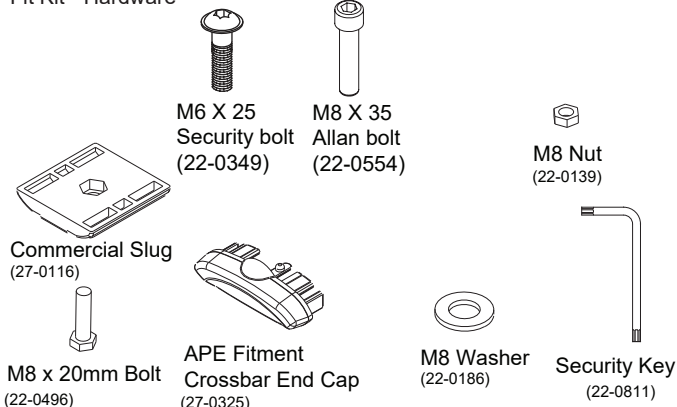
Prior to assembling, check that the kit contains all the parts you will need to fit the Roof Racks. Refer to the Parts List for guidance. Please read these fitting instructions prior to assembly.

### Using the Roof Racks

- Refer to 'Care for your Racks' to maintain your Roof Racks.
- To load accessories into the Channel of the Cross Bars, remove the end cap and trim the buffer strip as required. Install accessories, re-insert the end cap.



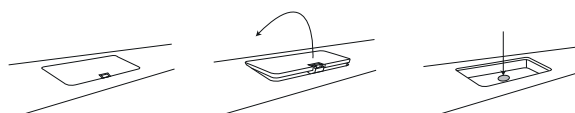
### Fit Kit - Hardware



## STEP 1

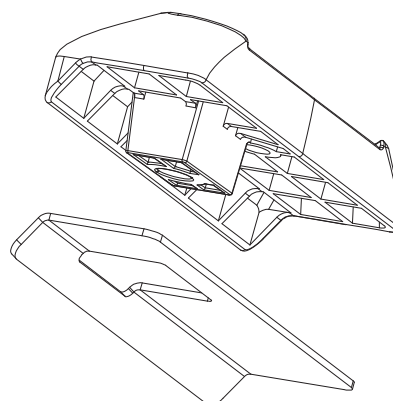
Carefully remove the 4 plastic covers to expose the anchor points.

Store caps for use if/when roof racks are removed



## STEP 2

Stick foam to the underside of the adaptors

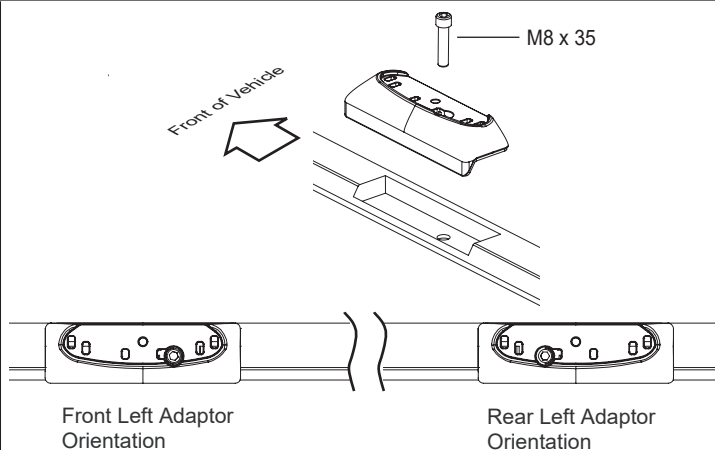


FAILURE TO FOLLOW THESE INSTRUCTIONS WILL VOID WARRANTY

### STEP 3

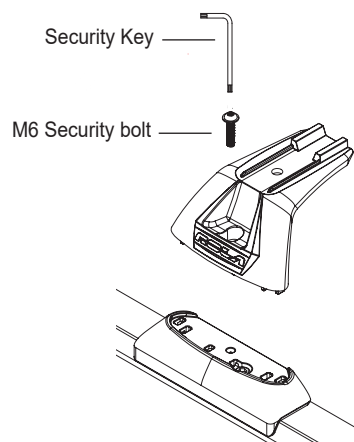
Attach adaptors to roof rail anchor points using the M8 bolt.

⚠ Ensure adaptors are in correct location and securely tightened



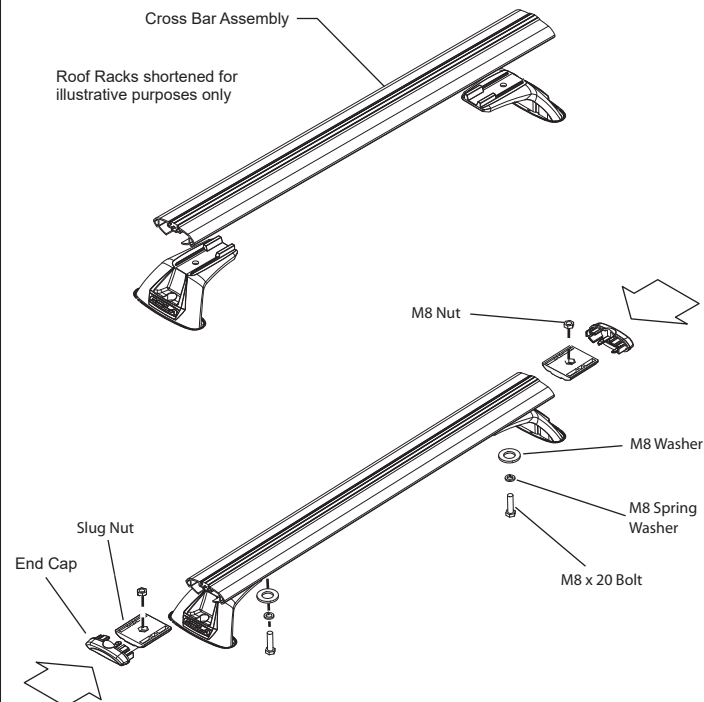
### STEP 4

- A. Place end supports onto the adaptors.  
Insert the security bolt  
Turn approximately 2-3 turns with the security key  
Do not tighten yet.



### STEP 5

- A. Place the crossbar onto the end supports ensuring that the end supports are located into the cutouts on the underside of the crossbar.  
Check that the cross tube has equally distanced overhang on either side from the end support.
- B. Insert the M8 nut into the cavity on the Commercial Slug.
- C. Insert the Commercial Slug into the cross tube, and align it so that the M8 nut in the Commercial Slug and the hole at the bottom of the end support line up.
- D. Secure the cross tube to the end support by screwing the M8x20mm bolt through the hole in the end support and up into the nut that is located in the cavity of the Commercial Slug nut.
- E. Using a 13mm Spanner, full tighten the 20mm bolt on the underside of the end support.  
Using the Security Key, tighten the bolts to approximately 7Nm of torque or a firm hand-tightness.
- F. Insert an end cap into both ends of the cross tube



Intermittently check that all Screws and Bolts are sufficiently tightened whilst the Roof Racks are in use.

**FAILURE TO FOLLOW THESE INSTRUCTIONS WILL VOID WARRANTY**

Note: You will have to remove or trim the Buffer Strip to mount accessories