



FITTING INSTRUCTIONS



PRODUCT :

PIAK SIDE RAILS

VEHICLE MODEL :

MITSUBISHI TRITON 2024

PRODUCT PART NUMBER :

PK402MT24

FITTING TIME :

Approx. 1 hours

TABLE OF CONTENTS

Page

Tools Required	5
Part List	5
Component Overview	6
Toque Setting of Fastener	6
Fitting Procedure	7

MAINTENANCE AND CARE:

To ensure continued safety and correct operation of the PIAK Products. It must be routinely inspected and regularly serviced (including bolt torque checked for correct tension) by an appropriately qualified or experienced person.

The high tensile fasteners supplied with this product were used to achieve the specified rating. If replacement of the fasteners is required, fasteners of the same rating and quality must be used.

EQUIPMENT :

These safety products should, at a minimum, be used when fitting or working on the product.



Protective Glasses



Hearing Protection

Installation in accordance with these instructions and adherence to warnings will ensure compliance with relevant regulatory and safety standards as at the revision date.

BY USING THIS PRODUCT YOU ACKNOWLEDGE AND AGREE THAT TO THE EXTENT PERMITTED BY LAW PIAK WILL NOT ACCEPT LEGAL OR OTHER LIABILITY FOR ANY LOSS, INJURY OR DAMAGE CAUSED BY INCORRECT OR INAPPROPRIATE INSTALLATION OR USE OF THE PRODUCT.

TOOLS REQUIRED

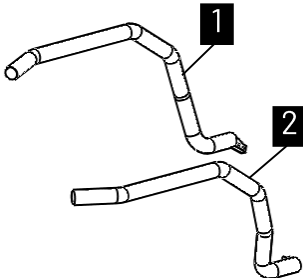
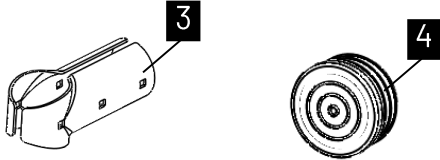
1. Torque , Socket wrench

2. 8 mm. drill bit

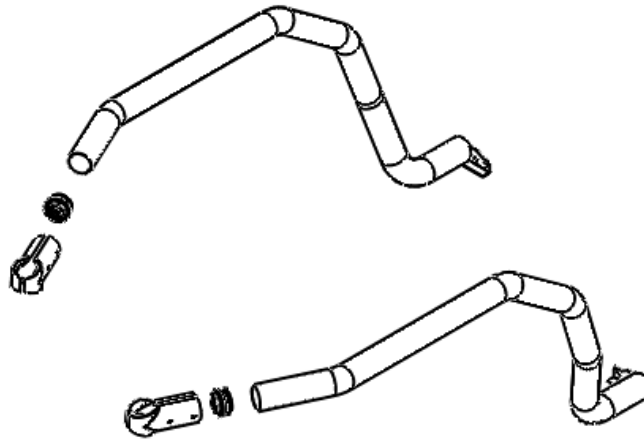
3. Open spanner

PART LIST

Important : Check contents of fitting kit before commencing fitment and report any discrepancies.

SIDE RAIL			
ITEM	COMPONENT NAME	Q'ty	REMARKS
1	Side Rail (RH)	1	
2	Side Rail (LH)	1	
FASTENERS			
ITEM	COMPONENT NAME	Q'ty	REMARKS
3	Side Rail Clamp (2.5") 85 degree (LH/RH)	2	
4	Rubber Cover 2.5"	2	
5	Button Head Bolt M8x85x1.25	6	
6	Flat Washer M8 OD16	12	
7	Nylon Nut M8x1.25	6	
8	Hex Bolt M8x35x1.25	4	
9	Spring Washer M8	4	
10	Flat Washer M8 OD22	8	
11	Flange Nut M8x1.25	4	

COMPONENTS OVERVIEW



TORQUE SETTING OF FASTENER

Mounting bolts must be tightened to torque's specified following ;

Bolt Diameter (mm.)	Class 8.8		Class 10.9	
	Torque (Nm.)	Torque (ft-lb.)	Torque (Nm.)	Torque (ft-lb.)
M6	10.5	7.7	15	11.1
M8	25.5	18.8	36.5	26.9
M10	50.5	37.2	72.2	53.3
M12	88	64.9	126	92.9
M14	140	103	200	148

FITTING PROCEDURE

- 1 Locate the vehicle in a suitable area. Remove any existing steps installed on vehicle and discard.



- 2 Remove head side step to install side rails and retain the four M8 bolts, washers and nuts .

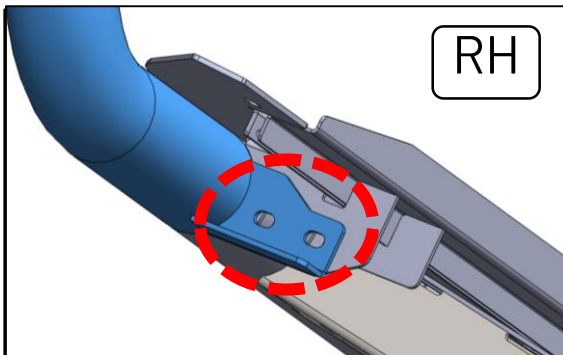


- 3 If it exists with a pair of pliers break off the step in-fill piece and file of any sharp edges.



- 4 Connect the side rail into the side step.

FITTING PROCEDURE



- 5 Secure the side rail to the side step with a M8 hex bolt, M8 flat washer and M8 flange nut removed from the side step.



- 6 Clamp the side rail to the bull bar.



- 7 Drill three holes through the side rail using the holes in the side rail as a guide. After drilling, deburr the edges and apply rustproof paint to protect the surface.



- 8 Secure with three M8 bolts button head, flat washers and nylon nut.

Tighten all bolts with the correct torque.

Repeat in step 2-8 for the LH side

PART LIST

