



ELITE NON LOOP WINCH BAR

FITTING INSTRUCTIONS



ISUZU D-MAX 2020-2023

PK106FGLED0ELF/PKFG1LFID20E_RMB_URPMB

PK106FGLED0ELF/PKFG1LFID20E_RMB_URPO

PK106FGLED0ELF/PKFG1LFID20E_RO_URPMB

Fitting Time : approx. 3 hours

Elite Non Loop Winch Bar Isuzu D-MAX 2020-2023

RD-SP-002/FT-045

Rev.03 (10-FEB-2024)

BULL BAR SAFETY NOTICE:

INSTALLATION SHOULD ONLY BE DONE BY APPROPRIATELY QUALIFIED OR EXPERIENCED PERSONS
IN ACCORDANCE WITH THESE INSTRUCTIONS.

IT IS THE RESPONSIBILITY OF THE INSTALLER TO ENSURE THAT THE PRODUCT IS CORRECTLY FITTED.

WARNING:

- Do not attach Vehicle Frontal Protection System (VFPS) to the vehicle using anchorages not intended for this purpose. (e.g. engine mounting bolts)
- Do not use this product for any vehicle make or model, other than those specified by the VFPS manufacturer.
- Do not remove the plaque or label from the VFPS.
- Do not modify the structure of the VFPS in any way.
- The VFPS has been produced to provide continued functionality of parking sensors and other "driver assist" features as closely as possible to Original Equipment. However, as all possible road conditions and combination of other accessories fitted to the vehicle which may affect functionality characteristics cannot be anticipated, ***the driver remains responsible at all times for properly controlling the vehicle, monitoring all "driver assist" features and intervening where required to ensure the vehicle is safely operated.***

IMPORTANT INFORMATION:

- Before installing the VFPS:
 - Check that all components, as listed in the assembly table, are available.
 - Thoroughly read all instructions.
- This product or its fasteners must not be modified in any way.
- These instructions are accurate as at the revision date and do not take into account any changes made by the vehicle manufacturer to vehicle design after the revision date or other accessories that are or have been fitted to the vehicle. Piak cannot be held responsible for such changes and appropriate enquiries should be made before installation.
- Before installing, inspecting and/or maintaining the VFPS, the work space should be safe and clear of fuel, debris, electrical or other components.
- During installation:
 - It is the responsibility of the installer to confirm correct operation/clearance of all components.
 - All holes drilled shall have all burrs and swarf removed then coated with a suitable rust preventative paint.
 - Ensure that all hardware is fastened to torque list as detailed in these instructions.

MAINTENANCE AND CARE:

To ensure continued safety and correct operation of the product, the VFPS must be routinely inspected and regularly serviced (including bolt torque checked for correct tension) by an appropriately qualified or experienced person.

The high tensile fasteners supplied with this product were used to achieve the specified rating. If replacement of the fasteners is required, fasteners of the same rating and quality must be used.

If this VFPS is fitted with a hinged number plate bracket, extra care must be taken when returning back to public roads following the use of the winch or conducting a deep water crossing.

The driver must ensure that the number plate bracket is returned back to the down position allowing full visibility of the number plate when returning to public roads.

EQUIPMENT:

These safety products should, at a minimum, be used when fitting or working on the product.



Protective Glasses



Hearing Protection

Installation in accordance with these instructions and adherence to warnings will ensure compliance with relevant regulatory and safety standards as at the revision date.

Failure to adhere to these instructions may affect the roadworthiness of the vehicle or cause personal injury, death or damage to property.

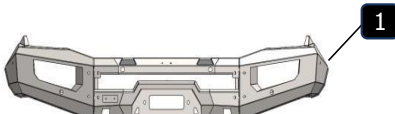
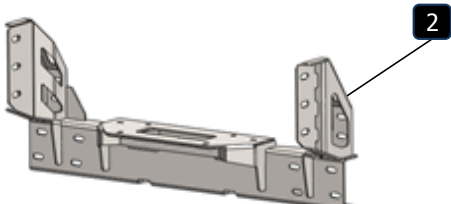
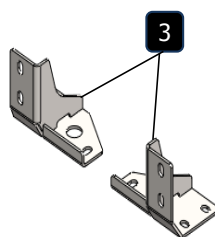
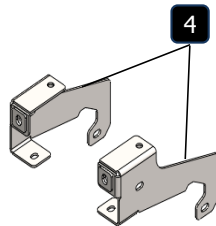
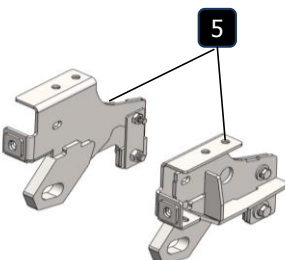
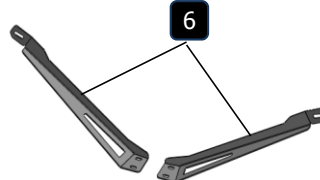
BY USING THIS PRODUCT YOU ACKNOWLEDGE AND AGREE THAT TO THE EXTENT PERMITTED BY LAW PIAK WILL NOT ACCEPT LEGAL OR OTHER LIABILITY FOR ANY LOSS, INJURY OR DAMAGE CAUSED BY INCORRECT OR INAPPROPRIATE INSTALLATION OR USE OF THE PRODUCT.

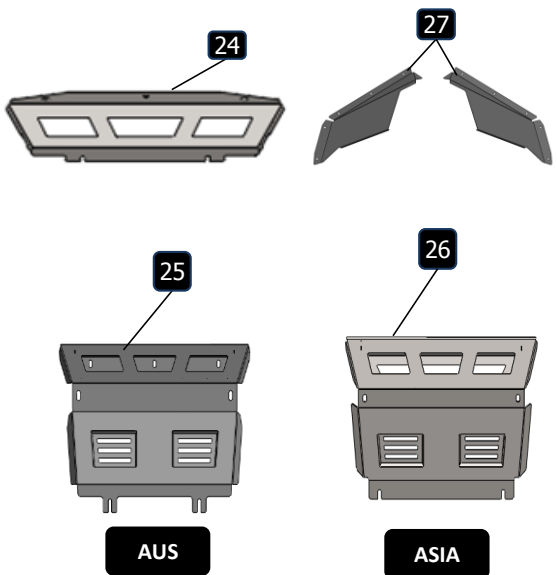
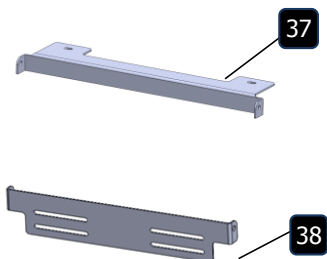
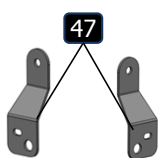
TOOLS REQUIRED


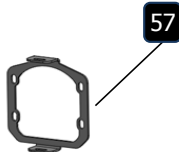
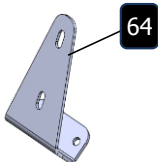
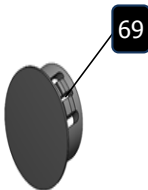


- | | | |
|-------------------------------|-----------------------------|---------------------------------------|
| 1 Metric Socket and Spanners | 2.2" Masking tape | 3. Marking pen |
| 4 Drill and metric drill bits | 5. Test lamp or multi-meter | 6. Phillip and flat head screw driver |
| 7 Torque wrench | | |

PARTS LIST

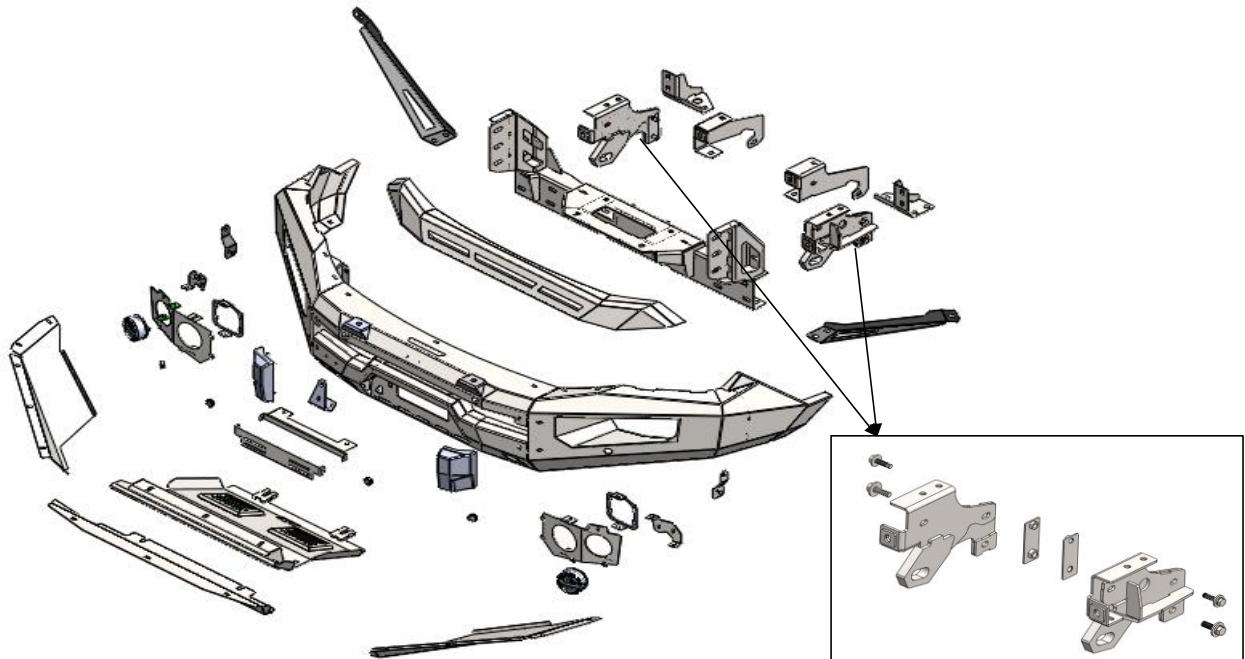
⚠ Important : Check contents of fitting kit before commencing fitment and report any discrepancies.

Steel Bull Bar			
Item	Component Name	Q'ty	Remarks
1	Winch Bull Bar	1	
Chassis Mounting Bracket			
Item	Component Name	Q'ty	Remarks
2	Chassis Mount Bracket	1	
3	Chassis Support Bracket upter (RH&LH)	2	
4	Chassis Support Bracket inside (RH&LH)	2	
5	Chassis Support Bracket & Recovery Point (RH&LH)	2	
6	Wing Bracket (RH&LH)	2	
7	Hex Bolt M10x35x1.25 EDP	12	
8	Flange Nut M10x1.25 EDP	8	
9	Spring Washer M10 EDP	12	
10	Flat Washer M10 OD27 EDP	20	
11	Hex Bolt M10x100x1.25	2	
12	Hex Bolt M10x30x1.5	6	
13	Hex Bolt M10x35x1.5	10	
14	Hex Bolt M10x35x1.25	4	
15	Flat Washer M10 OD27	30	
16	Flat Washer M10 OD20	8	
17	Hex Nut M10x1.5	10	
18	Flange Nut M10x1.25	6	
19	Spring Washer M10	22	
20	Hex Bolt M12x35x1.5	6	
21	Flat Washer M12 OD33	12	
22	Spring Washer M12	6	
23	Hex Nut M12x1.5	6	

Protection Plate			
Item	Component Name	Q'ty	Remarks
24	Top Protection Plate center	1	
25	bottom Protection Plate center AUS Version	1	
26	bottom Protection Plate center ASIA Version	1	
27	Protection Plate LH/RH	2	
28	Hex Bolt M6x20x1.0	13	
29	Spring Washer M6	13	
30	Flat Washer M6 OD20	13	
31	Cage Nut M6x1.0x3T	13	
32	Hex Bolt M10x30x1.25	4	
33	Hex Bolt M10x30x1.5	5	
34	Spring Washer M10	9	
35	Flat Washer M10 OD27	14	
36	Hex Nut M10x1.5	3	
License Plate Bracket			
Item	Component Name	Q'ty	Remarks
37	License Plate Bracket (Inner)	1	
38	License Plate Bracket (outer)	1	
39	Hex Bolt M6x20x1.0	4	
40	Spring Washer M6	4	
41	Flat Washer M6 OD20	8	
42	Flange Nut M6x1.0	4	
43	Button Head Bolt M6x20x1.0 (SUS)	2	
44	Nyloc Nut M6x1.0	2	
45	Nylon Washer M6	4	
46	Flat Washer M6 OD14 (SUS)	4	
Headlight Bracket			
Item	Component Name	Q'ty	Remarks
47	Headlight Bracket	1	
48	Hex Bolt M6x15x1.0	2	
49	Spring Washer M6	2	
50	Flat Washer M6 OD14	4	
51	Flange Nut M6x1.0	2	

Infill ID20			
Item	Component Name	Q'ty	Remarks
52	Infill ID20	1	
53	Hex Bolt M6x20x1.0	7	
54	Spring Washer M6	7	
55	Flat Washer M6 OD20	14	
56	Flange Nut M6x1.0	7	
Fog Light Bracket			
Item	Component Name	Q'ty	Remarks
57	Bracket Fog Light OE L/R	2	
58	Hex Bolt M6x15x1.0	8	
59	Hex Bolt M6x20x1.0	4	
60	Spring Washer M6	4	
61	Flat Washer M6 OD20	8	
62	Flange Nut M6x1.0	12	
63	Flat Washer M6 OD14	16	
Winch Control Plate			
Item	Component Name	Q'ty	Remarks
64	Winch Control Plate	1	
65	Hex Bolt M6x20x1.0	2	
66	Spring Washer M6	2	
67	Flat Washer M6 OD20	4	
68	Flange Nut M6x1.0	2	
Accessories			
Item	Component Name	Q'ty	Remarks
69	Sensor Plug 20.6 mm.	4	  
70	Load resistor (R-DROP)	2	
71	Pinch weld rubber seal OD15 L350mm.	2	

Components Overview



Torque Setting of Fastener

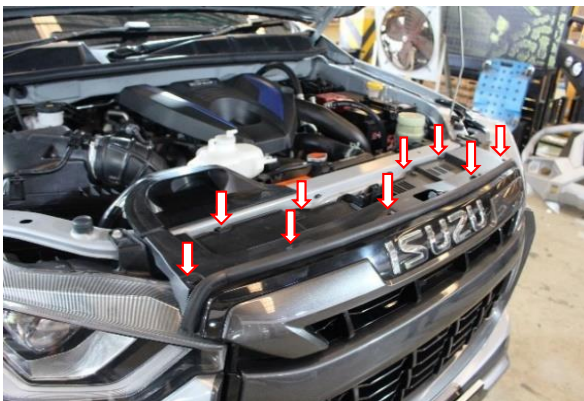
Mounting bolts must be tightened to torque's specified following ;

Bolt Diameter (mm.)	Class 8.8		Class 10.9	
	Torque (Nm.)	Torque (ft-lb.)	Torque (Nm.)	Torque (ft-lb.)
M6	10.5	7.7	15	11.1
M8	25.5	18.8	36.5	26.9
M10	50.5	37.2	72.2	53.3
M12	88	64.9	126	92.9
M14	140	103	200	148

FITTING PROCEDURE



- 1 Locate the vehicle in a suitable position.
- 2 Rest the bullbar on a surface that will not scratch the bar.

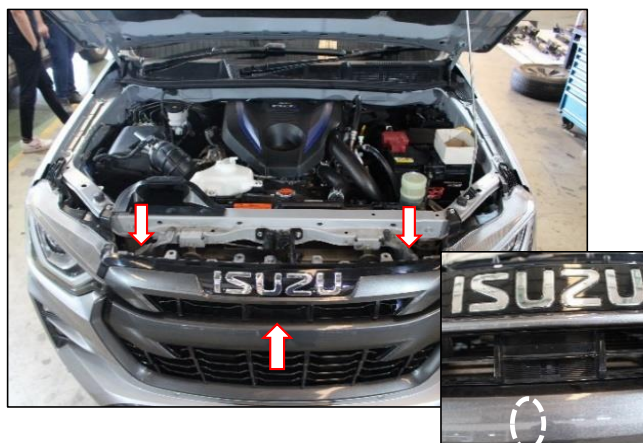


- 3 Remove the clips and the bonnet that retain the grille at the top.

***Keep for re-fitment of grille.**



- 4 Remove the OEM Plastic radiator cover the front of car.



- 5 Remove tree clips that retain the grille at the top as shown.

***Keep for re-fitment of grille.**

FITTING PROCEDURE

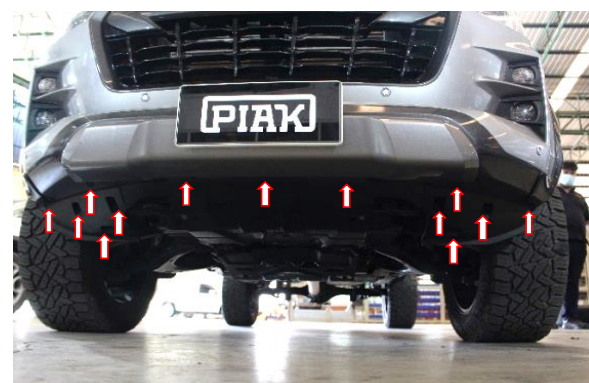


- 6 Unclip and remove the grille from vehicle and place on a soft surface.

***Keep for re-fitment of grille.**



- 7 Remove the grille from vehicle and place on a soft surface.



- 8 Remove and discard the screws retaining the lower section of the bumper.



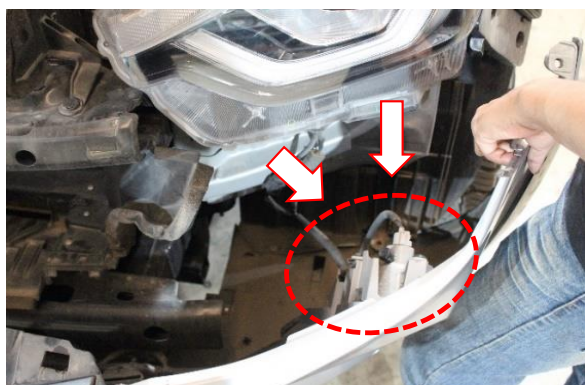
- 9 Remove and discard the screws retaining the bumper bar in the wheel arch (Both sides) .

FITTING PROCEDURE



- 10 Carefully remove the bumper from the vehicle.

If unsure about bumper removal refer to the workshop manual.



- 11 Disconnect cable parking sensor and Fog light.

***Repeat for the opposite side.**

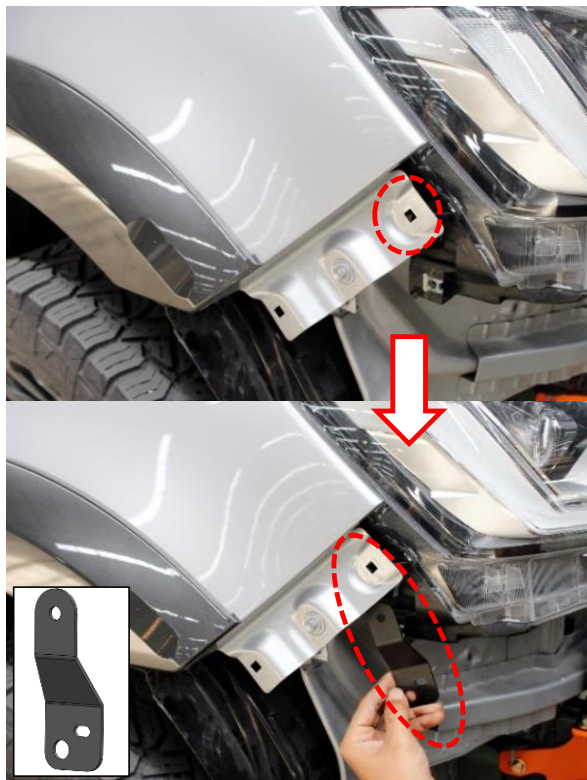


- 12 Remove the bumper support brackets both sides and chassis mounting bracket of the vehicle as shown.



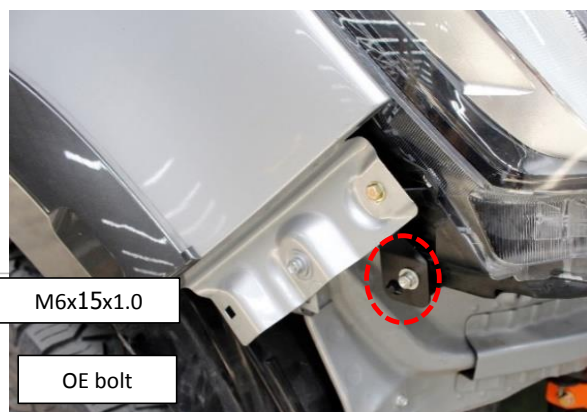
- 13 Remove front plastic cover of the vehicle as shown.

FITTING PROCEDURE



- 14 Secure with M6 bolt (M6x15x1.0), spring washer, flat washer and Flange Nut as shown.

* Repeat for the opposite side.



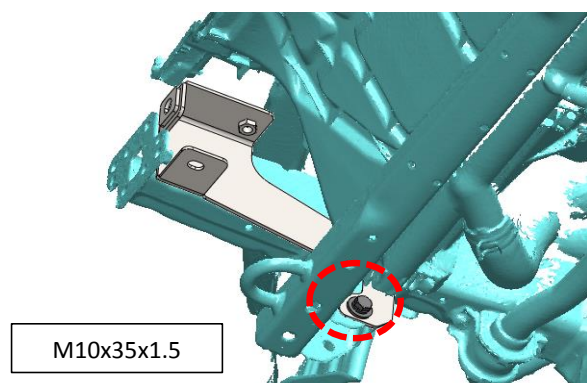
- 15 Secure with OE bolt as shown.

* Repeat for the opposite side



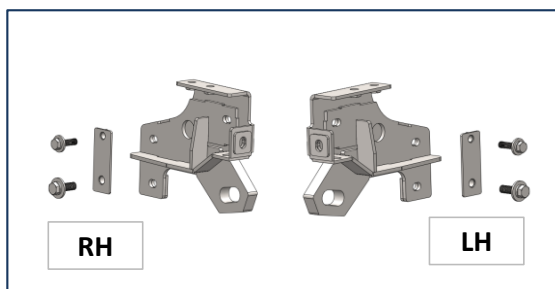
- 16 Install the chassis support bracket inside (RH&LH) at location as shown.

FITTING PROCEDURE

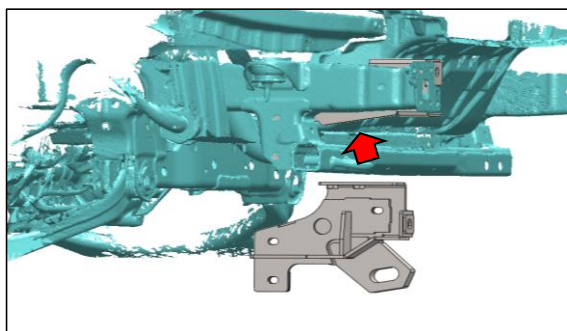


- 17** Secure chassis support bracket inside (RH&LH) with M10 bolt (M10x35x1.5), spring washer, flat washer and Hex nut as shown.

*** Repeat for the opposite side**



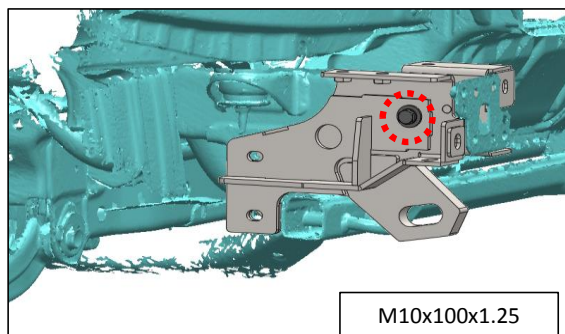
- 18** Remove bolt M10,M12 and Plate nut. as shown.



- 19** Install the Chassis Support Bracket & Recovery Point (RH&LH) at location as shown.

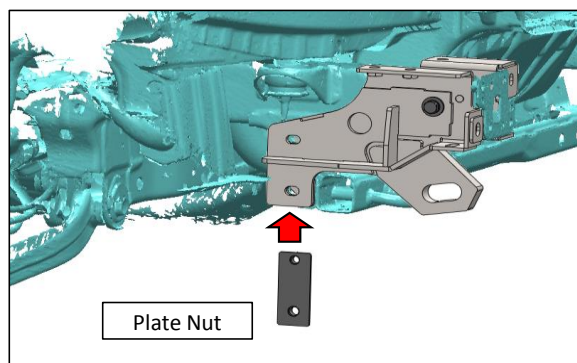
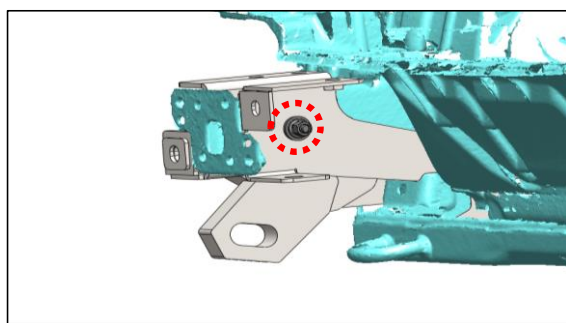
*** Repeat for the opposite side**

FITTING PROCEDURE

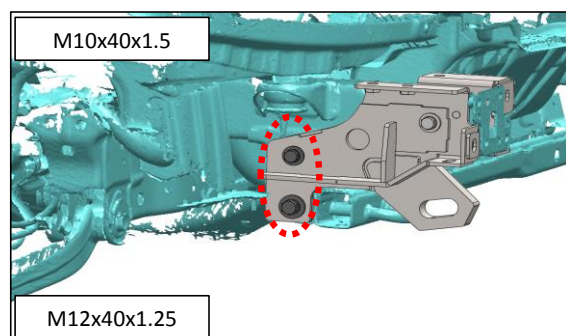


- 20 Secure Chassis Support Bracket & Recovery Point (RH&LH) with M10 bolt (M10x100x1.25), spring washer, flat washer and Flange nut as shown.

* Repeat for the opposite side



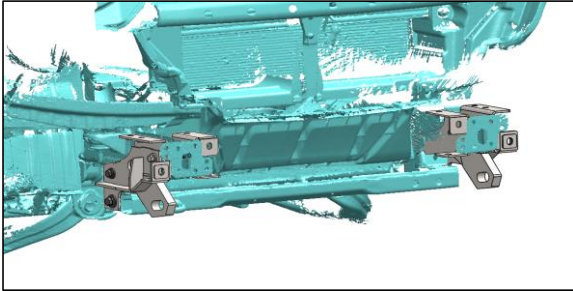
- 21 Insert Plate Nut on the hole of the chassis as shown.



- 22 Secure Chassis Support Bracket & Recovery Point (RH&LH) with M10 bolt (M10x40x1.5), M12 bolt (M12x40x1.25) spring washer, flat washer and Plate Nut as shown.

* Repeat for the opposite side

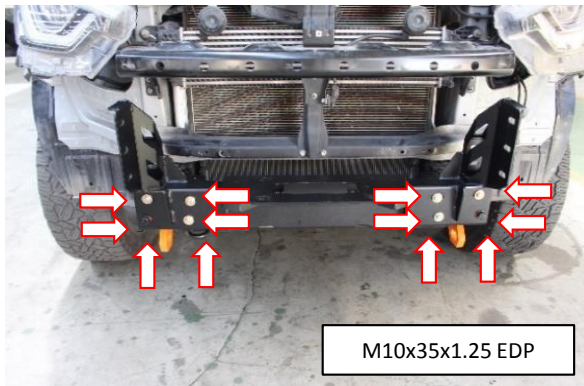
FITTING PROCEDURE



- 23 Already fit chassis support bracket inside (RH&LH) to the vehicle.



- 24 Lift the chassis mounting bracket onto the chassis of vehicle.



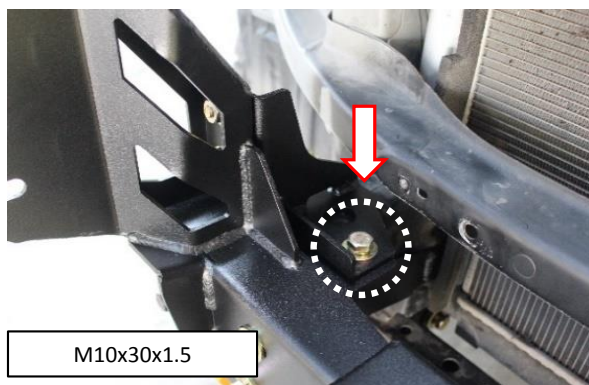
- 25 Secure with twelve M10 bolts (M10x35x1.25), spring and flat washers as shown.



- 26 Install the chassis support bracket upper (RH&LH) at location as shown.

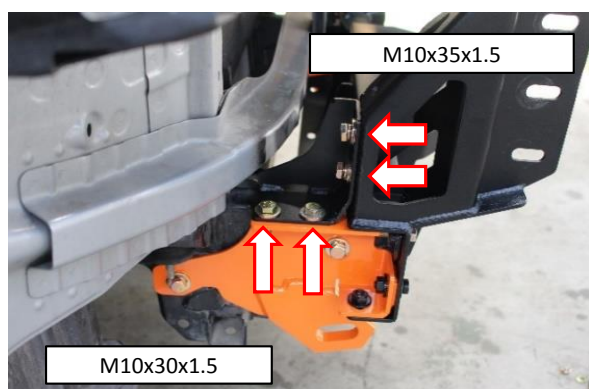
* Repeat for the opposite side

FITTING PROCEDURE



27 Secure with M10 bolt (M10x30x1.5), spring and flat washer as shown.

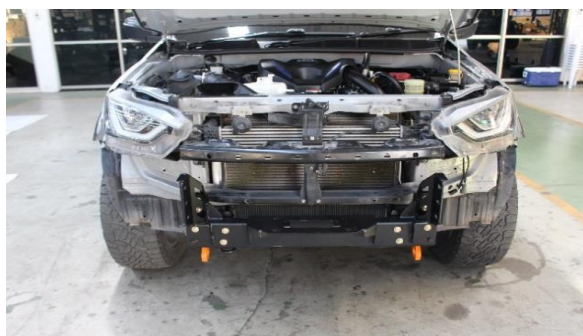
* Repeat for the opposite side



28 Secure with two M10 bolts (M10x30x1.5), spring washers and flat washers.

Secure two M10 bolts (M10x35x1.5), spring washers, flat washers and Hex nut as shown.

* Repeat for the opposite side



29 Already install set Chassis Support Bracket to the vehicle.



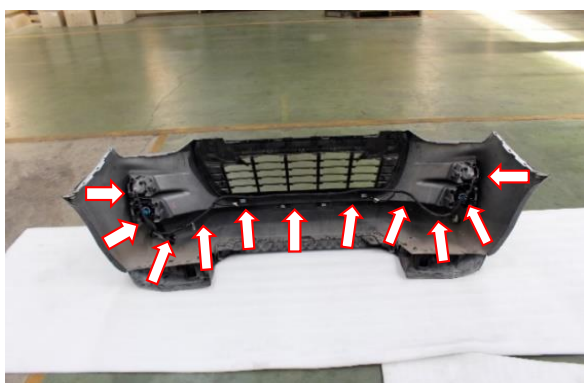
30 Location of winch on the chassis mount bracket.

FITTING PROCEDURE

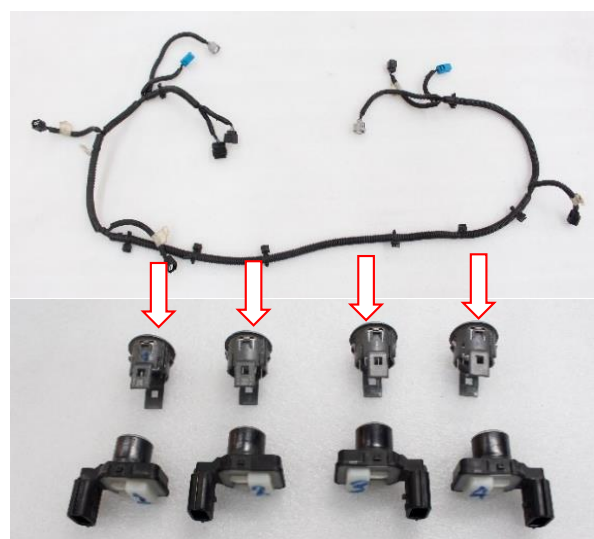


- 31** Using a LED test lamp or multi meter locate the "Parking Lights" wires. Wires are located behind the headlamp inside the engine bay.

***Repeat for the opposite side**



- 32** The location of parking sensor wires(where fitted) at the bumper bar.

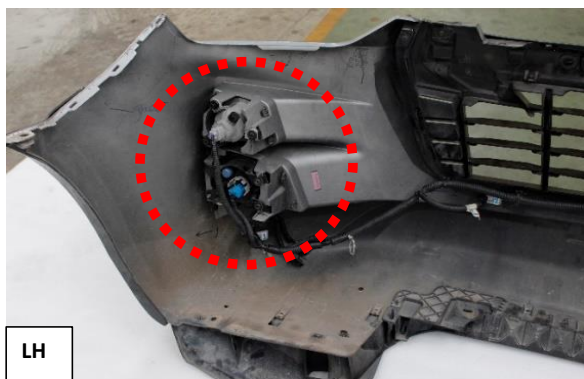


- 33** After removing parking sensor wires from the original bumper.

***Keep for re- fitment of bumper.**

***Do it carefully**

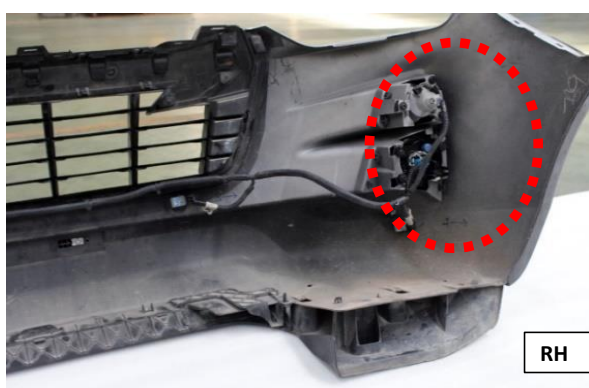
FITTING PROCEDURE



34 Remove Fog light from original bumper.

***Keep for re- fitment of bumper.**

***Do it carefully**



35 Remove Fog light from original bumper.

***Keep for re- fitment of bumper.**

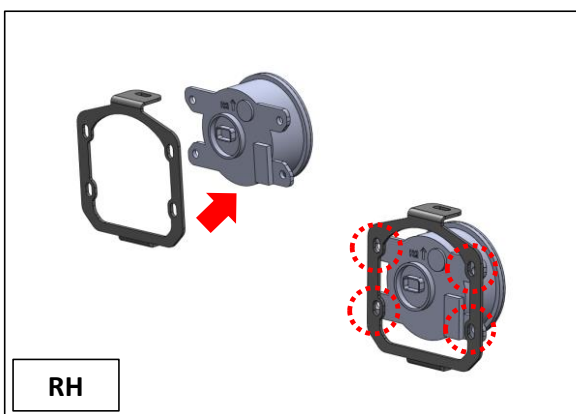
***Do it carefully**



36 Original Fog lights.

***Keep for re- fitment of bumper.**

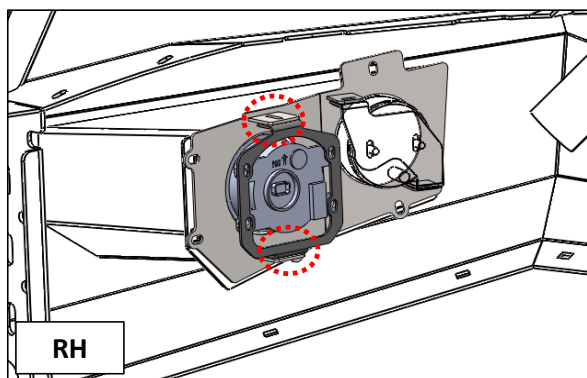
***Do it carefully**



37 Fit Fog light on the Fog light Bracket.
Using four M6 bolts (M6x1.0x15) flat washers and flange nuts as shown.

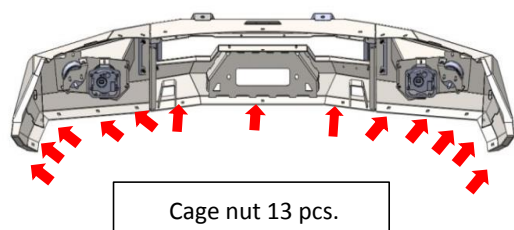
***Repeat for the opposite side**

FITTING PROCEDURE

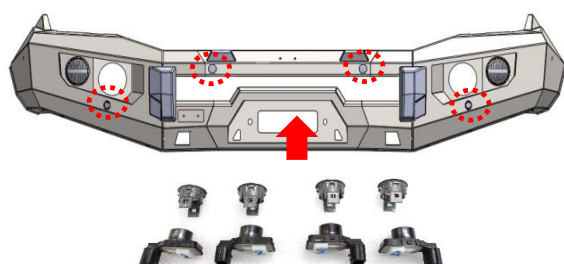


- 38** Install set Fog light on bumper bar and using two M6 (M6x1.0x20) bolts flat washers and flange nut.

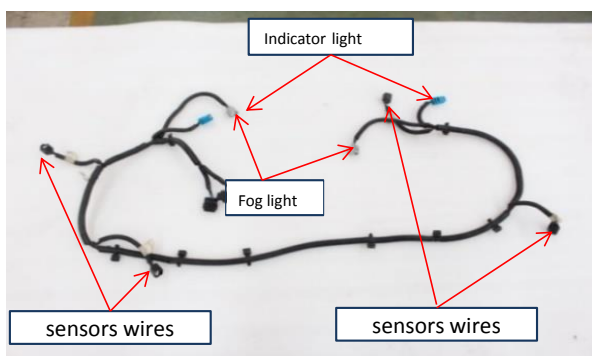
***Repeat for the opposite side**



- 39** Insert thirteen M6x1.0x3T cage nuts onto the bumper bar as shown.



- 40** Re-install the parking sensors to the bumper bar.



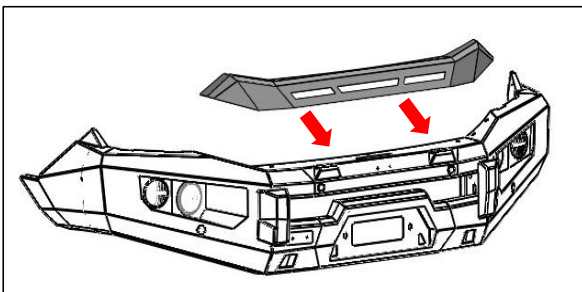
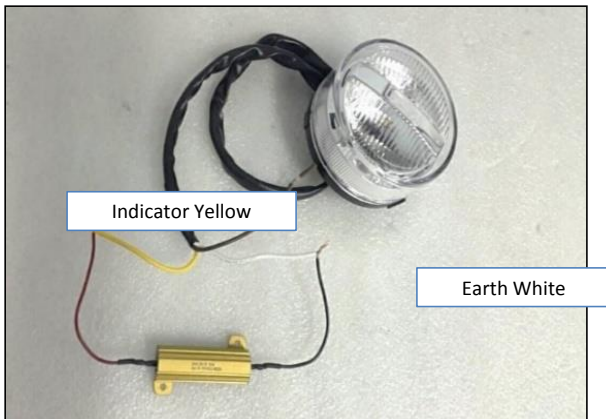
- 41** Re-install wiring harness . Solder the Fog light , Indicator& Parking light and connect the sensors.

Due to the “CAN bus” wiring system of the vehicle a “LED Load Resistor” supplied with kit must be wired in, see resistor pack ageing for wiring details. Both sides.

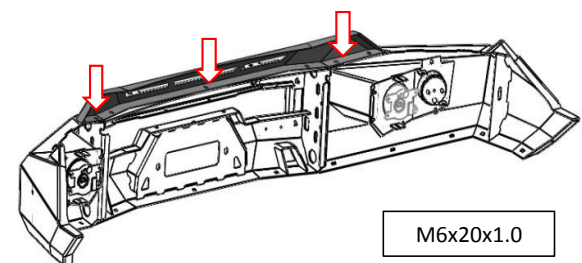
PIAK LED Harness codes

- Indicator Yellow
- Park brown
- Earth White

FITTING PROCEDURE



- 42 Lift the Infill ID20 onto the top of the bumper bar .

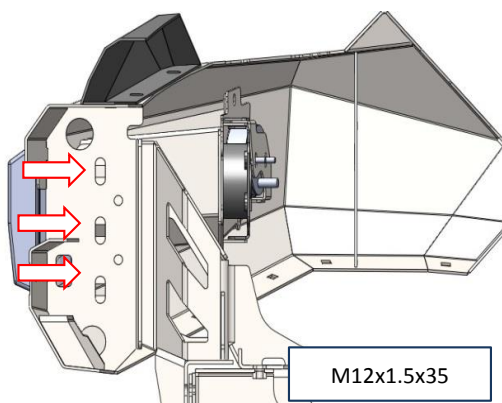


- 43 Secure with seven M6 bolt (M6x20x1.0), spring washer, flat washer and flange nut as shown.



- 44 Lift the bumper bar onto the chassis of the vehicle.

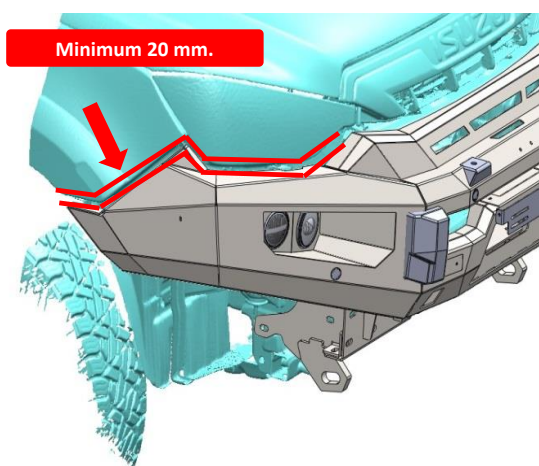
FITTING PROCEDURE



- 45 Secure bumper bar onto the chassis mounting bracket by using three M12 bolts(M12x1.5x35), spring washers, flat washers and hex nuts.

***Repeat for the opposite side.**

***Do not tighten.**

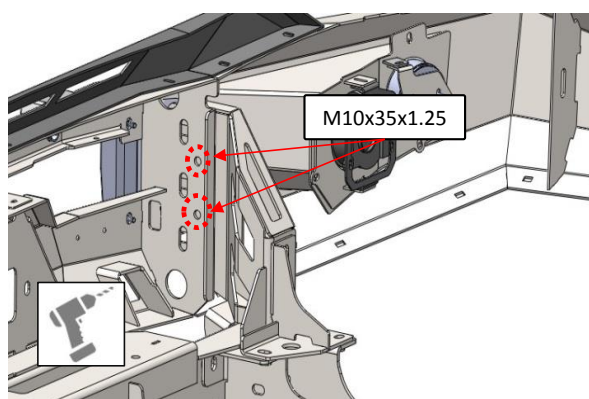


- 46 Align the bar so there is a 20mm gap between the car and wing return of the bar and the end of the wing is in line with the wheel arch.

If the bar does not sit centrally across the front of the vehicle, \loosen the chassismount and adjust accordingly.

***Tighten all bolts to the correct torque.**

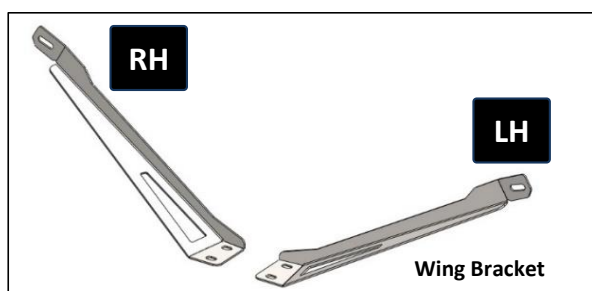
***Repeat for the opposite side.**



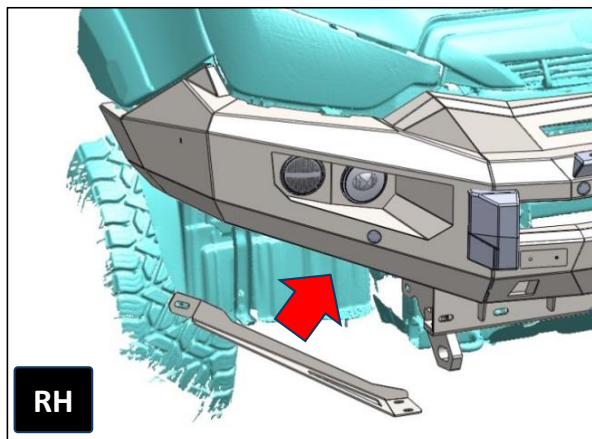
- 47 Drill two 10 mm holes through the chassis mount bracket by using holes on the bullbar as a guide and painted with rustproof paint.

Secure with two M10 bolts (M10x35x1.25) spring washers ,flate washers and flange nuts.

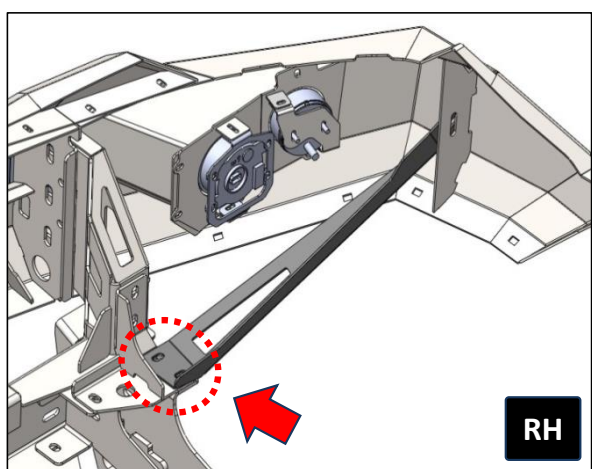
***Repeat for the opposite side.**



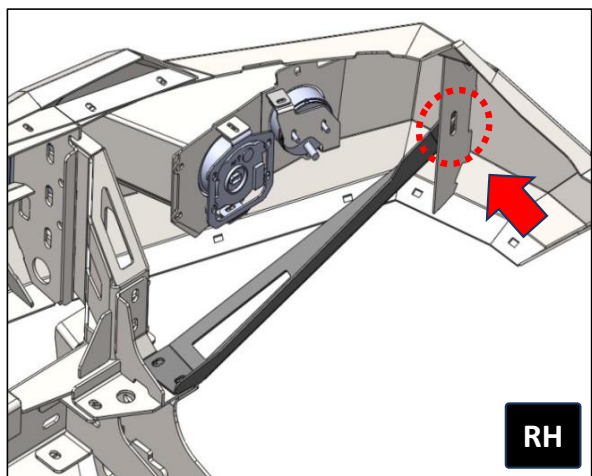
FITTING PROCEDURE



- 48 Place wing bracket (RH) to the bullbar.



- 49 Secure wing bracket to two M10 bolt that fitted the Chassis Support Bracket.



- 50 Secure wing support bracket to the end of wing by using bolt (M10x35x1.5), spring washer, flat washer and Hex Nut.

Repeat for the opposite side.

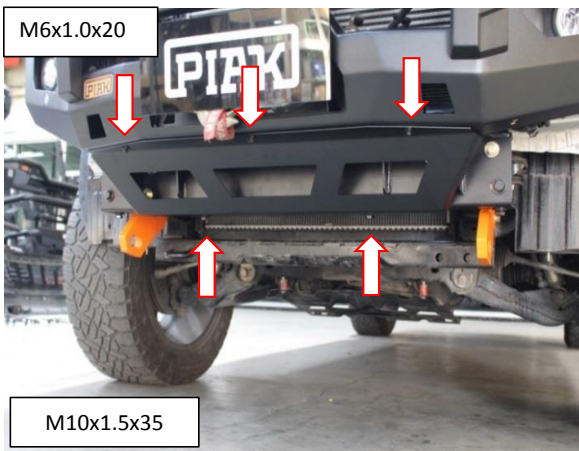


- 51 Connect cable parking sensor , Fog light and PIAK combination lamp.

FITTING PROCEDURE



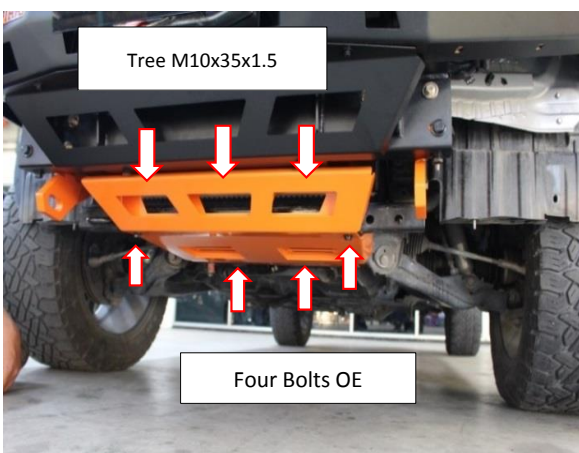
- 52 Lift the the Top Protection Plate center onto the chassis of the vehicle as shown.



- 53 Secure three M6 bolts (M6x1.0x20), Spring washers and flat washers, two M10 bolts (M10x1.5x30), Spring washers and flat washers as shown.



- 54 Lift the the bottom Protection Plate onto the chassis of the vehicle as shown.



- 55 Secure tree M10 bolts (M10x1.5x35), Spring washers, flat washers and hex nuts as shown.

FITTING PROCEDURE



- 56** Secure five M6 bolts (M6x1.0 x20), Spring washers and flat washers as shown.

Secure M8 bolts (M8x1.25 x20), Spring washers and flat washers as shown.

***Repeat for the opposite side.**



- 57** Mark the location on the fenders as shown.

***Repeat for the opposite side.**

FITTING PROCEDURE



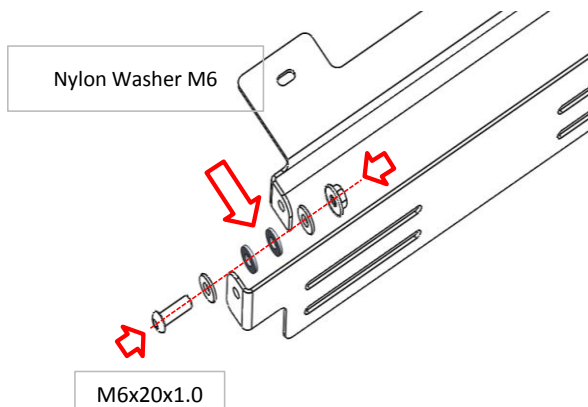
- 58 Re-install the front grill to the vehicle by using original bolts.



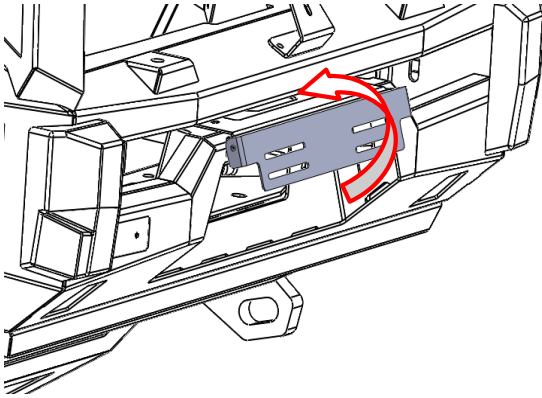
- 59 Re-install the clips to the OEM Plastic radiator cover.



- 60 Assemble License plate bracket by using two M6 button head, flat washer, Nylon Washer M6 and nyloc nut as shown. Do not fully tighten.



FITTING PROCEDURE



- 61 Assemble License plate bracket by using two M6 button head, flat washer, Nylon Washer M6 and nyloc nut as shown. Do not fully tighten.

