

PIAK

ELITE

NON LOOP

WINCH BAR

FITTING INSTRUCTIONS



ISUZU MU-X 2013-2016

PK106SIM13E_RMB_UPMB ,PK106SIM13E_RMB_UPO
PK106SIM13E_RO_UPMB ,PK106SIM13E_RO_UPO

Fitting Time : approx. 3 hours



BULL BAR SAFETY NOTICE:

INSTALLATION SHOULD ONLY BE DONE BY APPROPRIATELY QUALIFIED OR EXPERIENCED PERSONS IN ACCORDANCE WITH THESE INSTRUCTIONS.

IT IS THE RESPONSIBILITY OF THE INSTALLER TO ENSURE THAT THE PRODUCT IS CORRECTLY FITTED.

WARNING:

Do not attach Vehicle Frontal Protection System (**VFPS**) to the vehicle using anchorages not intended for this purpose. (e.g. engine mounting bolts)

Do not use this product for any vehicle make or model, other than those specified by the VFPS manufacturer.

Do not remove the plaque or label from the VFPS.

Do not modify the structure of the VFPS in any way.

The VFPS has been produced to provide continued functionality of parking sensors and other "driver assist" features as closely as possible to Original Equipment. However, as all possible road conditions and combination of other accessories fitted to the vehicle which may affect functionality characteristics cannot be anticipated, ***the driver remains responsible at all times for properly controlling the vehicle, monitoring all "driver assist" features and intervening where required to ensure the vehicle is safely operated.***

IMPORTANT INFORMATION:

Before installing the VFPS:

Check that all components, as listed in the assembly table, are available.

Thoroughly read all instructions.

This product or its fasteners must not be modified in any way.

These instructions are accurate as at the revision date and do not take into account any changes made by the vehicle manufacturer to vehicle design after the revision date or other accessories that are or have been fitted to the vehicle. Piak cannot be held responsible for such changes and appropriate enquiries should be made before installation.

Before installing, inspecting and/or maintaining the VFPS, the work space should be safe and clear of fuel, debris, electrical or other components.

During installation:

It is the responsibility of the installer to confirm correct operation/clearance of all components.

All holes drilled shall have all burrs and swarf removed then coated with a suitable rust preventative paint.

Ensure that all hardware is fastened to torque list as detailed in these instructions.

MAINTENANCE AND CARE:

To ensure continued safety and correct operation of the product, the VFPS must be routinely inspected and regularly serviced (including bolt torque checked for correct tension) by an appropriately qualified or experienced person.

The high tensile fasteners supplied with this product were used to achieve the specified rating. If replacement of the fasteners is required, fasteners of the same rating and quality must be used.

If this VFPS is fitted with a hinged number plate bracket, extra care must be taken when returning back to public roads following the use of the winch or conducting a deep water crossing.

The driver must ensure that the number plate bracket is returned back to the down position allowing full visibility of the number plate when returning to public roads.

EQUIPMENT:

These safety products should, at a minimum, be used when fitting or working on the product.



Protective Glasses



Hearing Protection

Installation in accordance with these instructions and adherence to warnings will ensure compliance with relevant regulatory and safety standards as at the revision date.

Failure to adhere to these instructions may affect the roadworthiness of the vehicle or cause personal injury, death or damage to property.

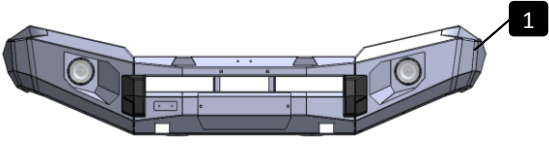
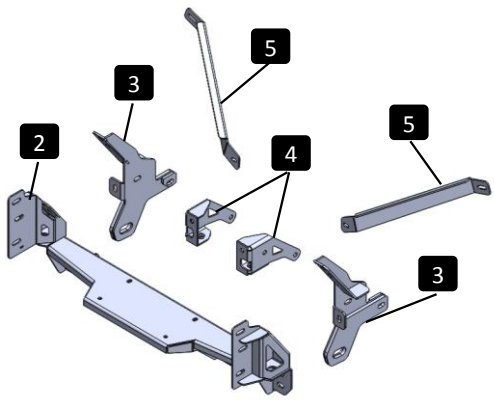
BY USING THIS PRODUCT YOU ACKNOWLEDGE AND AGREE THAT TO THE EXTENT PERMITTED BY LAW PIAK WILL NOT ACCEPT LEGAL OR OTHER LIABILITY FOR ANY LOSS, INJURY OR DAMAGE CAUSED BY INCORRECT OR INAPPROPRIATE INSTALLATION OR USE OF THE PRODUCT.

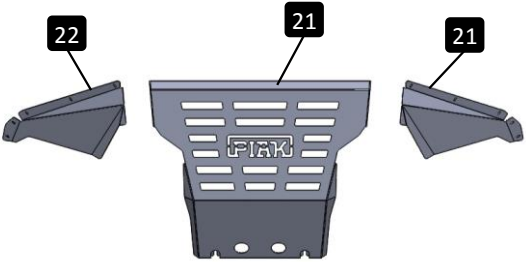
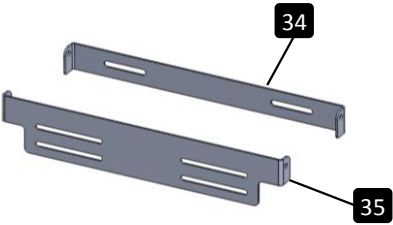
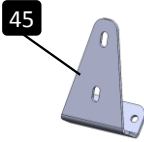
Tools required

1. Metric socket and spanners
2. Phillips and flat head screw driver
3. Torque wrench
4. Marking pen
5. 2" Masking tape
6. Drill and metric drill bits
7. Test lamp or multi-meter

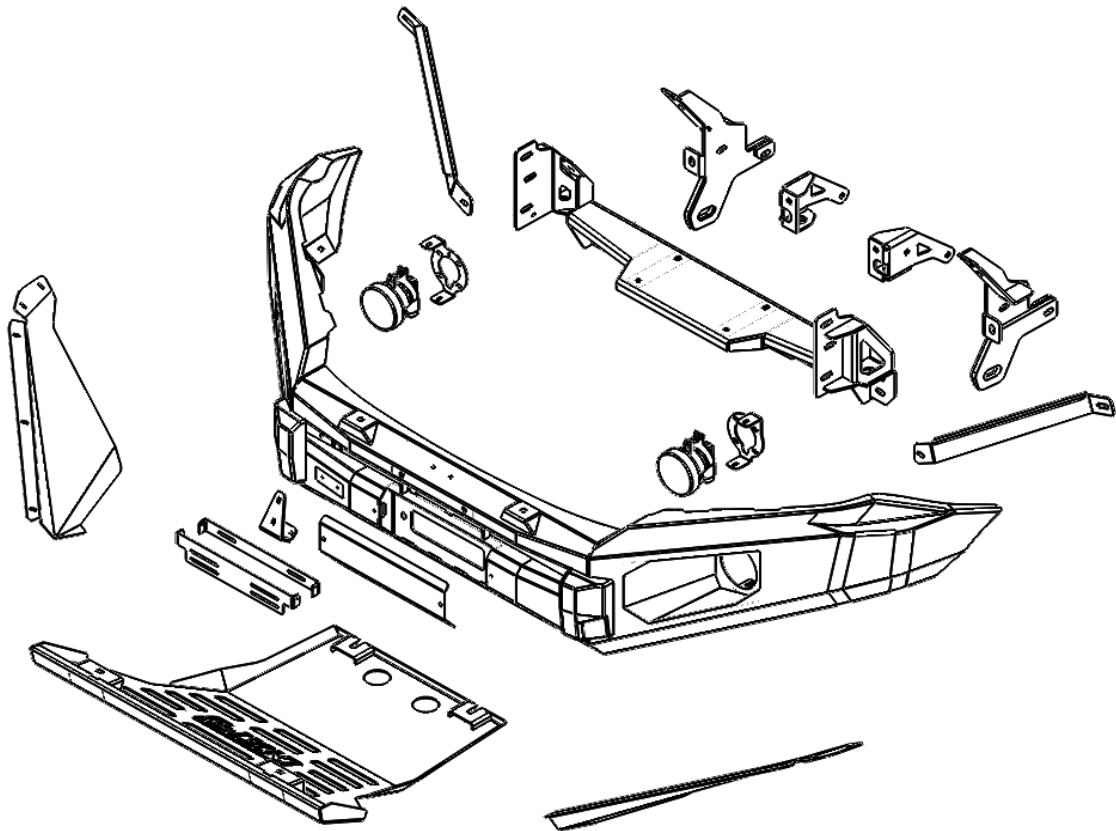
Parts List

⚠ Important : Check contents of fitting kit before commencing fitment and report any discrepancies.

Steel Bull bar			
Item	Component Name	Q'ty	Remarks
1	Winch Bull bar		
Chassis Mounts to Vehicle			
Item	Component Name	Q'ty	Remarks
2	Chassis Mount Bracket	1	
3	Chassis support bracket & Recovery(LH/RH)	2	
4	Chassis support bracket inside(LH/RH)	2	
5	Winch Brace(LH/RH)	2	
6	Hex Bolt M12x35x1.50	6	
7	Spring washer M12	6	
8	Flat washer M12	12	
9	Hex Nut M12x1.50	6	
10	Hex Bolt M10x75x1.50	2	
11	Hex Bolt M10x90x1.50	2	
12	Hex Bolt M10x35x1.50	12	
13	Hex Bolt M10x35x1.25	4	
14	Spring washer M10	20	
15	Flat washer M10	32	
16	Hex Nut M10x1.5	12	
17	Hex Bolt M8x30x1.25	4	
18	Spring washer M8	4	
19	Flat washer M8	8	
20	Flange Nut M8x1.25	4	

Protection Plates to Bar			
Item	Component Name	Q'ty	Remarks
21	Protection Plate Center	1	
22	Protection Plate wing (LH/RH)	2	
23	Hex Bolt M12x35x1.25	2	
24	Spring Washer M12	2	
25	Flat Washer M12	2	
26	Hex Bolt M8x30x1.25	2	
27	Spring Washer M8	2	
28	Flat Washer M8	2	
29	Hex Bolt M6x20x1.0	10	
30	Spring Washer M6	10	
31	Flat Washer M6	10	
32	Cage Nut M8x1.25x2T	2	
33	Cage Nut M6x1.0x3T	10	
License Plate Bracket			
Item	Component Name	Q'ty	Remarks
34	License Plate Bracket (Inner)	1	
35	License Plate Bracket (Outer)	1	
36	Hex Bolt M6x20x1.0	4	
37	Spring Washer M6	4	
38	Flat Washer M6	6	
39	Button Head Bolt M6x20x1.0	2	
40	Nyloc Nut M6x1.0	2	
41	Nylon Washer M6	4	
42	Flat Washer M6 OD14	4	
43	Flange Nut M6x1.0	2	
44	Cage Nut M6x1.0x3T	2	
Winch Control Plate			
Item	Component Name	Q'ty	Remarks
45	Winch Control Plate	1	
46	Hex Bolt M6x20x1.0	2	
47	Spring Washer M6	2	
48	Flat Washer M6	4	
49	Flange Nut M6x1.0	2	

Components Overview



Torque Setting of Fastener

Mounting bolts must be tightened to torque's specified following ;

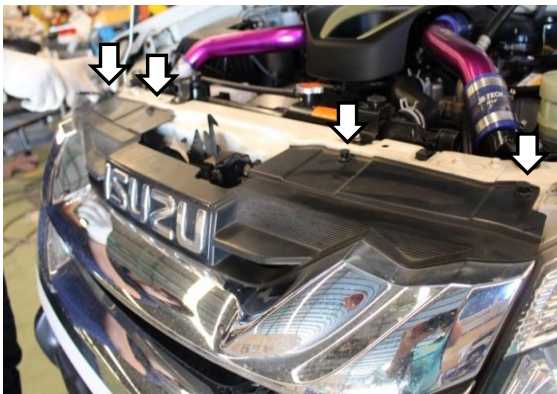
Bolt Diameter (mm.)	Torque (Nm)	Torque (ft.lb)
M6	9	7
M8	22	16
M10	44	32
M12	77	57

Fitting Procedure



1 Locate the vehicle in a suitable position.

2 Rest the bullbar on a surface that will not scratch the bar.



3 Remove four clips that retain the grille at the top. Keep for re-fitment of grille.

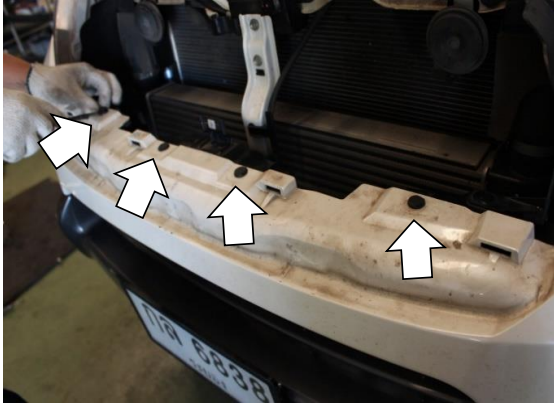


4 Remove one screw that retain the grille at the front. Keep for re-fitment of grille.



5 Remove the front grille and keep for re-fitment.

Fitting Procedure



- 6** Remove and discard four clips that retain the bumper at the top.



- 7** Remove and discard two original nuts that retain the bumper at the bottom.



- 8** Remove and discard the screw retaining the bumper bar in the wheel arch.

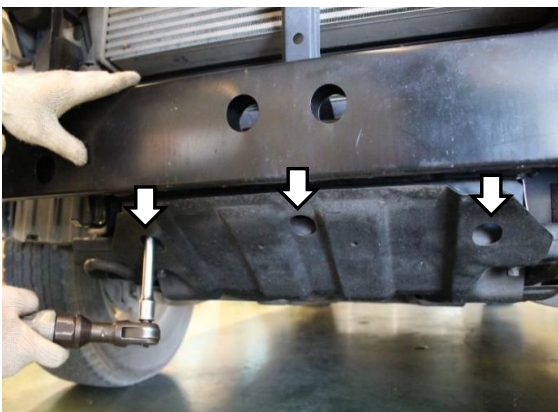
- 9** Repeat for the opposite side.

Fitting Procedure



- 10** Carefully remove the bumper from the vehicle.

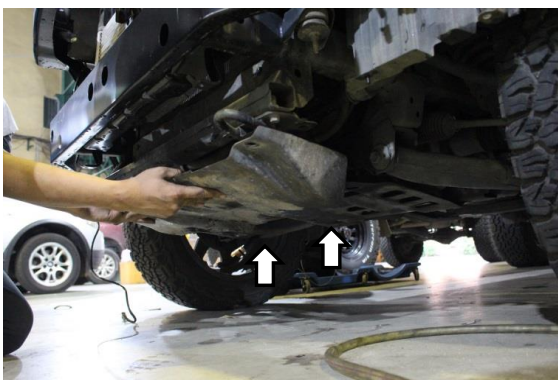
If unsure about bumper removal refer to the workshop manual.



- 11** Remove and discard three original bolts from the lower plastic stone tray .

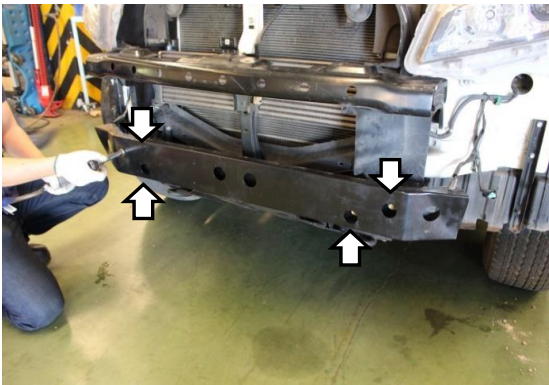


- 12** Remove any existing Protection Plate1 original installed on vehicle .



- 13** Remove any existing Protection Plate2 original installed on vehicle .

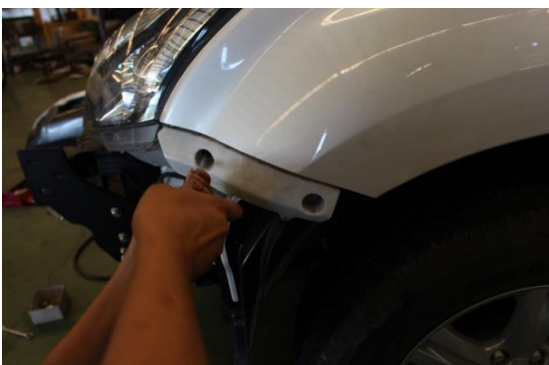
Fitting Procedure



- 14** Remove and retain four original bolts from the front intrusion beam for re-fitment.



- 15** Remove and discard the front intrusion beam from the vehicle.



- 16** Remove and discard the bumper clips from the lower edge of the headlights.

Fitting Procedure



- 17** Remove and discard the outer bumper clips from the front guards.

Repeat in step 16-17 for the opposite side.



- 18** Remove and discard the upper air Remove and discard the upper air guides from both sides of the vehicle .



- 19** Remove and discard the bumper support brackets from either side of the vehicle.



- 20** Lift the chassis mounting bracket onto the chassis of vehicle.

Fitting Procedure



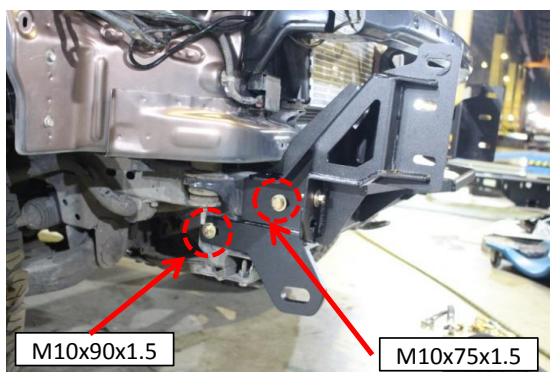
- 21** Secure with four M10 bolts (M10x35x1.25) spring washers and flat washers as shown.



- 22** Place chassis support bracket inside to the chassis mounting bracket as shown.

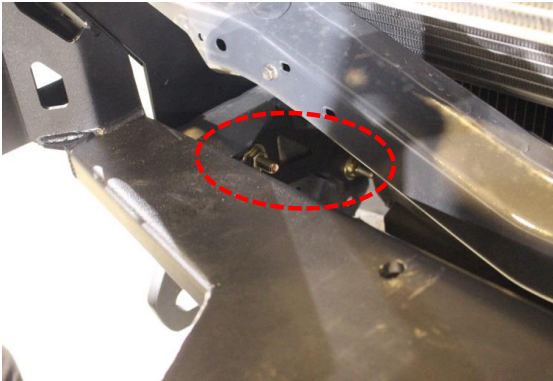


- 23** Place Chassis support bracket & Recovery to the chassis mounting bracket as shown.



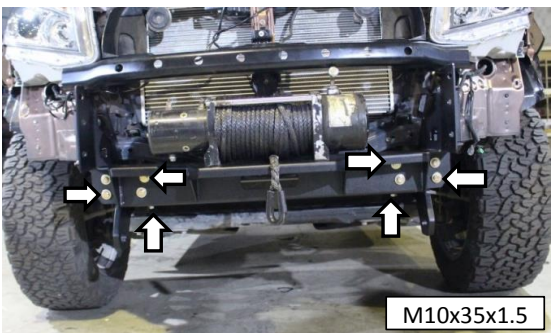
- 24** Secure with two M10 bolts (M10x75x1.5), (M10x90x1.50) spring washers, flat washers and hex nuts as shown.

Fitting Procedure

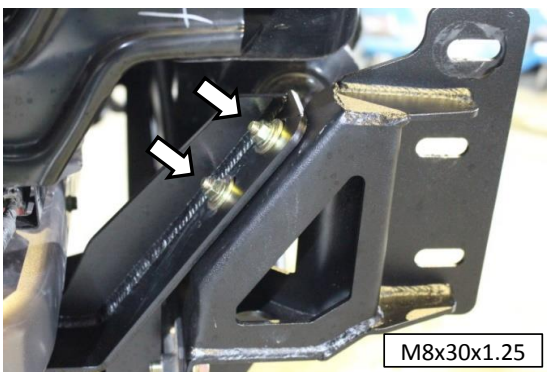


- 25** Trim the inner guard as shown.

Repeat in step 22-25 for the opposite side.



- 26** Secure the Chassis support bracket to mounting bracket by using six M10 bolts (M10x35x1.5), spring and flat washers and hex nuts as shown



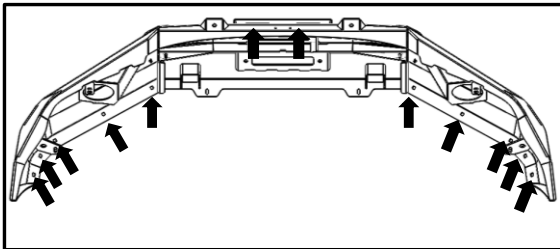
- 27** Secure the chassis mount bracket to the chassis support assembly with two M8 30x 1.25 hex bolts, M8 spring, flat washers and Flange Nut

Repeat for the opposite side.

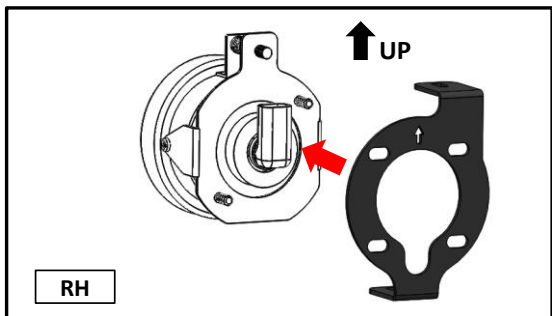
Fitting Procedure



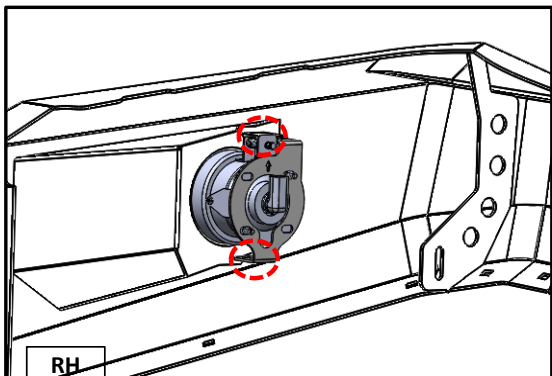
28 location of winch on the chassis mount bracket.



29 Insert eight M6x1.0x3T cage nuts onto the bullbar as indicators.



30 bracket fog light and fog light Befor installation.



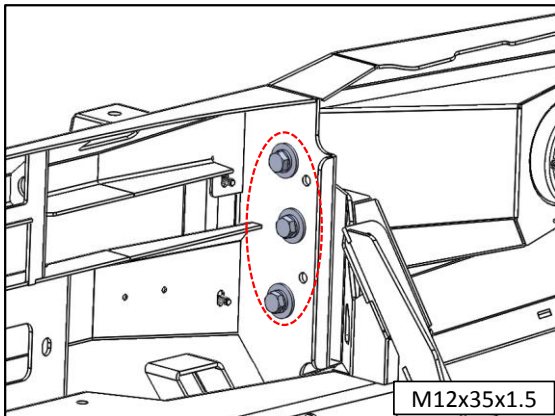
31 install bracket fog light to the fog light with two flange nut M6x1.0 ,flat washer M6, by the arrowhead and the plug pointing upwards at the top.

Repeat for the opposite side.

Fitting Procedure



- 32** Lift the bullbar onto the chassis of the vehicle.



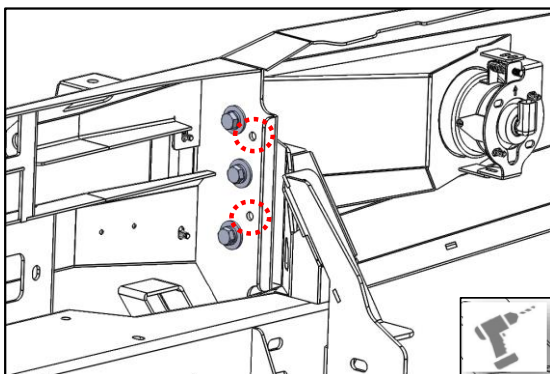
- 33** Lift the bullbar onto the chassis of the vehicle. Secure bull bar onto the chassis mounting bracket by using three M12 bolts (M12x35x1.5), spring and flatwashers and hex nuts as shown at the circles.

Repeat for the opposite side.



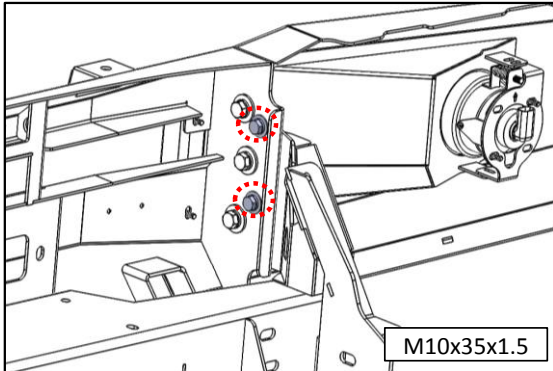
- 34** Align the bar so there is a 20mm gap between the car and wing return of the bar and the end of the wing is in line with the wheel arch.

If the bar does not sit centrally across the front of the vehicle, loosen the chassis mount and adjust accordingly. Tighten all bolts to the correct torque.



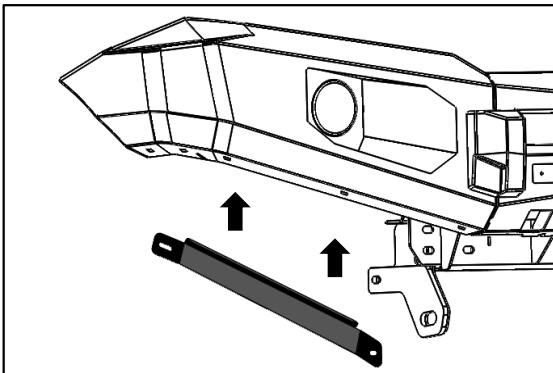
- 35** Drill two 10mm. holes through the chassis mount bracket by using holes on the bullbar as a guide.

Fitting Procedure

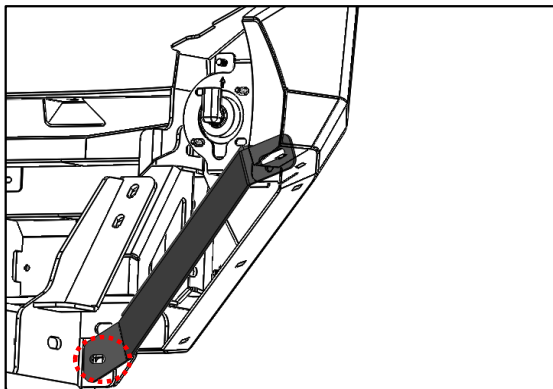


- 36** Secure with two M10 bolts (M10x35x1.50) and nuts as shown.

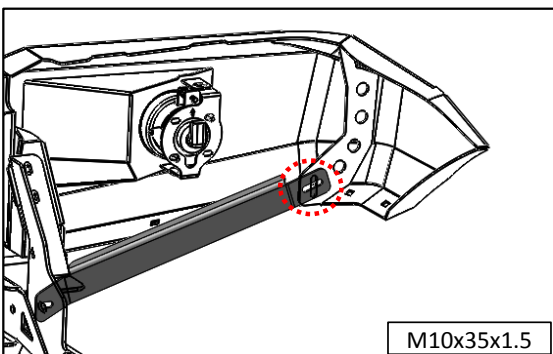
Repeat for the opposite side.



- 37** Place RH wing support bracket to the bullbar.

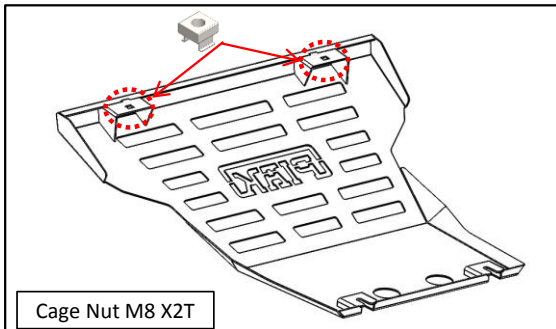


- 38** Secure wing support bracket to M10 bolt that fitted the outer mounting bracket by using flat washers and hex nut.

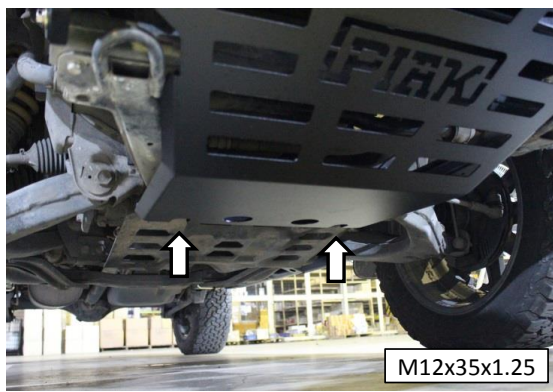


- 39** Secure wing support bracket to the end of wing using bolts (M10x35x1.5), spring and flat washers and hex nuts as shown

Fitting Procedure



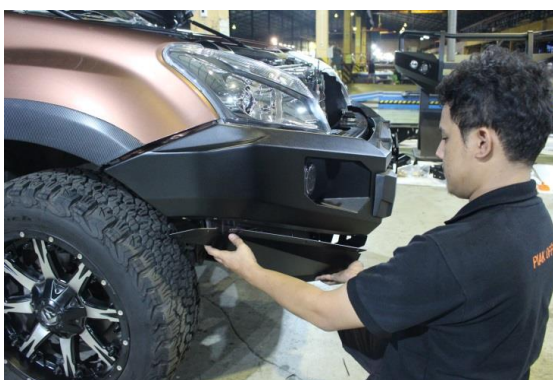
- 40** Insert tow M8x1.25x2T cage nuts onto the Under protection plate Center as indicators.



- 41** Fit the the Under protection plate Center onto the chassis of vehicle.Using tow Hex Bolt M12x35x1.25, spring and flat washers.



- 42** Fit the the Under protection plate Center onto the bullbar.Using tow M8 x 1.25 x 30mm hex bolts, spring and flat washers.



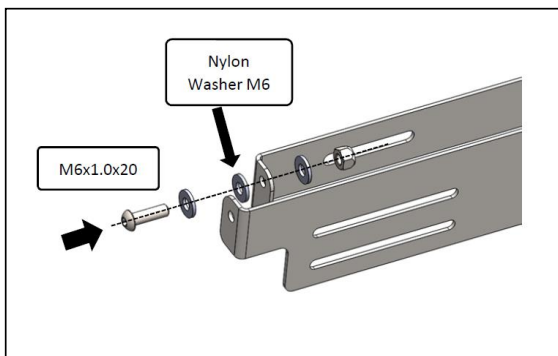
- 43** Fit the wing protection plate onto the bullbar.Using five M6 x 1.0 x 20mm hex bolts, spring and flat washers.

Fitting Procedure

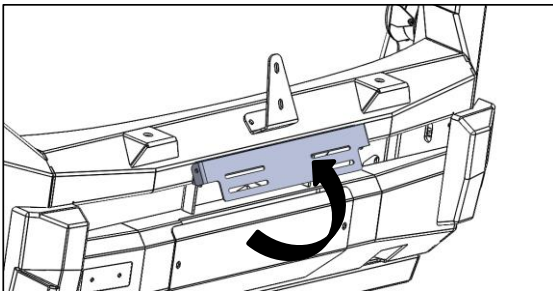


44

Re-install the front grill removed earlier to the vehicle by using four clips and one screw for re-fitting.



Assemble License plate bracket by using two M6 button head, flat washer, Nylon Washer M6 and nyloc nut as shown. Do not fully tighten.



Fitting Procedure

