



SIDE STEP KITS

FITTING INSTRUCTIONS



FORD EVEREST 2015-2018

PK404BCPFE15/FE18
PK404SCPFE15/FE18

Fitting Time : approx. 1 hours

Side Step Kits Ford Everest 2015-2018
RD-SP-002/FT-018
Rev.01 (28-DEC-2022)

SIDE STEP SAFETY NOTICE:

INSTALLATION SHOULD ONLY BE DONE BY APPROPRIATELY QUALIFIED OR EXPERIENCED PERSONS IN ACCORDANCE WITH THESE INSTRUCTIONS.

IT IS THE RESPONSIBILITY OF THE INSTALLER TO ENSURE THAT THE PRODUCT IS CORRECTLY FITTED.

WARNING:

Do not attach the side step to the vehicle using fasteners other than provided.

Do not use this product for any vehicle make or model, other than those specified.

Do not remove the plaque or label from the side step

Do not modify the structure of the side step in any way.

IMPORTANT INFORMATION:

Before installing the PIAK Products:

- Check that all components, as listed in the assembly table, are available.
- Thoroughly read all instructions.

This product or its fasteners must not be modified in any way.

These instructions are accurate as at the revision date and do not take into account any changes made by the vehicle manufacturer to vehicle design after the revision date or other accessories that are or have been fitted to the vehicle. PIAK cannot be held responsible for such changes and appropriate enquiries should be made before installation.

Before installing, inspecting and/or maintaining the PIAK Products, the work space should be safe and clear of fuel, debris, electrical or other components.

During installation:

- It is the responsibility of the installer to confirm correct operation/clearance of all components.
- All holes drilled shall have all burrs and swarf removed then coated with a suitable rust preventative paint.
- Ensure that all hardware is fastened to torque list as detailed in these instructions.

MAINTENANCE AND CARE:

To ensure continued safety and correct operation of the PIAK Products. It must be routinely inspected and regularly serviced (including bolt torque checked for correct tension) by an appropriately qualified or experienced person.

The high tensile fasteners supplied with this product were used to achieve the specified rating. If replacement of the fasteners is required, fasteners of the same rating and quality must be used.

EQUIPMENT:

These safety products should, at a minimum, be used when fitting or working on the product.



Protective Glasses



Hearing Protection

Installation in accordance with these instructions and adherence to warnings will ensure compliance with relevant regulatory and safety standards as at the revision date.

BY USING THIS PRODUCT YOU ACKNOWLEDGE AND AGREE THAT TO THE EXTENT PERMITTED BY LAW PIAK WILL NOT ACCEPT LEGAL OR OTHER LIABILITY FOR ANY LOSS, INJURY OR DAMAGE CAUSED BY INCORRECT OR INAPPROPRIATE INSTALLATION OR USE OF THE PRODUCT.

TOOLS REQUIRED

1. Torque , Socket wrench
2. Screw driver
3. Open spanner

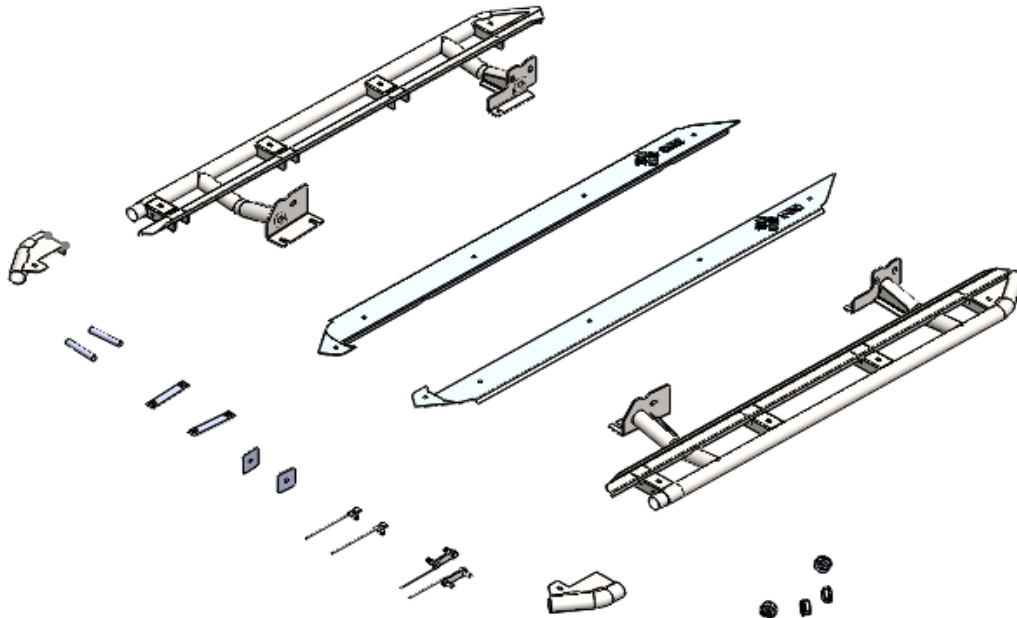
PARTS LIST



Important : Check contents of fitting kit before commencing fitment and report any discrepancies.

Steel Side Step			
Item	Component Name	Q'ty	Remarks
1	Side Step (LH)	1	
2	Side Step (RH)	1	
Connector Side Step			
Item	Component Name	Q'ty	Remarks
3	Plate Bolt M12x1.5x35	2	
4	Plate Bolt M10x1.25x30	2	
5	Weld Nut Plate	2	
6	Tube	2	
7	Spacer	2	
8	Hex Bolt M12x160x1.75	2	
9	Hex Nut M12x1.75	2	
10	Flat Washer M12OD33	8	
11	Spring Washer M12	6	
12	Hex Nut M12x1.5	4	
13	Hex Bolt M10x35x1.5	4	
14	Flat Washer M10 OD27	6	
15	spring washer M10	4	
16	Flange Nut M10x1.25	2	
17	Piak Logo Sticker Mylar 23x61 mm.	2	

Component overview

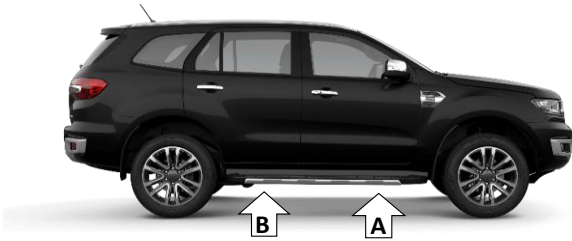


TORQUE SETTING OF FASTENER

Mounting bolts must be tightened to torque's specified following ;

Bolt Diameter (mm.)	Torque (Nm)	Torque (ft.lb)
M6	9	7
M8	22	16
M10	44	32
M12	77	57

FITTING PROCEDURE



- 1 Locate the vehicle in a suitable area.



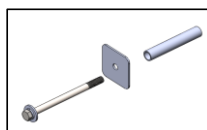
- 2 Insert nut plate inside chassis rail in front position (A).



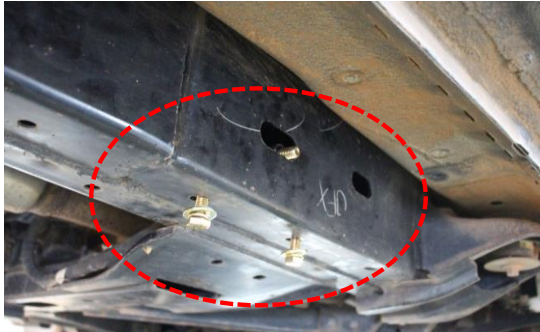
- 3 Fit two M10 bolts (M10x35x1.5), spring washers and flat washers at the bottom on the nut plate .



- 4 Insert bolt with crush tube and washer plate from the inside of the chassis rail.



FITTING PROCEDURE



- 5** Locate the vehicle in chassis rail in front position (A).

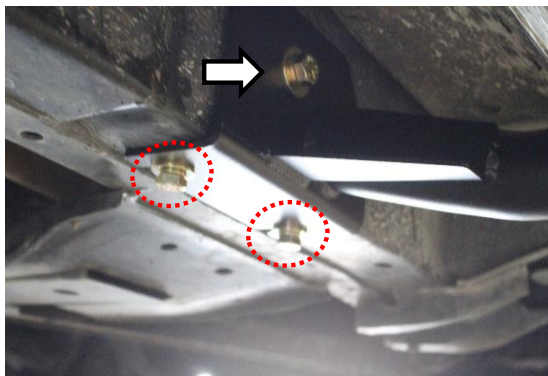
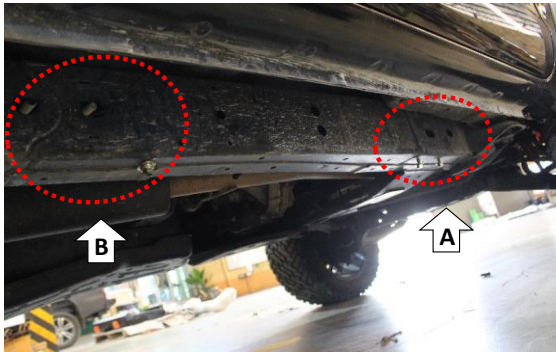


- 6** Place Plate Bolt (M10x1.25x30) on the rear position of chassis rail.



- 7** Place Plate Bolt (M12x1.5x35) on the rear position of chassis rail.

FITTING PROCEDURE



8 Lift the side step onto the chassis of vehicle.

9 Lift the side step onto the chassis of vehicle.

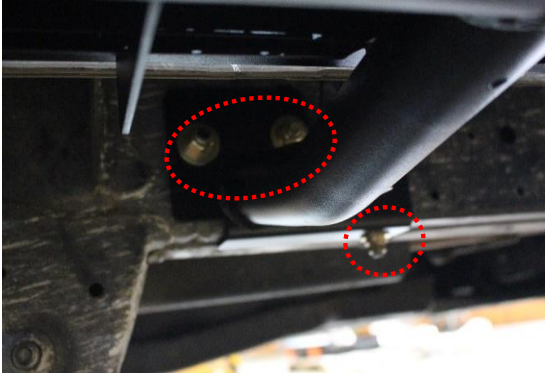
Align the step so that it is parallel with the vehicle's sill.

Fit the steel side step on the chassis rail.

10 Secure with tow M10 bolt (M10x35x1.5), spring washer, flat washer and hex nuts as shown at the circle.

Secure with one hex nuts M12x1.75 spring washer, flat washer as shown .

FITTING PROCEDURE



11 Secure with two hex nuts M10x1.5 spring washer, flat washer as shown .

Secure with one hex nuts M10x1.25 spring washer, flat washer as shown .

