



# ELITE 3-LOOP WINCH BAR

## FITTING INSTRUCTIONS



## MITSUBISHI PAJERO SPORT 2020

PK105FG1MPS20E\_RMB\_UPMB ,PK105FG1MPS20E\_RMB\_UP0  
PK105FG1MPS20E\_RMB\_UPUMBLO ,PK105FG1MPS20E\_RO\_UPMB  
PK105FG1MPS20E\_RO\_UP0 ,PK105FG1MPS20E\_RO\_UPUMBLO

**Fitting Time : Approx. 4-4.5 hours**



## UNDER PROTECTION PLATE CENTER SAFETY NOTICE:

INSTALLATION SHOULD ONLY BE DONE BY APPROPRIATELY QUALIFIED OR EXPERIENCED PERSONS  
IN ACCORDANCE WITH THESE INSTRUCTIONS.

IT IS THE RESPONSIBILITY OF THE INSTALLER TO ENSURE THAT THE PRODUCT IS CORRECTLY FITTED.

## WARNING:

- Do not attach Vehicle Frontal Protection System (VFPS) to the vehicle using anchorages not intended for this purpose. (e.g. engine mounting bolts)
- Do not use this product for any vehicle make or model, other than those specified by the VFPS manufacturer.
- Do not remove the plaque or label from the VFPS.
- Do not modify the structure of the VFPS in any way.
- The VFPS has been produced to provide continued functionality of parking sensors and other "driver assist" features as closely as possible to Original Equipment. However, as all possible road conditions and combination of other accessories fitted to the vehicle which may affect functionality characteristics cannot be anticipated, ***the driver remains responsible at all times for properly controlling the vehicle, monitoring all "driver assist" features and intervening where required to ensure the vehicle is safely operated.***

## IMPORTANT INFORMATION:

- Before installing the VFPS:
  - Check that all components, as listed in the assembly table, are available.
  - Thoroughly read all instructions.
- This product or its fasteners must not be modified in any way.
- These instructions are accurate as at the revision date and do not take into account any changes made by the vehicle manufacturer to vehicle design after the revision date or other accessories that are or have been fitted to the vehicle. Piak cannot be held responsible for such changes and appropriate enquiries should be made before installation.
- Before installing, inspecting and/or maintaining the VFPS, the work space should be safe and clear of fuel, debris, electrical or other components.
- During installation:
  - It is the responsibility of the installer to confirm correct operation/clearance of all components.
  - All holes drilled shall have all burrs and swarf removed then coated with a suitable rust preventative paint.
  - Ensure that all hardware is fastened to torque list as detailed in these instructions.

## **MAINTENANCE AND CARE:**

To ensure continued safety and correct operation of the product, the VFPS must be routinely inspected and regularly serviced (including bolt torque checked for correct tension) by an appropriately qualified or experienced person.

The high tensile fasteners supplied with this product were used to achieve the specified rating. If replacement of the fasteners is required, fasteners of the same rating and quality must be used.

If this VFPS is fitted with a hinged number plate bracket, extra care must be taken when returning back to public roads following the use of the winch or conducting a deep water crossing.

The driver must ensure that the number plate bracket is returned back to the down position allowing full visibility of the number plate when returning to public roads.

## **EQUIPMENT:**

These safety products should, at a minimum, be used when fitting or working on the product.



Protective Glasses



Hearing Protection

**Installation in accordance with these instructions and adherence to warnings will ensure compliance with relevant regulatory and safety standards as at the revision date.**

**Failure to adhere to these instructions may affect the roadworthiness of the vehicle or cause personal injury, death or damage to property.**

**BY USING THIS PRODUCT YOU ACKNOWLEDGE AND AGREE THAT TO THE EXTENT PERMITTED BY LAW PIAK WILL NOT ACCEPT LEGAL OR OTHER LIABILITY FOR ANY LOSS, INJURY OR DAMAGE CAUSED BY INCORRECT OR INAPPROPRIATE INSTALLATION OR USE OF THE PRODUCT.**

## TOOLS REQUIRED

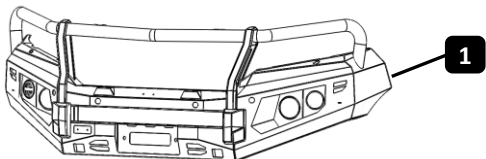
1. Metric socket and spanners
2. Phillips and flat head screw driver
3. Torque wrench
4. Marking pen
5. Cutter
6. 2" Masking tape
7. hole saw 20mm ,30mm
8. Test lamp or multi-meter
9. Drill and metric drill bits

## PARTS LIST

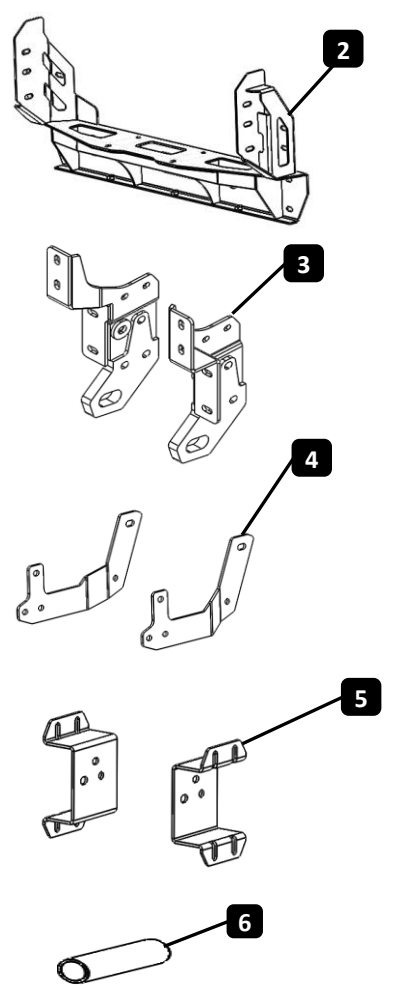


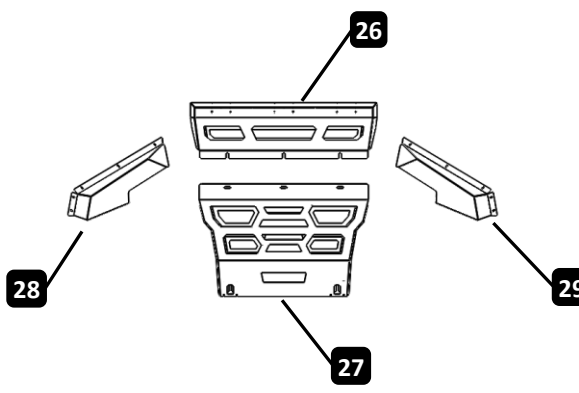
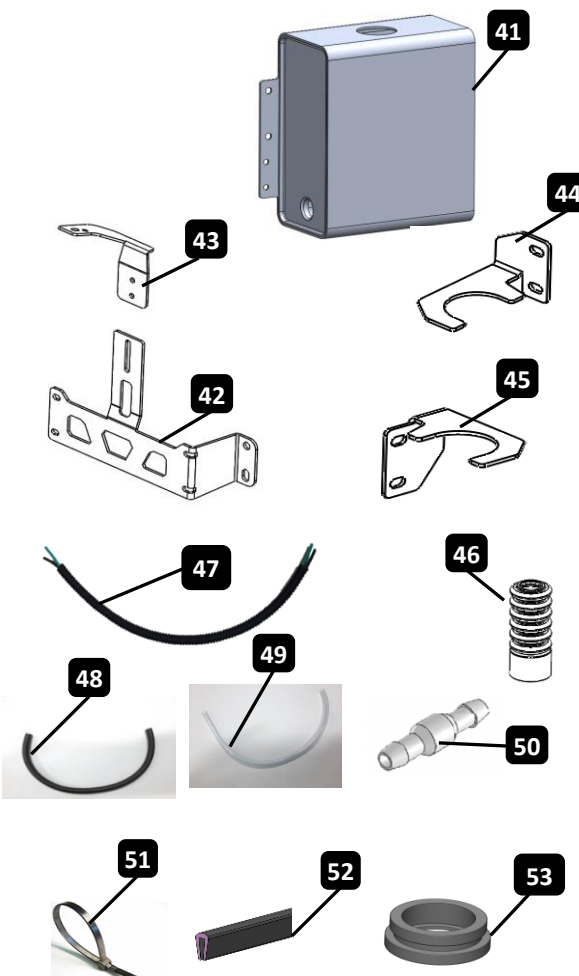
**Important :** Check contents of fitting kit before commencing fitment and report any discrepancies.

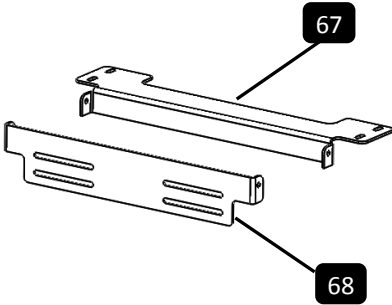
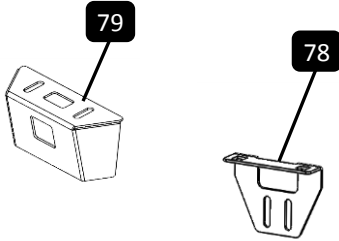
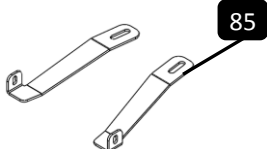
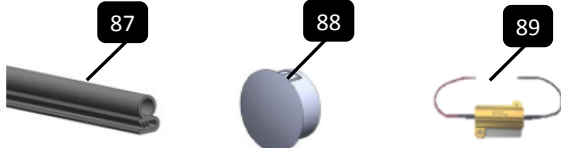
### Steel Bull bar

Item	Component Name	Q'ty	Remarks
1	Bull Bar	1	

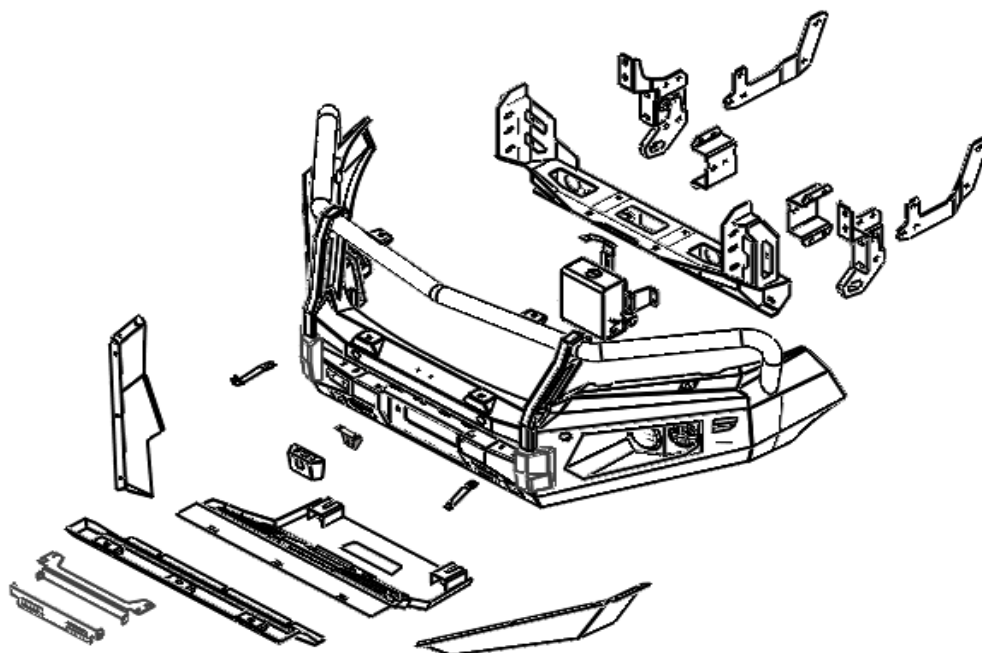
### Chassis Mounts to Vehicle

Item	Component Name	Q'ty	Remarks
2	Chassis mount bracket	1	
3	Bracket supporting chassis outside A (LH / RH)	2	
4	Bracket supporting chassis outside B (LH / RH)	2	
5	Chassis support bracket inside (LH / RH)	2	
6	Crush Tube Ø16 x 53 mm.	4	
7	Hex Bolt M10x35x1.25	6	
8	Hex Bolt M10x35x1.5	8	
9	Hex Bolt M10x55x1.5	4	
10	Hex Bolt M10x90x1.5	4	
11	Hex Bolt M10x110x1.5	2	
12	Spring Washer M10	16	
13	Flat Washer M10 OD27	26	
14	Hex Nut M10x1.5	10	
15	Spring Washer M10	12	
16	Flat Washer M10	16	
17	Hex Nut M10x1.5	8	
18	Hex Bolt M10x35x1.25	4	
19	Flat Washer M10 OD20	8	
20	Flange Nut M10x1.25	4	
21	Hex Bolt M12x35x1.5	6	
22	U-bolt M12x1.5 (90x110)	2	
23	Spring Washer M12	10	
24	Flat Washer M12 OD27	16	
25	Hex Nut M12x1.5	10	

Protection Plate				
Item	Component Name	Q'ty	Remarks	
26	Protection Plate Center 01	1		
27	Protection Plate Center 02	1		
28	Protection Plate (RH)	1		
29	Protection Plate (LH)	1		
30	Hex Bolt M6x20x1.0	10		
31	Spring Washer M6	10		
32	Flat Washer M6 OD20	10		
33	Cage Nut M6x1.0x3T	10		
34	Hex Bolt M8x20x1.25	3		
35	Spring Washer M8	3		
36	Flat Washer M8 OD22	3		
37	Cage Nut M8x1.25x3.2T	3		
38	Hex Bolt M10x25x1.5	3		
39	Spring Washer M10	3		
40	Flat Washer M10 OD27	3		
Windshield Washer Reservoir Bracket				
Item	Component Name	Q'ty	Remarks	
41	PIAK Aluminium_Windshield Washer Bottle OD19 mm._ 2.3L	1		
42	Windshield Washer Bracket A_MPS20			
43	Windshield Washer Bracket B	1		
44	Motor pump windshield washer reservoir bracket	1		
45	Motor pump Headlight Washer reservoir bracket	1		
46	Additional Windshield Water Tank Hose (ID 34,24 X L110 mm.)	1		
47	Wiring harness (L=850 mm.)	3		
48	rubber tube Black (L= 350 mm.)	1		
49	rubber tube clear (L= 350 mm.)	1		
50	Plastic joints	2		
51	Cable Tie (L=150 mm.)	8		
52	Pinch Weld Edge 3 mm. (L 400mm.)	1		
53	Rubber water level sensor	1		
54	Hex Bolt M6x20x1.0	6		
55	Flat Washer M6 OD14	8		
56	Flat Washer M6 OD20	4		
57	Spring Washer M6	6		
58	Flange Nut M6x1.0	6		
59	Button Head Bolt M6x20x1.0 EDP	1		
60	Spring Washer M6 EDP	1		
61	Flange Nut M6x1.0 EDP	1		
62	Flat Washer M6 OD14 EDP	2		

Windshield Washer Reservoir Bracket			
Item	Component Name	Q'ty	Remarks
63	Button Head Bolt M5x15x0.8 EDP	4	
64	Spring Washer M5 EDP	4	
65	Flat Washer M5 OD12 EDP	8	
66	Flange Nut M5x0.8 EDP	4	
License Plate Bracket			
Item	Component Name	Q'ty	Remarks
67	License Plate Bracket (Inner)	1	
68	License Plate Bracket (Outer)	1	
69	Hex Bolt M6x20x1.0	4	
70	Spring Washer M6	4	
71	Flat Washer M6 OD20	6	
72	Button Head Bolt M6x20x1.0	2	
73	Nyloc Nut M6x1.0	4	
74	Nylon Washer	4	
75	Flat Washer M6 OD14	4	
76	Flange Nut M6x1.0	4	
77	Cage Nut M6x1.0x3T	2	
camera Bracket			
Item	Component Name	Q'ty	Remarks
78	camera bracket 1	1	
79	camera bracket 2	1	
80	Hex Bolt M6x20x1.0	4	
81	Spring Washer M6	2	
82	Flat Washer M6 OD14	6	
83	Flange Nut M6x1.0	2	
84	Cage Nut M6x1.0x3T	2	
Front Grill Bracket			
Item	Component Name	Q'ty	Remarks
85	Front Grill Bracket (LH / RH)	2	
86	Pillip Truss Head Tapping M4x20	2	
Accessories			
Item	Component Name	Q'ty	Remarks
87	L250mm.	2	
88	Sensor blanking plugs D25.5x14.5 mm.	4	
89	Load Registor(R-DROP)	2	

## Components Overview



## TORQUE SETTING OF FASTENER

Mounting bolts must be tightened to torque's specified following ;

Bolt Diameter (mm.)	Torque ( Nm )	Torque ( ft.lb )
M6	9	7
M8	22	16
M10	44	32
M12	77	57

## FITTING PROCEDURE



- 1 Locate the vehicle in a suitable position. Rest the bullbar on a surface that will not scratch the bar.



Remove and retain the clips securing the plastic cover between the grille and radiator support panel.



- 3 Remove the OEM Plastic radiator cover the front of car.



- 4 Remove two clips that retain the grille at the top. Keep for re-fitment of grille.

## FITTING PROCEDURE



- 5 Unclip and remove the grille from vehicle and place on a soft surface.

Notice- Refer to vehicle repair manual for correct removal procedure.



- 6 Remove the three M6 bolts retaining the top of the bumper.



- 7 Remove the exterior plastic and remove the three M6 bolts inside the grille that holds the top of the bumper.



- 8 Remove the exterior plastic and remove the three M6 bolts inside the grille that holds the top of the bumper.



## FITTING PROCEDURE



9

Remove and discard lower chrome applique (Both sides).



10

Remove the inner bolts (Both sides).



11

Remove the clips on the fenders and the bolt on the bottom of the bumper.

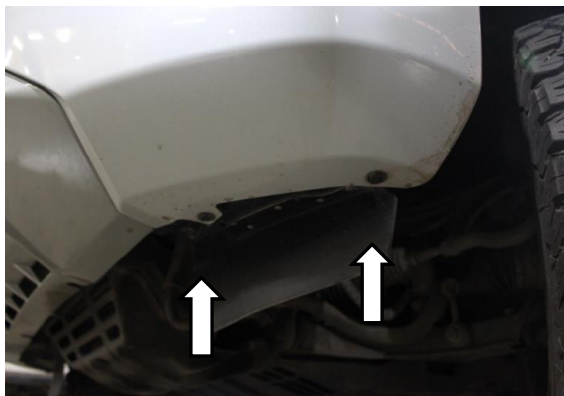


12

Remove five clips that retain the outer edge of the bumper (Both sides).

Keep for re- fitment of bumper.

## FITTING PROCEDURE



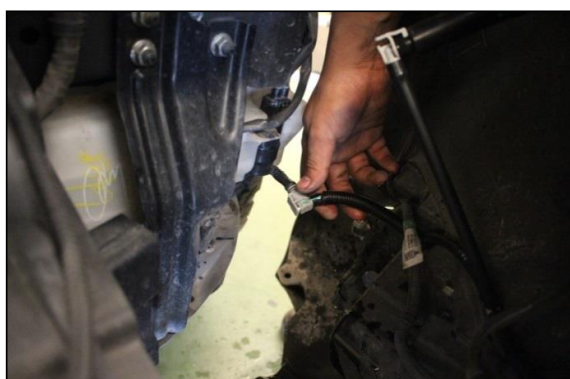
- 13 Remove the original bolts securing the lower section of the bumper (Both sides).



- 14 Unlocked carefully pulled bumper removal.  
Repeat for the opposite side.



- 15 Carefully remove the bumper from the vehicle.  
If unsure about bumper removal refer to the workshop manual.

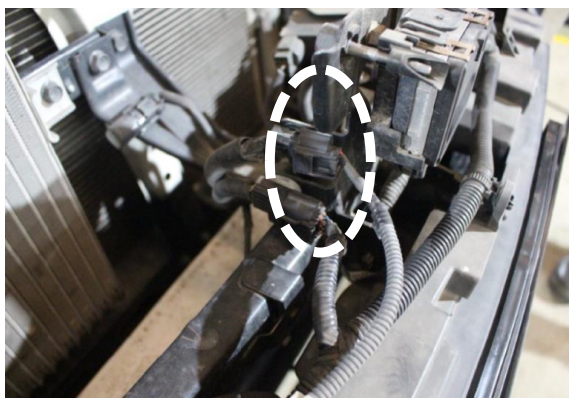


- 16 Unlock water line Headlight Washer Water .

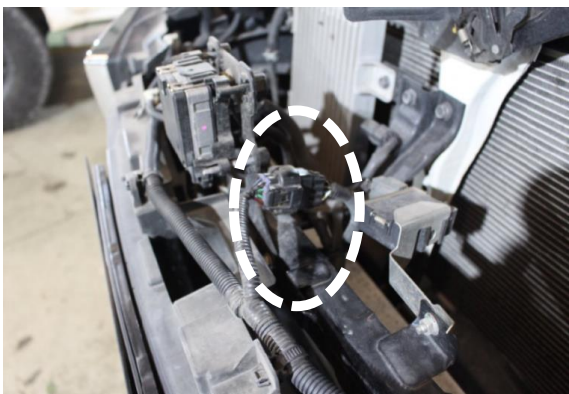
## FITTING PROCEDURE



- 17 Drain the fluid from the washer bottle.



- 18 Disconnect power cable and camera located behind grille.

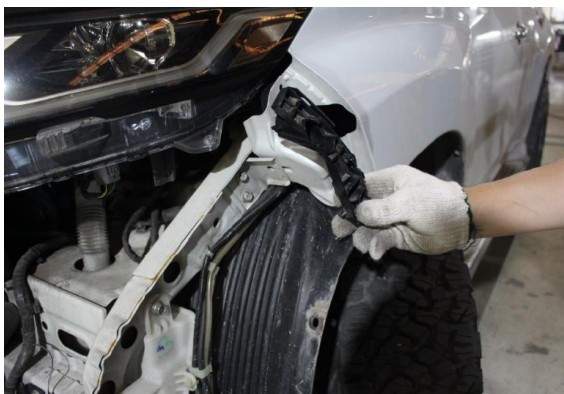


- 19 Disconnect parking sensor located behind grille.



- 20 Remove and discard the outer bumper clips from the front guards.

## FITTING PROCEDURE



- 21 Remove and discard the outer bumper clips from the front guards both sides.



- 22 Remove and discard the inner guard support brackets from both sides of the vehicle.



- 23 Remove the bumper support brackets both sides of the vehicle.



- 24 Remove the five clips securing the Air Deflectors both sides.



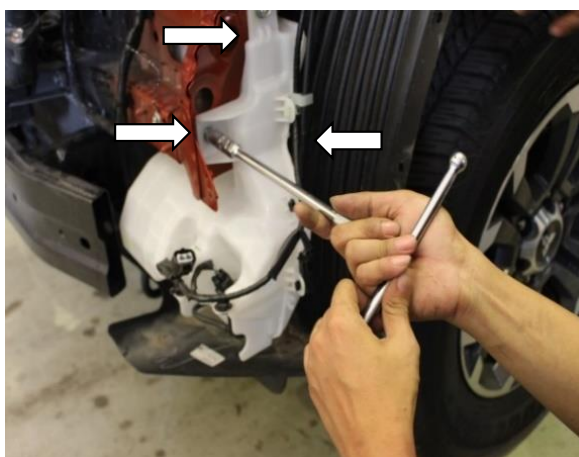
## FITTING PROCEDURE



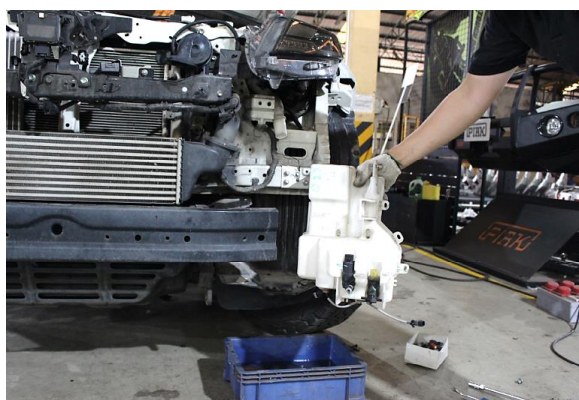
- 25 Remove and discard outer Air Deflectors from both sides of the vehicle.



- 26 Carefully unclip windshield washer reservoir from the hose.



- 27 Remove and retain three screws securing the windshield washer reservoir to vehicle at beside.

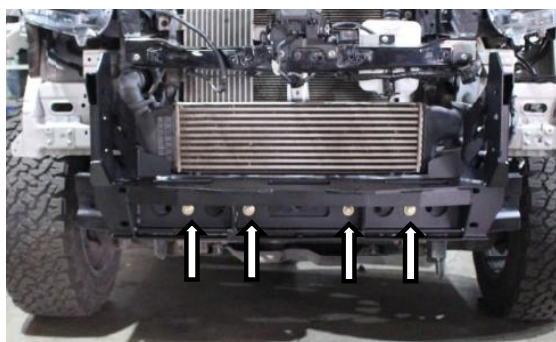


- 28 Carefully remove the tank retain water for windshield washer.

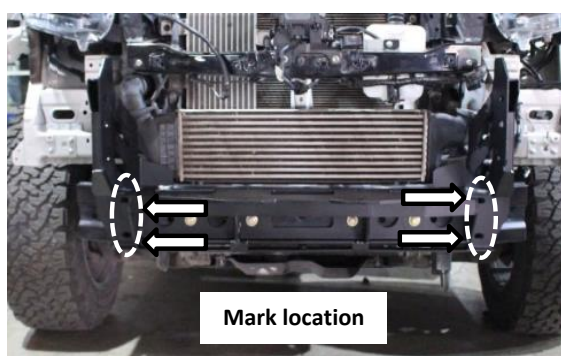
## FITTING PROCEDURE



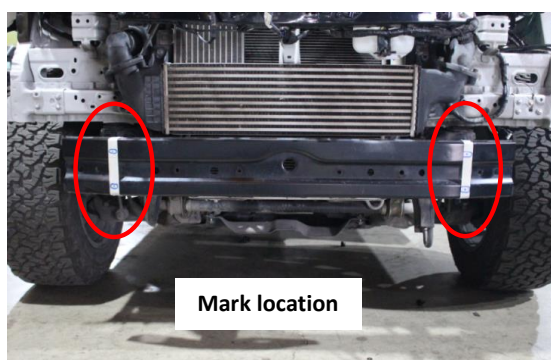
- 29 Lift the chassis mounting bracket onto the chassis of vehicle.



- 30 Using four M10 x 1.25 x 35mm hex bolts, M10 springs and flat washers loosely fit the chassis mount bracket.



- 31 Mark the location of the holes to the front of the impact beam.



- 32 Carefully remove the chassis mounting bracket from the chassis of vehicle for reveal the position that has been marked.

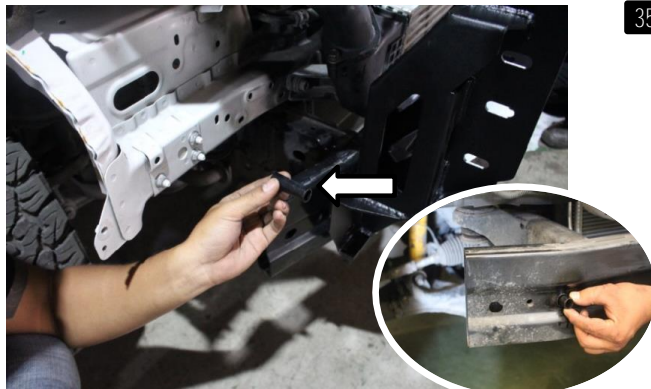
## FITTING PROCEDURE



- 33 Drill a pilot hole through both sections of the intrusion beam . Using a step drill or similar, enlarge the holes to 18mm.



- 34 De-burr and treat the holes with rust preventative paint.

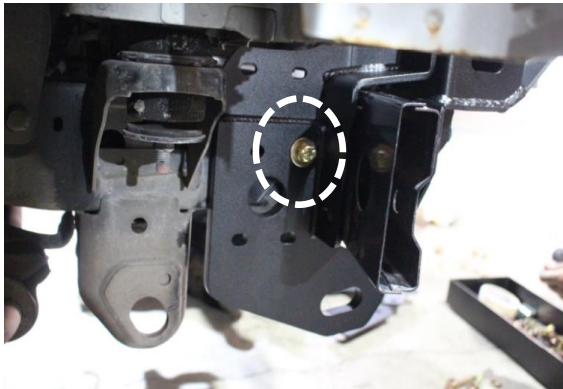


- 35 Put chassis mounting bracket back in and insert two Crush Tubes Ø16 x 48mm into the front intrusion beams both sides of the



- 36 Connect chassis support bracket onto the chassis mount and insert wire bolt through the hole of bracket both sides of the vehicle.

## FITTING PROCEDURE



- 37 Secure with one M10 bolt (M10x35x1.25), Spring and Flat washer as shown both sides of the vehicle.

Do not tighten.



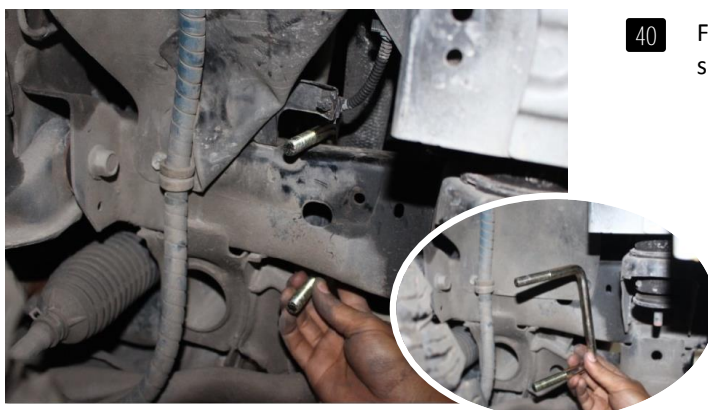
- 38 Secure with one M10 bolt (M10x35x1.5), Spring washer, Flat washer and Hex nut as shown both sides of the vehicle.

Do not tighten.



- 39 Remove the tow clips that retain the rubber plate both sides of the vehicle.

rubber plate

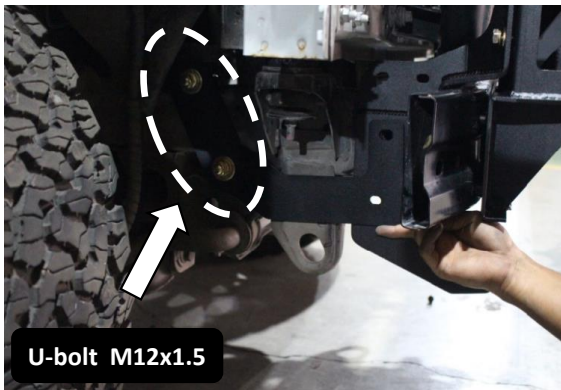


- 40 Fit one U-Bolts onto the chassis of vehicle as shown, both sides of the vehicle.

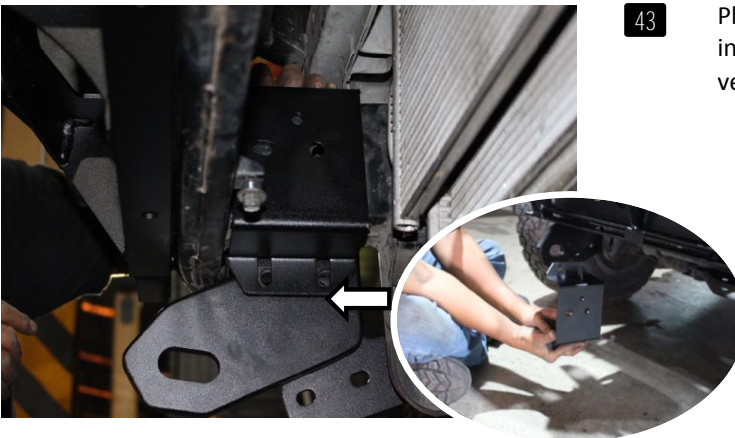
## FITTING PROCEDURE



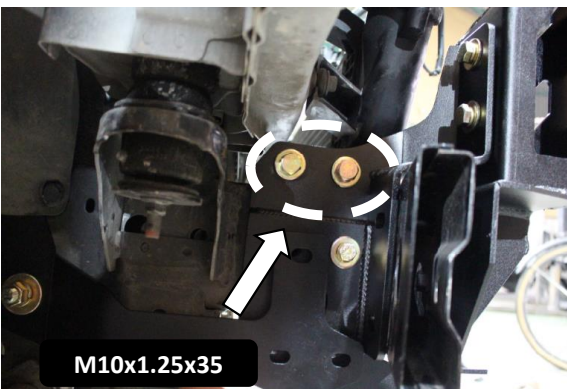
- 41 Connect Chassis support bracket onto the chassis mount fixed to the previously inserted U-bolt. Remove the tow clips that retain the rubber plate as shown, both sides of the vehicle.



- 42 Secure with U-bolt M12x1.5 Spring washers, Flat washers and Hex nuts as shown, both sides of the vehicle.

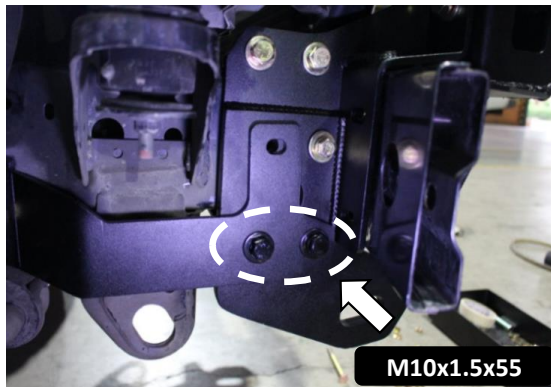


- 43 Place the inner support bracket over the inside of the chassis rails both sides of the vehicle.

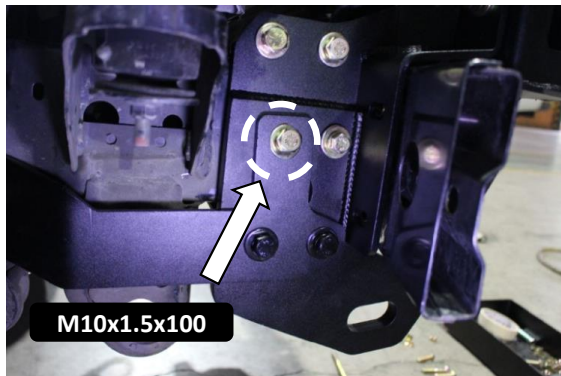


- 44 Secure with two M10 bolts (M10x35x1.25), Spring washers, Flat washers and Flange nuts as shown, both sides of the vehicle.

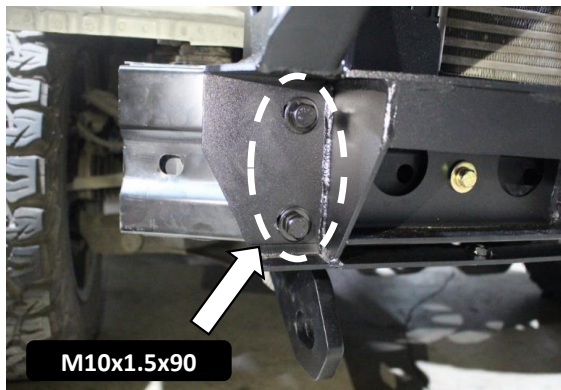
## FITTING PROCEDURE



- 45 Secure with four M10 bolts (M10x55x1.25), Spring washers, Flat washers and Flange nuts as shown, both sides of the vehicle.



- 46 Secure with two M10 bolts (M10x1.5x110), Spring, Flat washers and Hex nuts as shown, both sides of the vehicle.

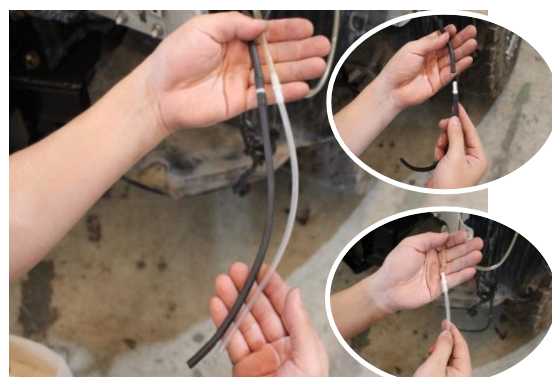
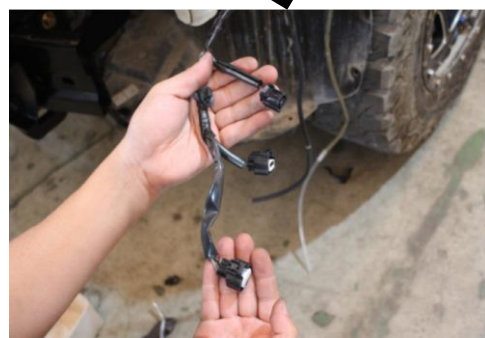
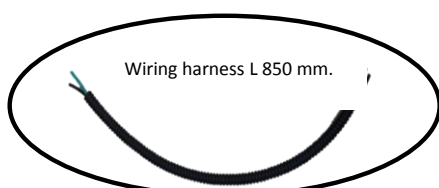
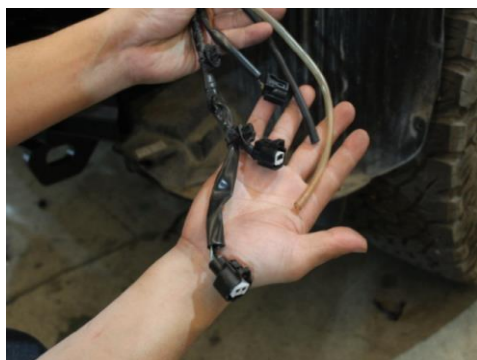


- 47 Secure with two M10 bolts (M10x1.5x90), Spring washers, Flat washers and Hex nuts as shown, both sides of the vehicle.



- 48 Location of winch on the chassis mount bracket.

## FITTING PROCEDURE



49 As shown is plug sensor and motor pump.

50 Using wiring harness L850 mm. Connect the motor cable original and Water Sensor taken.

51 Wear the connector with a hose.

52 Wear the connector with a hose. Connect one end of the cable to the motor at the other end and the original cable.

## FITTING PROCEDURE



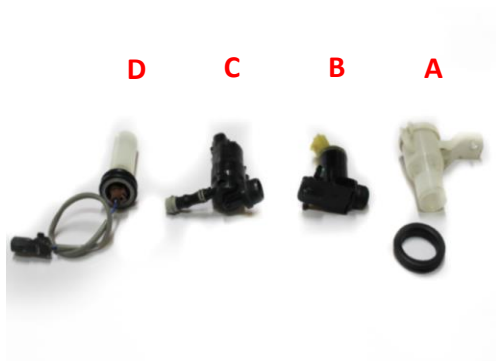
- 53 Remove the parts of original windshield washer reservoir as shown.

\*\*\* (A.) Lid Windshield Washer Bottle.

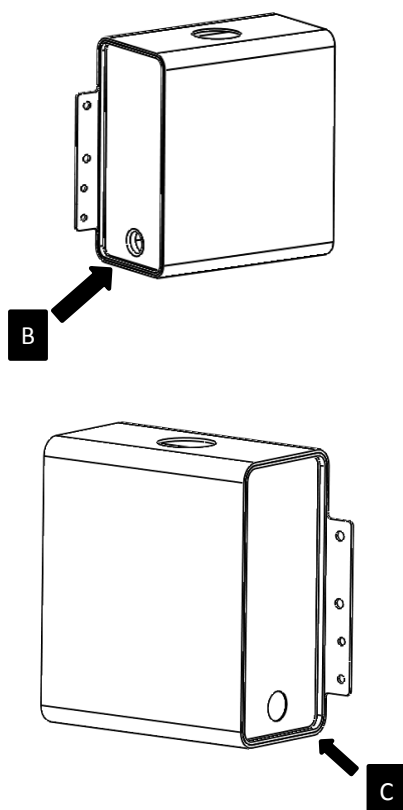
\*\*\* (B.) Motor pump Windshield Washer reservoir .

\*\*\* (C.) Motor pump Headlight Washer reservoir.

\*\*\* (D.) Water Sensor taken.



- 54 location at (B.) Motor pump Windshield Washer reservoir .

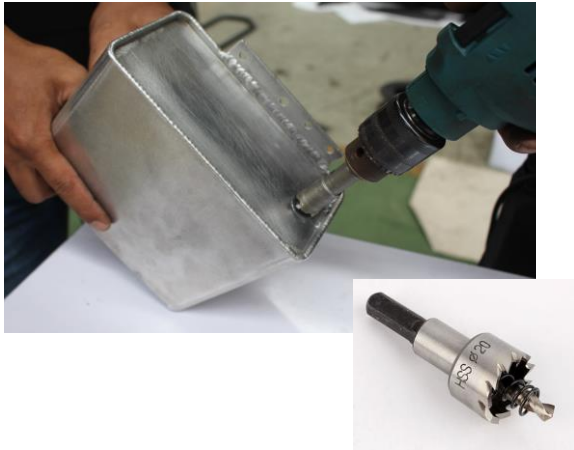
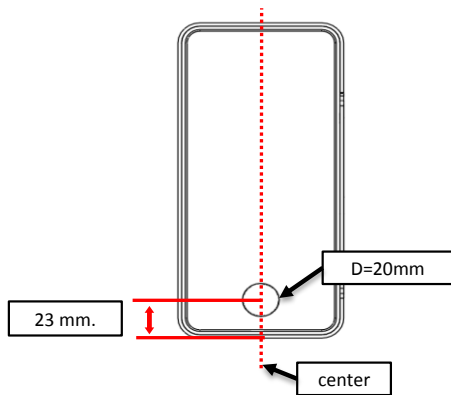


- 55 Measure the center position of the bottom 23 mm. as shown.

Do it carefully

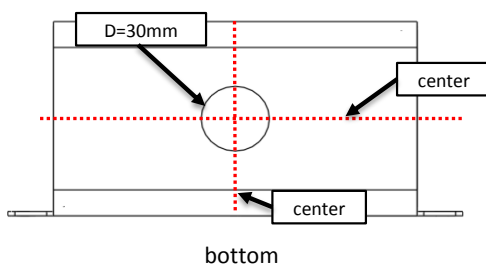
If the car has a Headlight Washer reservoir (C).  
drill (D=20 mm) hole for installation Motor pump Headlight Washer reservoir .

## FITTING PROCEDURE



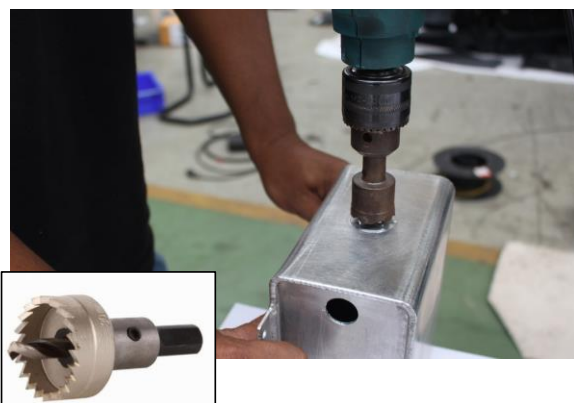
- 56 Drill hole use hole saw 20 mm. as shown. chamfering the drilled edge.

Do it carefully.



- 57 Measure the center position of the bottom.

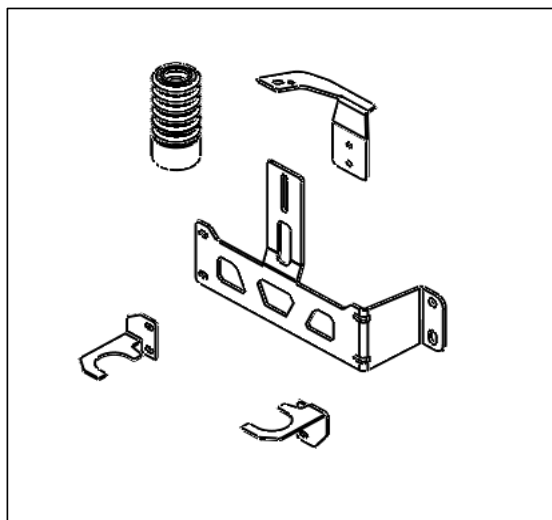
If the car has a Water Sensor taken.  
drill (D=30 mm.) hole for installation Water  
Sensor taken (D).



- 58 Drill hole use hole saw 30 mm. as shown. chamfering the drilled edge.

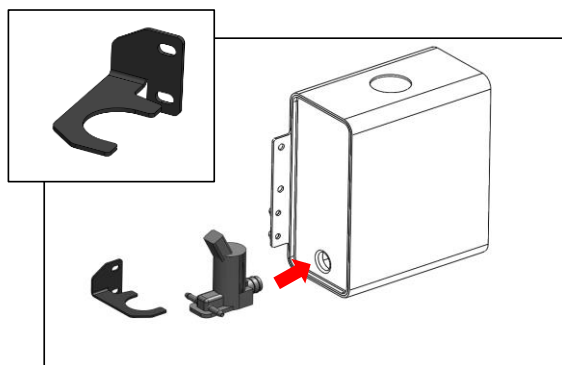
Do it carefully.

## FITTING PROCEDURE



59

Set windshiel washer bracket and Additional Windshield Water Tank Hose (ID 34 X L110 mm.).



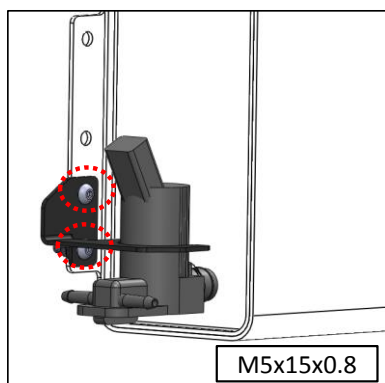
60

Re-install Motor pump Windshield Washer reservoir on the Windshield Washer Bottle. as shown.

Do it carefully.

Fix Motor pump windshield washer reservoir bracket on to the Motor pump and PIAK Aluminium\_Windshield Washer Bottle.

Use two bolts M5x0.8x15 ,Spring Washer ,Flat washers ,and Flange nut.



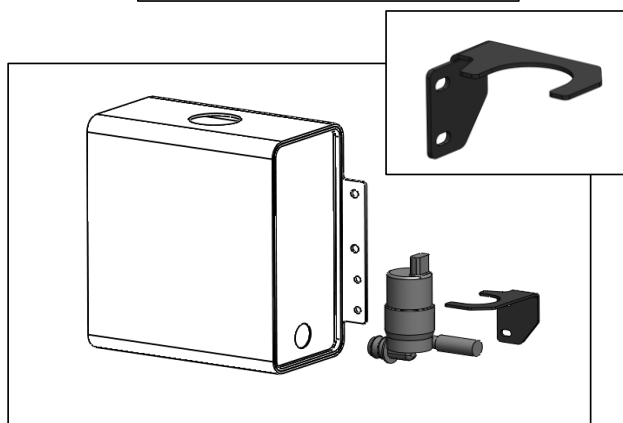
61

Re-install Motor pump Headlight Washer reservoir on the Windshield Washer Bottle. as shown.

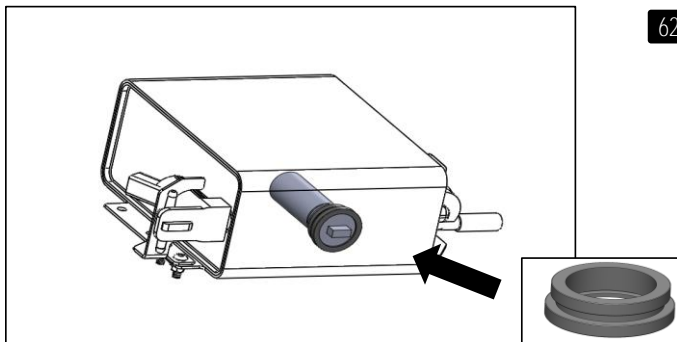
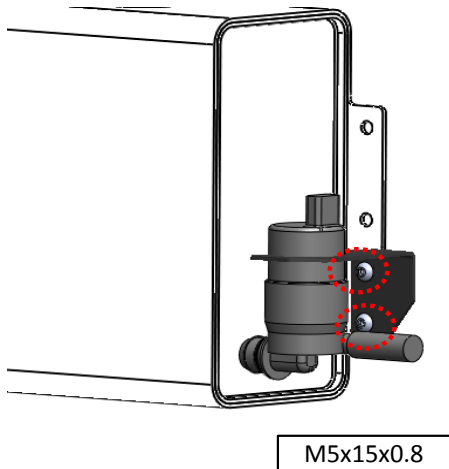
Do it carefully.

Fix Motor pump Headlight Washer reservoir bracket on to the Motor pump Headlight and PIAK Aluminium\_Windshield Washer Bottle.

Use two bolts M5x0.8x15 ,Spring Washer ,Flat washers ,and Flange nut.



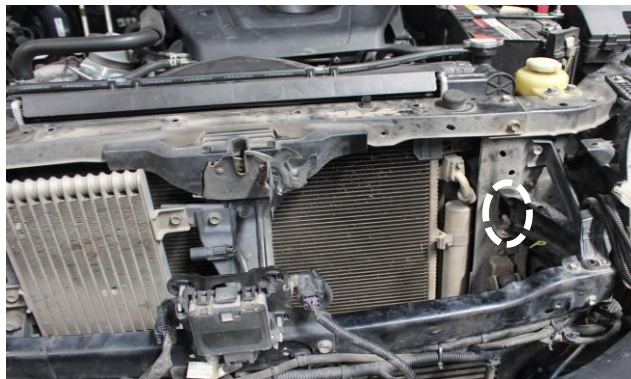
## FITTING PROCEDURE



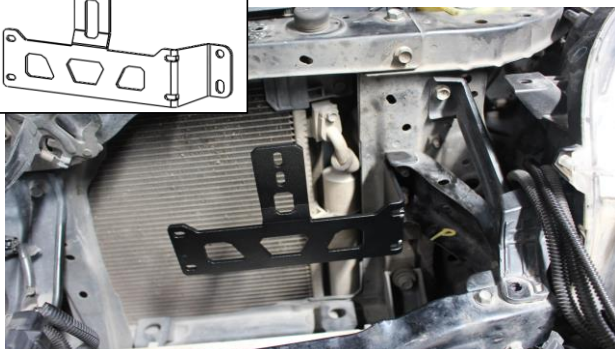
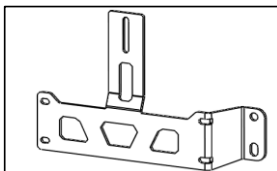
- 62 Re-install Water Sensor taken ,use the Rubber water sensor as shown.

Do it carefully.

**After installed please make sure no water leak from the bottle.**



- 63 Fix Windshield Washer Bracket A on the body car. Using tow original bolts as shown  
use two origina flange nut M8x1.25 .as shown.

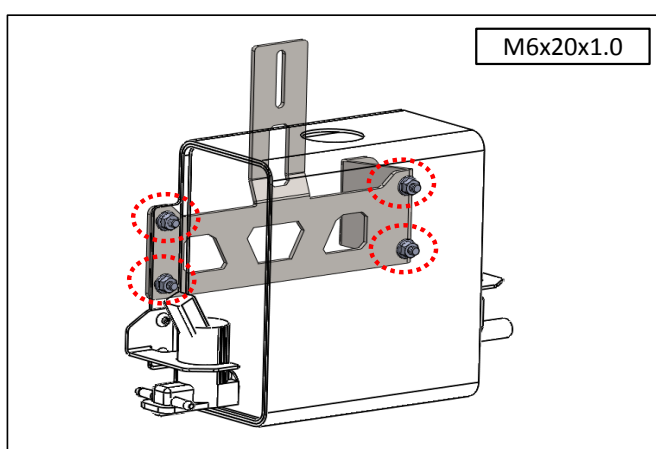


## FITTING PROCEDURE



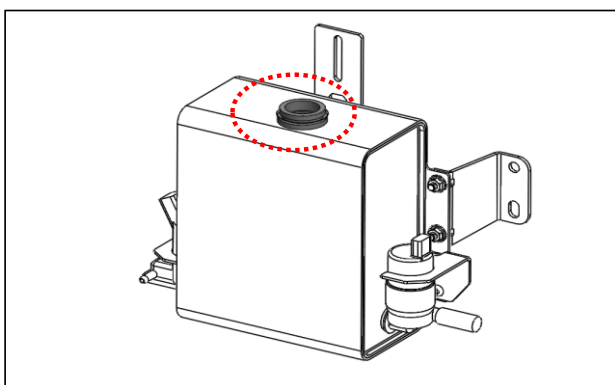
64

Fix PIAK Aluminium\_Windshield Washer Bottle on to the Windshield Washer Bracket A. Use four bolts M6x1.0x20, Spring Washer, Flat washers, and Flange nut, as shown.



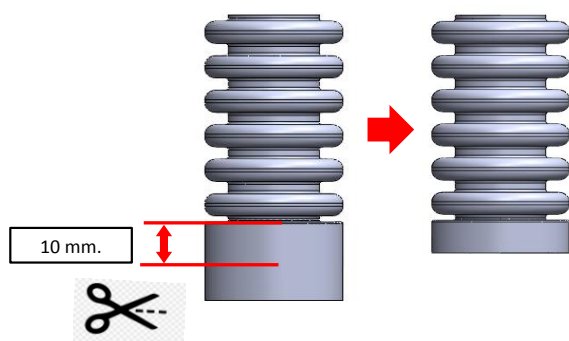
65

Assemble rubber water stop on the Windshield bottle as shown.

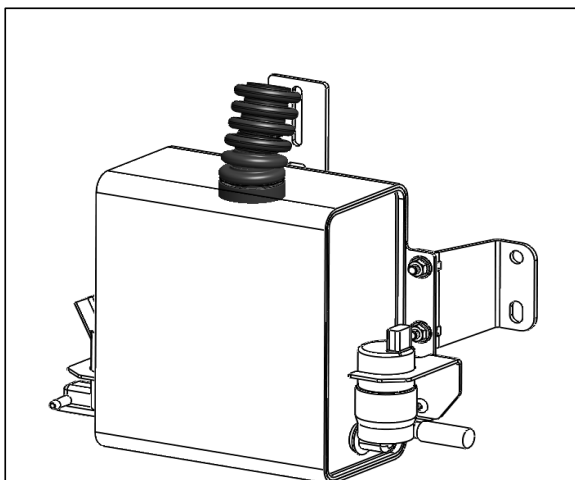


66

Cut Additional Windshield Water Tank Hose as the picture.



## FITTING PROCEDURE



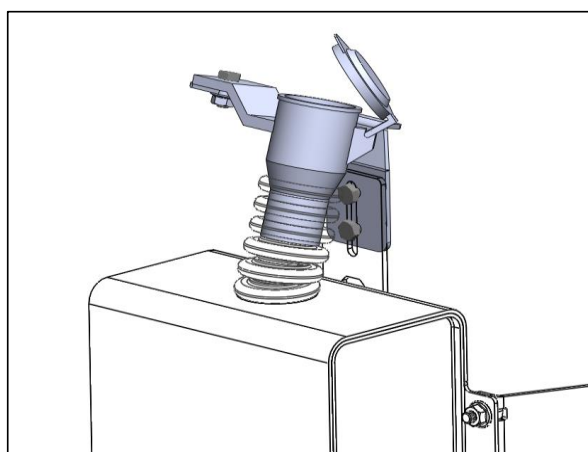
- 67 Assemble Additional Windshield Water Tank Hose as the picture.



- 68 lid Windshield Washer Bottle and Windshield Washer Plate B.



- 69 Fix lid Windshield Washer Bottle and on to the Windshield Washer Plate B. Use hex bolt M6x1.0x20 ,Flat washer and Flange nut.



- 70 Fix set lid Windshield Washer Bottle and on to the Windshield Washer Bracket A. Use two hex bolts M6x1.0x20 ,Flat washers and Flange nuts.

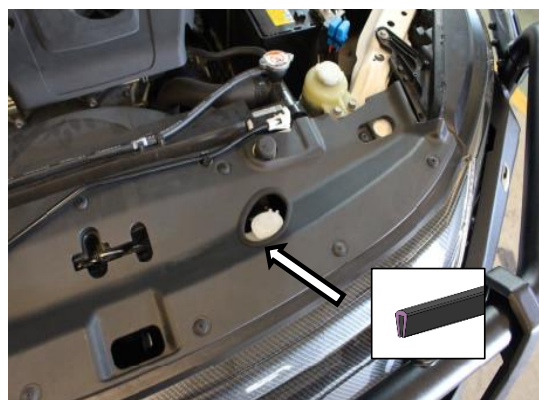
## FITTING PROCEDURE



- 71 Re-fitment the upper bumper and sketch the circles to match the lid Windshield Washer Bottle for drilling.



- 72 Cut into holes. For opening the lid to put water.



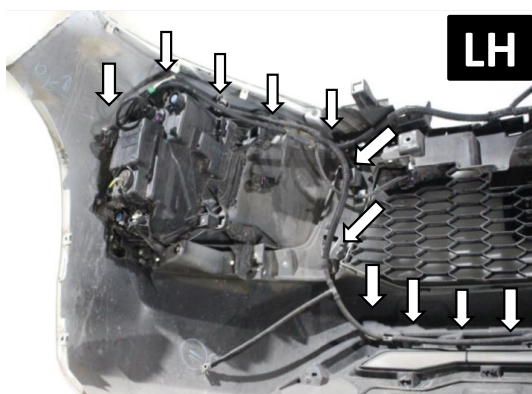
- 73 The drilled hole to use for open-close the lid Windshield Washer Bottle.

Use the Pinch Weld Edge 3 mm. to place at the edge of the cut.

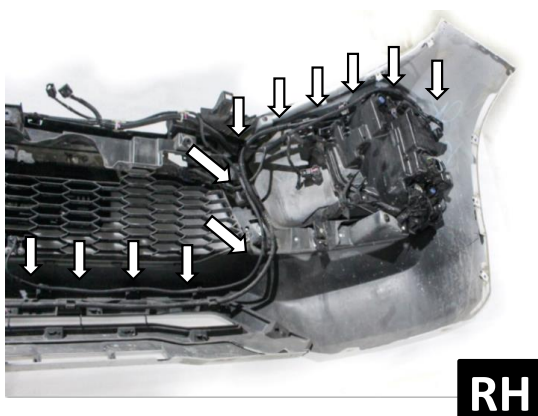


- 74 The inside original bumper.

## FITTING PROCEDURE



- 75 The water line is attached to the original bumper.



- 76 The water line is attached to the original bumper.



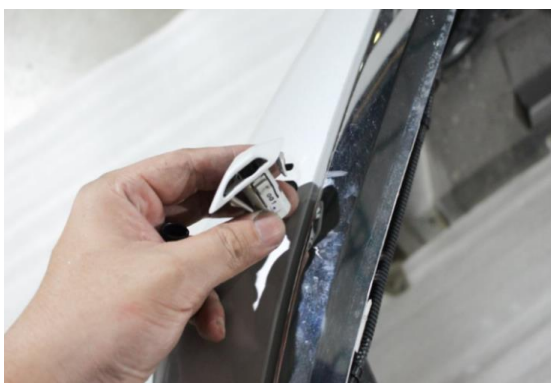
- 77 Mark the location of the water nozzles and remove the water line from the water nozzles.



- 78 Mark the location of the Headlight Washer Water nozzles and remove it.

Do it carefully  
Keep for re- fitment of bumper.

## FITTING PROCEDURE



79

Mark the location of the Headlight Washer Water nozzles and remove the frame of water nozzles .

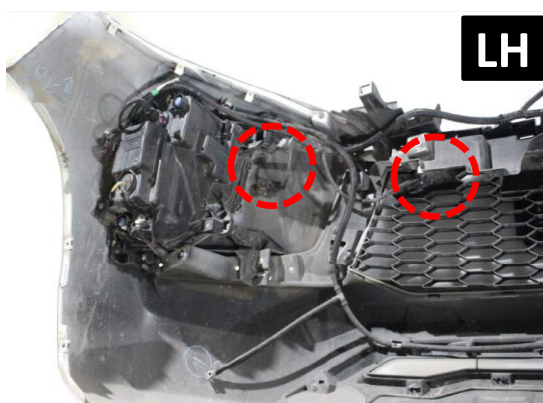
Do it carefully  
Keep for re- fitment of bumper.



80

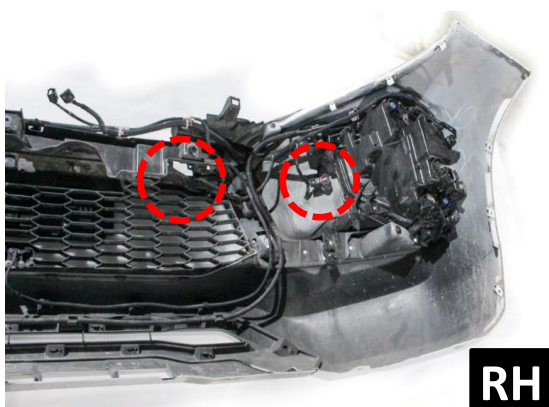
After removing the water line, Headlight Washer Water nozzles and frame of Headlight Washer Water nozzles from the original bumper.

Keep for re- fitment of bumper.  
Repeat for the opposite side.



81

The location of parking sensor loom (where fitted) at the bumper bar.



82

The location of parking sensor loom (where fitted) at the bumper bar.

## FITTING PROCEDURE



83 The location of parking sensor loom (where fitted) at the front of bumper bar.

84 Mark the location of the parking sensor loom (where fitted) at the front of bumper bar and remove parking sensor .

85 After removing parking sensor loom from the original bumper.

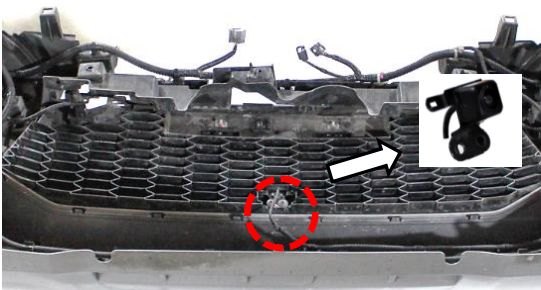
Keep for re- fitment of bumper.  
Do it carefully



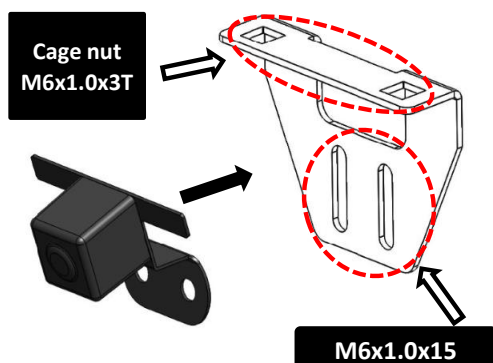
86 The location of camera (where fitted) at the bumper bar.

Remove camera (where fitted) at the bumper bar.

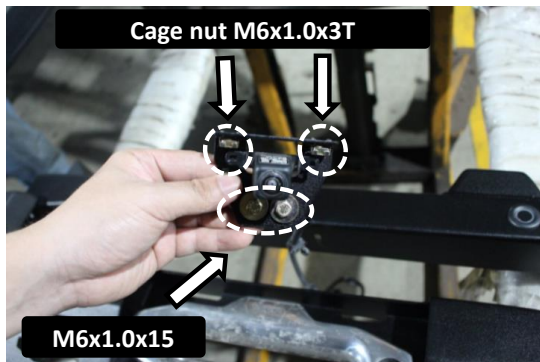
Keep for re- fitment of bumper.  
Do it carefully



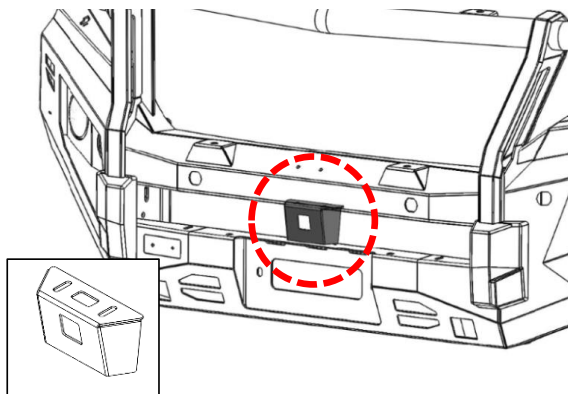
87 Attach the camera to the camera bracket 1 and use two the Cage nuts M6x1.0x3T and two Hex bolts M6x1.0x20 ,Flat washers and Flange nuts to mount as shown.



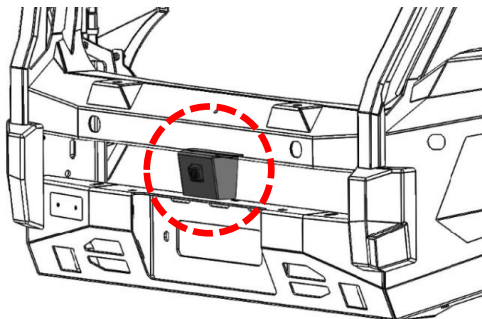
## FITTING PROCEDURE



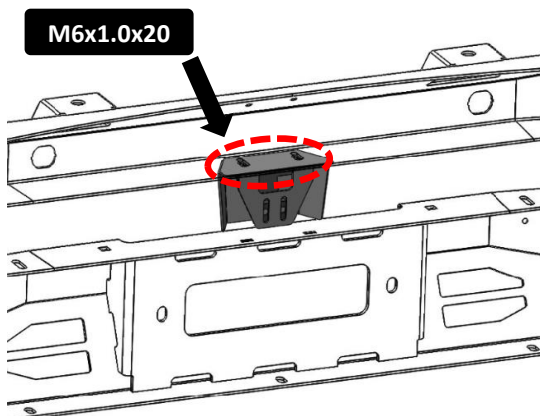
88 After insert Cage nut M6x1.0x3T and two Hex bolts M6x1.0x20 ,Flat washers and Flange nuts.



89 Attach the camera bracket 2 to the bumper bar as shown.



90 Bring the camera attached to the camera bracket 1 come to assemble with camera bracket 2 That is attached to the bumper bar with the top holes of camera bracket matching.



91 Use two the Hex bolts M6x1.0x20 , spring washer and Flat washer to mount with cage nut as shown.

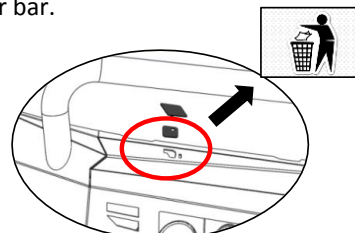
## FITTING PROCEDURE



92

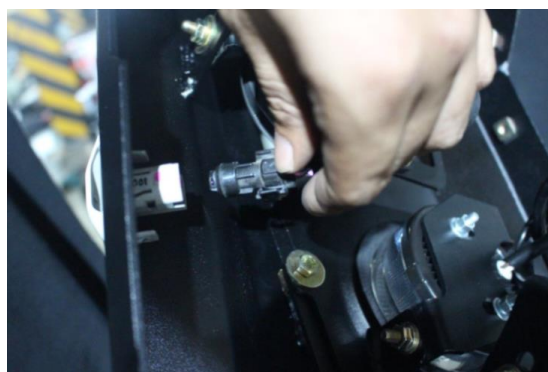
Location of Headlight Washer Water nozzles for re-fitment.

Remove Headlamp Washer plugs from the bumper bar.



93

Re-install the frame of Headlight Washer Water nozzles to fitment bumper bar.



94

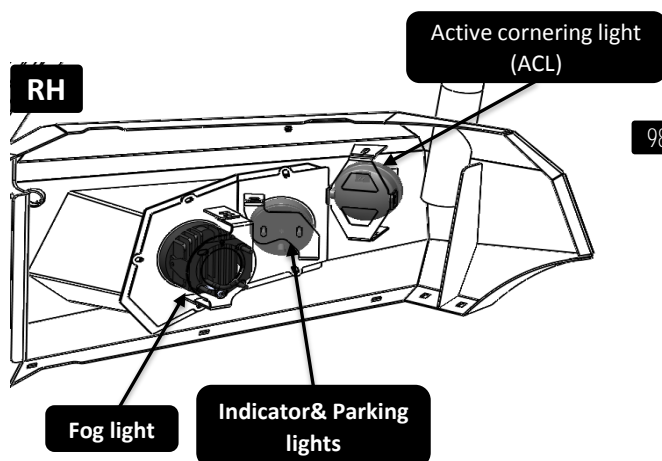
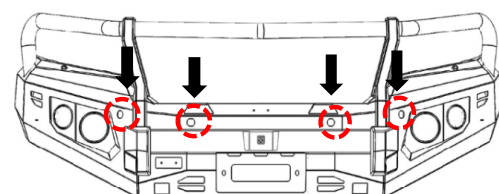
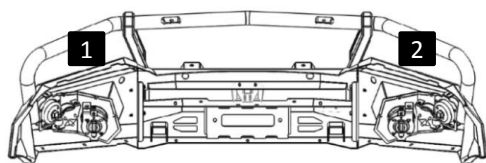
Re-install the Headlight Washer Water nozzles to fitment bumper bar.



95

After insert frame of Headlight Washer Water nozzles and Headlight Washer Water nozzles to the bumper bar.

## FITTING PROCEDURE



96 Bring the water line connect to number as shown.

1. Headlight Washer Water nozzles left hand.
2. Headlight Washer Water nozzles right hand.
3. Windshield Washer bottle.

97 Re-install the parking sensor to the bull bar.

98 Location of the lights on the bumper.

99 Due to the "CAN bus" wiring system of the vehicle a "LED Load Resistor" supplied with kit must be wired in, see resistor pack ageing for wiring details. Both sides.

### PIAK LED Harness codes

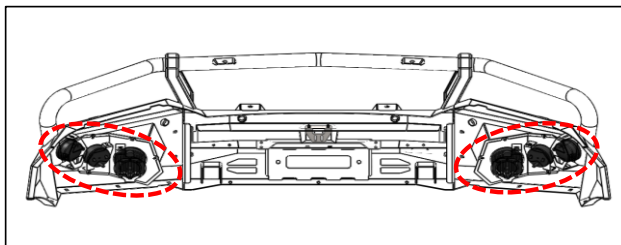
- Indicator Yellow
- Park brown
- Earth White

Repeat for the opposite side.

## FITTING PROCEDURE



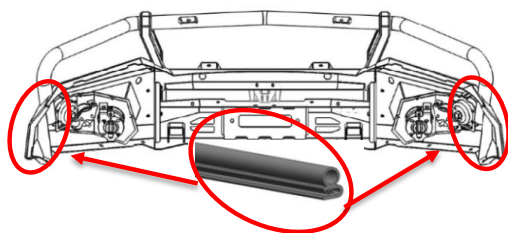
- 100 Using a LED test lamp or multi meter locate the "Parking Lights" wires. Wires are located behind the headlamp inside the engine bay.



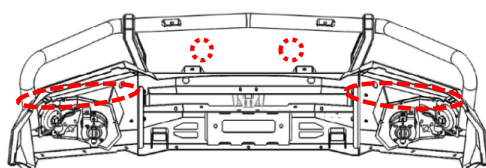
- 101 Re-install wiring harness . Solder the Fog light , Indicator& Parking light . And connect the sensors.



### Pinchweld rubber seal



- 102 Insert pinchweld rubber seal Put the end RH&LH as shown.

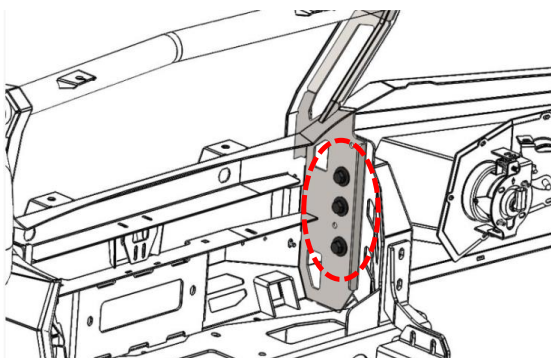


- 103 Insert twelve M6x1.0x3T cage nuts onto the bullbar as indicators.

## FITTING PROCEDURE



- 104 Lift the bullbar onto the chassis of the vehicle.



- 105 Secure bull bar onto the chassis mounting bracket by using three M12 bolts (M12x1.5x35), spring washers, flat washers and hex nuts.

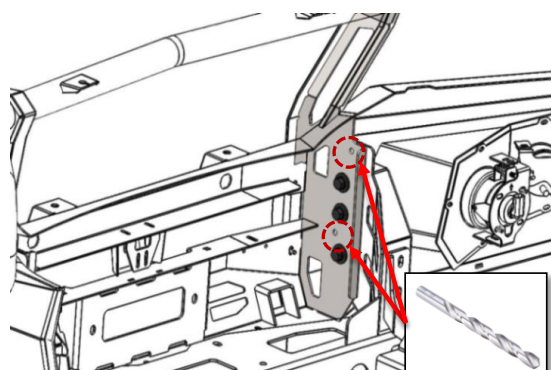
Repeat for the opposite side.  
Do not tighten.



- 106 Align the bar so there is a minimum 20 mm. gap between the car and wing return of the bar and the end of the wing is in line with the wheel arch.

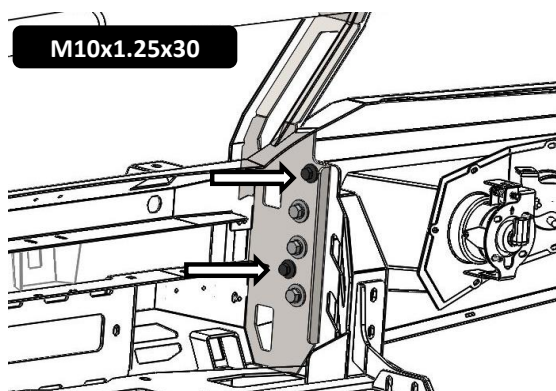
If the bar does not sit centrally across the front of the vehicle, loosen the chassismount and adjust accordingly.

Tighten all bolts to the correct torque.

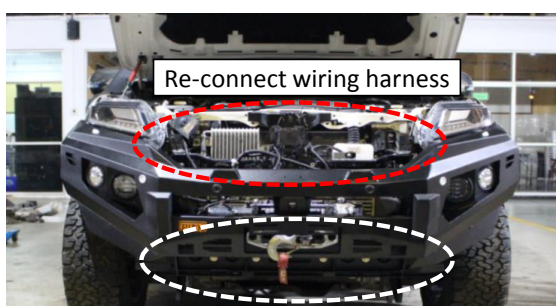


- 107 Drill two 10 mm holes through the chassis mount bracket by using holes on the bullbar as a guide and painted with rustproof paint.

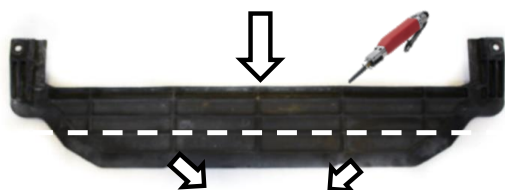
## FITTING PROCEDURE



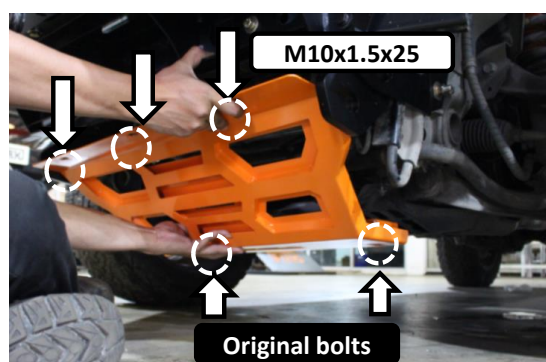
- 108 Secure with two M10 bolts (M10x30x1.25) spring washers ,plate washers and flange nuts.



- 109 Re-connect wiring harness that has been disconnect in the topic 19-20.



- 110 Take out the windshield from under body protection and use a saw to cut it as shown.



- 111 Install the Protection Plate Center 02 on to the under body of car as shown.

Secure three Hex bolts M10x1.5x25 on the top and use two the Original bolts at the bottom as indicators.

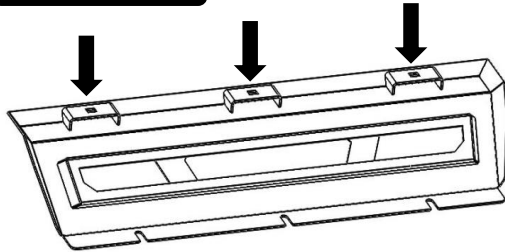
Do not tighten.



- 112 After install the Protection Plate Center 02 .

## FITTING PROCEDURE

M8x1.25x3.2T



- 113 Insert three Cage nuts M8x1.25x3.2T on the Protection Plate Center 01 as shown



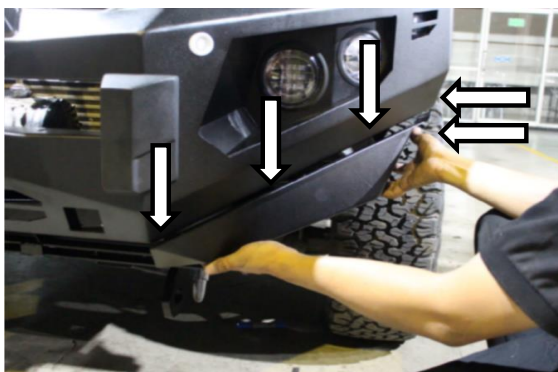
- 114 Install the Protection Plate Center 01 on Protection Plate Center 02 on to the under body of car as shown.

Secure three Hex bolts M8x1.25x20 Spring washers and flat washers as shown.



- 115 Use a saw to cut off the fenders as shown.

Repeat for the opposite side.



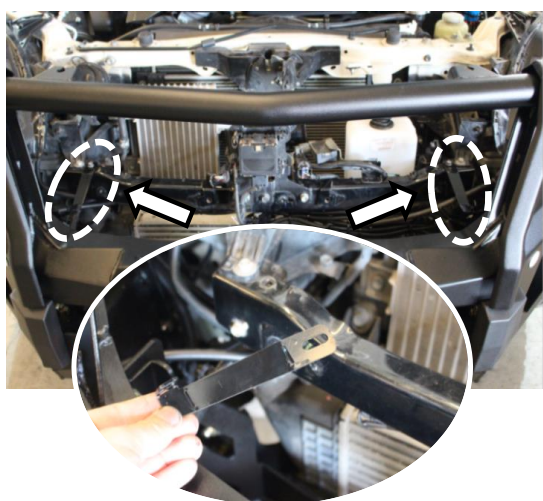
- 116 Fit the Protection Plate (LH) onto the bullbar. Using five M6 x 1.0 x 20mm hex bolts, spring washers and flat washers.

Repeat for the opposite side.

## FITTING PROCEDURE



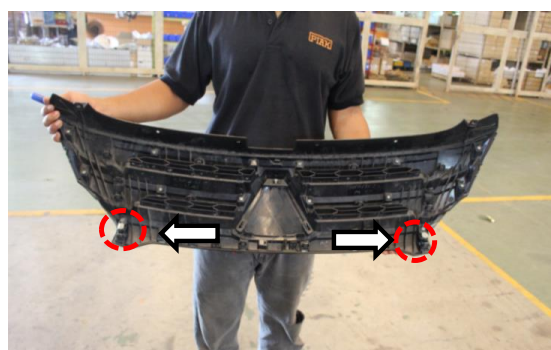
117 After fit the Protection Plate .



118 Attach the Front grille bracket to the grille using the tek screws that are at the back of the grille.



119 Insert the grille to mark the location for drilling holes in the grille.



120 Drilling holes 3 mm. in the grille at location as shown for mounting front grille bracket.

## FITTING PROCEDURE



- 121 Fit the Front Grille Bracket on to the grille use the Phillip Truss Head Tapping M4x20 for mounting both sides.

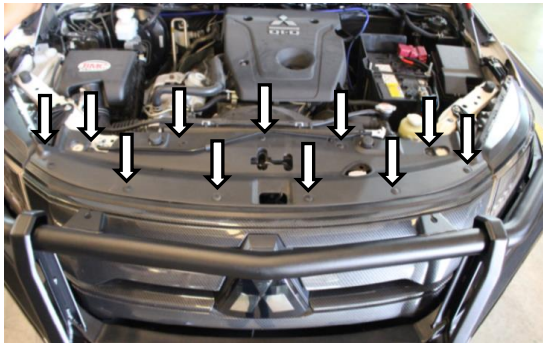


- 122 Re-install the front grill removed earlier to the vehicle by using original bolts.

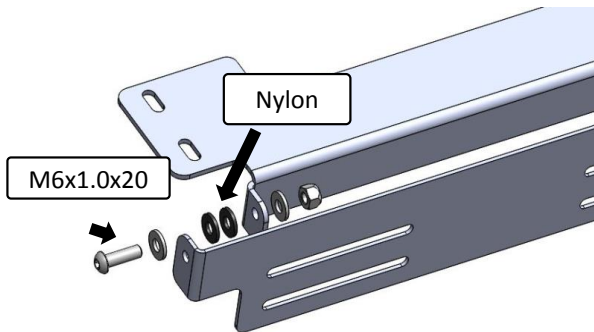


- 123 Re-install the OEM Plastic radiator cover to the vehicle .

## FITTING PROCEDURE



- 124 Re-install the clips to the OEM Plastic radiator cover .



- 125 Assemble License Plate Bracket (Inner) and License Plate Bracket (Outer) by using two M6 button head, flat washer, Nylon Washer M6 and nyloc nut as shown.

Do not fully tighten.

