



ELITE 3-LOOP WINCH BAR

FITTING INSTRUCTIONS



TOYOTA LAND CRUISER LC70 SERIES PK105SLC70E

Fitting Time : approx. 3 hours



BULL BAR SAFETY NOTICE:

INSTALLATION SHOULD ONLY BE DONE BY APPROPRIATELY QUALIFIED OR EXPERIENCED PERSONS
IN ACCORDANCE WITH THESE INSTRUCTIONS.

IT IS THE RESPONSIBILITY OF THE INSTALLER TO ENSURE THAT THE PRODUCT IS CORRECTLY FITTED.

WARNING:

Do not attach Vehicle Frontal Protection System (**VFPS**) to the vehicle using anchorages not intended for this purpose. (e.g. engine mounting bolts)

Do not use this product for any vehicle make or model, other than those specified by the VFPS manufacturer.

Do not remove the plaque or label from the VFPS.

Do not modify the structure of the VFPS in any way.

The VFPS has been produced to provide continued functionality of parking sensors and other "driver assist" features as closely as possible to Original Equipment. However, as all possible road conditions and combination of other accessories fitted to the vehicle which may affect functionality characteristics cannot be anticipated, ***the driver remains responsible at all times for properly controlling the vehicle, monitoring all "driver assist" features and intervening where required to ensure the vehicle is safely operated.***

IMPORTANT INFORMATION:

Before installing the VFPS:

Check that all components, as listed in the assembly table, are available.

Thoroughly read all instructions.

This product or its fasteners must not be modified in any way.

These instructions are accurate as at the revision date and do not take into account any changes made by the vehicle manufacturer to vehicle design after the revision date or other accessories that are or have been fitted to the vehicle. Piak cannot be held responsible for such changes and appropriate enquiries should be made before installation.

Before installing, inspecting and/or maintaining the VFPS, the work space should be safe and clear of fuel, debris, electrical or other components.

During installation:

It is the responsibility of the installer to confirm correct operation/clearance of all components. All holes drilled shall have all burrs and swarf removed then coated with a suitable rust preventative paint.

Ensure that all hardware is fastened to torque list as detailed in these instructions.



MAINTENANCE AND CARE:

To ensure continued safety and correct operation of the product, the VFPS must be routinely inspected and regularly serviced (including bolt torque checked for correct tension) by an appropriately qualified or experienced person.

The high tensile fasteners supplied with this product were used to achieve the specified rating. If replacement of the fasteners is required, fasteners of the same rating and quality must be used.

If this VFPS is fitted with a hinged number plate bracket, extra care must be taken when returning back to public roads following the use of the winch or conducting a deep water crossing.

The driver must ensure that the number plate bracket is returned back to the down position allowing full visibility of the number plate when returning to public roads.

EQUIPMENT:

These safety products should, at a minimum, be used when fitting or working on the product.



Protective Glasses



Hearing Protection

Installation in accordance with these instructions and adherence to warnings will ensure compliance with relevant regulatory and safety standards as at the revision date.

Failure to adhere to these instructions may affect the roadworthiness of the vehicle or cause personal injury, death or damage to property.

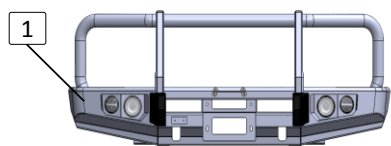
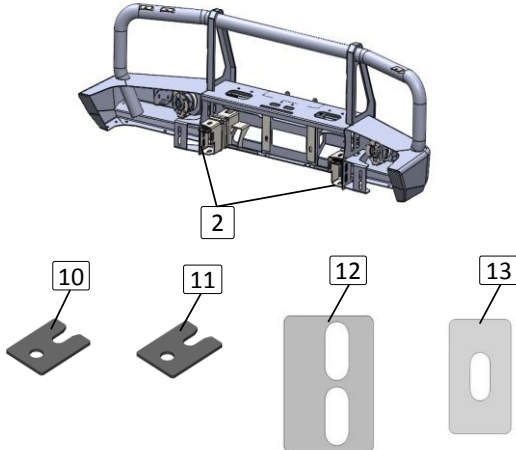
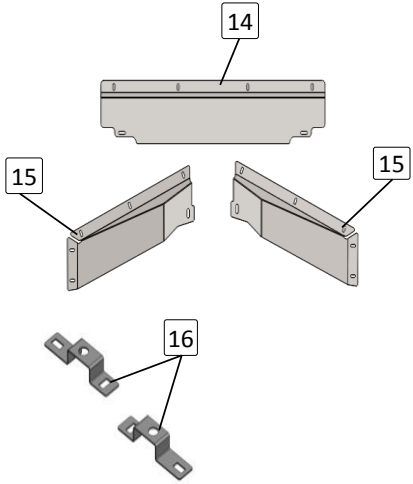
BY USING THIS PRODUCT YOU ACKNOWLEDGE AND AGREE THAT TO THE EXTENT PERMITTED BY LAW PIAK WILL NOT ACCEPT LEGAL OR OTHER LIABILITY FOR ANY LOSS, INJURY OR DAMAGE CAUSED BY INCORRECT OR INAPPROPRIATE INSTALLATION OR USE OF THE PRODUCT.

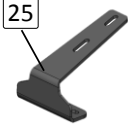
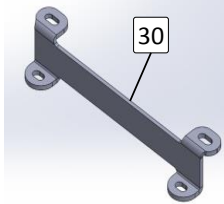
TOOLS REQUIRED

1. Torque , Socket wrench
2. Screw driver
3. Open spanner

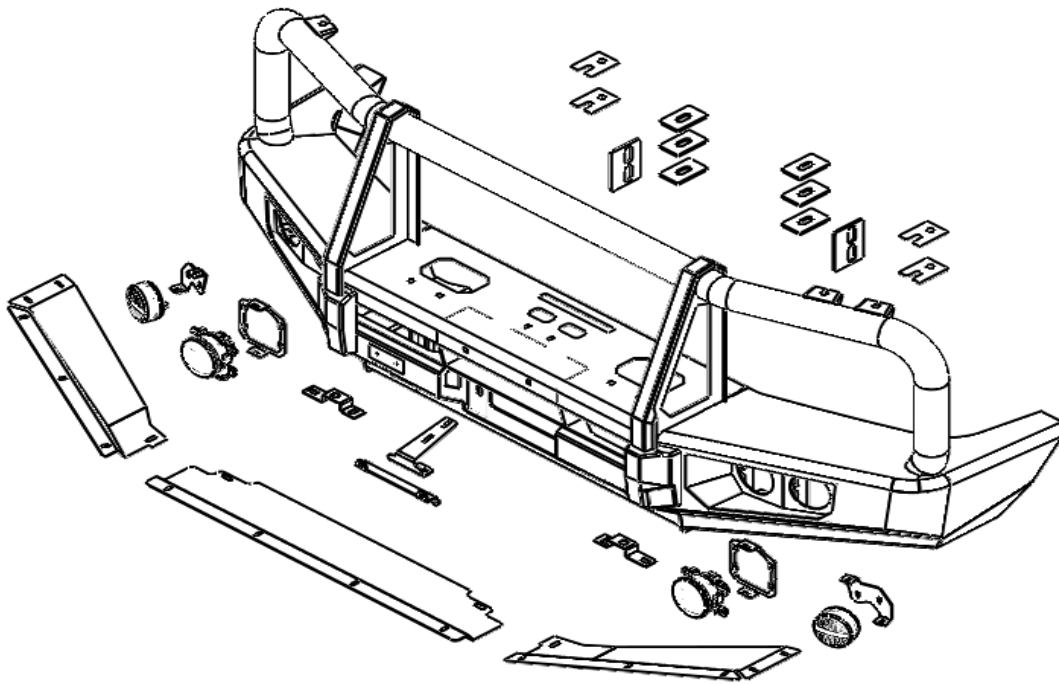
PARTS LIST

⚠ Important : Check contents of fitting kit before commencing fitment and report any discrepancies.

Steel Bull Bar			
Item	Component Name	Q'ty	Remarks
1	Winch Bull Bar	1	
Chassis Mounting Bracket (RH & LH)			
Item	Component Name	Q'ty	Remarks
2	Chassis Mounting Bracket (RH&LH)	2	
3	Hex Bolt M12x170x1.75	2	
4	Spring Washer M12	2	
5	Flat Washer M12	4	
6	Hex Nut M12x1.75	2	
7	Hex Bolt M10x30x1.25	10	
8	Spring Washer M10	10	
9	Flat Washer M10	10	
10	Spacer 75x55x3 mm.	4	
11	Spacer 75x55x2 mm.	4	
12	Spacer 75x100x5 mm.	4	
13	Spacer 50x80x5 mm.	12	
Protection Plate			
Item	Component Name	Q'ty	Remarks
14	Protection Plate (Center)	1	
15	Protection Plate (RH & LH)	2	
16	Protection Plate Bracket	2	
17	Hex Bolt M6x20x1.0	14	
18	Flat Washer M6	14	
19	Spring Washer M6	14	
20	Cage Nut M6x1.0x3T	14	
21	Cage Nut M8x1.25x2T	4	
22	Hex Bolt M8x25x1.25	4	
23	Spring Washer M8	4	
24	Flat Washer M8	4	

Winch Control Plate			
Item	Component Name	Q'ty	Remarks
25	Winch Control Plate	1	
26	Hex Bolt M6x20x1.0	2	
27	Flat Washer M6	4	
28	Flange Nut M6x1.0	2	
29	Spring Washer M6	2	
License Plate Bracket			
Item	Component Name	Q'ty	Remarks
30	License Plate Bracket	1	
31	Hex Bolt M6x20x1.0	4	
32	Spring Washer M6	4	
33	Flat Washer M6	6	
34	Cage Nut M6x1.0x3T	2	
35	Flange Nut M6x1.0	2	

Components Overview



TORQUE SETTING OF FASTENER

Mounting bolts must be tightened to torque's specified following ;

Bolt Diameter (mm.)	Class 8.8		Class 10.9	
	Torque (Nm.)	Torque (ft-lb.)	Torque (Nm.)	Torque (ft-lb.)
M6	10.5	7.7	15	11.1
M8	25.5	18.8	36.5	26.9
M10	50.5	37.2	72.2	53.3
M12	88	64.9	126	92.9
M14	140	103	200	148

FITTING PROCEDURE



- 1 Locate the vehicle in a suitable area.

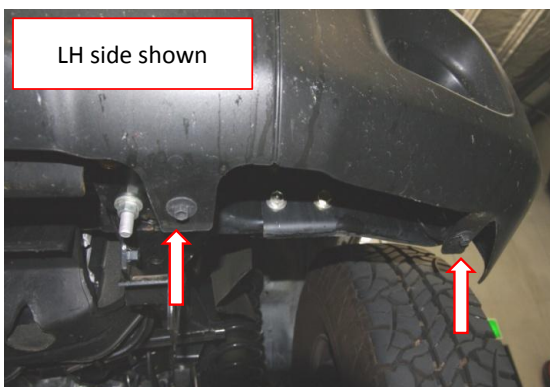
Remove the number plate from the bumper.



- 2 Remove and discard the five plastic scrivenets at the rear of the bumper cover.

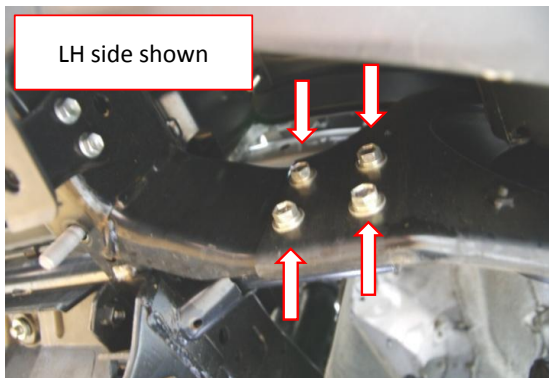


- 3 Remove and discard the nut retaining the bumper cover to the bumper frame at the wheel arch on each side.



- 4 Remove and discard the four bolts attaching the bumper at the bottom of the bumper cover.

FITTING PROCEDURE



- 5** Remove and discard the four (each side) bolts attaching the bumper frame to the vehicles chassis outrigger.

Lift up the two corners of the bumper cover at the wheel arch so the bolts are free from the bumper top frame and remove the bumper cover. Discard the bumper cover.



- 6** Remove and discard the four bolts retaining the bumper top frame to the bumper inner frame.
Remove and discard the bumper top frame.



- 7** Remove and discard the two vertical bolts attaching the bumper inner frame to the vehicle chassis.



- 8** Remove and discard the inner bumper frame.

NOTE: Do not remove the tow hook.

FITTING PROCEDURE



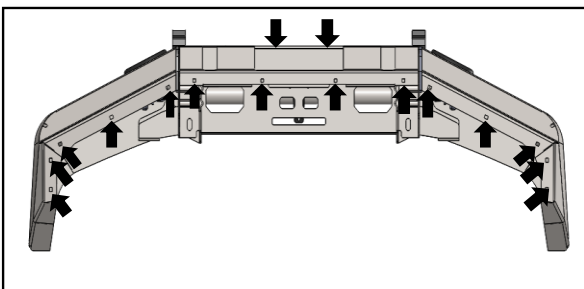
- 9 Remove the lower wheel arch cover to gain access to the indicator loom.



- 10 Using a test light determine the positive and negative wires for the indicator and the positive wire for the park light. Attach the bull bar combination lamp loom to the vehicles loom.

PIAK LED Harness codes

- Indicator Yellow
- Park brown
- Earth White



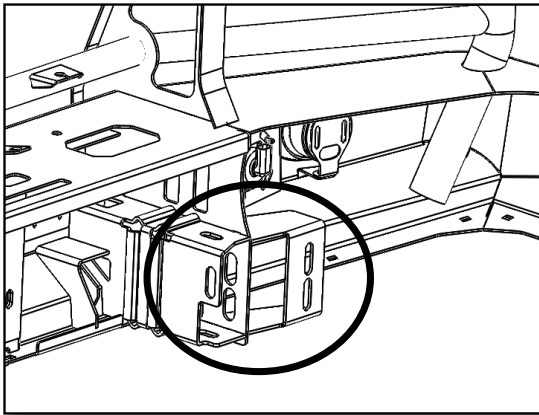
- 11 Insert the 16 cage nuts to the bull bar. Five on each side of the bull bar, four in the center for the protection plates and two in the center for the number plate.

If a winch is being fitted fit to the bull bar now. Follow the instructions supplied with the winch for fitment.



- 12 Using two people, lift bullbar on to chassis mounting bracket fitted to chassis of vehicle.

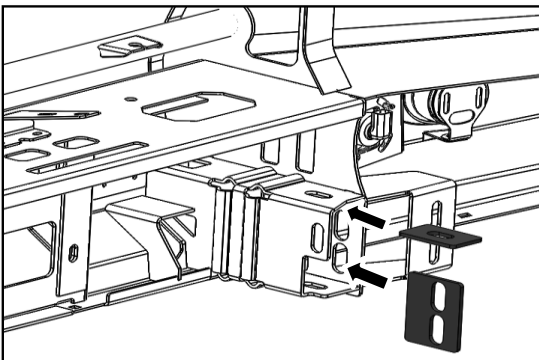
FITTING PROCEDURE



13

Locate Chassis Mounting Bracket Insert the Space .car model LC 70 DC/SC 2007-2016,LC 70 DC 2017 NO .

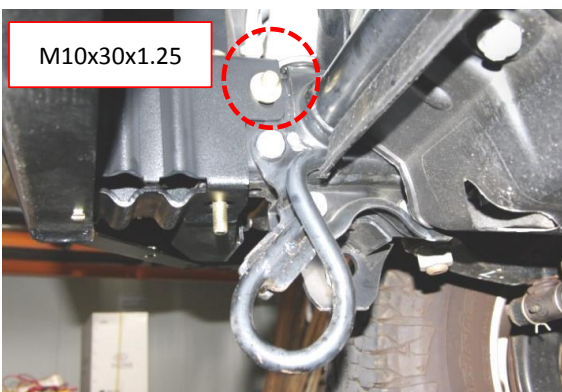
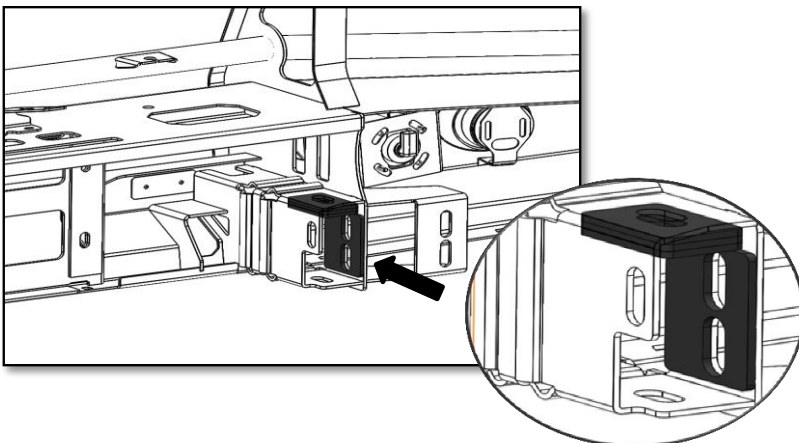
NOTE: LC 70 SC 2017 NO Insert the Space .



14

Insert the Three Spacer 50x80x5 mm. Top of chassis, Insert the one Spacer 75x100x5 mm. outside of chassis.

Repeat for the opposite side.



15

Secure the inside of the chassis mount using one M10 bolt (M10x30x1.25P, spring and flat washer. Do not tighten.

FITTING PROCEDURE

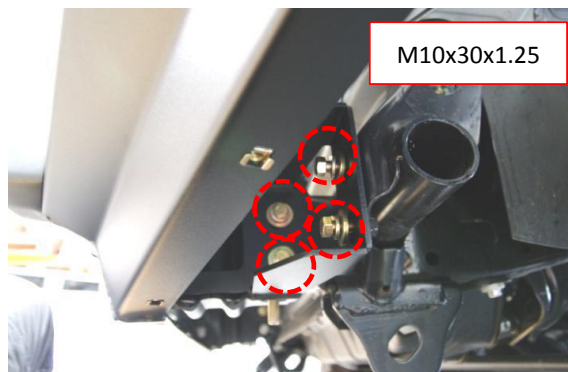


M12x170x1.75

16

Locate the M12 bolt (M12x170x1.75) with spring and flat washer through the chassis from above. Do not attach nut at this stage.

Repeat for the opposite side.

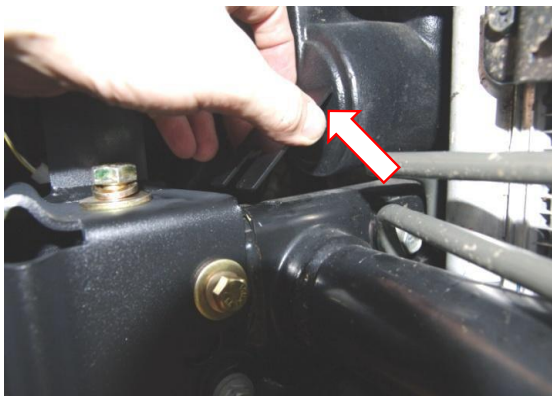


M10x30x1.25

17

Using four M10 bolts (M10x30x1.25), spring and flat washers secure the bar to the chassis and chassis outrigger.

Repeat for the opposite side.



18

If necessary use the supplied chassis spacers to ensure the bar is level and even gaps are achieved for both sides.

Repeat for the opposite side.

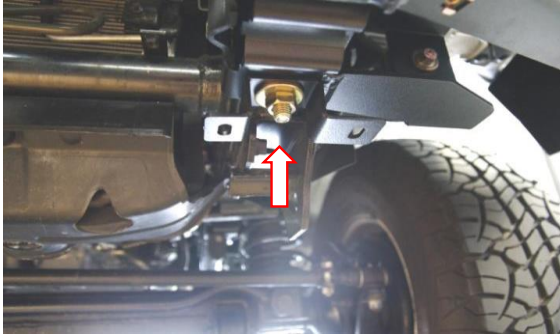


19

Once the bar is level tighten all the M10 bolts to the correct torque.

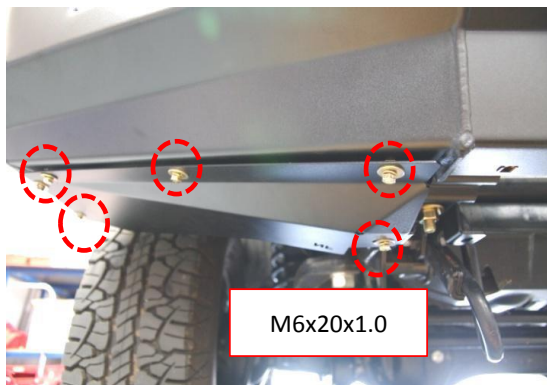
Connect cable Fog light and PIAK combination lamp.

FITTING PROCEDURE



- 20** Attach the protection plate bracket to the bottom of the chassis mount. Fix in place with a M12 flat washer .

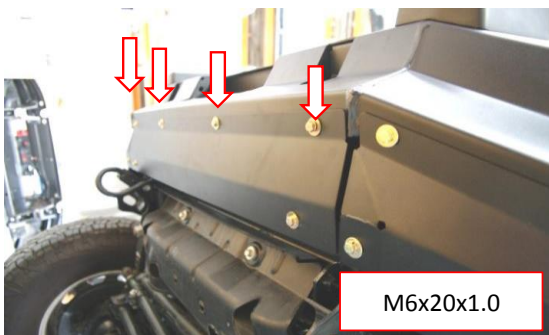
Repeat for the opposite side.



- 21** Attach the outer protection plate to the bar using five M6 bolts (M6x20x1.0), spring and flat washers.

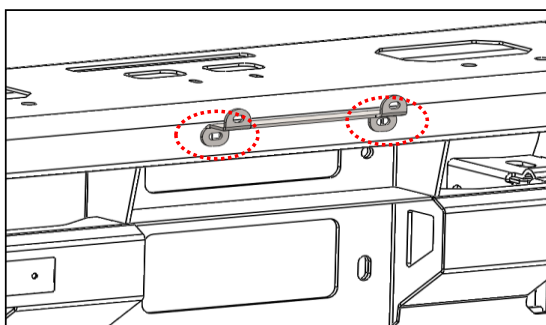
Secure the protection plate to the protection plate bracket using a M8 bolt (M8x30x1.25), spring and panel washer and two Cage Nut M8.

Repeat for the opposite side.



- 22** Fit the center protection plate to the bar with four M6 bolts (M6x20x1.0), spring and flat washers.

Secure the center protection plate to the protection plate bracket with two M8 bolts (M8x30x1.25), spring and panel washers and two Cage Nut M8.



- 23** Fit the number plate to the bar with two M6 bolts (M6x20x1.0), flat and spring washers.

FITTING PROCEDURE

