



£1445

PREMIUM 3-LOOP & 7

FITTING INSTRUCTIONS



**ISUZU D-MAX
2012-2016**

PK105SID12P

Fitting Time : approx. 3 hours

BULL BAR SAFETY NOTICE:

INSTALLATION SHOULD ONLY BE DONE BY APPROPRIATELY QUALIFIED OR EXPERIENCED PERSONS IN ACCORDANCE WITH THESE INSTRUCTIONS.

IT IS THE RESPONSIBILITY OF THE INSTALLER TO ENSURE THAT THE PRODUCT IS CORRECTLY FITTED.

WARNING:

Do not attach Vehicle Frontal Protection System (**VFPS**) to the vehicle using anchorages not intended for this purpose. (e.g. engine mounting bolts)

Do not use this product for any vehicle make or model, other than those specified by the VFPS manufacturer.

Do not remove the plaque or label from the VFPS.

Do not modify the structure of the VFPS in any way.

The VFPS has been produced to provide continued functionality of parking sensors and other "driver assist" features as closely as possible to Original Equipment. However, as all possible road conditions and combination of other accessories fitted to the vehicle which may affect functionality characteristics cannot be anticipated, ***the driver remains responsible at all times for properly controlling the vehicle, monitoring all "driver assist" features and intervening where required to ensure the vehicle is safely operated.***

IMPORTANT INFORMATION:

Before installing the VFPS:

Check that all components, as listed in the assembly table, are available.

Thoroughly read all instructions.

This product or its fasteners must not be modified in any way.

These instructions are accurate as at the revision date and do not take into account any changes made by the vehicle manufacturer to vehicle design after the revision date or other accessories that are or have been fitted to the vehicle. Piak cannot be held responsible for such changes and appropriate enquiries should be made before installation.

Before installing, inspecting and/or maintaining the VFPS, the work space should be safe and clear of fuel, debris, electrical or other components.

During installation:

It is the responsibility of the installer to confirm correct operation/clearance of all components.

All holes drilled shall have all burrs and swarf removed then coated with a suitable rust preventative paint.

Ensure that all hardware is fastened to torque list as detailed in these instructions.

MAINTENANCE AND CARE:

To ensure continued safety and correct operation of the product, the VFPS must be routinely inspected and regularly serviced (including bolt torque checked for correct tension) by an appropriately qualified or experienced person.

The high tensile fasteners supplied with this product were used to achieve the specified rating. If replacement of the fasteners is required, fasteners of the same rating and quality must be used.

If this VFPS is fitted with a hinged number plate bracket, extra care must be taken when returning back to public roads following the use of the winch or conducting a deep water crossing.

The driver must ensure that the number plate bracket is returned back to the down position allowing full visibility of the number plate when returning to public roads.

EQUIPMENT:

These safety products should, at a minimum, be used when fitting or working on the product.



Protective Glasses



Hearing Protection

Installation in accordance with these instructions and adherence to warnings will ensure compliance with relevant regulatory and safety standards as at the revision date.

Failure to adhere to these instructions may affect the roadworthiness of the vehicle or cause personal injury, death or damage to property.


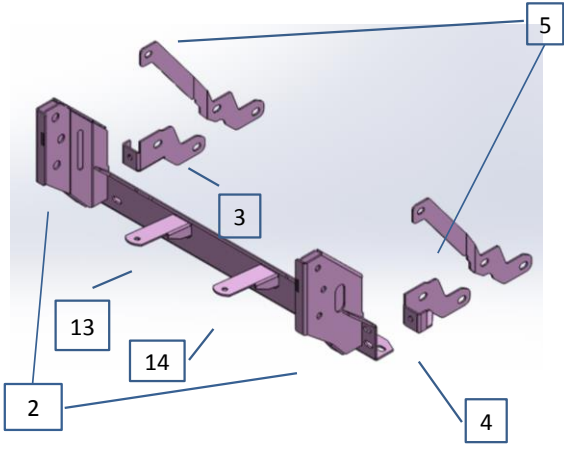
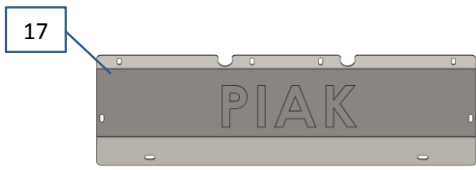
BY USING THIS PRODUCT YOU ACKNOWLEDGE AND AGREE THAT TO THE EXTENT PERMITTED BY LAW PIAK WILL NOT ACCEPT LEGAL OR OTHER LIABILITY FOR ANY LOSS, INJURY OR DAMAGE CAUSED BY INCORRECT OR INAPPROPRIATE INSTALLATION OR USE OF THE PRODUCT.

TOOLS REQUIRED

1. Torque , Socket wrench
2. Screw driver
3. Open spanner

PARTS LIST

⚠ Important : Check contents of fitting kit before commencing fitment and report any discrepancies.

Steel Bull Bar			
Item	Component Name	Q'ty	Remarks
1	Winch Bull Bar	1	
Chassis Mounting Bracket (RH & LH)			
Item	Component Name	Q'ty	Remarks
2	Mounting Bracket	1	
3	Chassis Support Bracket (RH)	1	
4	Chassis Support Bracket (LH)	1	
5	Chassis Support Spacer(RH&LH)	2	
6	Hex Bolt M10x75x1.5 Zn	4	
7	Flat Washer M10 Zn	24	
8	Spring Washer M10 Zn	16	
9	Flange Nut M10x1.25 Zn	4	
10	Hex Bolt M12x30x1.5 Zn	6	
11	Flat Washer M12 Zn	6	
12	Spring Washer M12 Zn	6	
13	Winch Brace (RH)	1	
14	Winch Brace (LH)	1	
15	Hex Bolt M10x30x1.25 Zn	12	
16	Hex Nut M10x1.5 Zn	4	
Protection Plate (Center)			
Item	Component Name	Q'ty	Remarks
17	Protection Plate (Center)	1	
18	Hex Bolt M6x20x1.0 EDP	8	
19	Flat Washer M6 EDP	8	
20	Spring Washer M6 EDP	8	
21	Cage Nut M6x1.0x3T Zn	6	

Protection Plate (RH & LH)			
Item	Component Name	Q'ty	Remarks
22	Protection Plate (RH & LH)	2	
23	Hex Bolt M6x25x1.0 EDP	12	
24	Flat Washer M6 EDP	12	
25	Spring Washer M6 EDP	12	
26	Cage Nut M6x1.0x3T Zn	12	
Winch Control Plate			
Item	Component Name	Q'ty	Remarks
27	Winch Control Plate	1	
28	Hex Bolt M6x20x1.0 Zn	2	
29	Spring Washer M6 Zn	2	
30	Flat Washer M6 Zn	2	
31	Flange Nut M6x1.0 Zn	2	
License Plate Bracket			
Item	Component Name	Q'ty	Remarks
32	License Plate Bracket	1	
33	Hex Bolt M6x20x1.0 Zn	4	
34	Spring Washer M6 Zn	4	
35	Flat Washer M6 Zn	6	
36	Cage Nut M6x1.0x3T Zn	2	
37	Flange Nut M6x1.0 Zn	2	
Accessories			
Item	Component Name	Q'ty	Remarks
38	Pinch Mould (#1/ 3mm.) 790 mm.	2	

TORQUE SETTING OF FASTENER

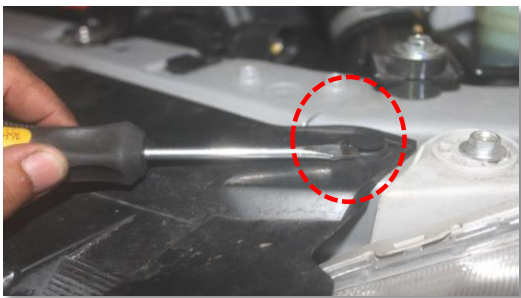
Mounting bolts must be tightened to torque's specified following ;

Bolt Diameter (mm.)	Class 8.8		Class 10.9	
	Torque (Nm.)	Torque (ft-lb.)	Torque (Nm.)	Torque (ft-lb.)
M6	10.5	7.7	15	11.1
M8	25.5	18.8	36.5	26.9
M10	50.5	37.2	72.2	53.3
M12	88	64.9	126	92.9
M14	140	103	200	148

FITTING PROCEDURE



- 1 Locate the vehicle in a suitable area.



- 2 Remove the clips retaining the top of the grille. Retain for re-fitment.



- 3 Remove the screw in the center of the grille. Retain for re-fitment.



- 4 Unclip the lower grille and carefully remove. Place the grille where it will not be damaged for re-fitment later.



- 5 Remove and retain the clips and screws retaining the top of the bumper.

FITTING PROCEDURE



6 If fog lights are fitted disconnect the wiring loom.

7 Carefully remove the bumper.



8 Using aLED test lamp or multi meter, locate the indicator and park wires. Solder the bull bar indicator wiring looms to the vehicles indicator and park lights.

- Bull bar indicator wiring.
- Indicator Yellow
- Park Green
- Earth White



9 Remove and retain the front stone tray and front intrusion beam.



10 Remove and discard the inner guard retaining brackets.



11 Trim the inner guard as shown in the picture.

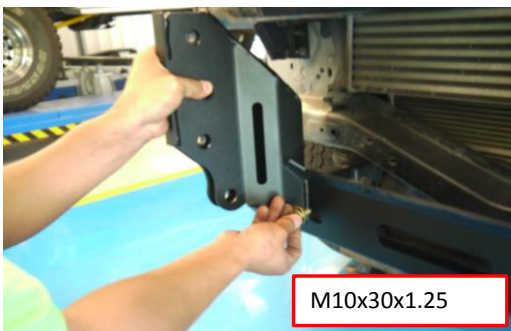
FITTING PROCEDURE



- 12** Re-fit the grille by using the screws and clips removed earlier.

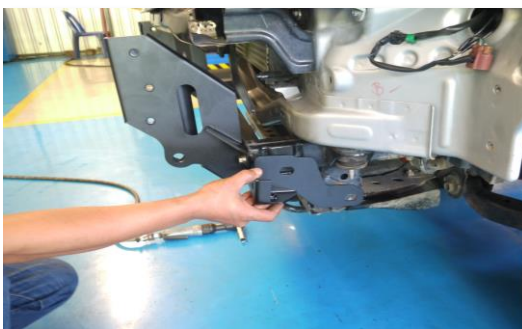


- 13** Connect the chassis mount onto the chassis of vehicle.



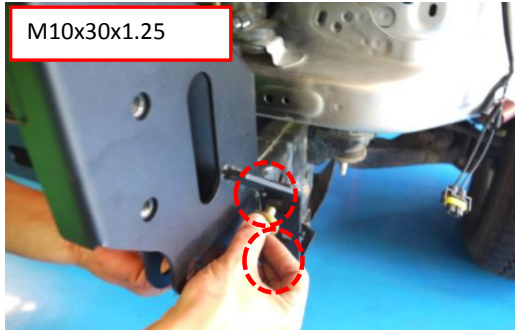
- 14** Secure through the inner holes using M10 bolt (M10x30x1.25), spring washer and flat washer.

Repeat for the opposite side.



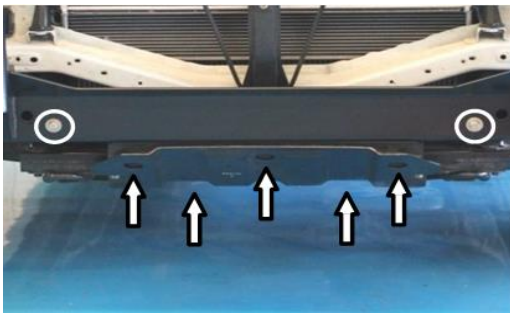
- 15** Attach the chassis support bracket onto the chassis of vehicle.

FITTING PROCEDURE

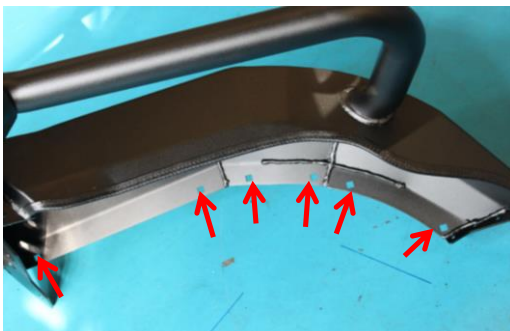


- 16** Secure the chassis mount to the chassis support bracket using two M10 bolts (M10x30x1.25), spring washers and flat washers.

Repeat for the opposite side.



- 17** Re-fit the front stone tray using the original bolts.



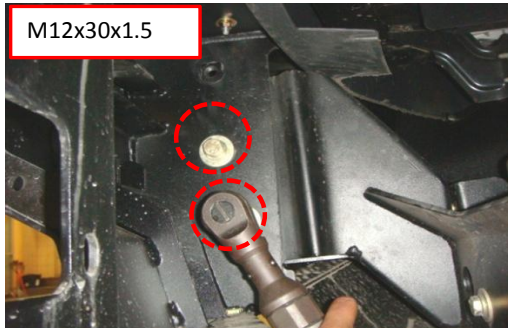
- 18** Fit the supplied pinch mould to the inner of wing and secure six M6 cage nuts at the position as shown.

Repeat for the opposite side.



- 19** Lift the bull bar onto the chassis mounts of vehicle.

FITTING PROCEDURE

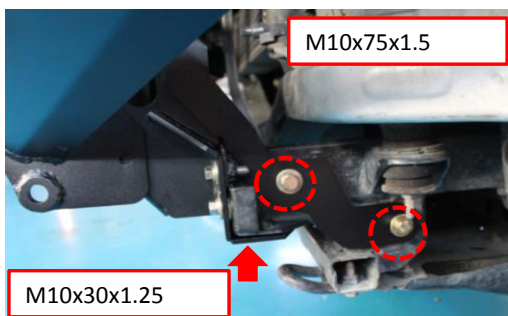


- 20 Secure by using two M12 bolts (M12x30x1.5), spring washers and flat washers.

Repeat for the opposite side.



- 21 Attach the chassis support spacer onto the chassis support bracket .



- 22 Secure with two M10 bolts (M10x75x1.5), spring washers, flat washers and flange nuts as shown and secure M10 bolt (M10x30x1.25), spring washer and flat washer through mounting bracket and chassis support



- 23 Secure to the bull bar by using M12 bolt (M12x30x1.5), spring washer and flat washer.

Repeat for the opposite side on item 21, 22 and 23.

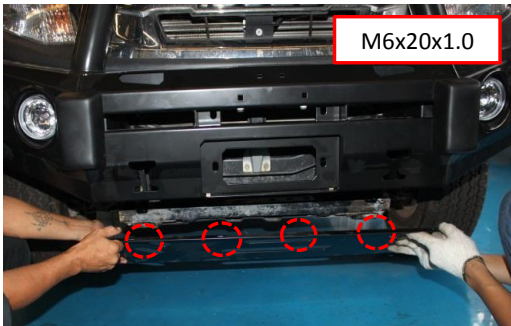
FITTING PROCEDURE



M10x30x1.25

- 24** Secure winch brace onto the bull bar and mounting bracket by using two M10 bolts (M10x30x1.25), spring washers, flat washers and flange nuts.

Repeat for the opposite side.



M6x20x1.0

- 25** Connect the protection plate center onto the bull bar and secure by using four M6 bolts (M6x20x1.0), spring washers, flat washers and cage nuts as shown.



M6x20x1.0

- 26** Secure by using two M6 bolts (M6x20x1.0), spring washers, flat washers and cage nuts at the rear of protection plate.



M6x20x1.0

- 27** Connect LH protection plate onto the bull bar and secure by using six M6 bolts, spring washers and flat washers.

Repeat for the opposite side.

FITTING PROCEDURE



- 28 Connect LH protection plate onto the protection plate center and secure by using M6 bolt (M6x20x1.0), spring washer and flat washer.

Repeat for the opposite side.

