



# Instructions Performance Off-Set Strut Tops

*Page 1 of 3*

**N.B:** This instruction sheet should be used in conjunction with the workshop manual and proper safety procedures followed.

**WHITELINE Off-Set Tops are designed to offer an extra 1.0 degree of negative camber and 1.0 degree positive caster.**

**It is recommended that original camber and caster readings be recorded prior to install.**

**Application:** - Hyundai I30/I30N  
- Hyundai Elantra

**Contents:** - 2x Billet off-set Strut Tops  
- with spherical bearing  
- 2x lower collets  
- 2x upper collets (nut)

- Raise vehicle evenly and safely support.  
*Never rely on a Jack only*
- Proceed to remove front wheels.
- Un-bolt swaybar link
- Un-plug Strut wiring and ABS wiring.
- Loosen and remove lower hub/clevis bolt.

**Note:** you may have to loosen the hub nut and lower inner bushing bolt.

- Lubricate the strut leg and place a small chisel in hub behind strut to slightly spread hub.
- Remove plastic plenum cover and un-bolt the 2 strut top nuts.



**N.B:** It is recommended that a licenced workshop or tradesperson carry out the above procedure and that workshop manual and relevant safety procedures are followed in addition to the above.



# Instructions Performance Off-Set Strut Tops

*Page 2 of 3*

**N.B:** This instruction sheet should be used in conjunction with the workshop manual and proper safety procedures followed.

- Place strut in a spring compressor and dismantle/remove OE strut top.

**CAUTION** - only qualified persons should compress and dismantle strut with appropriate tools



- Remove and re-use OE bump-stop and upper spring seat/bearing - these will be re-used with new strut top

**IMPORTANT** - the bump-stop must be in good condition.

**If the Bump-Stop is cut or trimmed it will have to be replaced**

**N.B:** It is recommended that a licenced workshop or tradesperson carry out the above procedure and that workshop manual and relevant safety procedures are followed in addition to the above.

# Instructions Performance Off-Set Strut Tops

Page 3 of 3

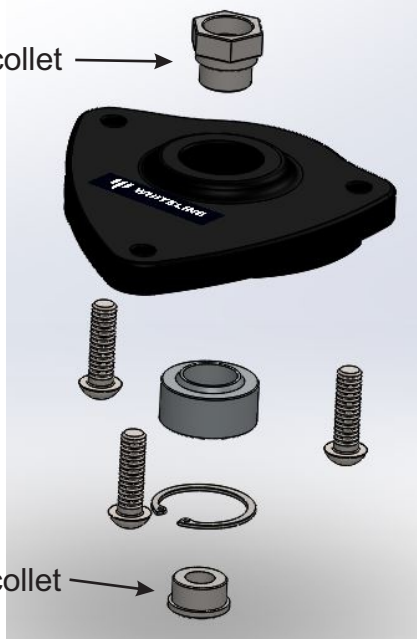
Note - this product is suited to MOTORSPORT  
- slight increase in NVH may be experienced.

- Place new Off-set Top on spring/  
shock shaft.

**Note - upper and lower  
collets as per image below**

- Tighten main upper nut to 70nm.
- Re-fit Strut to vehicle - note image  
below is LH side.
- A wheel alignment is required  
immediately after install.

Upper collet →



Lower collet →



LH side shown - max camber caster

N.B: It is recommended that a licenced workshop or tradesperson carry out the above procedure and that workshop manual and relevant safety procedures are followed in addition to the above.