



# Instructions

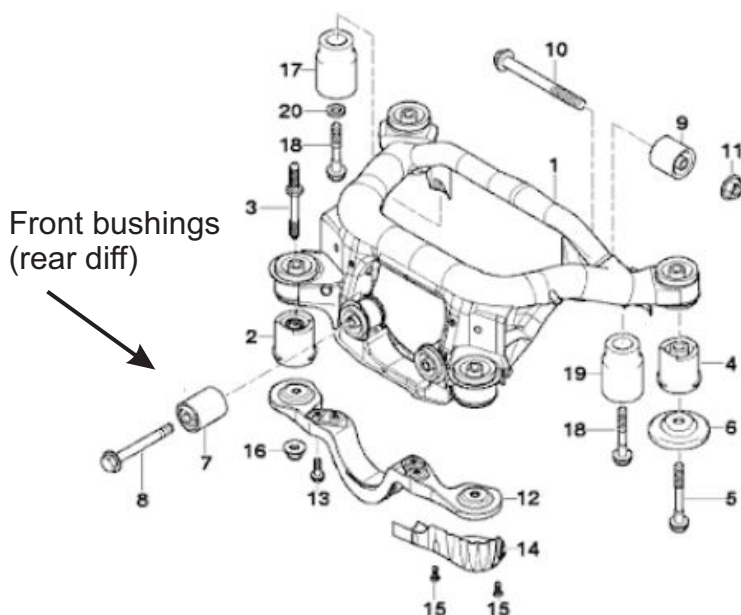
## Rear Differential Bushings

This instruction sheet should be used in conjunction with the workshop manual and proper safety procedures followed.

**Application** - BMW 3 Series E46  
- BMWZ4 E85/E86/E89

(Refer current catalogue for complete listing)

**Contents** - 1x bushing 92049  
- 2x bushing 92050  
- 2x bushing 92051  
- steel tube 25.4x12.2x52 x2  
- steel tube 28.6x14.4x60 x1  
- washer 45x12x2.5 x4  
- washer 62x14.5x3 x1



Front bushings  
(rear diff)

Rear bushing can be removed in car using a mechanical puller - refer page 2

- Lift vehicle evenly and safely support.

*Never rely on a Jack only*

*Note - with an appropriate mechanical puller, bushings can be removed in-car. Alternatively, proceed to remove subframe from vehicle.*

*Careful not to compromise any brake lines when lowering sub-frame.*

**Refer Page 2**



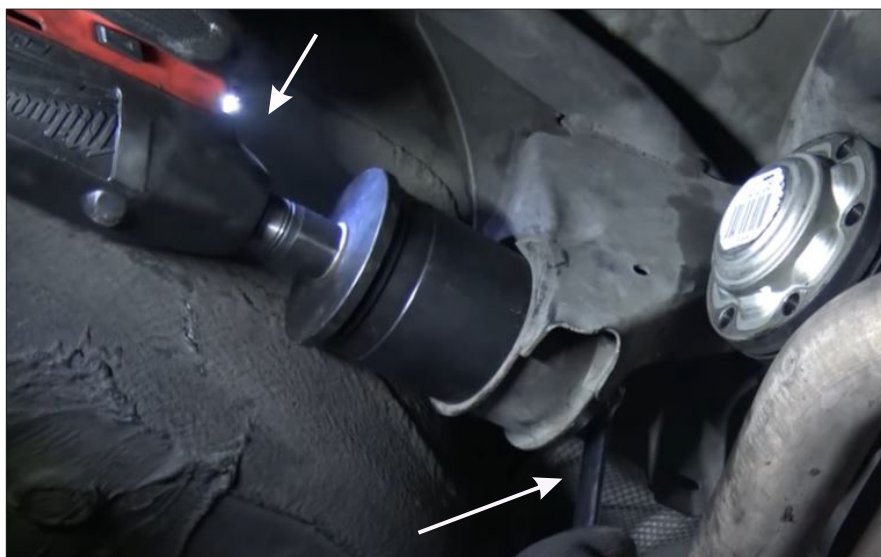
N.B: It is recommended that a licenced workshop or tradesperson carry out the above procedure and that workshop manual and relevant safety procedures are followed in addition to the above.



## Instructions Rear Differential Bushings

This instruction sheet should be used in conjunction with the workshop manual and proper safety procedures followed.

Rattle Gun



- Using a threaded/mechanical puller, 'pull' factory bushing out of sub-frame - remove steel outer shell.

**Use quality nuts/bolt/washers - or have spares incase stripping occurs**

Alternatively, a hole can be drilled into the rubber, then cut outer steel shell with Air-hack-saw. **Careful to not damage sub-frame.**

Spanner

- Once old bushing is removed, check sub-frame is clean with no burrs.

Refer Page 3 for new bushing arrangement



N.B: It is recommended that a licenced workshop or tradesperson carry out the above procedure and that workshop manual and relevant safety procedures are followed in addition to the above.



## Instructions Rear Differential Bushings

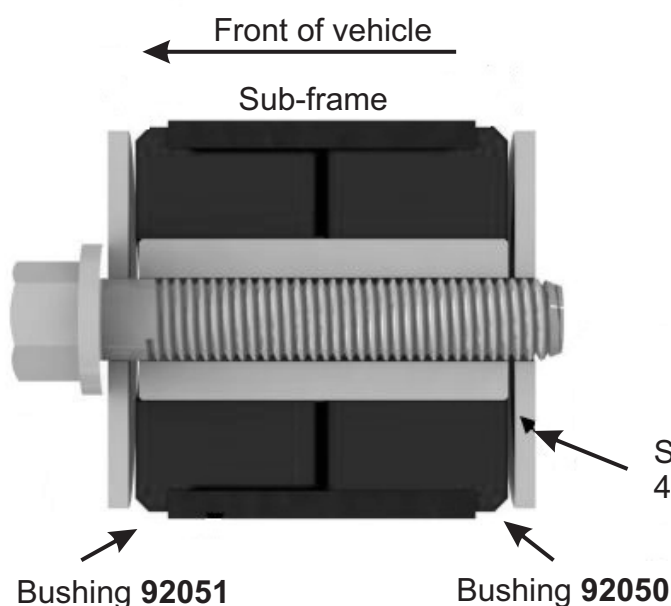
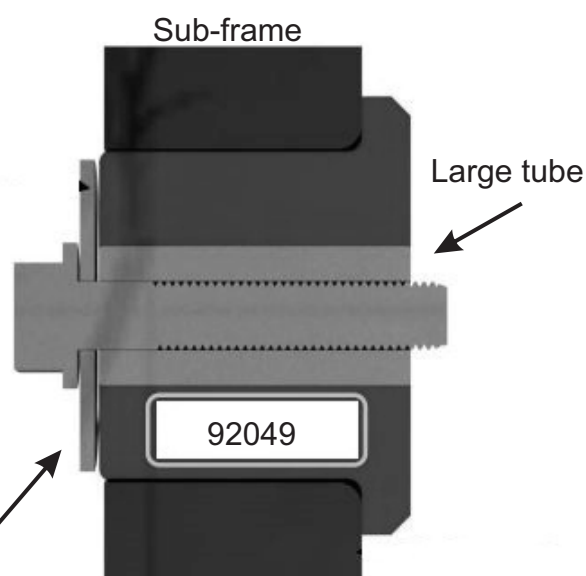
This instruction sheet should be used in conjunction with the workshop manual and proper safety procedures followed.

- Push in new supplied bushings. Use supplied grease - grease bushing internal diameter.

For rear mount, use bushing **92049** with large tube and washer

←  
LH side of vehicle

Supplied washer  
62x14.5x3mm



- For front mount bushings **92050** and **92051** with small tubes and washers

Re-assemble vehicle.

Carry out a wheel alignment on completion. Re-check all bolts after 200kms

N.B: It is recommended that a licenced workshop or tradesperson carry out the above procedure and that workshop manual and relevant safety procedures are followed in addition to the above.